

Pink Lining



Spring / Summer 2016



Welcome to our Spring Summer 2016 collection!

Summer and its happy riot of colour has been the inspiration for this seasons collection in conjunction with everyday musings. Everyday family life is the inspiration behind Pink Lining in everything we do. We are adorning our bags with hearts, rainbow zebras and busy bees this season. Our collection includes new shapes and styles we hope you love them as much as we do.

Charlotte x

Co-founder and
Creative Director



"Everyday family life is the fundamental
inspiration behind Pink Lining"



SHARE THE ADVENTURE



#PinkLining

1.



2.



3.



4.



5.



6.



1. Twice As Nice (16SS313) 2. Wonder Bag (16SS337) 3. Yummy Mummy (16SS308)
4. Blooming Gorgeous (16SS311) 5. Henrietta Tote (16SS320) 6. Notting Hill Tote (16SS317)

Not So Plane Jane
True Love
(16SS315)



True Love

The True Love design arrived in my consciousness one early morning when Henrietta had woken me up at some ridiculous hour (4.30am) and we were pottering round the kitchen together!! Proving inspiration can be found at any moment!

Busy Bees



Henrietta Tote Busy Bee
(16SS319)

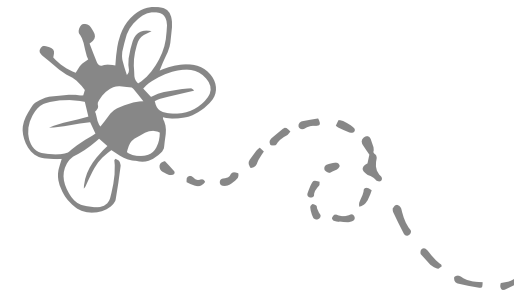
Busy Bees - Nature provides an unending source of inspiration for me and a beautiful cottage garden spied when visiting the Cotswolds formed the basis of the 'busy bee' print



1. Not So Plane Jane (16SS314)



2.



3.



4.



5.



6.

2. Twice As Nice (16SS312) 3. Yummy Mummy (16SS306) 4. Blooming Gorgeous (16SS310)
5. Henrietta Tote (16SS319) 6. Notting Hill Tote (16SS316)



Zebra Crossing

Zebra Crossing - Our quirky rainbow festooned zebra design stemmed from a question one of the children posed about the origin of the name "are they so named because a zebra crossed the first one and wouldn't it be more cheerful if they were multi colour instead?!"

1.



2.



3.



4.



1. Wallet (16SS331) 2. Mum On The Run (16SS326)
3. Wonder Bag (16SS338) 4. Henrietta Tote (16SS321)



Notting Hill Tote
Zebra Crossing
(16SS318)



Mum On The Run
Busy Bees
(16SS324)

On The Go

1.



2.



3.



4.



5.



1. Out & About Mini Messenger True Love (16SS323) 2. Out & About Mini Messenger Busy Bee (16SS322) 3. Mum On The Run True Love (16SS325) 4. Mum On The Run Busy Bee (16SS324) 5. Mum On The Run Zebra Crossing (16SS326)

7.



Holdall
Zebra Crossing
(16SS336)

Holdall

Our Holdalls do exactly what they say. These bags make great hospital bags.

8.



7. Holdall Zebra Crossing (16SS336) 8. Holdall True Love (16SS335)



1. Stroller Organiser True Love (16SS347) 2. Stroller Organiser Busy Bee (16SS346)
 3. Washbag Busy Bee (16SS332) 4. Washbag True Love (16SS333) 5. Bottle Holder Busy Bee (16SS327) 6. Bottle Holder True Love (16SS328) 7. Wallet Busy Bee (16SS329)
 8. Wallet True Love (16SS330)

Accessories



Wallet
 Zebra Crossing
 (16SS331)

NEW



Henrietta Tote
True Love (16SS320)

Henrietta Tote

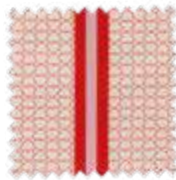
"Inspired and named after my youngest daughter"



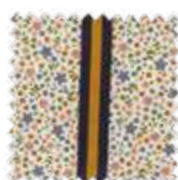
1.

1. Integrated stroller straps,
2. Front external zip pocket to store mobile, pen, keys and essentials,
3. Hidden, insulated, side pockets for bottles,
4. External back pocket to store changing mat.

2.



3.



Also available in this seasons new prints

1. Henrietta Tote Zebra Crossing (16SS321)
2. Henrietta Tote True Love (16SS320)
3. Henrietta Tote Busy Bee (16SS319)

NEW



The Wonder Bag

7.



6.

Introducing our latest edition...

1. Top straps adjust to become shoulder straps
2. Shoulder straps detach and tuck into back of bag to convert it into a tote bag
3. Front external pocket to house phone, keys mirror and essentials
4. Back pocket to store changing mat plus many other handy pockets
5. Capacious main compartment with many compartments & detachable bottle holder
6. Stroller straps included

6. Wonder Bag True Love (16SS337)
7. Wonder Bag Zebra Crossing (16SS338)

Q&A with Charlotte

What inspires a new print?

My inspiration is found in daydreams, memories, everyday family life, and often my own children. It could be a quip, or an illustration espied in a bedtime story. Equally, it could be an old photograph, a striking piece of art, or fragments of nature such as billowing blossom and peonies popped in a glass jar.

Two books which have inspired me since childhood are *The Country Diary of an Edwardian Lady*, and a rare copy of *The Elfin Oak* by Elsie Innes. I love to visit the 900-year-old Elfin Oak stump in Kensington Gardens with my children so they can marvel at its fairy sculptures!

Once you have an idea for a new print how does it develop?

I carry a notebook at all times, and start new prints by sketching parts of a pattern. I collate my doodles with any photographs or tear sheets and collect them into a mood board or private Pinterest board. Eventually I end up with a complete set of hand drawn patterns which form the basis of a collection. I colour these by hand and this drawing is then turned into a file that can be sent to the fabric mill that produces a swatch for me to approve.

What is your favourite print and why?

That is very difficult as I change some of my prints seasonally whilst also maintaining the classic "house" fabrics. I'm excited by the new designs and at the moment I love our Tulips and Forget Me Nots print. My husband's favourite flowers are red tulips and, as a child, I loved the story of how forget-me-nots got their name. So I decided to combine the flowers we each love in one print.

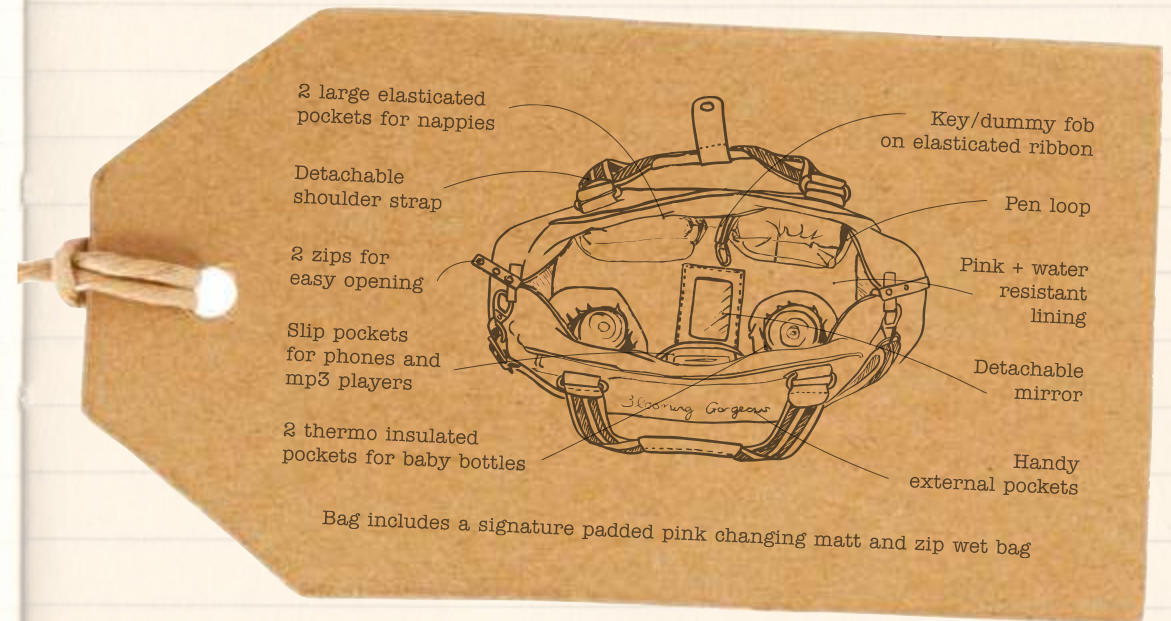
What made you start Pink Lining?

I set out to design and make myself a bag as a result of a challenge by my then boyfriend, now husband, Rufus Pearl. I hand-stitched my creations, until my mother lent me a sewing machine that neither she nor I had any idea how to use. My first press releases featured photos I took with a disposable camera! When I had my first child and failed to find a changing bag that was practical and functional as well as gorgeous, Rufus told me I should design my own! And so I did. Rufus and I now run and own Pink Lining together and our growing family provides an unending wealth of inspiration for my designs and products.



Charlotte gets a helping hand from Henrietta, one.

It's what's inside that counts...



Once Upon A Time...

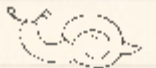


...there was a little girl whose Mummy wove magical bedtime stories set in an imaginary land she called Pink Cloud. Today, Charlotte's own children clamour to be taken on new make believe adventures to that same magical pink cloud by their grandmother, Caroline. As a little girl Charlotte's Mummy told her that she could do anything if she tried hard enough, and if, as is sometimes wont, things don't go exactly according to plan, search for the sparkling silver lining which is sure to be hidden there somewhere. It is the amalgamation of these childhood sentiments and nostalgia that is the inspiration behind the name "Pink Lining"...

"Designed for our family and yours"



WWW.PINKLINING.COM/UK



For little ones with BIG imaginations



Dimensions: 18.5(L) x 23.5(H) x 7(W) cm

The Picture Satchel comes with a clever clear pouch and removable insert which can be personalised with your child's own masterpiece!

Dimensions:
31(L) x 27(H) x 8(W) cm



Dimensions:
23(L) x 20(H) x 8.5(W) cm

1. Mini Rucksack Arnold the Alien (KIDS15SS077) 2. Mini Rucksack Robbie the Robot (KIDS13SS003) 3. Mini Rucksack Raining Cats and Dogs (KIDS15SS076) 4. Mini Rucksack Little Lady (KIDS13SS001) 5. Picture Satchel Arnold the Alien (KIDS15SS086) 6. Picture Satchel Raining Cats and Dogs (KIDS15SS085) 7. Lunchbox Robbie the Robot (KIDS13SS011) 8. Lunchbox Little Lady (KIDS13SS009)

For little ones with BIG imaginations

Padded back panel and adjustable padded shoulder straps for comfort.

Large rear section is ideal for books and any travel necessities plus a mesh slip pocket can be used for snacks. Also has a write on name tag.

Handy side pockets ideal for juice bottles.

External front zip pocket contains pencil holders and handy slip pockets for extra bits and bobs.



Dimensions: 29(L) x 13(W) x 38(H) cm



9. Arnold the Alien Big Chaps Rucksack (KIDS15SS084)
10. Raining Cats and Dogs Big Chaps Rucksack (KIDS15SS083)



**FEEL
HAPPY!**

For little ones with **BIG** imaginations

Pink Lining
CHILD

Mesh slip pocket
to store food,
cutlery etc...



1.

Opens fully for easy access
Completely thermo insulated



2.

Elasticated loop to keep
drink bottle in place

Dimensions: 20(L) x 8.5(W) x 23.5(H) cm



3.

4.

Dimensions:
30(L) x 45(H) x 20(W) cm



5.

6.

Dimensions:
40(L) x 26(H) x 22(W) cm

1. Lunchbox Raining Cats and Dogs (KIDS15SS089) 2. Lunchbox Arnold the Alien (KIDS15SS090) 3. Wheelie Case Arnold the Alien (KIDS15SS094) 4. Wheelie Case Raining Cats and Dogs (KIDS15SS093) 5. Overnight Bag Raining Cats and Dogs (KIDS15SS091) 6. Overnight Bag Arnold the Alien (KIDS15SS092)

And so to bed...

1. One Starry Night Moses Basket (14AW246)
2. Hop Skip Jump To Bed Moses Basket (14AW257)



3. One Starry Night Sleeping Bag 0-6 months (14AW242) / 6-18 months (14AW243)
4. Hop Skip Jump To Bed Sleeping Bag 0-6 months (14AW253) / 6-18 Months (14AW254)



5. One Starry Night Musical Cot Mobile (14AW249)
6. Hop Skip Jump To Bed Musical Cot Mobile (14AW260)



7. One Starry Night Star Strewn Cosy Cot Bed Quilt & Bumper set (14AW247)
8. Hop Skip Jump To Bed Snug As A Bug Cot Bed Quilt & Bumper Set (14AW258)

And so to bed...



Snuggle Up In a Cuddle Robe



1. One Starry Night Sheet Set (14AW244) 2. Hop Skip Jump To Bed Sheet Set (14AW255) 3. One Starry Night Pack of 2 Cuddle Robes (14AW241) 4. Hop Skip Jump To Bed Pack of 2 Cuddle Robes (14AW252)

5.



6.



9.



10.



And so to bed...

7.



8.



5. One Starry Night Baby's First Dragon (14AW248) 6. Hop Skip & Jump To Bed Baby's First Snuggle Bunny (14AW259) 7. One Starry Night Knitted Pram Blanket (14AW250) 8. Hop Skip Jump To Bed Knitted Pram Blanket (14AW261) 9. One Starry Night Nappy Stacker (14AW245) 10. Hop Skip Jump To Bed Nappy Stacker (14AW256)

Product Index

YUMMY MUMMY (38L x 28H x 14W cm)



Wise Owl (14SS106)



Navy Bows (13SS046)



Busy Bee (16SS306)



True Love (16SS308)



The Bees Knees
(16SS307)

BLOOMING GORGEOUS (38L x 25.5H x 19W cm)



Busy Bee (16SS310)



True Love (16SS311)

TWICE AS NICE (42L x 30H x 13W cm)



True Love (16SS313)



Busy Bee (16SS312)

Product Index

NOT SO PLANE JANE (38L x 28H x 14W cm)



Busy Bee (16SS314)



True Love (16SS315)

WONDERBAG (33L x 18W x 37H cm)



Zebra Crossing
(16SS338)



True Love Wonder Bag
(16SS337)

NOTTING HILL TOTE (46L x 28H x 15W cm)



True Love (16SS317)



Zebra Crossing
(16SS318)



Busy Bee (16SS316)

Product Index

HENRIETTA TOTE (38L x 15W x 28H cm)



True Love
(16SS320)



Busy Bee
(16SS319)



Zebra Crossing
(16SS321)

OUT & ABOUT MESSENGER (21L x 25H x 9W cm)



Busy Bee (16SS322)



True Love (16SS323)

HOLDALLS (55L x 30W x 33H cm)



Zebra Crossing
(16SS336)



True Love (16SS335)

Product Index

MUM ON THE RUN (29L x 21H cm)



Zebra Crossing
(16SS326)



Busy Bee (16SS324)



True Love (16SS325)

WALLETS (10L x 20H x 2W cm)



Zebra Crossing
(16SS331)



True Love (16SS330)



Busy Bee (16SS329)

BOTTLE HOLDERS (9L x 21H x 9W cm)



True Love
(16SS328)



Busy Bee
(16SS327)

WASHBAGS (30L x 23H x 9.5W cm)



True Love
(16SS333)



Busy Bee
(16SS332)

STROLLER ORGANISERS (37L x 14H x 9W cm)

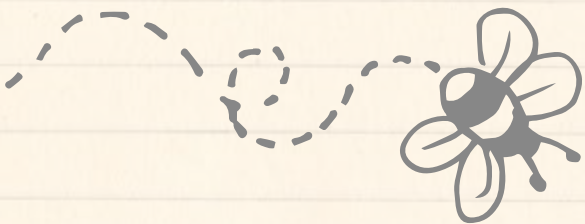


Busy Bee (16SS346)



True Love (16SS347)

Contact Us



Pink Lining is an award winning brand



SHARE THE ADVENTURE



#PinkLining

UK OFFICE

Sales & Distributor Enquiries:

Natasha Leviton

T: 0044 (0)20 7034 0035

E: natasha@pinklining.com

Press Contact: Tania Arthur

T: 0044 (0)20 7034 0035

E: tania@pinklining.com

HEAD OFFICE & SHOWROOM

Ground Floor, Suite GFE

The Phoenix Brewery

13 Bramley Road

London W10 6SP

T: 0044 (0)20 7034 0035

www.pinklining.com/uk/

www.pinklining.com

DESIGNED BY CHARLOTTE PEARL

PHOTOGRAPHY BY ROB MATTHEWS



"Designed for our family and yours"

www.pinklining.com/uk