

TEST REPORT

NO.: A001R121206035001

Date: Jan 04, 2013

Page 1 of 8

Applicant: Miyali BV.

Address: Lode wijk van der pol lente park 48 2151 EV, Nieuw Vennepe, The Netherlands

Report on the submitted sample said to be

Sample name: Green plush toys

Model: /

Item/Lot No. : /

Material: /

Buyer: /

Supplier: Canfine

Manufacturer: Canfine

Country of Origin: China

Country of Destination: Netherlands

Labelled Age Grading: /

Sample received date: Dec 06, 2012

Testing period: From Dec 06, 2012 to Jan 04, 2013

Test Requested

Conclusion

(1). For compliance with the European Standard on Safety of Toys:	
-EN 71-1:2011 – Mechanical and physical properties	Pass
-EN 71-2:2011- Flammability	Pass
-EN 71-3:1994+A1:2000 /AC: 2002- Migration of certain elements	Pass
(2). As specified by client, to determine the Lead(Pb), Cadmium(Cd), Mercury(Hg), Hexavalent Chromium(Cr ⁶⁺) content in the submitted sample in accordance with Directive 94/62/EC.	Pass
(3).As specified by client, to determine the DEHP、DBP、BBP、DINP、DNOP and DIDP content in the submitted sample in accordance with Regulation (EC) No 552/2009.	Pass

*****FOR FURTHER DETAILS, PLEASE REFER TO THE FOLLOWING PAGE(S)*****

Signed for and on behalf of
Shenzhen AOV Testing Technology Co., Ltd

Tested by: Rosary
Luo Jun, Rosary
Project Leader

Reviewed by: Lewis
Liu Lin Wen, Lewis
Laboratory Supervisor

Approved by: _____
Lv Jie Hua, Jeewah
Technical Director

TEST REPORT

NO.: A001R121206035001

Date: Jan 04, 2013

Page 2 of 8

Results:
(1).Part 1 : Mechanical and physical properties

Section	Description	Result
4	GENERAL REQUIREMENTS	
4.1	Material cleanliness	Pass
4.7	Edges	Pass
4.8	Points and metallic wires	Pass
5	TOYS INTENDED FOR CHILDREN UNDER 36 MONTHS Remark: According to Directive 2009/48/EC, a toy intended for use by children under 36 months must be designed and manufactured in such a way that it can be cleaned, except if it contains a mechanism that may be damaged if soak washed. The toy shall fulfil the safety requirements also after having been cleaned. The manufacturer should provide instructions on how the toy has to be cleaned.	Pass
5.1	General requirements Remark: Toys and removable components of toys intended for children under 36 months shall not produce any parts which, whatever their position, fit entirely in the cylinder before and after abuse.	Pass
5.2	Filling materials	Pass
5.4	Cords on toys	Pass
7	Warnings, markings and instructions for use Remark: Toys made available on the market shall bear the CE marking. The CE marking shall be affixed visibly, legibly and indelibly to the toy, to an affixed label or to the <i>packaging</i> . In the case of small toys and toys consisting of small parts, the CE marking may alternatively be affixed to a label or an accompanying leaflet. Where specific legislation does not impose specific dimensions, the CE marking shall be at least 5 mm high. —The manufacturer's name, registered trade name or registered trade mark and the address at which the manufacturer can be contacted shall be indicated on the toy or, where that is not possible, on its <i>packaging</i> or in a document accompanying the toy. This requirement applies also to the name and address etc. of any importer. —Manufacturers shall ensure that their toys bear a type, batch, serial or model number or other element allowing their identification, or where the size or nature of the toy does not allow it, that the required information is provided on the <i>packaging</i> or in a document accompanying the toy. —Manufacturers and importers shall ensure that the toy is accompanied by instructions and safety information in a language or languages easily understood by consumers, as determined by the Member State concerned. —A Member State may, within its territory, stipulate that warnings and safety instructions shall be written in a language or languages easily understood by consumers, as determined by that Member State.	Pass

TEST REPORT

NO.: A001R121206035001

Date: Jan 04, 2013

Page 3 of 8

7.11	Toys intended to be strung across a cradle, cot, or perambulator Remark: Toys intended to be strung across a cradle, cot, or perambulator by means of strings, cords, elastics or straps shall bear the following warning: "Warning! To prevent possible injury by entanglement, remove this toy when the child begins to push up on hands and knees."	Pass
8	Test Methods	
8.3	Torque Test	Pass
8.4	Tension Test	Pass
8.5	Drop Test	Pass
8.7	Impact Test	Pass
8.8	Compression Test	Pass

Part 2: Flammability

Section	Description	Result
4.1	General	Pass
4.5	Soft filled toys (animals and dolls, etc) with a piled or textile surface	Pass

Note:

4.1 The following materials shall not be used in the manufacture of toys:

Celluloid (cellulose nitrate), except when used in varnish, paint or glue, or in balls of the type used for table tennis or similar games, and materials with the same behaviour in fire as celluloid. Specific materials to which the test flame is applied in order to check compliance of the toy with requirements in 4.2 to 4.5 are considered to comply with this requirement if the toy meets its appropriate requirements in 4.2 to 4.5;

Materials with a piled surface which produce surface flash on the approach of a flame. Piled surfaces showing no momentary area of flame over the area of the piled surface remote from the test flame are considered to meet this requirement;

Highly flammable solids.

In addition, toys shall not contain flammable gases, highly flammable liquids, flammable liquids, flammable gels except as provided for below:

Flammable liquids, flammable gels and preparations supplied in sealed containers having a maximum volume of 15 ml per container;

Highly flammable liquids and flammable liquids being entirely retained within a porous material in capillary channels of writing instruments;

Flammable liquids with a viscosity greater than $260 \times 10^{-6} \text{m}^2/\text{s}$ corresponding to a flow time of more than 38 s when determined in accordance with EN ISO 2431 using cup No. 6;

Highly flammable liquids contained in toys covered in EN 71-5.

NOTE: Different legal requirements may exist in non-EU countries.

4.5 The requirements of this clause do not apply to toys with a maximum dimension of 150 mm or less. A toy shall be tested as supplied, including any clothing present with the toy and, if considered to be more onerous, with the clothes removed if removal can be accomplished without damage to the clothes or toy.

When tested in accordance with 5.5, the rate of spread of flame on the surface shall not be more than 30 mm/s or shall self-extinguish.

TEST REPORT

NO.: A001R121206035001

Date: Jan 04, 2013

Page 4 of 8

Part 3: Migration of certain elements

Analysis was performed by inductively coupled plasma atomic emission spectrometer.

Soluble Element	Cadmium (Cd)	Lead (Pb)	Chromium (Cr)	Mercury (Hg)	Antimony (Sb)	Barium (Ba)	Arsenic (As)	Selenium (Se)
Limit	75	90	60	60	60	1000	25	500
Code	Specimen's testing result							
1	<5	<5	<5	<5	<5	<5	<2.5	<5
2	<5	<5	<5	<5	<5	<5	<2.5	<5
3	<5	<5	<5	<5	<5	<5	<2.5	<5
4	<5	<5	<5	<5	<5	<5	<2.5	<5
5	<5	<5	<5	<5	<5	<5	<2.5	<5
6	<5	<5	<5	<5	<5	<5	<2.5	<5
7	<5	<5	<5	<5	<5	<5	<2.5	<5
8	<5	<5	<5	<5	<5	<5	<2.5	<5
9	<5	<5	<5	<5	<5	<5	<2.5	<5

Note:

- unit: mg/kg=ppm, <=Less than.
- Results shown are of the adjusted analytical results.

(2). Lead(Pb), Cadmium(Cd), Mercury(Hg), Hexavalent Chromium(Cr⁶⁺) content

Test Item	Pretreatment Method	Measuring Instrument	MDL
Lead	US EPA 3052:1996	ICP-OES	2 mg/kg
Cadmium	EN1122:2001	ICP-OES	2 mg/kg
Mercury	US EPA 3052:1996	ICP-OES	2 mg/kg
Hexavalent Chromium	US EPA 3060A:1996	UV-VIS	2 mg/kg

Item	Unit	Result	
		10	11
Lead (Pb)	mg/kg	N.D.	N.D.
Cadmium (Cd)	mg/kg	N.D.	N.D.
Mercury (Hg)	mg/kg	N.D.	N.D.
Chromium (Cr ⁶⁺)	mg/kg	N.D.	N.D.
Total [Pb+ Cd+ Hg+ (Cr ⁶⁺)]	mg/kg	N.D.	N.D.
Acceptable Limit	mg/kg	100	100

Note:

- Specimens, which requested to determine Cadmium, Mercury and Lead Content, have been dissolved completely.
- mg/kg =ppm
- N.D.=not detected(<MDL)
- MDL=Method Detection Limit

TEST REPORT

NO.: A001R121206035001

Date: Jan 04, 2013

Page 5 of 8

(3): phthalate content

Test Method: US EPA 3540C:1996, US EPA 8270D:2007, Measuring Instrument: GC-MS

Item	CAS No.	Unit	MDL	Limit	Result				
					12	13	14	15	16
Bis (2-ethylhexyl) phthalate (DEHP)	117-81-7	mg/kg	30	/	N.D.	432	N.D.	N.D.	N.D.
Dibutyl phthalate (DBP)	84-74-2	mg/kg	30	/	N.D.	56	57	N.D.	N.D.
Benzyl butyl phthalate (BBP)	85-68-7	mg/kg	30	/	N.D.	N.D.	N.D.	N.D.	N.D.
Total (DEHP+ DBP+ BBP)	/	mg/kg	/	1000	N.D.	488	57	N.D.	N.D.
Di-iso-nonyl phthalate (DINP)	28553-12-0 68515-48-0	mg/kg	50	/	N.D.	N.D.	N.D.	N.D.	N.D.
Di-n-octyl phthalate (DNOP)	117-84-0	mg/kg	30	/	N.D.	N.D.	N.D.	N.D.	N.D.
Diisodecyl phthalate (DIDP)	26761-40-0 68515-49-1	mg/kg	50	/	N.D.	N.D.	N.D.	N.D.	N.D.
Total (DINP+DNOP+DIDP)	/	mg/kg	/	1000	N.D.	N.D.	N.D.	N.D.	N.D.

Note:

- mg/kg = ppm
- N.D.=not detected(<MDL)
- MDL=Method Detection Limit

Specimen Description:

Code	Specimen Name	Description
1	Green plush toys	Eyes
2		Green outside cloth
3		Grass green outside cloth
4		Green magic tape front
5		Green magic tape reverse side
6		Mirror
7		Green grains
8		Label
9		Green lanyard
10		Instruction book
11		Outer packing
12		Eyes
13		Green magic tape front
14		Green magic tape reverse side
15		Mirror
16		Corduroy

TEST REPORT

NO.: A001R121206035001

Date: Jan 04, 2013

Page 6 of 8

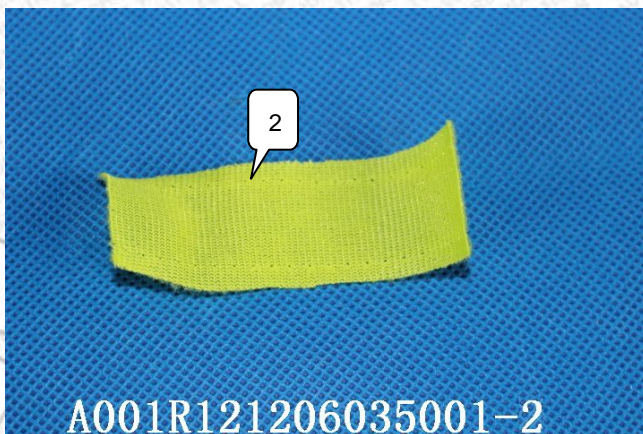
Note:

- Photo is included.

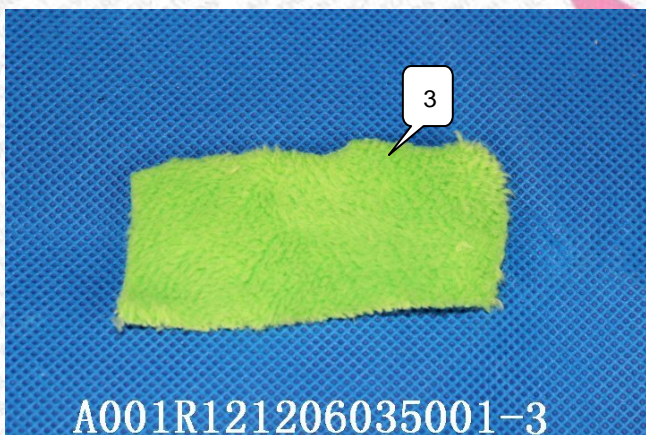
Photograph of sample



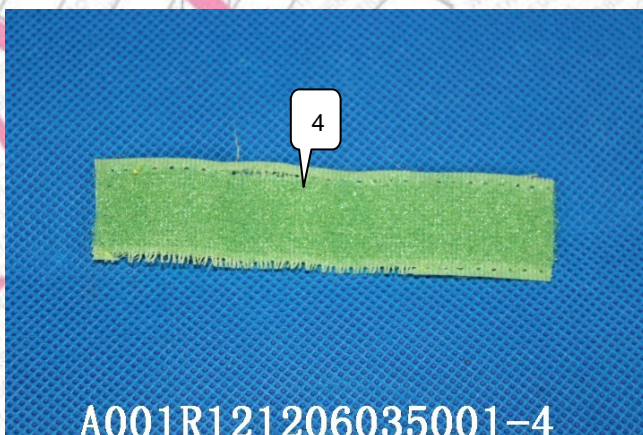
Eyes



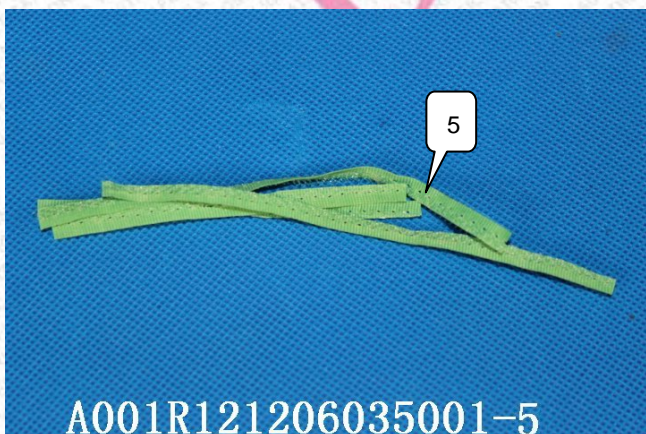
Green outside cloth



Grass green outside cloth



Green magic tape front



Green magic tape reverse side



Mirror

TEST REPORT

NO.: A001R121206035001

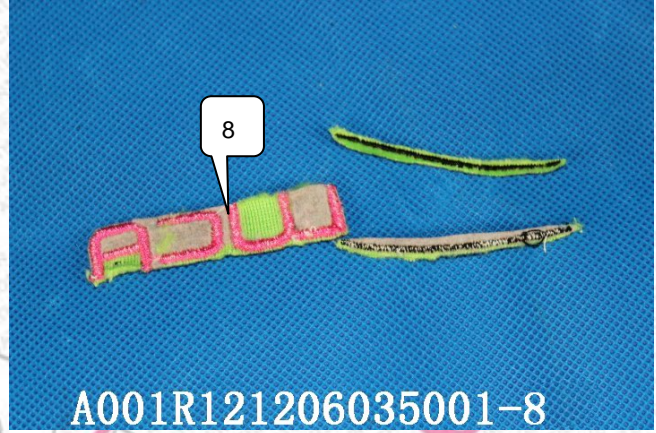
Date: Jan 04, 2013

Page 7 of 8

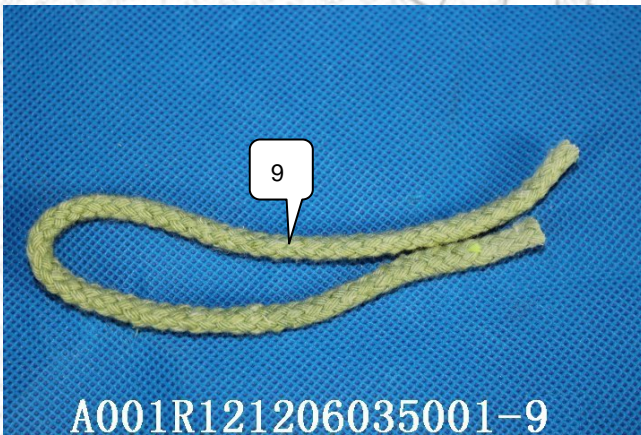
Photograph of sample



Green grains



Label



Green lanyard



Instruction book



Outer packing



Eyes

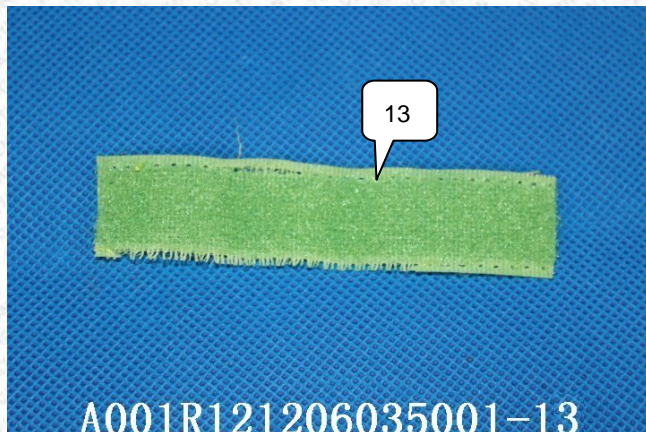
TEST REPORT

NO.: A001R121206035001

Date: Jan 04, 2013

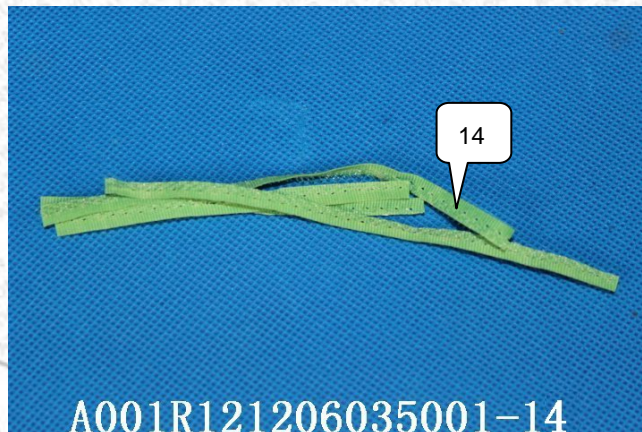
Page 8 of 8

Photograph of sample



A001R121206035001-13

Green magic tape front



A001R121206035001-14

Green magic tape reverse side



A001R121206035001-15

Mirror



A001R121206035001-16

Corduroy



A001R121206035001

Green plush toys

End of Report