
Deutsch DE 3 - 15

Dansk DK 3 - 15

Español ES 3 - 15

Suomi FI 3 - 15

Français FR 3 - 15

English GB 3 - 15

Italiano IT 3 - 15

Nederlands NL 3 - 15

Norsk NO 3 - 15

Português PT 3 - 15

Preface

Dear Customer,

Please read this instruction manual carefully and study the appendix with the safety information and warranty before using your buggy. It is important that any other person using this buggy reads and understands both documents. Demonstrate how the buggy works, before lending it to anyone else. If you do not follow up the instructions, maintenance suggestions and warnings, you may be jeopardising your child's safety. Keep both documents in a safe place for future reference. Safety instructions have the ⚠ symbol, tips the 💡 symbol.

The buggy can be used for children aged 0 to approximately 4 and has a load-bearing capacity up to a maximum weight of 18 kg.

It is important to check the complete buggy and all its accessories before use. If a part is missing or damaged, please report this to your Koelstra point of sale within seven days of purchase.

We hope you enjoy using your Koelstra buggy!
www.koelstra.com

This product has been manufactured in accordance with European standard EN 1888. This instruction manual has been compiled with care and meets the requirements and regulations in accordance with the NEN 5509 standard.

⚠ Warning!

- Use the product only for its intended purpose. Using it for any other purpose is improper and dangerous. Koelstra BV cannot be held liable for any damage caused or injuries sustained due to incorrect or improper use of your product.
- This Koelstra product is not a toy, never allow children to play with the buggy.

⚠ Attention!

- A child's safety is your responsibility.
- The safety regulations and warranty conditions can be found in a separate, attached appendix. To claim on the warranty you must be able to show the buggy together with the serial number*, proof of purchase and a fully completed warranty form. The sticker with the serial number can be found on the bottom of the buggy.

💡 Tip

- Save your proof of purchase in the designated place at the back of the book with the safety regulations and warranty conditions.

** Only so-called 'hard goods' have a serial number. 'Soft goods' do not have a serial number.*

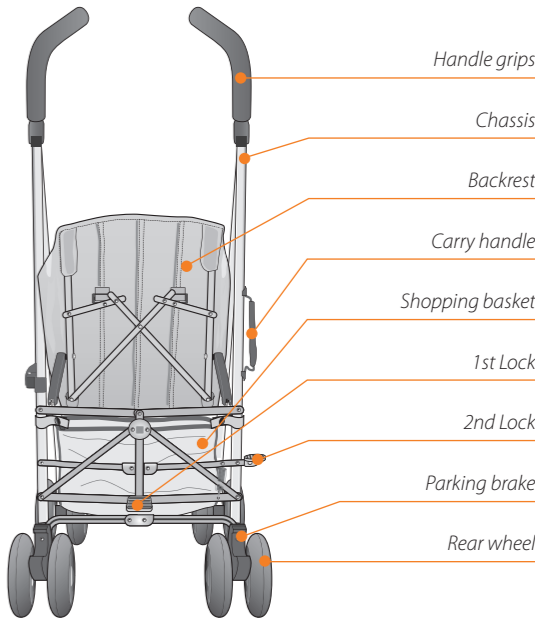
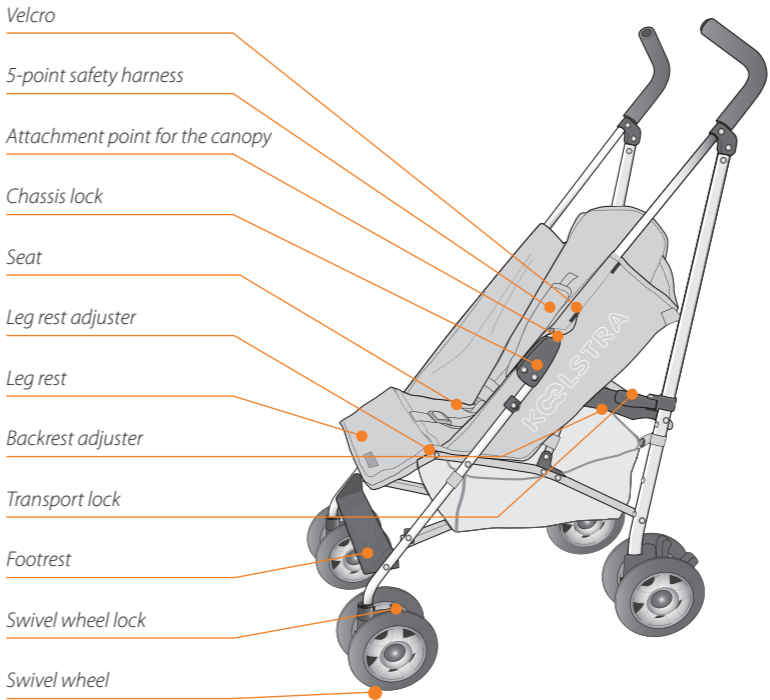
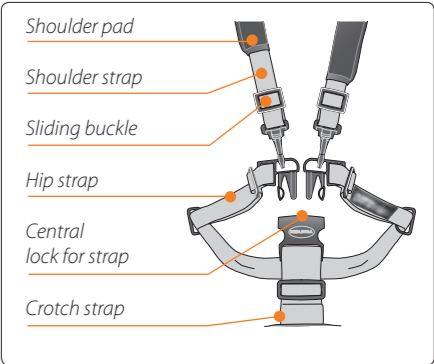
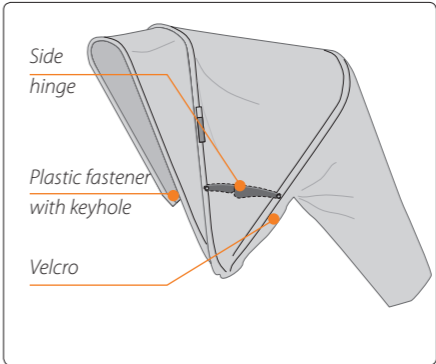
Table of Contents

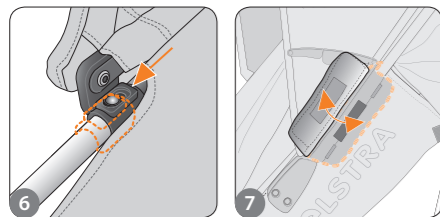
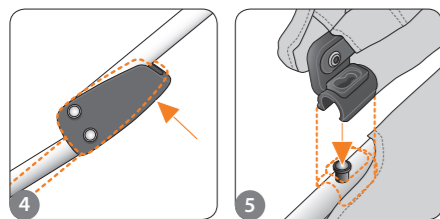
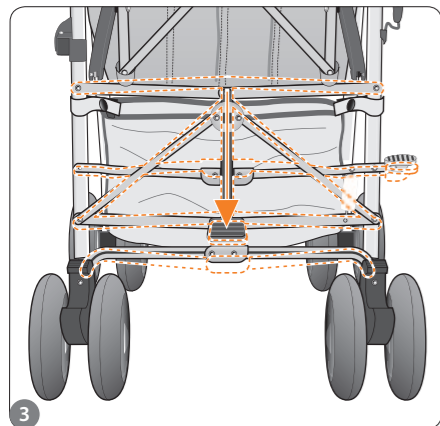
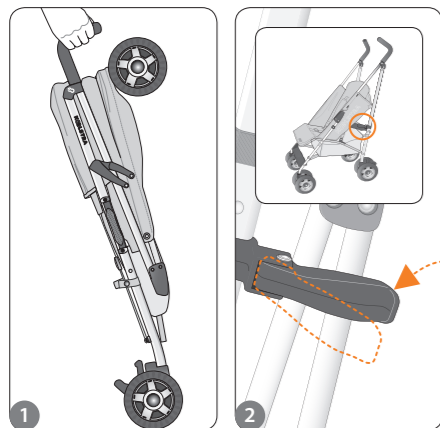
What's in the box?	6
Product Description	7
1 Unpacking and assembling the product	8
1.1 Before using it for the first time	8
1.2 Unfolding the buggy	8
1.3 Fitting the canopy	8
2 Using the buggy	8
2.1 Adjusting the backrest	9
2.2 Adjusting the leg rests	9
2.3 Using the 5-point safety harness	9
2.4 Locking/unlocking the swivel wheels	10
2.5 Using the parking brake	10
2.6 Shopping basket	11
3 Transporting and storing the buggy	11
3.1 Folding up the buggy	11
3.2 Transporting the buggy	11
3.3 Storing the buggy	11
4 Maintenance	12
4.1 General	12
4.2 Cleaning the buggy	12
4.3 Faults	12
5 Accessories	13
5.1 Seat liner (Optional)	13
5.2 Raincover for buggy (Optional)	13
5.3 Footmuff (Optional)	13
5.4 Care bag (Optional)	13
5.5 Travel bag (Optional)	13
5.6 Parasol (Optional)	13
6 Technical specifications	14
7 Disposing of product and packaging	15

What's in the box?



Product Description





1 Unpacking and assembling the product

1.1 Before using it for the first time

- ⚠ Danger, risk of serious injury or death!**
 - Keep plastic packaging materials away from children as they can present a choking hazard for children.
 - Beware of small parts. Your child may swallow a small part and choke.
 - Do not place any loose objects in the buggy.

⚠ Warning!

- Before use, check your product for any damage, loose or missing parts, sharp edges and/or protruding parts.
- Never exceed the maximum allowed weight in the buggy (see p. 14 'technical specifications'. 14 Technical specifications).

⚠ Caution!

- To prevent damage to the buggy, do not remove logos or stickers. Some logos and stickers are required by law.

💡 Tip

- For environmental reasons we recommend that you discard the packaging at your local civic amenity site.

- Remove the buggy and the canopy from the box.
- Remove all packaging materials and discard immediately.
- Use the product description to check if the buggy is complete (see p. 7).

1.2 Unfolding the buggy

⚠ Warning!

- Beware of any moving parts or hinges when unfolding, folding or adjusting the buggy. Beware of getting your fingers or hands, or your child's fingers or hands jammed.

The buggy is folded.

- Pick up the buggy by the handle grips (the wheels must be resting on the ground, the 1st

lock is on the same side as where you are standing, see fig. 1).

- Unlock the transport lock with your left hand (see fig. 2).
 - Use your foot to press down the 1st lock (see fig. 3).
- The chassis is now in a straight line with the frame lock (see fig. 4).*

1.3 Fitting the canopy

The buggy is unfolded.

- Click the plastic canopy fasteners into position on the chassis so that the wide side of the keyhole falls over the fastening point of the canopy on the chassis (see fig. 5).
- Slide both plastic fasteners downwards on the chassis, so that the little peg of the canopy's fastening point clicks into the narrow side of the keyhole (see fig. 6).
- Press down both canopy hinges (see fig. 6).
- Fasten the Velcro on the canopy to the Velcro on the buggy (see fig. 7).

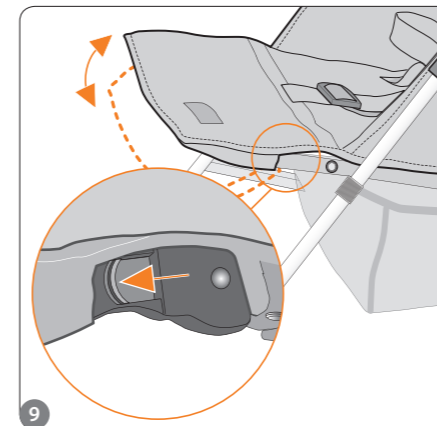
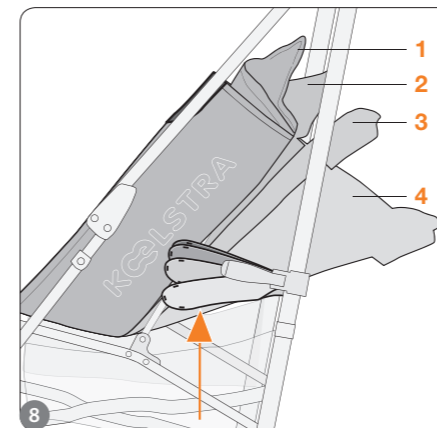
2 Using the buggy

⚠ Danger, risk of serious injury or death!

- Never place the buggy near heaters, open fire or other sources of heat as this could pose a fire hazard.
- Keep the buggy away from loose leads, wires and cables in case of falling objects, strangulation or choking hazards.

⚠ Warning!

- Never carry more than one child in the buggy, the maximum load is 18 kg.
- Only use accessories that are supplied by Koelstra BV. Other accessories have not been specifically designed for Koelstra products and may overload your buggy and cause it to be incorrectly balanced.
- Do not use a second child's seat.
- Do not allow your child to stand on the bars between the wheels. This can be dangerous for your child and will damage the buggy.
- Never let another child stand on the buggy's legrest.



- Remove your child from the buggy when using escalators, stairs, lifts and steep slopes.
- Never allow your child to stand up in the buggy, always use the 5-point safety harness.
- Do not lift up the buggy when your child is still in it.
- Never leave your child in the buggy unsupervised.
- Do not hang any shopping bags or other items from the handle bars, this may affect the buggy's stability and durability, and may cause the buggy to tip over.
- Take extra care when near train stations or roads. Gusts of wind from passing trains or cars can cause the buggy to move.
- Avoid dangerous situations by not jogging, skating etc. with the buggy.
- Aluminium, metal and synthetic parts can become very hot in the sun. Make sure your child cannot burn itself on any hot parts.

⚠ Caution!

- Take care to always use four wheels simultaneously, even when manoeuvring onto or off the pavement. Although the chassis is strong, it will wear much quicker if you only use two wheels.
- Do not use the buggy for transporting baggage, overloading the buggy may cause damage.
- Do not place products on the canopy.
- Always check that all the wheels have been fitted correctly, as this is important for the brake to function properly.

⚠ Attention!

- Always keep the canopy on the buggy unfolded to protect your child's sensitive skin from the sun. If you do not want to use the canopy, then attach a parasol.
- To avoid danger of fingers becoming jammed or the buggy suddenly folding, check that all the locks are securely engaged each time before use.
- Check that the zips and press-studs are properly closed and/or attached.

2.1 Adjusting the backrest (see fig. 8)

⚠ Attention!

- Never adjust the backrest when your child is sitting or lying in the buggy.

The buggy is unfolded.

- Push both backrest adjusters into an upward position.
- Push back the backrest.
- Pull the backrest upwards and secure it into the desired position.

The backrest has 4 positions.

2.2 Adjusting the leg rest (see fig. 9)

The buggy is unfolded, the leg rest is in a horizontal position.

- Hold down the leg rest adjusters on both sides and push the leg rest into a downward position.
- Pull the leg rest upwards again to secure it in a horizontal position.

The leg rest has 2 positions: horizontal and vertical.

2.3 Using the 5-point safety harness

⚠ Caution!

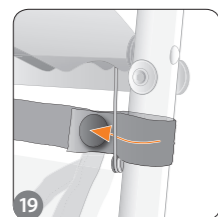
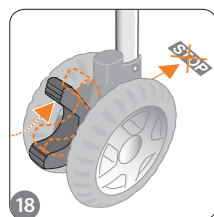
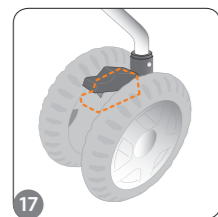
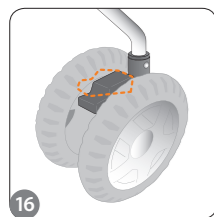
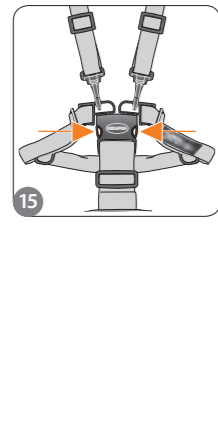
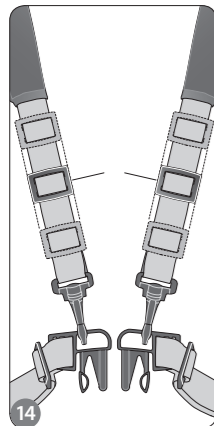
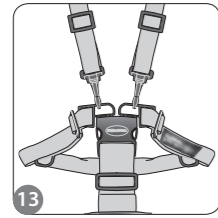
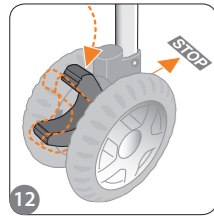
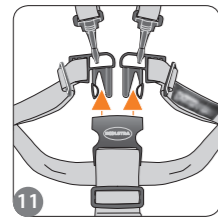
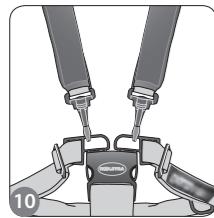
- Make sure to use only the 5-point safety harness supplied with this buggy.
- Always secure your child in the 5-point safety harness (even if your child is able to sit up unaided).

⚠ Attention!

- Always adjust the height of the 5-point safety harness according to your child's height. The larger the child, the higher the shoulder strap should be positioned in the seat.
- Always adjust the length of the 5-point safety harness according to your child's size. Do this using the sliding buckles on the 5-point safety harness.
- Make sure the straps of the 5-point safety harness are not twisted.

💡 Tip

- The 5-point safety harness has D-rings attached to the hip straps. If necessary, an additional set of straps or a harness can be attached to these.



- Slide the shoulder pads on the shoulder straps along the sliding buckles to make your child more comfortable (see fig. 10).

Locking the 5-point safety harness:

All buckles on the 5-point safety harness are unclipped (see fig. 11).

- Engage the buggy's parking brake (see fig. 12).
- Place your child in the buggy.
Attention! Make sure that the strap of the hip belt always runs behind your child's back and is attached at the front.
- Place one of your child's legs on each side of the crotch strap.
- Place the shoulder straps over each of your child's shoulders.
- Push the two plastic clips (these are located where the shoulder and hip belts meet) into the central harness lock that can be found on the crotch strap (see fig. 13).
- Check that the 5-point safety harness is secure by giving it a gentle tug.
- Tighten the shoulder straps, hip strap and crotch strap using the sliding buckles attached to the belts of the harness (see fig. 14).

Unlocking the 5-point safety harness:

- Press and hold both plastic clips in the central harness lock to unlock the 5-point safety harness (see fig. 15).

2.4 Locking/unlocking the swivel wheels



Tip

- The locked position is very handy for pushing the buggy on sandy or rough ground.
- With the swivel wheels unlocked, the buggy has a very small turning circle, which is very handy when shopping.

Locking the swivel wheels:

- Push the swivel wheel locks on both wheels upwards to lock (see fig. 16).
The swivel wheels are then locked as soon as you start pushing the buggy.

Unlocking the swivel wheels:

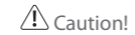
- Use your foot to push down the swivel wheel lock on the left and right front wheel (see fig. 17).
The swivel wheels can now be moved freely.

2.5 Using the parking brake



Warning!

- Never leave your child in the buggy unsupervised, not even if the parking brake is engaged.
- Always keep hold of the buggy when your child is inside.
- Always engage the parking brake on the buggy whenever you bring the buggy to a standstill (for example when putting your child in or taking your child out of the buggy).



Caution!

- A slippery or steep surface may adversely affect the parking brake.



Attention!

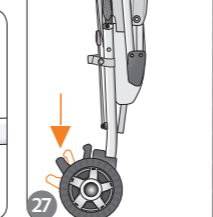
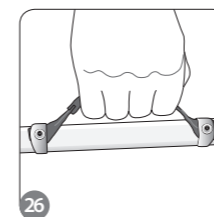
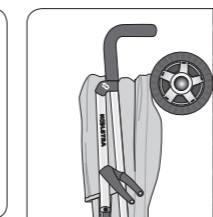
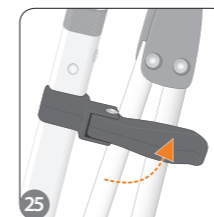
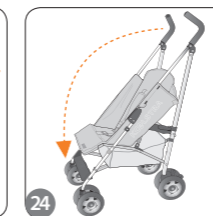
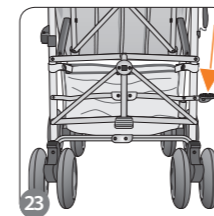
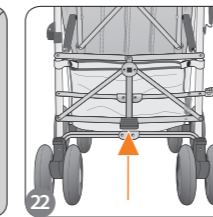
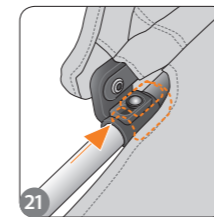
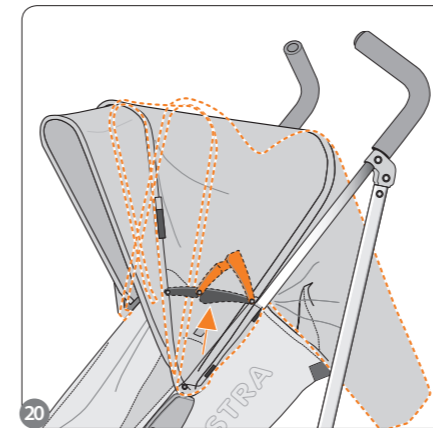
- Always engage the parking brake when you bring the buggy to a standstill.
- Always check that you have engaged the parking brake before letting go of the buggy.
- Never use the parking brake when the buggy is in motion.

Locking the parking brake:

- Use your foot to push down the parking brake on the left and right rear wheel (see fig. 12).
- Give the buggy a gentle push to check that the parking brake has been activated.

Unlocking the parking brake:

- Push the parking brake upwards on both wheels to unlock (see fig. 18).



2.6 Shopping basket

Removing the shopping basket:

Upon delivery the shopping basket is attached to the chassis.

- Gently pull open all the press-studs and remove the shopping basket.

Attaching the shopping basket:

- Attach the shopping bag to the chassis using the four press-studs.

Attention! Run the fastening straps along the back of the chassis, around the metal hooks (see fig. 19).

3 Transporting and storing the buggy

3.1 Folding up the buggy



Attention!

- Always store folded products away from children.
- Empty the shopping basket before folding the buggy.



Tip

- When the buggy is folded, cover the wheels with a cloth to prevent dirt and/or smudges from soiling the fabric.

Folding the canopy:

- Push the canopy hinges upwards and press the canopy towards the handle grips (see fig. 20).

Removing the canopy:

The canopy is folded.

- Gently pull the Velcro of the canopy away from the Velcro on the buggy (see fig. 7).
- Slide both plastic fasteners upwards on the chassis so that the peg where the canopy is attached is positioned in the wide part of the keyhole (see fig. 21).
- Gently pull away from both plastic fasteners on the chassis.

Folding the buggy:

The canopy is folded.

- Use your foot to push the 1st lock a little upwards (see fig. 22).
- Then use your foot again to push down the 2nd lock (see fig. 23).
- Move the handle grips towards the front wheels to fold up the buggy (see fig. 24).
The transport lock will automatically click onto the chassis (see fig. 25).

3.2 Transporting the buggy



Caution!

- Transport the buggy with care. The chassis and the fabric can be damaged if you bump or scrape it.

The buggy is folded.

- Check that the transport lock is secure.
- Lift the folded buggy by the carry handle on the chassis (see fig. 26).

3.3 Storing the buggy



Caution!

- To avoid any damage, do not place any objects on or against the folded buggy.



Tip

- Once the wheels have been locked with the parking brake, the buggy can be stored in a vertical position. This will save space.

- Engage the buggy's parking brake.
- Fold the buggy as described in the steps in chapter 3.1.
- Position the buggy vertically (see fig. 27).

4 Maintenance

4.1 General

⚠ Attention!

- Only use Teflon spray or silicon spray for lubricating the moving parts. Never use oil, grease or other lubricants as these attract dirt and dust.



- If your buggy has been involved in an accident, please pay a visit to your Koelstra dealer to have the buggy checked for any technical faults.

- Lubricate the moving parts regularly. This will prolong the life of your buggy.
- Regularly check that all the parts of your buggy are functioning properly.
- The Koelstra upholstery is dirt and water-resistant.

4.2 Cleaning the buggy

⚠ Caution!

- Do not bleach or dry clean the fabric.
- Clean the buggy immediately after it has been used in a sandy and/or salty environment (for example at the seaside). Sand can damage moving parts and/or the locking devices. Salt will cause metal parts to rust.
- If wet, dry the unfolded fabric in a dark room to prevent it from discolouring.



- Stains can be removed using a mild detergent or soap stick.

General:

- Use a damp cloth to clean stains on the fabric.
- Regularly clean the chassis, the moving parts and the wheels.
- First remove the coarse sand and dirt with a soft brush.
- Dry the buggy with a soft cloth after cleaning.

4.3 Faults

⚠ Warning!

- To avoid dangerous situations and further damage, never use a faulty buggy.
- Immediately replace faulty parts. Always have this done by an authorised Koelstra dealer.
- Do not use the buggy if the lining material is showing through the fabric.

⚠ Caution!

- Never place the buggy in the sun for prolonged periods of time. The fabric can discolour and plastic parts can be damaged. *Koelstra fabrics are of the highest UV protection category.*

⚠ Attention!

- Do not make any modifications to the product yourself. This is unsafe and invalidates your warranty.
- Report any faults to your Koelstra dealer.
- If any parts start to show signs of wear or become faulty, always have them replaced by an authorised Koelstra dealer.

5 Accessories

⚠ Attention!

- Only use accessories and/or parts that have been approved by Koelstra BV.
- Visit our website www.koelstra.com for a complete overview of the various accessories and other Koelstra products.

5.1 Seat liner (Optional)

⚠ Attention!

- Check regularly whether your child is not too hot or cold.

Specifications:

- Double-sided seat liner for extra comfort and seat temperature control.
- Fleece side for extra insulation during those cold days.
- Cool side for cooling during those hot days.
- Slits for optimal use in combination with the 5-point safety harness.

5.2 Raincover for buggy (Optional)

⚠ Warning!

- Use the raincover only when it rains. Never leave your child under the raincover if it is not raining as this can cause heat to develop and obstruct the oxygen supply.

⚠ Attention!

- Always use a raincover when it is raining. The fabric is water-repellent, but water can penetrate through the stitching and cause damage.

Specifications:

- Transparent raincover made to measure for the buggy.
- Shipped with a handy storage bag.

5.3 Footmuff (Optional)

⚠ Warning!

- Never let the fabric of the footmuff rest on the child's face as this can obstruct the oxygen supply.
- Take care not to harm your child when using the zip.

⚠ Attention!

- Check regularly whether your child is not too hot or cold.

Specifications:

- Insulating footmuff with soft inside fleece lining and detachable top.
- Slits for optimal use in combination with the 5-point safety harness.
- Triangular reflector for optimal visibility.
- Shipped with a handy storage bag.

5.4 Care bag (Optional)

Specifications:

- Care bag with adjustable carry strap.
- Plenty of storage with seven zippable compartments, including a thermal compartment.
- Supplied with changing mat.
- The carry strap also has a name badge and a handy hook.

5.5 Travel bag for buggy (Optional)

Specifications:

- Travel bag with adjustable carry strap and name badge for transporting the buggy.
- Shipped with a handy storage bag.

5.6 Parasol (Optional)

Specifications:

- Reflective parasol with adjustable attaching clamp.
- Flexible, so can be bent in any direction.
- Shipped with a handy storage bag.

6 Technical specifications

This product has been manufactured in accordance with European standard EN1888.

Intended age	0 to approximately 4
Max. load	18 kg
Max. number of children	1
Weight	6.1 kg
Dimensions in cm (l x w x h): - Folded - Unfolded*	106 x 26 x 22 77 x 47 x 109
Recommended cleaning agents for fabric	Mild detergent, soap stick
Recommended lubricants	Silicon spray, Teflon spray

**Dimensions are including the canopy and shopping basket*

7 Disposing of product and packaging

For environmental reasons we recommend that you discard both the packaging and the product (at the end of its product life) at your local civic amenity site.

This instruction manual has been compiled with care and meets the requirements and regulations in accordance with the NEN 5509 standard. However, Koelstra BV cannot be held responsible for any inaccuracies or for the completeness of the information and does not accept any responsibility for damages and/or injury of any kind, as a result of actions and/or decisions that have been based on the information in this manual.

The product purchased may differ from the product as described in the manual.

The most recent manuals can be requested from Koelstra BV. See also www.koelstra.com.

© Copyright 2010 Koelstra BV

