

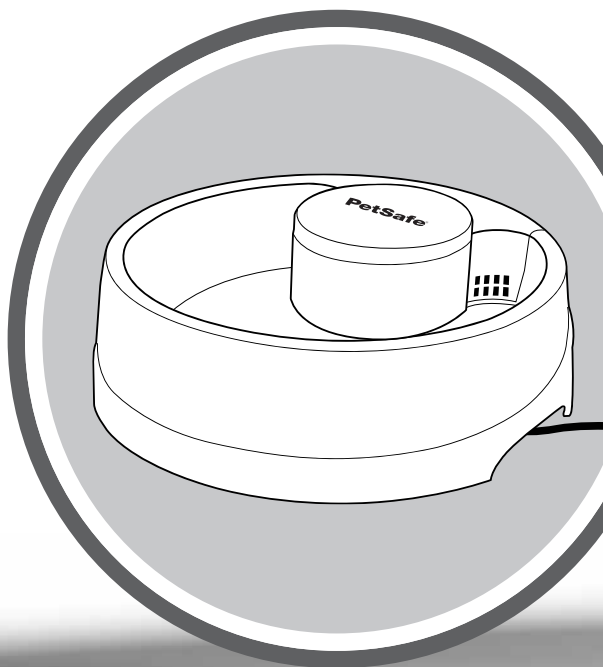
Drinkwell®

Užívateľská príručka
Užívateľská príručka

CURRENT-S-BR-EU-19
CURRENT-M-BR-EU-19
CURRENT-L-BR-EU-19
CURRENT-S-BR-UK-17
CURRENT-M-BR-UK-17
CURRENT-L-BR-UK-17

Prúdová fontána pre zvieratá

Prúdová fontána pre zvieratá



Prosíme prečítajte si celú príručku predtým než začnete
Prosíme prečítajte si celú príručku predtým než začnete

protect. teach. love.™

Radio Systems Corporation, Radio Systems PetSafe Europe Ltd., Radio Systems Australia Pty Ltd. A každá iná pobočka alebo značka Radio Systems Corporation bude ďalej nazývaná kolektívne ako "My.

DÔLEŽITÉ BEZPEČNOSTNÉ INFORMÁCIE

Explanation of Attention Words and Symbols used in this guide



This is the safety alert symbol. It is used to alert you to potential personal injury hazards. Obey all safety messages that follow this symbol to avoid possible injury or death.

⚠ WARNING

WARNING indicates a hazardous situation which, if not avoided, could result in death or serious injury.

CAUTION

CAUTION, used without the safety alert symbol, indicates a hazardous situation which, if not avoided, could result in harm to your pet.

NOTICE

NOTICE is used to address practices not related to personal injury.

⚠ WARNING

When using electrical appliances, basic safety precautions should always be followed to reduce the risk of fire, electric shock, and/or injury to persons, including the following:

- To reduce the risk of injury, close supervision is necessary when an appliance is used by or near children.
- To protect against electric shock, do not place electrical power cord or power adapter in water or other liquids.
- Do not use outdoors. Do not run dry. For indoor household use only.
- To unplug, grasp the power adapter, not the electrical power cord.
- Do not operate any appliance if it has a damaged electrical power cord or power adapter, or if it is malfunctioning or has been damaged. Call Customer Care Centre immediately for further instructions.
- To reduce the risk of electric shock, do not place or store an appliance where it can fall or be pulled into a bath tub or sink.
- Always unplug any appliance when not in use, before putting on or taking off parts, and before cleaning.
- Do not use an appliance for anything other than its intended use.
- If the power adapter of this device gets wet, turn off the electricity to that mains power outlet. Do not attempt to unplug.
- Examine this appliance after installation. Do not plug into mains power outlet if there is water on the electrical power cord or power adapter.
- Always unplug any appliance when not in use, before putting on or taking off parts, and before cleaning. Never pull on the electrical power cord to remove the power adapter from the mains power outlet.

CAUTION

- Do not allow pets to chew on or swallow any parts. If you are concerned about the electrical power cord, purchase a cord conduit (a hard plastic protector) at any hardware store.
- The plastic pet fountain parts are BPA-FREE. However, some animals have been known to be sensitive to plastic food and water containers. If your animal shows signs of an allergic reaction to the plastic, please discontinue use until you have consulted with your veterinarian.

NOTICE

- The pet fountain is intended to run continuously (always plugged into a mains power outlet), as long as the water level is maintained and the pet fountain is cleaned regularly. Be sure to check the pet fountain regularly to help prevent damage to the pump, as the water may get consumed or evaporate causing the pump to run dry.
- Do not attempt repairs on the pump.
- To avoid the possibility of the power adapter or mains power outlet getting wet, the outlet should always be above the level of the pet fountain.
- If an extension cord is necessary, an extension cord with a proper rating should be used.
- The electrical use of this appliance is 2.0 watts.
- The use of attachments not recommended or sold by the manufacturer may cause an unsafe condition. Do not modify the appliance.
- Do not install or store appliance where it will be exposed to weather or temperatures below 4.5° C.
- Read and observe all important notices listed on the appliance and in the packaging.
- Pet Fountain must be cleaned regularly continue working normally.
- Never wash the filter with soapy water as the soap residue will seep into the filter and cannot be removed. Only rinse the filter with water.
- Use only PetSafe® Brand authorised replacement filters. If unauthorised filters are used it may void the warranty.

SAVE THESE INSTRUCTIONS

EN

FR

NL

ES

IT

DE

Thank you for choosing the PetSafe® Brand. You and your pet deserve a companionship that includes memorable moments and a shared understanding together. Our products and training tools enhance the relationship between pets and their owners. **If you have any questions about our products or training your pet, please visit our website at www.petsafe.net or contact our Customer Care Centre. For a listing of Customer Care Centre telephone numbers, visit our website at www.petsafe.net.**

To get the most protection out of your warranty, please register your product within 30 days at www.petsafe.net. By registering and keeping your receipt, you will enjoy the product's full warranty and should you ever need to call the Customer Care Centre, we will be able to help you faster. Most importantly, your valuable information will never be given or sold to anyone. Complete warranty information is available online at www.petsafe.net.

Operating Instructions

1. Remove the lid by placing a finger underneath the tab on the back of the lid and lifting up (**Fig. 1**).
2. Flip the bowl over and remove the pump cord from the cord notch and channel. It should now be loose for easy removal (**Fig. 2**).

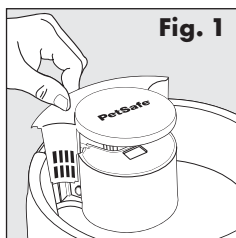


Fig. 1

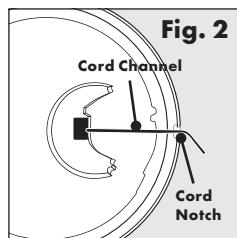


Fig. 2

3. Remove the pump and the pump plate by lifting up on them (**Fig. 3**).
4. Next, pull the pump cord up through the opening until the pump is completely removed from the bowl piece. Remove the pump plate by simply pulling it away from the pump. (**Fig. 4**).

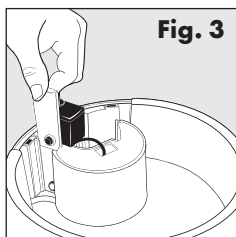


Fig. 3

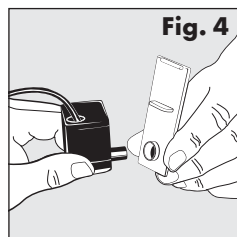


Fig. 4

5. With your thumb and forefinger, gently squeeze on either side of the faceplate of the pump and pry it off. It may be necessary to insert a fingernail or other slim object into the seam of the faceplate (**Fig. 5**).
6. Next, remove the intake plate by placing your finger underneath the small lip, pull it away from the pump (**Fig. 6**).

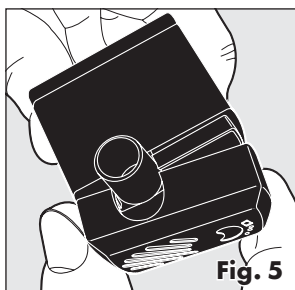


Fig. 5

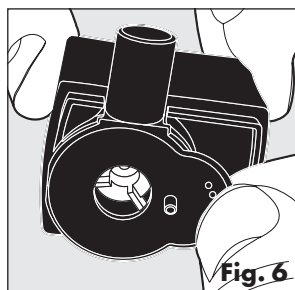
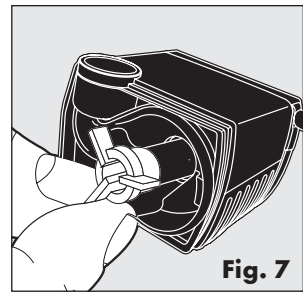


Fig. 6

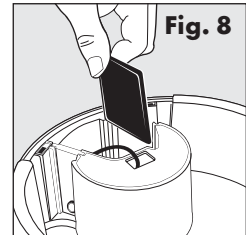
7. Once the intake plate is removed, remove the impeller (white, 3-bladed propeller). The impeller is held in place by a magnet. Simply use a fingernail to get underneath the blade and lift out (**Fig. 7**).



8. Rinse all pet fountain parts, including the pump, with warm water before operating the pet fountain. This will remove any dust or residue that remain in the system from the manufacturing process. Then reassemble the pump and pet fountain, leaving only the lid off.

9. Rinse the charcoal filter thoroughly under cold water before placing in the pet fountain. This will remove any loose carbon dust, which is harmless. A small amount of carbon dust may also shed for the life of the filter. This is normal and not harmful to your pet.

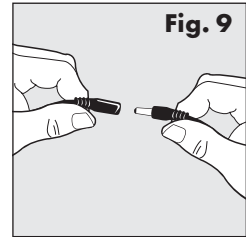
10. Insert the charcoal filter. The filter will fit between the two triangular slots on the opposite side of the pump from the pump plate. Make sure it is pushed all the way down and that the black side of the charcoal filter is facing toward the pump (**Fig. 8**).



Replace charcoal filter every two to four weeks.

11. Attach the lid by pressing down until you hear it snap in place.

12. Place the pet fountain in a desired location. Fill the pet fountain by pouring water directly into the bowl, this will prime the pump. Leave at least 6 mm of space between the water level and the rim of the bowl.



13. Before you plug in the pet fountain, make sure the electrical power cord, the power adapter and your hands are dry. Connect the in-line plug and make sure no silver is showing, then plug the power adapter into a mains power outlet (**Fig. 9**).

14. Never let the water level fall below 5 cm from the base of the bowl or you might risk pump failure. Add water to the bowl as needed.

15. **Clean the pet fountain once a week.** Hand wash the pet fountain plastic parts with warm water and soap. This pet fountain may also be cleaned with a diluted vinegar solution (20% vinegar, 80% water). Important: Be sure to rinse thoroughly with fresh water. You can also put the pet fountain in the top rack of the dishwasher. Remove the pump before placing the pet fountain in the dishwasher. Only rinse the filter with water.

Warranty

Two Year Non-Transferable Limited Warranty

This Product has the benefit of a limited manufacturer's warranty. Complete details of the warranty applicable to this Product and its terms can be found at www.petsafe.net and/or are available by contacting your local Customer Care Centre.

Europe – Radio Systems PetSafe Europe Ltd., 2nd Floor, Elgee Building, Market Square, Dundalk, Co. Louth, A91 YR9X Ireland

Canada – Radio Systems Corporation, 10427 PetSafe Way, Knoxville, TN 37932 USA

Australia/New Zealand – In compliance with the Australian Consumer Law, Warranties Against Defects, effective January 1, 2012, warranty details of this Product are as follows: Radio Systems Australia Pty Ltd. (hereinafter referred to as "Radio Systems") warrants to the original retail purchaser, and not any other purchaser or subsequent owner, that its Product, when subject to normal and proper residential use, will be free from defects in material or workmanship for a period of two (2) years from the purchase date. An "original retail consumer purchaser" is a person or entity who originally purchases the Product, or a gift recipient of a new Product that is unopened and in its original packaging. When serviced by Radio Systems Customer Service, Radio Systems covers labour and parts for the first two years of ownership; after the first two years, a service or upgrade charge will apply relative to replacement of the Product with new or refurbished items at Radio Systems' sole discretion.

The limited warranty is non-transferable and shall automatically terminate if the original retail consumer purchaser resells the Radio Systems Product or transfers the property on which the Radio Systems Product is installed. This Limited Warranty excludes accidental damage due to dog chews; lightning damage; or neglect, alteration, and misuse. Consumers who purchase products outside of Australia, New Zealand, or from an unauthorised dealer will need to return the Product to the original place of purchase for any warranty issues.

Please note that Radio Systems does not provide refunds, replacements, or upgrades for change of mind, or for any other reason outside of these Warranty terms.

Claims Procedure: Any claim made under this Warranty should be made directly to Radio Systems Australia Pty Ltd. Customer Care Centre at:

Radio Systems Australia Pty Ltd.

PO Box 7266, Gold Coast Mail Centre QLD 9726, Australia

Australia Residents: 1800 786 608

New Zealand Residents: 0800 543 054

Email: aus-info@petsafe.net

To file a claim, a proof of purchase must be provided. Without a proof of purchase, Radio Systems will not repair or replace faulty components. Radio Systems requests the Consumer to contact the Radio Systems Customer Care Centre to obtain a Warranty Return number, prior to sending the Product. Failure to do so may delay in the repair or replacement of the Product.

If the Product is deemed to be faulty within 30 days from date of original purchase, Radio Systems will organise for a replacement to be sent in advance of returning the faulty Product. A Post Bag will be included with the replacement Product for the return of the faulty Product. The Product must be returned within 7 days of receiving the replacement. If the Product is deemed to be faulty after 30 days from the date of original purchase, the consumer will be required to return the Product to Radio Systems at the consumer's own expense. Radio Systems will test and replace the faulty unit or its components and return to the consumer free of charge, provided the Product is within its said warranty period. This warranty is in addition to other rights and remedies available to you under the law. Radio Systems goods come with guarantees that cannot be excluded under the Australia Consumer Law. You are entitled to a replacement or refund for a major failure and for compensation for any other reasonably foreseeable loss or damage. You are also entitled to have the goods repaired or replaced if the goods fail to be of acceptable quality and the failure does not amount to a major failure.

Should you have any queries or require any further information, please contact our Customer Care Centre on 1800 786 608 (Australia) or 0800 543 054 (New Zealand).

Important Recycling Advice

Please respect the Waste Electrical and Electronic Equipment regulations in your country. This equipment must be recycled. If you no longer require this equipment, do not place it in the normal municipal waste system. Please return it to where it was purchased in order that it can be placed in our recycling system. If this is not possible, please contact the Customer Care Centre for further information.

Compliance

CE

This equipment complies with the EMC and Low Voltage Directives. Unauthorised changes or modifications to the product that are not approved by Radio Systems Corporation may violate EU regulations, could void the user's authority to operate the equipment, and will void the warranty.

The Declaration of Conformity can be found at:
http://www.petsafe.net/customer-care/eu_docs.php.

ACMA

This device complies with the applicable EMC requirements specified by the ACMA (Australian Communications and Media Authority).

Terms of Use and Limitation of Liability

1. **Terms of Use**

Use of this Product is subject to your acceptance without modification of the terms, conditions and notices contained herein. Use of this Product implies acceptance of all such terms, conditions and notices. If you do not wish to accept these terms, conditions, and notices, please return the Product, unused, in its original packaging and at your own cost and risk to the relevant Customer Care Centre together with proof of purchase for a full refund.

2. **Proper Use**

If you are unsure whether this Product is appropriate for your pet, please consult your veterinarian or certified trainer prior to use. Proper use includes, without limitation, reviewing the entire Operating Guide and any specific safety information statements.

3. **No Unlawful or Prohibited Use**

This Product is designed for use with pets only. Using this Product in a way that is not intended could result in violation of Federal, State or local laws.

4. **Limitation of Liability**

In no event shall Radio Systems Corporation or any of its associated companies be liable for (i) any indirect, punitive, incidental, special or consequential damage and/or (ii) any loss or damages whatsoever arising out of or connected with the misuse of this Product. The Purchaser assumes all risks and liability from the use of this Product to the fullest extent permissible by law.

5. **Modification of Terms and Conditions**

Radio Systems Corporation reserves the right to change the terms, conditions and notices governing this Product from time to time. If such changes have been notified to you prior to your use of this Product, they shall be binding on you as if incorporated herein.

PetSafe® products are designed to enhance the relationship between you and your pet. To learn more about our extensive product range which includes Containment Systems, Training Systems, Bark Control, Pet Doors, Health & Wellness, Waste Management and Play & Challenge products, please visit www.petsafe.net.

Les produits PetSafe® sont conçus pour améliorer la relation entre vous et votre animal de compagnie. Pour en savoir plus sur notre vaste gamme de produits, comprenant des systèmes de confinement, de dressage, de contrôle de l'aboiement, des chatières, des produits consacrés à la santé et au bien-être, de gestion des déjections, ainsi qu'au jeu et aux défis, rendez-vous sur notre site www.petsafe.net.

PetSafe®-producten zijn ontworpen om de relatie tussen u en uw huisdier te verbeteren. Bezoek onze website op www.petsafe.net voor meer informatie over onze uitgebreide productreeks die onder meer omheiningssystemen, trainingssystemen, blafbeheersing, kattenluiken, gezondheid en welzijn, afvalbeheersing en producten voor spel en uitdaging omvat.

Los productos PetSafe® están diseñados para mejorar la relación entre usted y su mascota. Para saber más acerca de nuestra amplia gama de productos, que incluyen limitadores de zona, sistemas de adiestramiento, control de ladridos, puertas para mascotas, salud y bienestar, gestión de residuos y productos de juego y reto, visite www.petsafe.net.

I prodotti PetSafe® sono progettati per migliorare la qualità della relazione tra voi e il vostro cane. Per ulteriori informazioni sulla nostra estesa gamma di prodotti comprendente sistemi antifuga, soluzioni per l'addestramento, controllo dell'abbaio, porte per animali domestici, i prodotti della linea salute e benessere, gestione dei rifiuti e gioco e prova, visitare: www.petsafe.net.

PetSafe® Produkte sind darauf ausgelegt, die Beziehung zwischen Ihnen und Ihrem Haustier zu verbessern. Um mehr über unsere breite Produktpalette zu erfahren, die Rückhaltesysteme, Trainingssysteme, Bellkontrolle, Haustiertüren, Gesundheit & Wellness, Haustiertoiletten und Sport und Spiel umfasst, besuchen Sie bitte uns auf www.petsafe.net.

Radio Systems Corporation
10427 PetSafe Way
Knoxville, TN 37932
+1 (865) 777-5404

Radio Systems PetSafe Europe Ltd.
2nd Floor, Elgee Building, Market Square
Dundalk, Co. Louth, A91 YR9X Ireland
+353 (0) 76 892 0427

www.petsafe.net

RE400-2126-19/1

©2017 Radio Systems Corporation