

## Common size of different dogs

Size	Neck (cm)	Chest Measurement (cm)	Back Length (cm)	Type
Mini	20-22	25-30	19	Chihuahua, Yorkshire Terrier
Small	20-24	29-36	23	Chihuahua, Yorkshire Terrier, Poodle, Pomeranian
Medium	23-28	35-42	28	Maltese Dog, Shih Tzu
Large	27-31	41-47	31	Miniature Schnauzer, Pekingese
Large	30-34	46-53	35	Schnauzer, English Cocker Spaniel
Large	33-37	52-59	40	Beagle
Huge	43-48	76-84	60	Husky
	47-52	88-97	65	Labrador Retriever
	52-62	92-100	70	Golden Retriever, Old English Sheepdog

## LIMITED 90 DAYS WARRANTY

Petrainer warrants this product to be free of defects in parts, materials and workmanship for a period of 90 days, from date of purchase.

Should any repairs or servicing under this warranty be required, contact Customer Service by phone or email for instructions on how to pack and ship the product to Petainer.

## Petrainer CUSTOMER SERVICE

Telephone: 1-866-877-7949 (US&CA only)

Email: [service@ipets-mall.com](mailto:service@ipets-mall.com)

Hours: Weekdays 9:00 AM- 5:00 PM EST

This warranty gives you specific legal rights and you may also have other rights which vary from state to state.



## Rechargeable and Waterproof LCD Remote Pet Training System Operating Guide

Please read this entire guide before beginning

Model Number:

IS-PET998DB 1 for 1

IS-PET998DBB 1 for 1



Model Number:

IS-PET998DB 1 for 2

IS-PET998DBB 1 for 2



# Important Safety Information

## WARNING

**Not for use with aggressive dogs.** Do not use this product if your dog is aggressive, or if your dog is prone to aggressive behavior. Aggressive dogs can cause severe injury and even death to their owner and others. If you are unsure whether this product is appropriate for your dog, please consult your veterinarian or certified trainer.

## CAUTION

**Risk of Skin damage.** Please read and follow the instructions in this manual. Proper fit of the collar is important. A collar worn for too long or made too tight on the pet's neck may cause skin damage. Ranging from redness to pressure ulcers, this condition is commonly known as bedsores. These collars can cause pressure necrosis if used incorrectly and is often misidentified as burns.

- Avoid leaving the collar on the dog for more than 12 hours per day.
- When possible reposition the collar on the pet's neck every 1 to 2 hours.
- Check the fit to prevent excessive pressure; follow the instructions in this manual.
- Never connect a lead to the electronic collar; it will cause excessive pressure on the contacts.
- When using a separate collar for a lead, don't put pressure on the electronic collar.
- Wash the dog's neck area and the contacts of the collar weekly with a damp cloth.
- Examine the contact area daily for signs of a rash or a sore.
- If a rash or sore is found, discontinue use of the collar until the skin has healed.
- If the condition persists beyond 48 hours, see your veterinarian.

These steps will help keep your pet safe and comfortable. Millions of pets are comfortable while they wear stainless steel contacts. Some pets are sensitive to contact pressure. You may find after some time that your pet is very tolerant of the collar. If so, you may relax some of these precautions. It is important to continue daily checks of the contact area. If redness or sores are found, discontinue use until the skin has fully healed.

Thank you for choosing Pettrainer Rechargeable and Waterproof LCD Remote Pet Training System. Our mission is to ensure your pet's safety by providing you the tools and techniques to successfully train your pet.

# Table of Contents

Comments.....	4
How the Pettrainer Rechargeable and Waterproof Training Collar Works.....	5
Features .....	5
Key Definition.....	6
Operating Guide .....	8
Prepare the Remote Transmitter .....	8
Prepare the Receiver Collar .....	9
Pairing the Remote Transmitter and Receiver Collar .....	9
To Test Pettrainer Rechargeable and Waterproof Training Collar.....	10
Fit the Receiver Collar .....	12
Re-Thread the Collar.....	14
Frequently Asked Questions .....	15
Troubleshooting .....	17
General Training Tips .....	18
Common size of different dogs .....	20
LIMITED 90 DAYS WARRANTY .....	20
Petrainer CUSTOMER SERVICE .....	20

## Warning

**Please charge before using the product!**

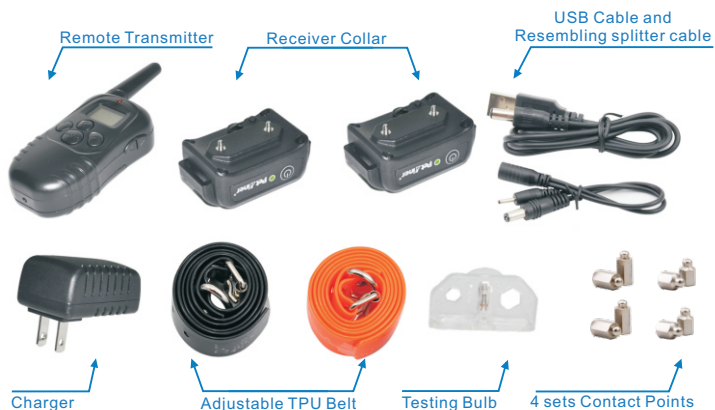
**If putting the transmitter and receiver collar in storage for a long time, please charge both fully before leaving them idle and continue charging once every month.**

# Components

## IS-PET998DB 1 for 1



## IS-PET998DB 1 for 2



## How the Pettrainer Rechargeable and Waterproof LCD Remote Pet Training System Works

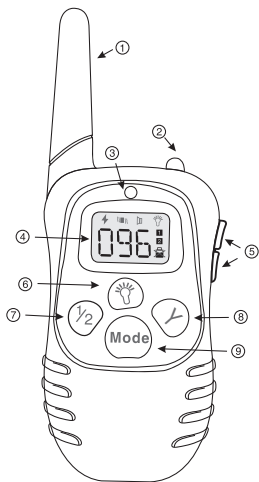
Petrainer Rechargeable and Waterproof LCD Remote Pet Training System has been proven safe, comfortable, and effective for all pets over 8 pounds. This system assists you in controlling your pet without a leash in a range up to 328 yards (300m). At the push of a button, the Remote Transmitter sends a signal, activating the Receiver Collar. Using the Remote Trainer consistently and correctly, many misbehaviors that your pet exhibits will be corrected or any basic obedience commands can be taught.

**Important:** The Remote Trainer has a range up to 328 yards. Depending on the way you hold the Remote Transmitter, the range may vary. Hold the Remote Transmitter in a horizontal position away from your body to achieve optimum range. Terrain, weather, vegetation, transmission from other radio devices, and other factors will affect the range of your Remote Trainer.

## Features

1. Rechargeable Remote Transmitter and Receiver collar.
2. Waterproof Receiver Collar, allowing your pet to swim in water.
3. 100 levels of vibration.
4. 100 levels of static shock (optional).
5. Alter stimulation levels by pressing the Up & down buttons.
6. Tone button activates a tone on the receiver collar.
7. Power save:
  - The receiver collar will go into deep sleep if there is no operation for 4 minutes and any dog movement will activate the receiver.
  - The transmitter will go into STANDBY MODE if there is no operation after 20 seconds and go into deepsleep after 2 minutes, press any button except the LED light button to activate the transmitter from Standby mode and press the Mode button for 5 seconds to awaken the transmitter from deep sleep mode.
8. The system can be used for 1 or 2 Receiver Collars.
9. Two pairs of metal prongs (short/long) to be suitable for dogs with different fur lengths.

# Key Definition



- |                   |                       |
|-------------------|-----------------------|
| 1. Antenna        | 1 Channel 1           |
| 2. Led light      | 2 Channel 2           |
| 3. LED Indicator  | Low Battery Indicator |
| 4. LCD Screen     | 5. Up/down button     |
| 1-100 level       | 6. Led light button   |
| Static shock mode | 7. Channel button     |
| Vibration mode    | 8. Launch button      |
| Beep mode         | 9. Mode button        |
| Light mode        | 10. Lithium battery   |
|                   | 11. Charging hole     |



- 1. Antenna:** Transmits the signal from the Transmitter to the Receiver Collar.
- 2. Led light:** This light will be on when pressing the LED light button.
- 3. Indication light:** This light will flash when the "Y" button is pressed. The light will be activate when charging as well.
- 4. LCD display:**
  - Static mode: With this mode selected, pressing the "Y" button will cause the receiver to emit shock.
  - Vibration mode: With this mode selected, pressing the "Y" button will cause the receiver to vibrate.
  - Beep mode: With this mode selected, pressing the "Y" button will cause the receiver to emit a beep sound.
  - Light mode: With this mode selected, pressing the "Y" button will cause the LED light on the receiver to flash green once every second. Its primary purpose is to help locate your pet.
  - Channel 1: Indicates the selection of the first collar receiver.
  - Channel 2: Indicates the selection of the second collar receiver.

- 5. Up/down button:** Selects intensity level for Vibration and Static Shock.
- 6. Led light button:** When pressing the LED light button, the LED light on the transmitter will be on.
- 7. Channel button:** Pressing this button will swap between the first and second collar receiver.
- 8. Launch button** Sends the signal from transmitter to receiver, resulting in stimulation, beep or light, depending on your mode selection.
- 9. Mode button:** Press this button to switch between modes. There are 4 modes: Static, Vibration, Beep and light mode.
- 10. Lithium Battery:** 3.7V 240 mAhLiP.
- 11. Charging hole:** Insert charging connector into charging hole to charge the Transmitter.

**Rubber Cover:** Seal charging hole to keep from dust.

**On/ Off/Encode Button:** turn on/off the Receiver Collar and hold it to enter encoding status.



**Charging holes:** Charge for Receiver Collar.

**Contact Points:** Deliver the safe static correction.

**A.** When charging the battery, the red LED light shows up and changes to green LED after fully charged.

**B.** In LED Light mode, press the launch button, the green LED in the Receiver Collar will flash every one second.

**C.** When Standby, the Receiver Collar will flash green LED light every four seconds.

**D.** After turn on the Receiver Collar, press and hold the On/Off/Encode button for 5 seconds to enter encoding period The green LED light will keep flashing for 10 seconds to indicate the encoding time.



A B C D

# Operating Guide

## Step 1 Prepare the Remote Transmitter:

1

### Charge the Remote Transmitter

1. Connect the charger connector to the charging jack.
2. Plug the charger into a standard outlet.
3. The red light on the Transmitter will be on.
4. Charge the Transmitter for 2 hours or until the light indicates charging is complete.
5. After fully charged, the red led will turn off automatically.

**Low battery indicator:** the symbol will show up on the right side of LCD screen when recharging is necessary.

### How to use the Remote Transmitter

1. To turn on/off the Transmitter, hold the Mode button for 5 seconds.
2. Set to the different modes by pressing the Mode Button-The LCD images will change from ⚡ 🔊 📶 📶 .
3. Press up/Down buttons on right hand side of the transmitter to set Vibration or Static Shock level.
4. Press the 1/2 button to swap between channel 1 or 2, depending on which receiver you wish to select.
5. The Remote Transmitter will go into STANDBY MODE if no operation for 20 seconds and will TURN OFF if no operation for 2 minutes.
6. In STANDBY MODE, press any button (except LED light button) to wake up the transmitter. When the transmitter is powered off, hold the Mode button on the Transmitter for 5seconds to TURN ON.



## Step 2 Prepare the Receiver Collar:

2

### Charge the Receiver Collar

1. To TURN ON the Receiver Collar, press the on/off button, a beep will sound, and the green LED will turn on and begin to flash every 4 seconds.
2. Open the rubber cover and insert the charger connector into the charging hole.
3. Plug the charger into a standard outlet.
4. The red LED will be on. (A)
5. Charge the Receiver Collar for 2 hours or until the light indicates charging is complete.
6. After the unit is fully charged, the red LED light will turn to a green LED light automatically. (B)
7. Put the rubber cover back in place.
8. If the battery needs recharging, the receiver collar will beep for 20 seconds.

**Note:** Please check whether the battery needs recharging before you use the device. When you turn on the receiver, if there are beeps for 20 seconds, you need to recharge the receiver collar before using the unit.



## Step 3 Pairing the Remote Transmitter and Receiver Collar:

3

1. Power on the Receiver Collar by pressing the ON/OFF button, a beep will sound.
2. Press and hold the ON/OFF button for 5 seconds until a beep sounds, and the indicating light will begin to flash quickly.

3. Press the Y button on the Remote Transmitter once the Receiver Collar beeps and flashes quickly.

When the Remote Transmitter and Collar Receiver are paired successfully, the Collar Receiver will beep again, and the indicating light will stop flashing quickly.

4. If needing to pair a second Collar Receiver, follow the same steps but first press 1/2 button to different channel.

**Note:** Pairing has to be finished within 10 seconds after the 1st beep from the Receiver Collar. Meaning, you have to press the Y button within 10 seconds of the 1st beep for pairing to be completed.

## Step 4

### To Test Pet Trainer Rechargeable and Waterproof LCD Remote Pet Training System:

The static impulse released by the Receiver Collar cannot be seen with naked eye. You can test the Stimulation with this method:



#### Test Static Shock Function

- Take out the test bulb from the package and place its metal wire against the Receiver Collar's Contact Points.
- Press Mode button on the Remote Transmitter, switch to Shock Mode, confirm using the LCD display that the stimulation level is not at 0, you can press the UP/DOWN button on the right side to adjust.
- Press Y button, test bulb will flash, that means Shock function works.
- Note: If wanting to test the shock function on yourself, please ensure your finger or hand is across both contact points to ensure the connection is complete. Otherwise, user will feel no stimulation.



#### Test Vibration Function

- Press Mode button on the Remote Transmitter, switch to Vibrate mode, confirm using the LCD display that the stimulation level is not at 0, you can press UP/DOWN button on the right side to adjust.
- Press Y button, Remote Collar will vibrate, that means Vibration Function works.



#### Test Beep Function

- Press Mode button of Remote Transmitter, switch to Beep Mode.
- Press Y button, Receiver Collar will beep, that means Beep Mode works.
- **Important:** If the transmitter is in sleep mode (the LCD display is turned off) you must press the "Y" button once to wake up the unit, then press the "Y" button again to send the signal from the remote to the collar receiver. This applies to all functions.



#### Test LED Light Function

- Press LED light Button, LED light will turn on, means LED light button works.

#### Note:

I: If LCD of Remote Transmitter does not display, there is probably two reasons:

1. Light Standby : In order to save power, the Remote Transmitter will go into Standby Mode if there is no operation after 20 seconds, press any button except LED Light Button to activate Remoter Transmitter, LCD will display.
2. Deep Sleep: In order to save power, the Remote Transmitter will go into Deep Sleep Mode if there is no operation after 2 minutes, hold the Mode button for 5 seconds to activate the Remote Transmitter, LCD will display.

II: The receiver collar will go into deep sleep if no operation for 4 minutes. And any movement by the dog will activate the receiver.

If the Receiver Collar has no response when you press the Y button, and the Indication light of the Receiver Collar is not on either, you can shake Receiver Collar or force the dog to move, and the indication light of the Receiver Collar will show green, which means the Receiver Collar is activate and will work.

III: When testing, choose any mode except LED light. When you are under Vibration or Static Shock mode, Intensity Level cannot be at a stimulation level of 0, press UP/DOWN to adjust.

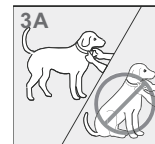


## Step 5 Fit The Receiver Collar with your dogs:

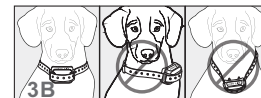
Important: The proper fit and placement of your collar is important for effective training. The Contact Points must have direct contact with your pet's skin on the underside of the dog's neck.

To assure a proper fit, please follow these steps:

1. Have your pet standing comfortably (3A).
2. Centre the Contact Points underneath your pet's neck, touching the skin (3B). If your pet has a long or thick coat, please use longer Contact Points, we enclosed 2 sets Contact Points, short ones and longer ones.



**CAUTION:** here are 100 levels for Vibration and Stimulation. The strong Stimulation can penetrate the hair of the pet and fabric within 6mm thick. **Do not shave the pet's neck as this may increase the risk of skin irritation.**



3. The Collar should fit snugly, yet loose enough to allow one finger to fit between the strap and your pet's neck.(3C)



4. Allow your pet to wear the collar for several minutes then recheck the fit. Check the fit again as your pet becomes more comfortable with the Collar.

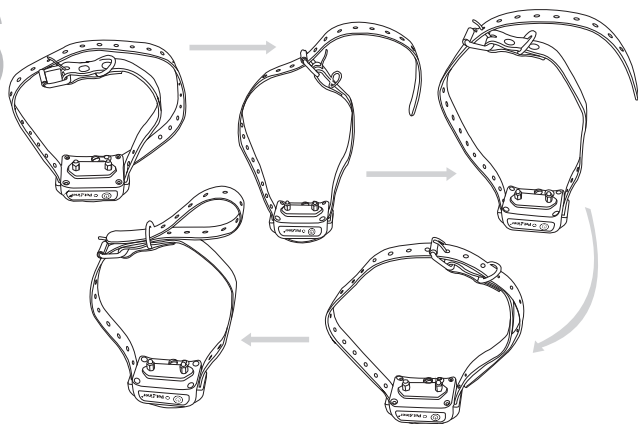
**CAUTION:** Risk of skin damage.

- The Receiver Collar is not designed to be worn constantly. We recommend the Collar not be worn for more than 12 hours out of every 24-hour period.
- Most pets feel uncomfortable at first wearing the collar. Don't use any functions until the pet has gotten used to the collar.
- We suggest you give the dog Vibration before starting the Static Shock. After a time of training, the dog will learn that Static Shock Stimulation will come after Vibration. In this way, the vibration alone can effectively curb the improper deeds of the pet. The Stimulation only acts as a menace that might be unnecessary most of the time.



## Step 6 Re-Thread the Collar (as diagram)

# 6



## Regular Maintenance

- Check Contact Points for tightness weekly.
- Clean Contact Points with alcohol weekly.  
**Note:** remove the battery and discharge Regular the Bark Automatic Control Collar before touching the Contact Points.
- Check your dog's neck for irritation and wash neck weekly.

## Frequently Asked Questions

### How old does my pet have to be before using Pettrainer Rechargeable and Waterproof LCD Remote Pet Training System?

Your pet should be able to recognize basic obedience commands such as "Sit" or "Stay." Pettrainer Rechargeable and Waterproof LCD Remote Pet Training System may be too large for pets under 8 pounds.

### Once my pet is trained and has been obeying my commands, will my pet have to continue to wear the Receiver Collar?

Probably not. You may need to reinforce training with the Receive Collar from time to time.

### Can I use Pettrainer Rechargeable and Waterproof LCD Remote Pet Training System with more than one pet?

Yes, there is 2 series with our Pettrainer Rechargeable and Waterproof LCD Remote Pet Training System, one kind is 1V1 (1 Transmitter to 1 Receive Collar ) TT-PT05;the other one kind is 1V2 (1 Transmitter to 2 Receive Collar) TT-PT06.

### Will I get exactly 328 yards of range with the Remote Trainer?

The effective range of the Remote Trainer means the straight-line distance between Remote Transmitter and Receiver Collar without obstacles in between. Range may vary according to terrain, weather, vegetation, battery capability as well as transmission from other radio devices.

### How long can I continuously deliver vibration or Static Shock to my pet ?

The maximum amount of time you can press the Vibration or Static Shock to your pet continuously is 10 seconds. After this, the Remote Transmitter will time-out, and the Vibration or Static Shock must be released and pressed again.

### Is the Receiver Collar waterproof?

Yes, your pet can swim in the water.



### **What do I do if my pet's neck becomes red and irritated?**

Discontinue use of the Pettrainer Rechargeable and Waterproof LCD Remote Pet Training System for a few days. If the condition persists beyond 48 hours, your veterinarian. Once the skin returns to normal, monitor your pet's skin condition closely.

### **Can I attach a leash to the Receiver Collar?**

NO. This can result in pulling the Contact Points too tightly against your pet's neck. Use a separate collar placed above the Receiver Collar.

### **How will I know when to charge the batteries?**

For Remote Transmitter: the symbol will show up on the right side of LCD screen. For Receiver Collar: will hear a beep for 20 seconds, indicating the device needs to be charged.

### **How long is your lithium battery lifetime?**

Our Lithium battery can charge 400 times for remote Control and Receiver Collar.

### **How long can I leave Receiver Collar on my dog?**

The Collar is not designed to be worn constantly. We recommend the Collar not be worn for more than 12 hours out of every 24-hour period.

### **How long should my training sessions be for my pet?**

Training sessions should be kept positive and short, it is better for about 10-15 minutes long each session.

### **What kind of dogs are your Pettrainer Rechargeable and Waterproof LCD Remote Pet Training System suitable for?**

The collar is adjustable from length 5.9"(15cm) to 19.6"(50cm), if your pet's neck is smaller than 5.9", you have to rethread it, if your pet's neck is larger than 22", please don't buy it: and this Collar is not suitable for the dogs less than 8 pounds either.

## **Troubleshooting**

### **My pet does not respond after correct installation Pettrainer Rechargeable and Waterproof Training Collar.**

- You need to charge the Remote Transmitter and Receiver Collar for 2 hours individually first.
- You need to turn on the Remote Transmitter By holding the mode button for 5 seconds.
- Check the levels of vibration or static shock.  
Make sure the Receiver has enough power to operate.
- Restart the Receiver collar by pressing the on/off button.
- Test 4 functions (Beep, Light, Vibration and Shock) first before using. See part "Test" of Operation Guide.
- Intensity level has to be more than "0" when pairing. Test launch for vibration and Static Shock Function.
- The Receiver Collar will go into deep sleep if no operation for 5 minutes and any dog movement will activate the device.
- Make sure the Contact Points are placed snugly against your pet's skin.
- Trim your pet's fur where the Contact Points touch the neck or switch to the longer Contact Points.
- If none of the above works, you can try repairing between the Remote Transmitter and Receiver Collar. (See part "Pairing" of Operation Guide)

### **Remote Transmitter does not work.**

- You need to charge the Remote Transmitter for 2 hours when you get product for the first time.
- Check if the Remote Transmitter is on low battery status, the symbol will show up on the right side of the LCD screen.
- You need to hold the Mode button on the Remote Transmitter for 5 seconds to power it the device on.
- Remote Transmitter automatically goes into standby mode if no action is detected within 20 seconds, at this time there will be no LCD display. Press any button to re-activate the Remote Transmitter.
- Remote Transmitter will automatically goes into deep sleep status if no action is detected within 2 minutes. At this time, there will be no LCD display. You have to press "Mode" button for 5 seconds until the LCD display reappears.

**My Receiver Collar works great for some time, but it does not work anymore after I charged the device.**

- First, check if charging is successful, when you are charging, red LED light will be on, after fully charged, the red led light will turn off automatically.

**The Receiver Collar is damaged and it doesn't work after being knocked down.**

- You have to turn on Receiver Collar again after you're finished charging.

**We turned on the receiver collar and it starts to beep for 20 seconds.**

- Receiver Collar will beep for 20 seconds in low battery status unless it gets charged. Charge it for 2 hours and the other functions will work after charging is finished.
- Our Receiver Collar is designed to not be knocked down, please don't knock down the device, to avoid breaking structure and circuits.

**I want to test Receiver Collar myself, but it does not work.**

- If you test Receiver Collar by your hand or leg, please touch the 2 electrodes at the same time, only touching one electrode will not work.

## General Training Tips

**The following are tips on how to get the best out of your Pettrainer Remote Pet Training Collar:**

- (1) Make the training sessions short and positive (between 10-15 minutes long for each time), which will enable your dog to keep its attention focused on you.
- (2) Train one dog at a time.
- (3) During initial training sessions, keep your dog in a familiar outdoor environment e.g. an enclosed area of the garden and away from other dogs/ animals and people. Training in new locations may cause your dog to become distracted causing you to reinforce your commands with the remote collar-receiver more often collar-receiver more than accordingly.
- (4) Use a long leash fastened to a non-metallic collar to help his/her learning. Ensure the additional collar and leash does not interfere with the skin contact of the metal probes on the collar-receiver. Do not use the remote training collar without a long leash until your dog is fully trained.

(5) You will have more success by teaching the dog a command first before trying to reinforce to command with the remote trainer.

(6) For basic obedience training, VIBRATION and AUDIO modes are more useful.

(7) Issue an obedience command at a time, which will focus your dog's attention and reduce confusion. Do not use the remote collar to correct commands that have not already been covered.

(8) During training, look for all the positive changes in your dog's behavior and remember to reinforce them promptly with ample praise and reward.

(9) Avoid over-correcting your dog. Use as few remote corrections as possible during the training process.

(10) When your dog has become apparently perplexed, shift the focus of the training session by drawing his/her attention to a command they are familiar with, e.g. sit. Give your dog praise and encouragement galore on successful completion of the command. Repeat this several times before returning to training with remote corrections.

(11) If you know a particular misbehavior your dog does, then reinvent this situation during a training session. You will have far more success if you deal with one misbehavior at a time in a controlled situation.

(12) Be consistent; give your dog a tone, vibration or static-stimulation correction for each misbehavior. When reinforcing a command with a correction. It is critical that you do so without emotion then immediately praise and reward your dog for marking the right decision.

(13) When your dog seems to react in a timid and frightened fashion to either the tone, vibration or static-stimulation, particularly in early training sessions, do not be flabbergasted. Shift the focus of the training session by drawing his/her attention to a command they are familiar with. E. G. sit and give your dog abundant praise and encouragement on successful completion of the command.

(14) Do not use Pettrainer Remote Pet Training Collar to correct or eliminate form of aggression or biting behavior. When your dog is showing signs of aggressive behavior then contact a professional dog trainer in your vicinity.

(15) Please be reminded that you should keep training sessions short and end every session on a high note. Stop training and play with your dog as soon as he/she has accomplished a new level of proficiency.

If needing more training tips, please visit us at [www.ipets-mall.com](http://www.ipets-mall.com) or [www.facebook.com/ipetsmall](https://www.facebook.com/ipetsmall) for plenty of resources.