



User Manual

Training Collar System

www.ipets-mall.com

Table of Contents

Components.....	3
How the Dog Training System Works.....	4
Features.....	4
Key Definitions.....	5
Remote Transmitter.....	5
Collar receiver.....	6
Operating Guide.....	7
Step 1 Prepare the remote transmitter.....	7
Step 2 Prepare the collar-receiver.....	8
Step3 Sync the remote transmitter with the collar-receiver.....	9
Step 4 Test the training system.....	10
Step 5 Fit the collar-receiver.....	12
Step6 Re-thread the collar.....	13
Frequently Asked Questions.....	14
Troubleshooting.....	16
General Training Tips.....	17
Addendum and Upgrading Notes:.....	19
LIMITED 90 DAYS WARRANTY.....	19
Petainer CUSTOMER SERVICE.....	19

Important Safety Information

WARNING: NOT FOR AGGRESSIVE DOGS. Do not use this product if your dog is aggressive, or if your dog is prone to aggressive behavior, aggressive dogs can cause severe injury and even death to their owner and others. If you are unsure whether this product is appropriate for your dog, please consult your veterinarian or certified trainer.

CAUTION:

Risk of skin damage: Please read and follow the instructions carefully in this guide, proper fit of the collars is important because a loose collar may cause inconsistent performance. A collar worn for too long or made too tight on the pet's neck may cause skin damage, ranging from redness to pressure ulcers (commonly known as bedsores). These collars can cause pressure necrosis if used incorrectly and is often misidentified as burns.

- Avoid leaving the collar on the dog for more than 12 hours per day.
- When possible reposition the collar on the pet's neck every 1 to 2 hours.
- Check the fit to prevent excessive pressure, and it is okay to trim any excess strap length.
- Never connect a lead to the electronic collar because it may cause excessive pressure on the contacts.
- Wash the dog's neck area and contacts of the collar weekly with a damp cloth.
- Examine the contact area daily for signs of a rash or a sore.
- If a rash or sore is found, discontinue use of the collar until the skin has healed.
- If the condition persists beyond 48 hours, see your veterinarian.

These steps will help your pet safe and comfortable. Millions of pets are comfortable while wearing stainless steel contacts. Some pets are sensitive to contact pressure. You may find after some time that your pet is very tolerant of the collar. If so you may relax some of these precautions, it is important to continue daily checks of the contact area. If redness or sores are detected, discontinue use until the skin has fully healed.

Thank you for choosing the Pettrainer brand! You and your pet deserve a companionship that includes memorable moments and a shared understanding together. Our mission is to ensure your pet's safety by providing you the tools and techniques to successfully train your pet. Should you have any queries, please contact our customer service.

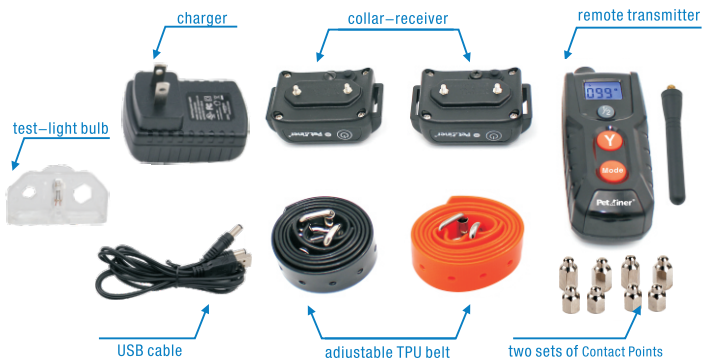
NOTE: Please charge before using the product.

Components

PET916-1(1 for 1)



PET916-2(1 for 2)



How the dog training system works?

This system has been proven safe, comfortable, and effective for all pets over 15lbs, it assists you in controlling your pet without a leash in a range up to 300m. At the push of a button, the remote transmitter sends a signal, activating the collar-receiver. Using the remote trainer consistently and correctly, most misbehaviors that your pet exhibits can be corrected or any basic obedience commands taught. It can also be used to deter such unwanted behaviors as jumping up, digging and chasing. While the stimulation is startling it is harmless to your pet. Electronic training devices require interaction and training from the owner to achieve desired results.

Important: The system has a range up to 300m. Depending on the way you hold the remote transmitter, the range may vary. Hold the remote transmitter in a horizontal position away from your body to achieve optimum range. Terrain, weather, vegetation, transmission from other radio devices, and other factors will affect the range of your remote transmitter.

Features

1. Rechargeable remote transmitter and collar-receiver.
2. The remote transmitter and collar-receiver are waterproof and can withstand light rain showers, yet we advise against submerging it into water, mainly for the sake of extending its life span.
3. LCD display with blue backlight screen for night using.
4. Four modes (static/vibration/beep/light) at your disposal.
5. 100 intensity levels of vibrations
6. 100 intensity levels of static shocks
7. Intensity levels can be adjusted by pushing UP/DOWN button.
8. Power saving:
 - The collar-receiver, if left unused for 5 minutes, will enter into "SLEEP" status, yet any movement from the dog can activate the receiver again.
 - The remote transmitter, if left unused for 2 minutes, will enter into "STANDBY" status; if unused for 5 minutes, it will enter into "DEEP SLEEP" status. To activate the transmitter in separate cases, you can simply press any button (except the LED light button) and the "MODE" button (for 1 second) separately.
9. The training system can be used for 1 or 2 collar-receivers.

Key Definitions

► Remote Transmitter



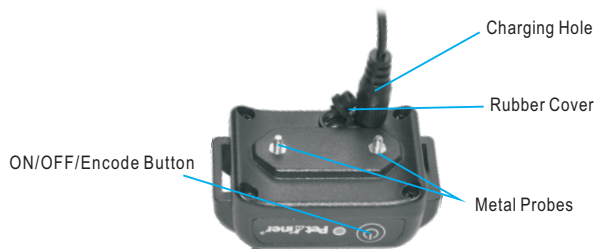
1. Antenna: Transmits signal to the collar-receiver

2. LCD Screen:

- **Static Mode:** Under this mode, when “Y” button is pressed, the collar-receiver will shock; static levels can be adjusted from 0 to 100 by pressing the UP/DOWN button.
- **Vibration Mode:** Under this mode, when “Y” button is pressed, the collar-receiver will vibrate; vibration levels can be adjusted from 0 to 100 by pressing the UP/DOWN button.
- **Beep Mode:** Under this mode, when “Y” button is pressed, the collar-receiver will give a warning beep.

- **Light Mode:** Under this mode, when “Y” button is pressed the green LED light the receiver will flash every one sec, rendering it convenient to locate your pet: (esp. in the dark).
 - $\frac{1}{2}$ button indicates channel 1 or 2 on the transmitter, select one channel for use with one collar-receiver.
- 3. LED Indicator:** It will flash when “Y” button is pressed and serves as battery charging indicator
 - 4. Y Button:** It indicates the LAUNCH button, which will send the correction signal to the collar-receiver.
 - 5. Mode Button:** It indicates audio, vibration and static-shock correction modes on the LCD-display screen.
 - 6. Up/Down button:** Press the Up/Down buttons on the right hand side of the transmitter to set the level of correction you wish to administer. (WARNING: ALWAYS BEGIN WITH A LOW-LEVEL SETTING IN THE INITIAL TRAINING STAGES).
 - 7. Channel Button:** When the CHANNEL button “1/2” is pressed, you can sync the collar-receiver and the transmitter via different channel.
 - 8. Charging Hole:** for remote transmitter charging.

► Collar receiver:



- 1. Metal Probes:** Deliver vibration and static stimuli.
- 2. ON/OFF/Encode Button:** Turn on/off the collar-receiver; hold it for a few seconds to encode the receiver.
- 3. Rubber Cover:** After completion of charging please put the cover in place to safeguard the internal unit from dust and water.

4. Charging Hole: for collar-receiver charging.



- A When charging, the LED light is red; when fully charged, it turns to green.
- B Under "light" mode, press the "launch" mode, and the LED light in the collar-receiver will flash green every one sec.
- C In "standby" status, the LED light in the collar-receiver will flash green every four seconds.
- D After turning on the receiver, press and hold the ON/OFF/ENCODE button for five seconds to encode it.

Operating Guide

Step Prepare the remote transmitter:

1

Charge the remote transmitter

1. Connect the charger connector to the charging hole.
2. Plug the charger into a standard outlet.
3. The red light in the transmitter will be on, indicating that charging is taking place.
4. Charge the transmitter at least 2 hours for first charge or until indication that charging is complete.
5. When charging is complete, the red light will turn off automatically.
6. Low Battery Indicator "🔋" signals the need for recharging.

How to use the remote transmitter

1. To turn on/off the transmitter, press any button on the transmitter.
2. Press the MODE button to toggle among 4 different modes



3. Press UP/DOWN buttons on the light hand side of the transmitter to adjust the intensity level of vibration or static shock.
4. "1/2" button indicates either channel 1 or channel 2 on the transmitter. Select one channel for use with one collar-receiver.
5. The remote transmitter will go into STANDBY MODE if no operation for 2 minutes and will turn off if no operation for 5 minutes.
6. In STANDBY MODE, press any button to wake it up. When turned off, press and hold the MODE button for 1 second to turn on the transmitter.



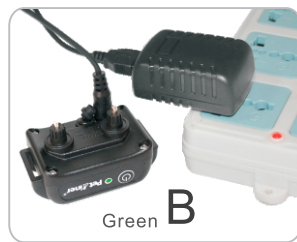
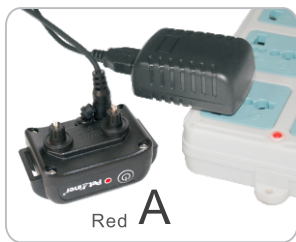
Step Prepare the Collar-receiver:

2

Charge the collar-receiver

1. Connect the charger connector to the charging jack.
2. Plug the charger into a standard outlet.
3. The red LED light in the collar-receiver will turn on. (A)
4. Charge the collar-receiver for at least 2 hours for the first charge or until indication that charging is complete.
5. After the receiver has been fully charged, the red light LED light will turn off automatically. (B)
6. When charging is finished, put the rubber cover in place to keep the internal unit from dust and water.

NB: The collar-receiver will keep for 20 seconds if it needs recharging.



(Figure 2-1)



(Figure 2-2)

Step 3 Sync transmitter with collar-receiver:

1. Power on the remote transmitter by pressing any button on the transmitter.
2. Select channel 1 or 2.
3. Power on the Receiver Collar by press the ON/OFF button on collar, a beep will sound.
4. Press ON/OFF button afresh and hold it for 5 seconds, and then the LED light will start to flash.
5. Now you can hear the first beep from the collar-receiver and then press the "Y" button (of the transmitter) immediately
6. You will hear the second beep from the receiver, which signifies that the transmitter and the receiver have been synced.
7. To sync the transmitter and the second receiver, repeat step 2 through 6.
8. Please be sure to choose the other channel.

NB: According to the factory default settings, when the collar-receiver has been turned on the syncing should be completed within 10 seconds, thereby you have to press the "Y" button in good time or press it at least within 10 seconds. Please DO NOT try to sync the transmitter with the two collar-receivers (if any) at the same time.

Step 4 Test the training system

The following testing methods will help you ascertain whether this training system functions swimmingly. Please make sure that you have connected the transmitter and collar-receiver before testing.

Test the static shock function (Figure 2-1)

Put the test-light on the contact points of the collar-receiver. Turn on the remote transmitter, switch to SHOCK mode and press the UP/DOWN button to adjust the intensity level.

Press "Y" button and the bulb will flash, signifying that the SHOCK function works. Please make sure the SHOCK level is above 0 when testing the function.

Note: If wanting to test the shock function on yourself, please ensure your finger or hand is across both contact points to ensure the connection is complete. Otherwise, user will feel no stimulation.

Test the vibration functions (Figure 2-2)

Turn on the remote transmitter, switch to VIBRATION mode and press the UP/DOWN button to adjust the vibration level.

Press "Y" button and the collar-receiver will vibration, signifying the VIBRATION function works. Please make sure the vibration level is well above 0 when test the function.

Test the beep function (Figure 2-3)

Turn on the remote transmitter, switch to BEEP mode.

Press "Y" button, the collar-receiver will beep, signifying the BEEP function works.

Important: If the transmitter is in sleep mode (the LCD display is turned off), you must press the "Y" button once to wake up the unit, then press

the “Y” button again to send the signal from the remote to the collar receiver. This applies to all functions.

Test the LED light function (Figure 2-4)

Turn on the remote transmitter, switch to LED LIGHT mode.

Press “Y” button, the collar-receiver will flash, signifying the LED LIGHT function works.



(Figure 2-3)



(Figure 2-4)

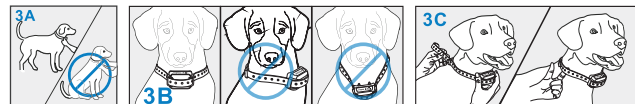
NB:

1. The screen of the remote transmitter does not display when:
 1. It is in STANDBY mode: to save power, the transmitter will go into STANDBY mode if there's no operation in 2 minutes; you can press any button except for the LED LIGHT button to activate it and then its screen will display.
 2. It is in DEEP SLEEP mode: to save power, the transmitter will go into DEEP SLEEP mode if there's no operation in 5 minutes; you can hold and press the MODE button for 1 second to activate it and then its screen will display.
2. The collar-receiver will go into DEEP SLEEP mode if there is no operation for 5 minutes. Any movement will activate it. If the receiver has no response then you press “Y” button and its indicator light is not on either, then you can shake it or let your dog move to activate it. (If you shake the receiver, you'll hear a rattling noise caused by the built-in vibration sensor which indicates that it is in working status).

Step 5 Fit the collar-receiver

Important: The proper fit and placement of the collar-receiver is essential for effective training. The metal contact probes must have direct contact with your dog's skin as follows:

- (1) To fit the collar-receiver you will need to attach the collar-strap to the receiver box. Ensure you have selected the appropriate length metal probes for your dog (i.e. long-length probes for long-haired dogs and short-length for short-haired dogs). **(3A)**
- (2) With your dog standing in front of you, place the collar-receiver around its neck so the receiver box and probes are on the underside of your dog's neck, making direct contact with the skin. You may need to trim the fur to ensure good contact. **(3B)**
- (3) Fasten the collar-strap. The fit should be snug, but not taut. You should be able to place one finger beneath the collar-strap around your dog's neck. **(3C)**
- (4) Allow your dog to wear the collar-receiver for several minutes and then check the strap again. As your dog becomes more familiar with the collar-receiver you should ensure the fit is comfy and flattering.



CAUTION: RISK OF SKIN DAMAGE

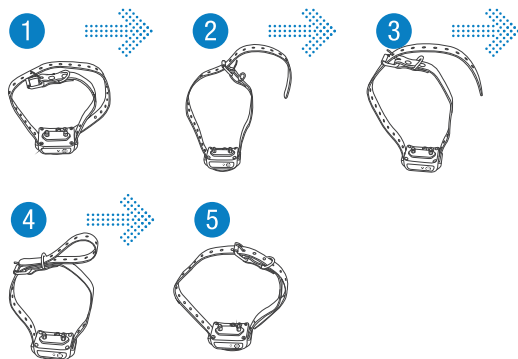
- For comfort, safety and effectiveness of this product please see to it that you check the fit of your pet's collar frequently. If any skin irritation is observed, discontinue the use of the collar for a few days. If the condition persists beyond 48 hours, see your veterinarian.
- Do not attach a leash to the collar, which can result in squeezing the metal probes too tightly against your pet's neck.
- The collar-receiver is not designed to be worn constantly. We recommend the collar not be worn for more than 12 hours out of every 24-hours period.
- Most pets feel uncomfortable when wearing the collar for the very first time. Don't use any functions before the pet has gotten accustomed to the collar.

- We suggest you give the dog VIBRATION before starting the STATIC SHOCK. After a time of training, the dog will learn that shock will come after vibration. In this way, the vibration alone can effectively curb the misbehaviors of your dog. The STATIC SHOCK only acts as a menace that might be unnecessary sometimes.

Step 6 Re-thread the collar (as diagram)

Regular Maintenance

- Check the metal probes for tightness on a weekly basis.
- Rinse the metal probes with alcohol on a weekly basis. (NB: Please turn off the collar-receiver before touching the metal probes.)
- Check your dog's neck for irritation and wash it on a weekly basis.



Frequently Asked Questions:

How old does a pet have to be before using the system?

Your pet should be able to learn basic obedience commands such as "sit" or "stay". The collar-receiver maybe too large for dog under 15lbs.

Once my pet is trained and has been obeying my commands, will he have to continue to wear the collar?

Probably not. But you may try to reinforce training with the collar.

Can I use the Pettrainer rechargeable training collar with more than one pet?

Yes, you just need to add another collar to the system.

How long can I continuously deliver vibration or static shock to my pet?

Ten seconds. After ten seconds, the transmitter will time out and should be started again.

Is the collar-receiver waterproof?

Yes, yet you have to ensure that its charging hole is sealed by the rubber cover.

Can I use the system on aggressive pets?

No. Please do not use this system to correct or eliminate any form of aggression or biting behavior. In the event your dog is showing signs of aggressive behavior then contact a professional dog trainer in your vicinity.

Will I get exactly 300m of range with the Pettrainer rechargeable training collar?

The range you get with this system will vary according to terrain, vegetation, as well as transmission from other radio devices. To get the maximum amount of range, please refer to "how the system works" section of this guide.

What do I do if my pet's neck becomes red and irritated?

Discontinue use of the collar until the skin has healed. If the condition persists beyond 48 hours, see your veterinarian.

Can I replace the collar-receiver with another kind of collar?

No.

Can I attach a leash to the collar-receiver?

No. This can result in pulling the metal probes too tightly against your dog's neck. Attach a leash to a separate, nonmetallic collar or a harness, ensuring the extra collar does not put pressure on the metal probes.

How will I know when to charge the system?

For the remote transmitter: the symbol will show up on the LCD screen; for the receiver: if you hear a beep for 20 seconds when it is already on, you will need to charge the receiver.

What's the life-span of the lithium batteries of the remote transmitter and the collar-receiver?

They can be charged over 400 times

How long can I leave collar-receiver on my dog?

As the collar is not designed to be worn constantly, we recommend the collar not be worn for more than 12 hours out of every 24-hour period.

How should I arrange training sessions for my pet?

Make the training sessions short and positive, between 10-15 minutes long, each time. This enable your dog to keep its attention focused on you.

What kind of dogs is Pettrainer rechargeable training collar suitable for?

The collar is adjustable from length 5.9 "(15cm) to 19.6" (50cm), if your pet's neck circumference is smaller than 5.9", you have to rethread it, if your pet's neck circumference is larger than 22", this collar may not be suitable for your pet. This collar is NOT suitable for dogs under 15lbs.

Troubleshooting

My pet is not responding after the Pettrainer pet training system has been installed successfully.

- You need to charge the remote transmitter and the collar-receiver for 2H separately before initial use.
- Check to see if the remote transmitter and the collar-receiver have been turned on.
- Check the intensity levels of vibration and static shock.
- Make sure the collar-receiver has sufficient power to operate.
- Restart the collar-receiver by pressing the ON/OFF button.
- Please test the 4 functions (i.e. BEEP. LIGHT. VIBRATION AND STATIC SHOCK) before initial use. See the "test the training system" part of this guide for testing methods.
- Check whether the collar-receiver has entered into the DEEP SLEEP mode.
- Check if the collar fits snugly with your pet's neck.
- Check the thickness of your pet's fur and use appropriate length metal probes. If necessary, please trim your pet's neck hair so that the metal probes come in direct contact with your pet's skin.
- If all of the above have been addressed and your pet still gives no response. Please try to re-connect the remote transmitter and the collar-receiver.

The remote transmitter does not work.

- Check if the remote transmitter is in low battery status. If the icon "🔋" shows up, battery exhaustion is imminent.
- You have to press and hold the MODE button on the transmitter to turn it on.
- Check if the transmitter has entered into the STANDBY or DEEP SLEEP status.

My collar-receiver works great for some time, yet it does not work after charging.

- First, check if the receiver has been charged correctly. Check the "prepare the collar-receiver" part of the guide for the correct charging method.
- Check if the receiver has been turned on.

I want to test the collar-receiver on myself, but it does not work.

- When testing the receiver on your hands, please touch the 2 electrodes at the same time as touching one single electrode will not work.

General Training Tips

The following are tips on how to get the best out of your PetraTrainer Remote Pet Training Collar:

- (1) Make the training sessions short and positive (between 10-15 minutes long for each time), which will enable your dog to keep its attention focused on you.
- (2) Train one dog at a time.
- (3) During initial training sessions, keep your dog in a familiar outdoor environment e.g. an enclosed area of the garden and away from other dogs/animals and people. Training in new locations may cause your dog to become distracted causing you to reinforce your commands with the remote collar-receiver more often collar-receiver more than accordingly.
- (4) Use a long leash fastened to a non-metallic collar to help his/her learning. Ensure the additional collar and leash does not interfere with the skin contact of the metal probes on the collar-receiver. Do not use the remote training collar without a long leash until your dog is fully trained.
- (5) You will have more success by teaching the dog a command first before trying to reinforce to command with the remote trainer.
- (6) For basic obedience training, VIBRATION and AUDIO modes are more useful.
- (7) Issue an obedience command at a time, which will focus your dog's attention and reduce confusion. Do not use the remote collar to correct commands that have not already been covered.
- (8) During training, look for all the positive changes in your dog's behavior and remember to reinforce them promptly with ample praise and reward.
- (9) Avoid over-correcting your dog. Use as few remote corrections as possible during the training process.
- (10) When your dog has become apparently perplexed, shift the focus of the training session by drawing his/her attention to a command they are familiar with, e.g. sit. Give your dog praise and encouragement galore on successful completion of the command. Repeat this several times before returning to training with remote corrections

(11) If you know a particular misbehavior your dog does, then reinvent this situation during a training session. You will have far more success if you deal with one misbehavior at a time in a controlled situation.

(12) Be consistent; give your dog a tone, vibration or static-stimulation correction for each misbehavior. When reinforcing a command with a correction. It is critical that you do so without emotion then immediately praise and reward your dog for marking the right decision

(13) When your dog seems to react in a timid and frightened fashion to either the tone, vibration or static-stimulation, particularly in early training sessions, do not be flabbergasted. Shift the focus of the training session by drawing his/her attention to a command they are familiar with. E.G. sit and give your dog abundant praise and encouragement on successful completion of the command.

(14) Do not use PetraTrainer Remote Pet Training Collar to correct or eliminate form of aggression or biting behavior. When your dog is showing signs of aggressive behavior then contact a professional dog trainer in your vicinity

(15) Please be reminded that you should keep training sessions short and end every session on a high note. Stop training and play with your dog as soon as he/she has accomplished a new level of proficiency.

If needing more training tips, please visit us at www.ipets-mall.com or www.facebook.com/ipetsmall for plenty of resources.

SIZE	NECK GIRTH (IN)	CHEST GIRTH (IN)	BACK LENGTH (IN)	WEIGHT (LBS)	BREED
X-SMALL	7.8-8.6	9.8-11.8	7.4	1-10	Chihuahua, Yorkshire, Terrier
SMALL	7.8-9.4	11.4-14.1	9.0	11-25	Poodle, Pomeranian
MEDIUM	9.0-11.0	13.7-16.5	11.0	26-40	Shih Tzu, Maltese Dog
LARGE	10.6-12.2	16.1-18.5	12.2	41-70	Miniature Schnauzer, Pekingese
LARGE	11.8-13.3	18.1-20.8	13.7	71-90	English Cocker Spaniel
LARGE	12.9-14.5	20.4-23.2	15.7	91-110	Beagle
X-LARGE	16.9-18.9	29.9-33.0	23.6	N/A	Husky
X-LARGE	18.5-20.4	34.6-38.1	23.6	N/A	Labrador Retriever
X-LARGE	20.4-24.4	36.2-39.3	27.5	N/A	Golden Retriever, Old English Sheepdog

Addendum and Upgrading Notes:

1. Please note that when shaking the receiver you may hear a rattling noise, which is actually caused by the built-in vibration sensor and is by no means an indication of any malfunction in the receiver
2. The range of “up to 300m” specified in the user manual denotes the maximum valid value that can be possibly achieved in ideal conditions. According to multiple hands-on field experiments, this Pettrainer training system has an effective range up to 150-180,

LIMITED 90 DAYS WARRANTY

Pettrainer warrants this product to be free of defects in parts, materials and workmanship for a period of 90 days, from date of purchase.

Should any repairs or servicing under this warranty be required, contact Customer Service by phone or email for instructions on how to pack and ship the product to Pettrainer.

Pettrainer CUSTOMER SERVICE

Telephone: 1-866-877-7949

Email: www.ipets-mall.com

Hours: Weekdays 9:00 AM- 5:00 PM EST

This warranty gives you specific legal rights and you may also have other rights which vary from state to state.