



Welcome to the World of  
**E-Collar Technologies, Inc.**

---

**800/802**  
**1200/1202**  
**Owner's Manual**

**“Happiness is a Well  
Behaved Dog”**

Welcome to the World of E-Collar Technologies, Inc.

---



## **800/1200 Series E-Collar**

**Remote Education Collar**

Thank you for purchasing the 800/802 or 1200/1202 Remote Education Collar from E-Collar Technologies, Inc. We have made every attempt to provide you with the most technologically advanced product using the most stringent quality and manufacturing standards.

We are confident you will be pleased with the results you will attain with your e-collar. Please remember you will get better results with the use of lower stimulation combined with consistent training techniques.

The use of high levels of stimulation should only be used as a last resort and in life-threatening situations. Visit our youtube channel for training videos and "Like" our Facebook page to network with fellow e-collar users.

Good luck with your training and please feel free to contact us should you have any questions.

**1-855-326-5527 or [sales@ecollar.com](mailto:sales@ecollar.com)**

# TABLE OF CONTENTS

---

- Important Notice	03
- Characteristics	04
- Package Contents	05
- Device Operation	06
- Charging the Batteries	07
- Turning Your E-Collar ON/OFF	08
- Correctly Fitting Collar	09
- The LCD Display Description	10
- Button Functions	11
- How to Find the Proper Stimulation Level	13
- Lock/Unlock the Stimulation level	14
- How to Set the Boost	15
- Lost Transmitter Mode	16
- Replace/Add Collar	17

## Two Dog 802/1202 Specifics

- 802/1202 LCD Description	18
- 802/1202 Button Functions	19
- How to Lock/Unlock the Stimulation Level	21
- 802/1202 Boost level Setup	22
- Testing your E-Collar	23
- Replacing the Contact Points	24
- Training Tips	25
- Troubleshooting	26
- Two Year Warranty	27
- Accessories	28
- Safety and general information	30

## Important Notice

---

### Caution

This product is intended to be used on DOGS ONLY.

E-Collar Technologies, Inc. is not responsible for any misuse of this product including damages from dog bites and lost items. Seek an evaluation by professional trainer before use on aggressive dogs. It is not uncommon for aggressive dogs to associate the stimulation with the handler and take action against the handler. Sometimes dogs put under e-collar pressure during a fight can exhibit redirected aggression and become more aggressive.

The use of high levels of stimulation should only be used as a last resort and in life-threatening situations.

To prevent giving stimulation to your dog by accident, keep the stimulation level below 5 while not in use.

The range of the 800/802 or 1200/1202 may vary according to terrain, weather conditions, foliage, and power lines as well as radio transmissions from other devices.

## CHARACTERISTICS

---

- Range : 1 Mile
- Three Stimulation Modes Supported  
(Momentary, Continuous, and Combo Mode)
- Tapping Sensation or Tone Stimulation (Pavlovian Conditioning)

**Tapping Sensation:** Alternative to Stimulation

(gives vibration similar to a Cell Phone)

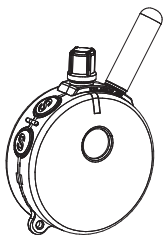
**Tone Stimulation :** After 1.2 seconds of tone, the collar will send stimulation as long as button is pressed (up to 10 seconds), leads to “Pavlovian Conditioning” whereby the dog responds to the tone.

- Quick Charge Li-Polymer Batteries
- Convenient Intensity Dial for Quick Adjustment
- Stimulation Levels Adjustable from 0 to 100
- Collar Receiver Light for locating your dog at night
- Lock and Set Stimulation Safety Feature
- Stimulation Boosting Mode provides instant control when normal stimulation is ignored - great for emergency situations.
- User Adjustable Boosting Levels from 1 to 60 Levels
- Completely Waterproof
- Convertible from 1-Dog model (800/1200) to 2-Dog model (802/1202)

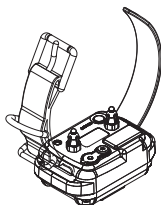
# Package CONTENTS

---

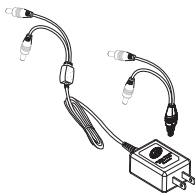
- Transmitter



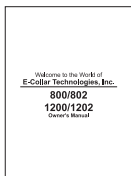
- Collar Receiver with Strap  
(802/1202 Package includes  
2 Receivers and straps)



- Battery Charger  
(802/1202 package  
contains splitter cable)



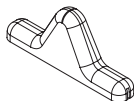
- Owner's Manual



- Extra Contact Points 3/4"



- Test Light



- Contact Point Tool



- Skin removal tool

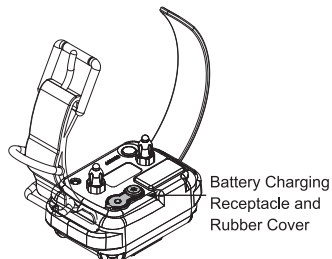
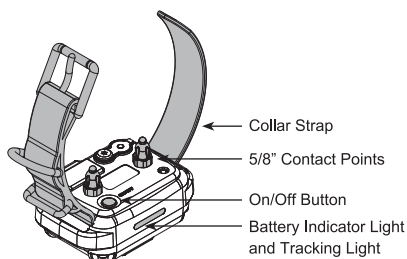
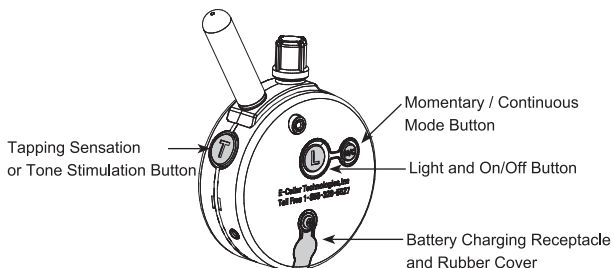
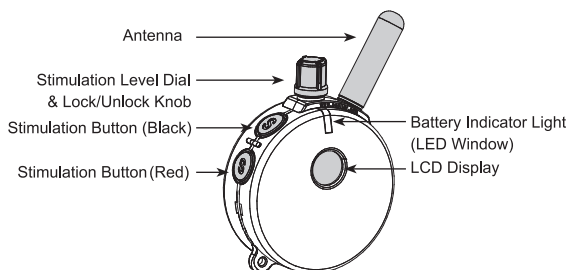


- Lanyard



# DEVICE OPERATION

---



## CHARGING THE BATTERIES

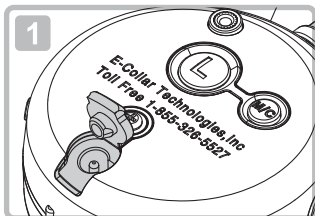
Indicator Light is blinking “Green” under normal operation.

solid “Red” when stimulation is applied.

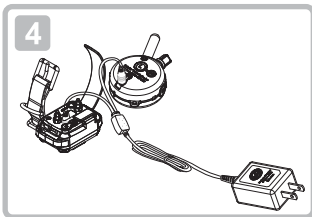
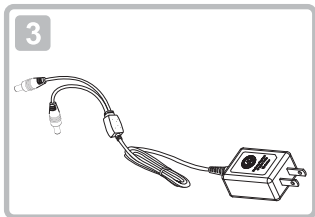
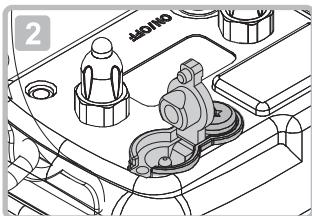
blinking “Red” when recharging is required.

**Do not allow the batteries to get hot or be fully discharged,  
long-term store at room temperature and 50% capacity charge.**

Transmitter Battery Charging  
Receptacle and Rubber Cover



Collar Receiver Battery Charging  
Receptacle and Rubber Cover



- The indicator light will turn solid red during charge cycles and turn green if it is fully charged. (approximately 2 hours)

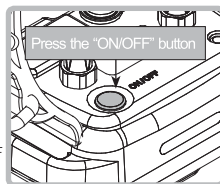
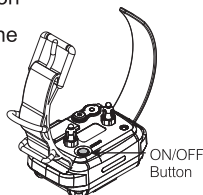
Your e-collar is outfitted with Li Polymer batteries which requires specific care to assure longevity. It is best not to let the battery be fully discharged and if it does, recharge immediately or irreversible damage may occur. Keep the units away from extreme heat and cold.



## TURNING YOUR E-COLLAR ON/OFF

- **To turn the Collar Receiver On or Off :**

Press the "ON/OFF" button until green led lights on the collar receiver.



- **To turn the Transmitter On or Off :**

Press the "L" button for more than 1 second.

If the Transmitter is turned on, a short press of the "L" button will activate the tracking light of the collar receiver. Press and hold for 2 seconds to turn Transmitter off.

- **Holding the Transmitter**

To obtain the maximum range hold the transmitter like the torch on the Statue of Liberty. Keep the antenna away from your body or fingers at all times, touching the antenna will greatly reduce the range.



[ Long Range ]



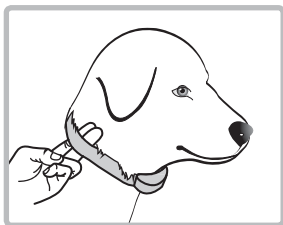
[ Medium Range ]



[ Short Range ]

## CORRECTLY FITTING COLLAR

---



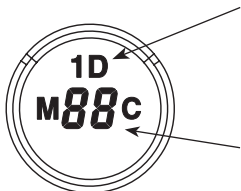
The collar should be adjusted to allow the “contact points” to have direct contact with the skin. You should be able to fit a couple of fingers between the collar strap and your dog's skin. Too tight poses the risk of skin irritation and discomfort. Too loose and the

contact points will not be able to administer the stimulation reliably and can cause skin irritation due to chafing. Short hair breeds may need the 3/8" microprobes offered as an accessory item, contact customer service for details. The optimal position for the collar receiver is on either side of the dog's windpipe. If the factory installed 5/8" contact points are not making good contact due to thick fur, see page 24 for changing contact point.

### IMPORTANT NOTICE

To prevent the occurrence of skin irritations the Collar Receiver should never be worn for more than 12 hours per day. Should your dog experience skin irritations from over exposure to the contact points remove the collar receiver unit immediately and stop using your e-collar until all skin irritations are completely healed. Antibiotic ointment will aid in the healing process. Some dog breeds have extra thick fur or extra short fur that requires special contact points. Please contact our customer service or visit [www.ecollar.com](http://www.ecollar.com) for more information.

## THE LCD DISPLAY DESCRIPTION



Blinking "1D" indicates the stimulation is ready for adjustment.

Solid "1D" indicates stimulation is "Locked"

Displays the Stimulation Level :

"0" means no stimulation and "HI" means the highest stimulation level(100 )

**Momentary / Continuous Button "M/C"**- M/C Button on the backside of the transmitter allows the user to easily switch between the three stimulation modes. Function of stimulation button changes by mode.

--> Combo Mode --> Momentary Mode --> Continuous Mode

Stimulation Button	Combo Mode	Momentary Mode	Continuous Mode
Display			
S (Black)	Momentary	Momentary	Continuous
S (Red)	Continuous	Momentary Booster	Continuous Booster
S(Black)+S(Red)	Momentary Booster	N/A	N/A
S(Red)+S(Black)	Continuous Booster	N/A	N/A
T	Tapping Sensation or Tone Stimulation		

# BUTTON FUNCTIONS

---

## **Momentary Stimulation**

Sends a single pulse of stimulation at the set level when you press stimulation button.

## **Continuous Stimulation**

Sends pulses of stimulation for as long as the button is pressed, timing out after 10 seconds (this is a safety feature designed to prevent accidental over-stimulation of your dog). The stimulation can be increased or decreased while the button is being pressed.

## **Tapping Sensation**

Vibration specifically designed to distract your dog, great for deaf dogs and stimulation sensitive dogs.

## **Tone followed by Stimulation (Pavlovian Conditioning)**

After 1.2 seconds of tone, the collar will administer continuous stimulation for as long as the button is pressed (up to 10 seconds). Release before 1.2 seconds for tone only.

---

## **Stimulation Button S (Black)**

- Sends momentary or continuous stimulation to the collar receiver based on the state of Momentary/Continuous Mode.

## **Stimulation Button S (Red)**

- Sends momentary or continuous boosted stimulation.
- If stimulation level is 10, boosted stimulation sends [10 + boost level]
- The default value of the boosted level is 5, it can be adjusted to any value between 1 and 60. Smaller and more sensitive breeds should use levels 1 through 20, larger and/or more stubborn breeds may need a higher boost.

## BUTTON FUNCTIONS

---

### **Boosting Stimulation in Combo Mode**

Momentary Boosting is accomplished by first sending a momentary stimulation pulse "S (Black)" to the dog and then pressing "S (Red)" button without releasing "S (Black)" button. (PLEASE PRACTICE)

Continuous Boosting is accomplished by first administering continuous stimulation "S (Red)" to the dog and then pressing the "S (Black)" button without releasing the "S (Red)" button.

### **Tapping Sensation (Vibration) / Tone Stimulation "T"**

Sends Tapping Sensation or Tone Stimulation to the collar receiver.  
(Default setting is tapping sensation).

To toggle between tapping sensation and tone stimulation, press "L" and "T" buttons simultaneously when the intensity level is "0".

- Single beep and "A" icon indicates Tone followed by Stimulation.
- Double beeps and "T" icon indicates Tapping Sensation (Vibration).

## **Tapping Sensation ↔ Pavlovian Stimulation**

### **Light Button "L" (ON/OFF Center Button on Back)**

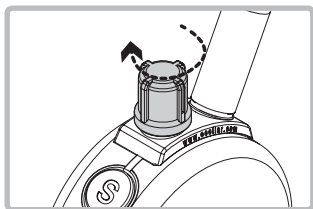
Pressing "L" button will change the night tracking light mode.

**OFF -> Flashing -> Solid -> OFF**

Great for locating your dog after dark. (PLEASE PRACTICE)

## HOW TO FIND THE PROPER STIMULATION LEVEL

---



Rotating clockwise increases the stimulation level, and rotating counter-clockwise lowers the stimulation level.

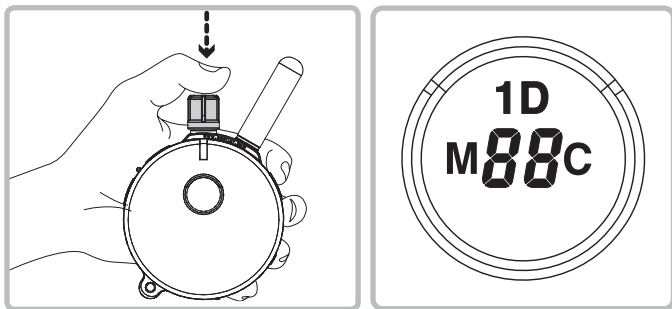
It is highly recommended that the user practices changing levels and modes before putting the collar receiver on a dog.

Setting the correct stimulation level for your dog is very important. To set your “conditioning” stimulation level, correctly put the collar receiver on your dog (see page 9 for instructions). Let the dog get used to the collar receiver for a couple of hours.

While watching your dog, turn the level to “0” and press the continuous stimulation button. Slowly turn the stimulation up at a rate of approximately 2-3 levels per second. When your dog first perceives the stimulation, usually between 5 and 20, release the button. This is your “conditioning” stimulation level. You may need to increase the “conditioning” level a few levels to get your dog to respond at first, some dogs are more stubborn and need more stimulation. The boosted level is typically 5 to 20 levels higher than the “conditioning” level.

## LOCK/UNLOCK THE STIMULATION LEVEL

---



### How to Lock/Unlock the Stimulation Level

Set the desired stimulation level and then press on the top of the stimulation dial until you see "1D" light up on the top portion of the LCD display. Flashing "1D" indicates unlocked stimulation and Solid "1D" indicates locked stimulation.

If the stimulation level does not change when you rotate the stimulation knob, you have successfully locked the stimulation level.

To unlock the stimulation level simply press the stimulation knob again and it will unlock the stimulation level.

## HOW TO SET THE BOOST

---

Boosted Stimulation adds the set boost level to the stimulation level, great for those situations when your dog does not respond to the “conditioning” level. Determining the Boosted stimulation level is a little more difficult than stimulation level setting due to the wide differences in temperaments and stimulation tolerance among the many breeds of dogs. On average, it is normally 5 to 20 levels higher than the “conditioning” level. It is important to have it set high enough to get the desired response from your dog.

1. Change the mode to Momentary Mode.  
(Press M/C button until “M” is displayed)
2. Change the intensity level to “0”.
3. Press S(Black) button for more than 5 seconds.
4. The intensity level will change from "0" to a flashing "1".
5. Rotate the dial to the desired boost level (1 to 60).
6. Press S(Black) button again to save and exit the boost level changing mode.



## LOST TRANSMITTER MODE

---

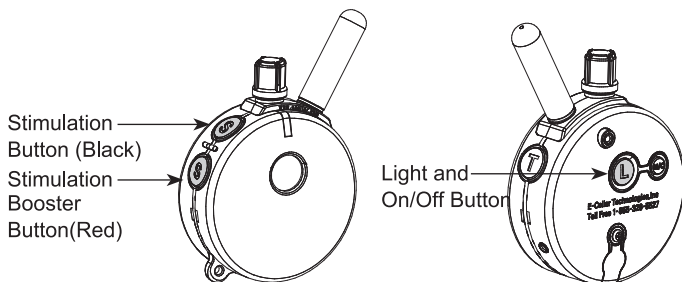
Your 800/802 or 1200/1202 E-Collar transmitter allows the user to activate a 6 hour timer.

After 6 hours, the transmitter will begin to beep providing the ability to locate the transmitter. The LCD displays “AL” during beeping.

Lost transmitter mode is activated by simultaneously pressing the Light (L) button and the stimulation button (Black “S”) when the intensity level is set to zero. Three short beeps will sound confirming the activation of the locator timer.

Lost transmitter mode is deactivated by simultaneously pressing the Light (L) button and the red stimulation button (Red “S”) when the intensity level is set to zero. Two short beeps will sound confirming the deactivation of the locator timer.

Lost transmitter mode will be cancelled whenever the transmitter is turned off. Make sure to reactivate lost transmitter mode when you turn off transmitter.



## REPLACE/ADD COLLAR

---

Occasionally, it is necessary to pair/sync a transmitter to a collar receiver, the following procedure will accomplish this:

1. Turn on the Transmitter
2. Turn intensity dial to "0"
3. Make sure the collar receiver is turned off.
4. Press collar receiver ON/OFF button for more than 5 seconds, green light on Receiver will flash rapidly
5. Immediately after, press and hold Black "S" Button followed by the Red "S" Button until you hear confirmation sound from Collar Receiver.

### HOW TO CHANGE THE TRANSMITTER TO A 2 DOG TRANSMITTER

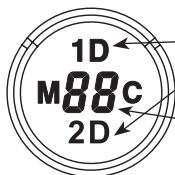
The button functions will change. The changes are described on pages 18 through 22. You can change the transmitter back to the 1Dog system (800/1200) at any time.

1. Turn on the Transmitter.
2. Press the Red "S" followed by the Black "S" followed by the "T" Button simultaneously for more than 2 seconds until you hear the confirmation beeps.
3. Repeat step 2 to return back to a 1 dog system.

### ADD/REPLACE COLLAR FOR SECOND DOG

1. Turn on the Transmitter
2. Turn intensity dial to "0"
3. Make sure Receiver is turned off.
4. Press collar receiver ON/OFF button for more than 5 seconds, green light on Receiver will flash rapidly.
5. Immediately after, press and hold Red "S" Button followed by the Black "S" Button until you hear confirmation sound from Collar Receiver.

## 802/1202 LCD DESCRIPTION



Blinking 1D or 2D icons indicates the stimulation level is ready for adjustment.

Solid icon indicates stimulation locked.

Displays the Stimulation Level : "0" means no stimulation and "HI" means the highest stimulation level(100)

**Momentary / Continuous Button "M/C"**- M/C Button on the backside of the transmitter allows the user to easily switch between two stimulation modes either momentary or continuous.

Button	Stimulation (1D or 2D)		TS(Vibration) or Tone Stimulation
M/C Button	Momentary Mode	Continuous Mode	N/A
Display			
S (Black)	Dog 1 Momentary	Dog 1 Continuous	Dog 1 TS (Vib) or Tone Stimulation
S (Black) + S (Red)	Dog 1 Momentary Booster	Dog 1 Continuous Booster	N/A
S (Red)	Dog 2 Momentary	Dog 2 Continuous	Dog 2 TS (Vib) or Tone Stimulation
S (Red) + S (Black)	Dog 2 Momentary Booster	Dog 2 Continuous Booster	N/A
L	"L" in Dog 1 set mode will control Dog 1 light "L" in Dog 2 set mode will control Dog 2 light		N/A

## 802/1202 BUTTON FUNCTIONS

### Mode Button "T"

Mode button allows the user to change modes as shown in the diagram



1 Dog Set Mode - LCD display shows 1D

2 Dog Set Mode - LCD display shows 2D

Tapping Sensation or Tone Stimulation- LCD displays a T

### Light Button(On Back) "L"

When the "L" button is pressed, "L" will be displayed.

If you press L while in Dog 1 Mode, Dog 1's Light will activate.

If you press L while in Dog 2 Mode, Dog 2's Light will activate.

Tracking Light will Cycle: Flashing -> Solid -> OFF when L is pressed.

### Tapping Sensation / Tone and Pavlovian Stimulation "T"

To toggle between tapping sensation and pavlovian stimulation press "L" and "T" buttons simultaneously for 2 seconds when the intensity level is "0".

- Single beep and "A" icon indicates pavlovian stimulation
- Two beeps and "T" icon indicates tapping sensation.

## 802/1202 BUTTON FUNCTIONS

---

### **Momentary stimulation**

Sends a single pulse of stimulation at the set level when you press the stimulation button.

### **Continuous stimulation**

Sends continuous pulses as long as the stimulation button is pressed, timing out after 10 seconds (this is a safety feature designed to prevent accidental over-stimulation of your dog). The stimulation can be increased or decreased while the button is being pressed.

### **Tapping Sensation**

Vibration specifically designed to distract your dog, great for deaf dogs and stimulation sensitive dogs.

### **Tone followed by Stimulation (Pavlovian Conditioning)**

After 1.2 seconds of tone, the collar will send continuous stimulation for as long as the button is pressed (up to 10 seconds).

### **Boosting Stimulation**

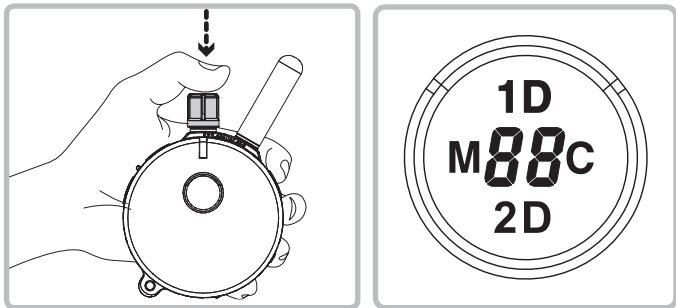
Sends boosted stimulation until you release buttons.

To boost **Dog 1**, press "S" (Black) button followed by "S" (Red) button

To boost **Dog 2**, press "S" (Red) button followed by "S" (Black) button

## HOW TO LOCK/UNLOCK THE STIMULATION LEVEL

---



### How to Lock/Unlock the Stimulation Level

See page 13 for help finding the proper stimulation level.

You can lock each dog to a different level.

In 1Dog Mode, if you see “1D” icon is blinking (unlocked)

Set the desired stimulation level and then press the stimulation dial until you see “1D” icon stop blinking.

In 2Dog Mode, if you see “2D” icon is blinking (unlocked)

Set the desired stimulation level and then press the stimulation dial until you see “2D” icon stop blinking.

If the stimulation level does not change when you rotate the stimulation dial, you have successfully locked the stimulation level.

To unlock the stimulation level simply press the stimulation knob again at 1Dog/2Dog mode and it will unlock the stimulation level.

## 802/1202 BOOST LEVEL SETUP

---

Boosted Stimulation adds the set boost level to the stimulation level, great for those situations when your dog does not respond to the “conditioning” level. Determining the Boosted stimulation level is a little more difficult than stimulation level setting due to the wide differences in temperaments and stimulation tolerance among the many breeds of dogs. On average, it is normally 5 to 20 levels higher than the “conditioning” level. It is important to have it set high enough to get the desired response from your dog.

### How to Setup Boost Level for first dog

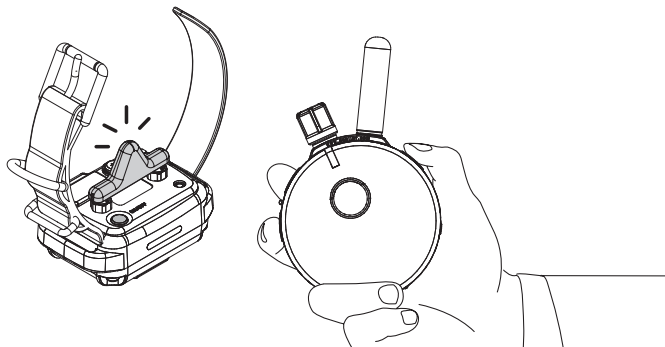
1. Change the mode to Momentary Mode  
(Press M/C button until “M” is displayed)
2. Change the intensity level to “0”
3. Press S(Black) button for more than 5 seconds
4. The intensity level will change 0 to 1 and start to blink.
5. Rotate the dial to change the boost level (up to 60).
6. Press S(Black) button again to save and exit from Boost Level Change Mode. If any other button is pressed or idle for 20 sec, Boost Level Change Mode will be cancelled.

If you want to change boost level for dog 2,

Press **S(Red)** instead of **S(black)** on step #3, and #6

## TESTING YOUR E-COLLAR

---



If you need to check your unit, hold the test light against the contact points on the collar receiver. This test will let you know that the collar receiver is generating the proper sensation to the dog, it should brighten in a smooth fashion as the dial is turned up.

Some people find it easier to hold the collar receiver in the palm of their hand and slowly turn the stimulation up using the continuous mode, typical human feel it between 8 and 25 depending on the dryness of their hands.

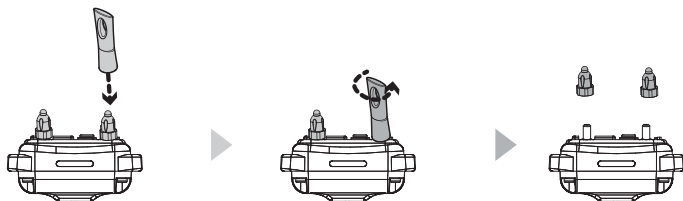
Feel free to contact us if you have need help, 1-855-326-5527.



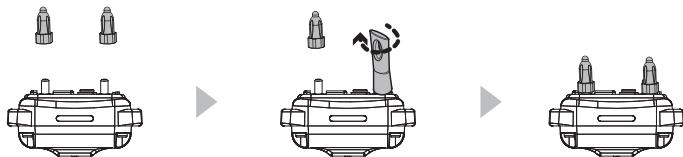
## REPLACING THE CONTACT POINTS

---

The standard 5/8" contact points are used for most dogs. Thicker fur breeds require the longer 3/4" contact points. Replace the 5/8" contact points by following the instructions below using the enclosed contact point tool.



1. Loosen both contact points by rotating the contact point counter-clockwise using the contact point tool.



2. Install the 3/4" contact points onto the bolt and tighten the contact points by rotating them clockwise with the contact point tool.

\* For short haired breeds such as boxers, dachshund, pit bulls, etc, and thick fur breeds please visit our website or contact us to inquire about special contact points for your dog.

**IMPORTANT TRAINING TIPS**

E-Collars can be used to reinforce commands your dog already knows or as a training tool when paired with leash pressure. It is not a replacement for basic leash obedience training, but a tool to allow you to better communicate with your dog. For best results, use the least amount of stimulation required to get the attention of your dog. A calm and consistent approach to training will always produce better long term results. It is highly recommended that aggressive dogs be taken to a professional trainer for evaluation before e-collar use. There are many different e-collar training techniques recommended by a variety of professional trainers. We believe you, the owner of the dog, can best determine the most successful technique for your dog. We recommend first time users to immerse themselves in learning about the proper techniques or seek a professional e-collar trainer. The technique used in the initial introduction of the e-collar is very important to the success of e-collar training. Search E-Collar Technologies on youtube and subscribe to our channel, new training videos are posted weekly. Also "Like" and subscribe to our Facebook page to receive more training advice and connect with other e-collar users.

**Good Luck with your training from your friends at  
E-Collar Technologies**

# TROUBLESHOOTING

---

## **? My Receiver / Transmitter is not turning on**

- A** Make sure the collar receiver is fully charged. Collar receiver light should turn green when fully charged while connected to the charger.

## **? My Receiver is not responding**

- A** Check Receiver's indicator light is blinking green and Transmitter LCD is on. Check to make sure the collar receiver's indicator light is red when the stimulation button is pressed.
- A** Try pairing/syncing the transmitter to the receiver. (Page 17)

## **? The receiver doesn't seem to provide stimulation to the dog**

- A** Remove Contact points from Receiver. Connect Test Light to the receiver and test for stimulation. If the test light is blinking, receiver is providing stimulation.

## **? Max range of device has been decreased**

- A** Check Transmitter's battery condition. Working range decreases when the battery level is low.  
Keep your fingers from touching the antenna. See the bottom of page 8 for the proper technique to maximize range.

## **? You cannot change the stimulation level for of the remote**

- A** Make sure 1D or 2D on transmitter LCD is blinking. If 1D or 2D icons are solid, you cannot change stimulation. You can unlock the stimulation at any time by pressing the stimulation knob for 1 second.

**CONTACT US FOR EXPERT HELP WITH YOUR E-COLLAR**

## TWO YEAR WARRANTY

---

To register your 800/802 or 1200/1202 product, please log onto our website at [www.ecollar.com](http://www.ecollar.com), click on the warranty registration link and fill out the required information. Please register your product within 30 days of your purchase. If you do not have access to a computer, please call our toll free number of 1-855-326-5527 and one of our customer service representatives will register your product for you. In the event the product is not properly registered proof of purchase is not required to obtain warranty, we will estimate your purchase date by the serial number. Misuse, improper maintenance, lost units are not covered by this warranty. Your complete satisfaction is our only concern.

The 800/802 or 1200/1202 Educator you have is our most recent design, it is different from the previous 800/1200 and 802/1202, so please let us know that you have the new Educator design when communicating with us.

**"Making Bad Dogs Good  
and Good Dogs Better!"**

## 28

# ACCESSORIES

---

- 3/8" Micro-Probes



- 50% Stimulation Reducer



- 3/4" Thick-Hair Probes



- Short Probe Comfort Adapter



- Car Charger



- Leather Belt Holster (specify Right or Left hand)



- Belt Clip



- Long Probe Comfort Adapter



**[www.ecollar.com](http://www.ecollar.com)**

## 29 ACCESSORIES

---

- Sew-On Holster



- 1" Quick Snap Nylon Collar (black or red)



- 1" Bungee Collar (24" or 30" length)



- Dummy Collar (specify Nylon or Biothane strap)



- Deluxe Hard Carry Case



- 1" MAX Probes



---

[www.ecollar.com](http://www.ecollar.com)

## SAFETY AND GENERAL INFORMATION

---

- The 800/802 or 1200/1202 Education Collar complies with all National and International Standards and Guidelines for human exposure to radio frequency electromagnetic energy.
- Nearly all electronic devices are susceptible to electromagnetic interference (EMI) if inadequately shielded or designed without precautions to EMI.
- 800/802 or 1200/1202 e-collar transmitters manufactured by E-Collar Technologies, Inc. comply with Article 15 of the FCC rules and operate under Part 95 of FCC regulations.

### 1. **IMPORTANT NOTICE**

To avoid Electromagnetic Interference and/or compatibility conflicts, please turn off your transmitter and collar receiver in any facility where posted notices instruct you to do so. Never use your equipment in close proximity of a Hospital or Health Care Facility or enter the facility without turning off both units.

2. An FCC license is not needed to operate 800/802 or 1200/1202 remote e-collar transmitters. However, any change or modification made to the transmitter, including the supplied antenna, without the expressed written approval of E-Collar Technologies, Inc. could void your authority to operate.

# TRAINING NOTES

---



# TRAINING NOTES

---



# E-Collar Technologies, Inc.

2120 Forrest Park Drive  
Garrett, IN 46738-1887

1-260-357-0051 (US & International)

1-855-326-5527 (US Toll Free)

1-855-226-5527 (US Toll Free Fax)

**sales@ecollar.com**  
**www.ecollar.com**  
**customerservice@ecollar.com**



*Thank you for Supporting American Workers*

Copyright 2015 E-Collar Technologies, Inc.

All Rights Reserved.

The device has been approved for use in EU countries and is therefore provided with the **CE mark**. All necessary documentation is available on the website: [www.electric-collars.com](http://www.electric-collars.com)  
Changes to technical parameters, properties and printing errors reserved.

**Service center and distribution**

Reedog, sro

Sedmidomky 459/8 101

00 Prague 10

Phone: +1 646 980 4569

Email: [info@electric-collars.eu](mailto:info@electric-collars.eu)