



Welcome to the World of
E-Collar Technologies, Inc.

BP-504
Owner's Manual

**“Happiness is a Well
Behaved Dog”**

Welcome to the World of E-Collar Technologies, Inc.



Barkless Pro BP-504

Congratulations on the recent purchase of your newly designed Barkless Pro BP-504 bark elimination E-Collar. We have incorporated various features to make the BP-504 the most humane E-Collar for reducing unwanted and excessive barking.

The 5-second safety delay feature is designed to prevent sensitive dogs from experiencing multiple stimulations due to vocalizing immediately after a prior activation. Additionally, the sensitivity of the sensor can be adjusted to suit your dog's specific barking behavior.

Our products are carefully designed and manufactured to meet strict quality standards, ensuring a safe experience for your beloved pet.

This guide is designed to provide you with assistance on the fundamental functions, programming features, and contents of BP-504. For further information and support, please visit www.ecollar.com or reach out to us at customerservice@ecollar.com.

We encourage you to contact our esteemed customer service department for any inquiries you may have at (260) 357-0051.

TABLE OF CONTENTS

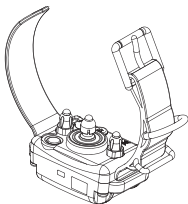
- Characteristics	03
- Components	04
- Getting Started	05
- Charging the Collar Unit	06
- Turning The Unit On/Off	07
- 5 Programming Mode	08
- LCD Display	09
- How to Program	10
- Bark Count Mode	11
- Stimulation Levels Setting Mode	12
- Sensor Sensitivity Mode	13
- Pavlovian Tone On/Off Mode	14
- Testing Your Barkless Collar	15
- How to Select the Correct Stimulation	16
- Indicator Light	17
- Correctly Fitting the Collar	18
- Understanding Contact Point Sensitivities	19
- How to Change the Contact Points	21
- One Year Warranty	22
- Safety and General Information	23
- Technical Specifications	24

CHARACTERISTICS

- 5 Second Safety Delay Between Stimulation Activations.
- 3 Stimulation Modes: Tone Only, 8 Levels and Auto Mode.
- 3 Levels of Adjustable Bark Sensitivity.
- Ability to Turn Pavlovian Tone Off (Great for tone superstitious dogs).
- LED Light to Indicate Battery Status.
- Employs 2 Hours Quick Charge Li-Po Battery.
- Adaptable to Various Size Dogs and Different Breeds.
- Advanced Vibration Sensor Technology eliminating false activations.
- Fully Waterproof and Shock Resistance.
- Constructed with Antibacterial Plastic.
- Short and Long (Low Nickel) Stainless Steel Contact Points.
- Proprietary ABST (Advanced Bark Suppression Technology).
- Bark Counter
- Sleep Mode (battery conservation)

COMPONENTS

- BP-504 Collar Unit with Collar Strap



- Owner's Manual



- Contact Point Removal Tool



- Lithium Polymer Charge Adaptor



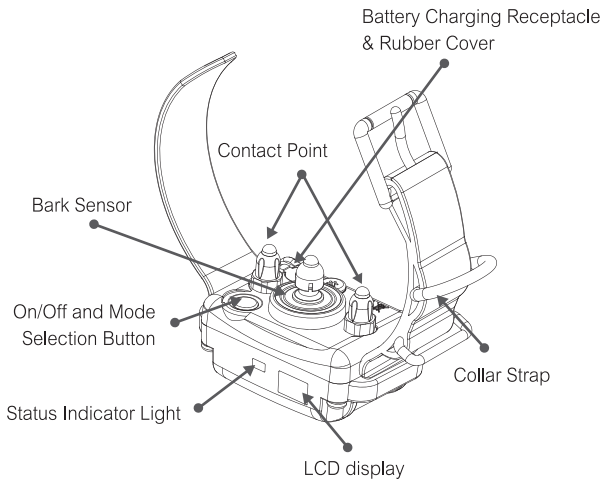
- Stainless Steel Contact Points



- Sensor Post for Long Contact Points



GETTING STARTED



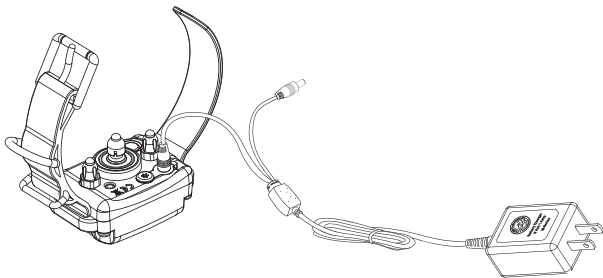
The BP-504 is outfitted with a waterproof control button which is used to turn the unit on and off, toggle through the five modes, and change the settings of the different modes.

CHARGING THE COLLAR UNIT

Indicator Light will blink “Green” under normal operation.

Solid “Red” when Stimulation is Applied to the Dog.

Blinking “Red” when Recharging is Required.



Indicator light will turn solid red during charge cycles and will turn green once it is fully charged. (approximately 2 hours)

Special Note about Battery Care

Your e-collar is equipped with Li-Polymer batteries that need specific attention to ensure their longevity. It is advisable to avoid fully discharging the battery. In the event of complete discharge, please recharge it promptly to prevent irreversible damage. Additionally, please keep the units away from excessive heat and cold temperatures.

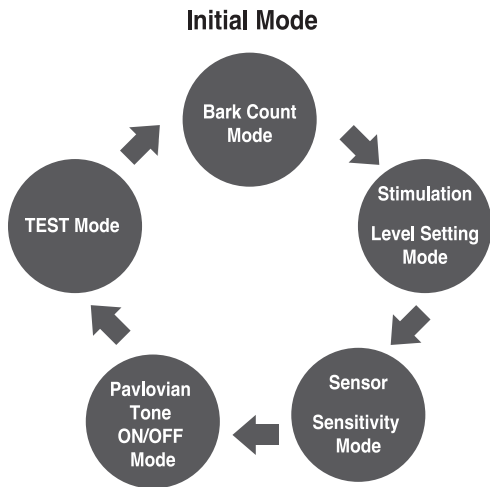
TURNING THE UNIT ON/OFF

To turn on the BP-504 simply press the control button for 0.25 seconds, a tone will sound and the bark count mode will be displayed.

To turn the BP-504 off simply hold the control button for 5 seconds, a tone will sound and the software version will be displayed.

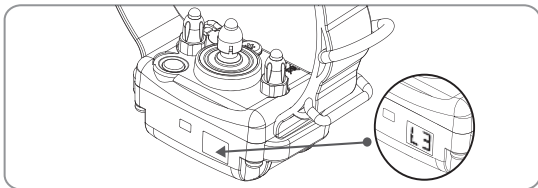
5 PROGRAMMING MODE

The BP-504 features 5 programming modes. The initial mode is the bark counter, pressing the control button will toggle through the modes as shown in the diagram below.



LCD DISPLAY

Mode	LCD Display	Mode
Count Mode	00~99	Number of Bark Activations
Stimulation Level Setting Mode	L 0	Tone Only
	L 1	Stimulation Level 1
	L 2	Stimulation Level 2
	L 3	Stimulation Level 3
	L 4	Stimulation Level 4
	L 5	Stimulation Level 5
	L 6	Stimulation Level 6
	L 7	Stimulation Level 7
	L 8	Stimulation Level 8
	L 9	Auto Mode
Sensor Sensitivity Mode	L	Low Sensitivity
	□ □	Medium Sensitivity
	H	High Sensitivity
Pavlovian	O	Pavlovian Tone On
Tone On/Off	F	Pavlovian Tone Off
Test Mode	▯ ▯	Activates test stimulation with current setting value



HOW TO PROGRAM THE BP-504

1. Cycling Through the Different Modes:

- Pressing the control button briefly will cycle through the five modes (Bark Counter, Stimulation Level Setting, Sensor Sensitivity, Pavlovian Tone ON/OFF Setting, and Test Mode).

2. Changing the Mode Settings:

- Display the mode you desire to change and press the control button for 2 seconds until the tone sounds and the display begins to blink.
- Once the unit is in the programming mode simply pressing the control button will cycle the unit through the available settings for that mode.
- To save the setting that is displayed simply press the control button for 2 seconds until the tone sounds and the display stops blinking.
- Inactivity for 10 seconds will also save the mode setting and return the unit to the bark count mode.

3. Normal Operating State:

- When the unit is on and not in programming mode the display will turn off and the battery indicator will continue to flash green or red if it needs to be charged. Pressing the control button will display the bark counter.

BARK COUNTER

The BP-504 defaults to the bark counter mode when turned on or is brought out of sleep mode. It is important to realize the bark counter will not count barks when the 5 second safety delay feature is activated. The bark counter is designed to count the number of stimulation activations not the total number of barks.

To reset the counter simply hold the control button for 2 seconds or until the display resets to zero.

STIMULATION MODES

The BarkLess Pro can be set to zero stimulation (L0) with tone on or off.

When set to zero and tone is off it will count barks which may be useful in testing the bark sensor. Remember it will wait five seconds after each count before it counts another bark.

Eight different stimulation levels are available to accommodate the varying sizes and temperaments of dogs. The levels are displayed as L1, L2, L3, L4, L5, L6, L7, and L8.

The “Auto Mode” is displayed as L9. In Auto Mode the unit will start at level 1 and increase one level for every 2 activations until it reaches level 8. When the dog stops barking for 10 seconds it will reset to level 1. This mode is useful for users that desire some protection barking but not nuisance barking. It is not recommended for small and/or sensitive dogs as the higher levels can be overwhelming.

SENSOR SENSITIVITY ADJUSTMENT

The BP-504 is outfitted with the ability to adjust the sensitivity of the bark sensor. Most dogs will work fine with the medium setting; however, some dogs with softer or whining barks may need to be set to high “H” to get reliable activations. Larger breeds with very loud barks or when the user wants to allow some softer barking the setting can be changed to the low “L” setting. You the owner are the best judge of what setting best suits your situation.

- To change the sensor sensitivity, press the control button for 2 seconds when the Sensor Sensitivity Mode is displayed.
The LCD display will start blinking and show the current setting.
- Press the control button to change the sensor sensitivity.
Sensor sensitivity will be switched from low, medium, and high in sequence.
- Once the desired setting is displayed, press the control button for 2 seconds to save the desired setting. The LCD display will stop blinking and return to the normal operating mode.

PAVLOVIAN TONE ON/OFF ADJUSTMENT

The BP-504 utilizes a tone prior to the stimulation commonly known as Pavlovian tone; it improves training and allows the dog to prepare for the stimulation making it a more humane experience. Some users may desire the stimulation to be at the instance of the bark and therefore will need to turn off the tone. Also, if your dog experiences “tone superstition” to other tones it may be best to turn it off.

- To change the setting from the defaulted ON position, simply toggle to the “O” and hold the control button for 2 seconds. The LCD display will start blinking and show the current setting of ON “O”.
- Press the control button to toggle to OFF “F”. The Pavlovian tone feature is now off.
- Once the desired setting is displayed, press the control button for 2 seconds to save the desired setting. The LCD display will stop blinking and return to the normal operating mode.

TESTING YOUR BARKLESS COLLAR

The BP-504 has a test mode which allows testing of the stimulation. The sensor can only be tested on a dog using the instructions provided.

- To test the stimulation the unit needs to be in test mode "T".

Pressing the control button for 2 seconds activates the stimulation for 3 seconds at the set level of stimulation with LED blinking red after one second of buzzing sound.

- To test the bark sensor the unit should be set to zero stimulation "L0" and the tone should be turned off "F". Put the unit on the dog and count the barks remembering that it will only register barks every 5 seconds. Remove the unit and look at the bark counter and make sensitivity adjustments accordingly.

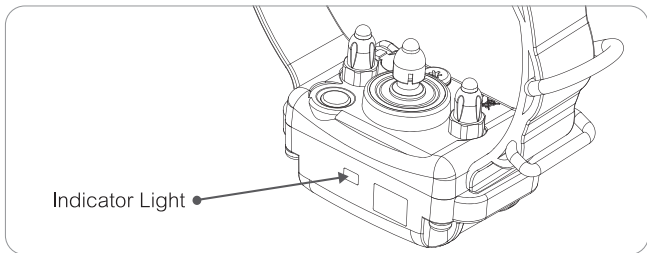
HOW TO SELECT THE CORRECT STIMULATION

The lower the stimulation level the better. Always start with level 1 and increase the level should your dog not respond appropriately. Your dog should not overly vocalize when administered the stimulation. He/she may twist their head as if a bee was buzzing them. Increase one level at a time to prevent over stimulating your dog. Some dogs respond to the tone mode after being conditioned with the stimulation. If you are close to your dog you should hear the tone immediately following your dog's bark followed by the corrective stimulation.

More stubborn barkers may need to have the level increased as they become accustomed to the sensation. You are the best judge of the correct level once the dog understands barking is not desired. Don't rush for change in behavior by turning it higher than necessary; remember this behavior has become a habit. It should be significant enough to communicate that barking when the collar is not acceptable.

For larger dogs that have been conditioned to the stimulation, the Auto Mode (L9) may be a good setting if protection barking is desired but nuisance barking is not.

INDICATOR LIGHT

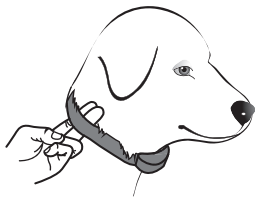


Once the unit is turned on the indicator light will flash green when the battery is charged. It will flash amber when it needs a charge within the next 24 hours and red when charging is required for continued operation. The BP-504 will go into a sleep mode if there is no programming or bark activity. In sleep mode the unit will still detect barks but will not show the battery life, simply pressing the control button will wake up the unit.

CORRECTLY FITTING THE COLLAR

The collar should be adjusted to allow the “contact points” to have direct contact with the skin. You should be able to fit a couple of fingers between the collar strap and your dog. Too tight poses the risk of skin irritation and discomfort. Too loose and the contact points will not be able to administer the stimulation reliably.

The optimal position for the collar receiver is on either side of the dog’s windpipe, directly on the windpipes works but may not be as comfortable for your dog. Dogs with thick fur will require some trimming to assure the contact points and bark sensor work properly.



UNDERSTANDING CONTACT POINT SENSITIVITIES

Many dogs have sensitivities to nickel found in stainless steel. Our standard contact points use a low nickel stainless steel which may cause irritation. Look for redness in the contact area which is a sign of sensitivity to the nickel in the contact points. If you are feeding your dog(s) from stainless steel bowls made in China or India please discontinue immediately. Switch to a stainless steel bowls made in Germany of the USA or to a different material such as glass, ceramic or stoneware. Contact us to obtain non nickel contact points known as hypoallergenic contact points; these can be made of a low gloss nickel free stainless steel or titanium.

To prevent the occurrence of skin irritations from pressure from the contact points the BarkLess Collar should never be worn for more than 2 hours per day at first and 10 hours maximum after your dog is conditioned to the contact points. Conditioning typically takes 4 to 8 weeks.

Should your dog experience skin irritations from over exposure to the contact points remove the collar receiver unit immediately and stop using your BarkLess Pro until all skin irritations are totally healed. Applying antibiotic ointment to the sore will aid in the healing process. Dog breeds with thick fur will require trimming the area where the collar box is positioned. In extreme situations we have more pointed thick hair contact points available, please contact customer service or www.ecollar.com for more information on our thick hair contact points.

UNDERSTANDING CONTACT POINT SENSITIVITIES

This product is specifically designed for canine use only.

E-Collar Technologies, Inc. assumes no responsibility for any misuse of this product, including damages caused by dog bites and lost items. Before using this product on aggressive dogs, it is advised to seek an evaluation by a professional trainer. It is not uncommon for aggressive dogs to associate the stimulation with the handler and potentially act against them. In some cases, dogs that are subjected to e-collar pressure during a fight may display redirected aggression and become even more aggressive.

Ensuring the well-being of your dog's health is essential before initiating the bark reduction training. It is highly recommended to begin with the lowest setting that produces a noticeable improvement in your dog's barking tendencies.

It is not advisable to utilize the BP-504 collar on dogs younger than 4 months. It is also recommended to limit the collar's usage to no more than 10 hours per day. During playtime with your dog, it is suggested to consider removing the collar.

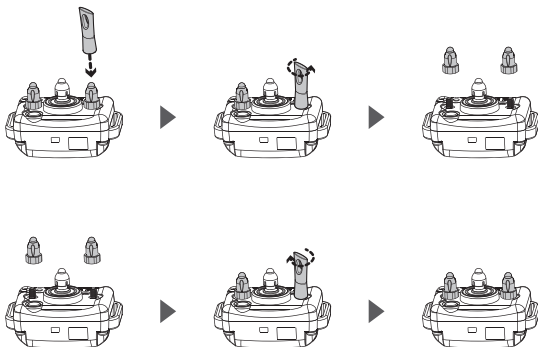
We strongly encourage you to closely observe your dog's response to the stimulation prior to leaving them unsupervised.

HOW TO CHANGE THE CONTACT POINTS

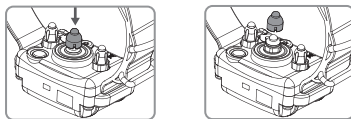
The standard 5/8" contact points are okay for most dogs.

Longer furs require the longer 3/4" contact points. Replace the 5/8" contact points by following the instructions below using the enclosed contact point tool.

1. Loosen both contact points by rotating the contact point using the enclosed contact point tool.



3. Snap on the sensor post cap to make sensor's tip level with longer contact points :



SAFETY AND GENERAL INFORMATION

- **NOTICE TO PREVENT WATER DAMAGE**

If Receiver is exposed to water on a regular basis, tighten screws once or twice a month depending on the frequency of water exposure. Please make sure screws are snug but not overly tight. This will help prevent internal water damage.

- **POSSIBLE ALLERGY NOTICE**

Dogs vary in sensitivity and may develop symptoms of a metal allergy. Which may include irritation, redness, hair loss, sores, etc.

Please rotate collar receiver from side to side daily to check for allergies.

If allergies occur, hypoallergenic contact points are available for purchase at www.ecollar.com or 260-357-0051

- **ITEM SHOULD BE PLACED OUT OF THE REACH OF CHILDREN**

This product is not meant to be used by individuals (including children) with limited physical, sensory, or cognitive abilities, or those lacking expertise and understanding, unless they are under the supervision or guidance of a person responsible for their safety. This also applies to the cleaning and upkeep of the item.

The item should exclusively be used with the power supply (charger) provided with the product.

ONE YEAR WARRANTY

To register your product, kindly visit our website at www.ecollar.com. Click on the warranty registration link and complete the necessary information. We kindly ask that you register your product within 30 days of your purchase. If you are unable to access a computer, please feel free to contact one of our dedicated customer service representatives at 1-260-357-0051. They will be happy to assist you in registering your product. If, for any reason, your product is not registered properly, proof of purchase will not be required to obtain warranty coverage. We will be able to estimate your purchase date based on the serial number. It is important to note that misuse, improper maintenance, lost or stolen units, and dog damages are not covered under the manufacturer's warranty. We strive for your complete satisfaction and aim to provide exceptional service.

SOCIAL MEDIA RESOURCES

Please like and subscribe to our Facebook page to stay up with new innovations.

Please subscribe to our youtube channel to watch videos on how to use your BP-504.

Search E-Collar Technologies to find us on the internet.

**“Making Bad Dogs Good
and Good Dogs Better!”**

TECHNICAL SPECIFICATIONS

Model	BP-504
Correction Modes	Tone , Static , Auto
Activation Mode	Adjustable Vibration Sensitivity
Correction Levels	8 Static - Auto - Tone Only
Degree of protection	IP68
Collar Receiverbattery (Li_Po)	300mAh
Battery voltage	3.7V ~ 4.2V
Charging voltage	5V
Time for battery fully charged	1-2 Hours
Collar Receiver Battery Life (Standby mode)	Battery last more then 1 week
Working temperature	0 ~ 55°C
Storage temperature / Humidity	-40 ~ 85 °C / 30%
"Risk of fire or explosion if the battery is replaced by an incorrect type" "Use an adapter that satisfies PS2 or LPS"	



E-Collar Technologies, Inc.

2120 Forrest Park Drive

Garrett, IN 46738-1887

1-260-357-0051 (US & International)

sales@ecollar.com

www.ecollar.com

customerservice@ecollar.com

© 2015 E-Collar Technologies, Inc.



Thank you for Supporting American Workers

The device has been approved for use in EU countries and is therefore provided with the **CE mark**. All necessary documentation is available on the website: www.electric-collars.com
Changes to technical parameters, properties and printing errors reserved.

Service center and distribution

Reedog, sro

Sedmidomky 459/8 101

00 Prague 10

Phone: +1 646 980 4569

Email: info@electric-collars.eu