

2 IN 1 PET TRIMER

**User Manual • Užívateľský manuál •
Užívateľský manuál • Használati utasítás •
Benutzerhandbuch**

Trimmer attachments

Types of trimmer attachments

Body trimmer attachment

Used for trimming most of the fur on your pet's body. Use it together with the guide combs to control hair length. For the first timers, the length guides makes it easy to give your pet an even trim, with no need for prior grooming experience.



Paw trimmer attachment

Great for use on pets with short hair, or on sensitive spots like the paws, posterior, or around the ears. Can also be used alongside the body trimmer attachment to achieve any style. Use it together with the guide combs to get the different hair lengths necessary for your desired style. Because the cutting edge is smaller, when used with length guides, it is safer and more convenient for first timers.



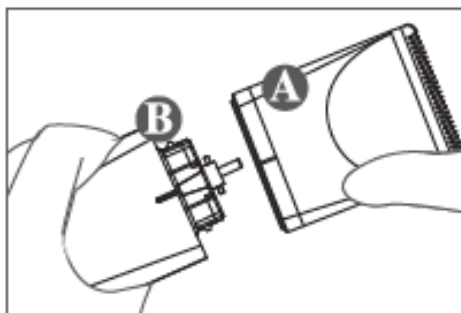
Attaching and detaching the trimmer heads

Attaching the trimmer head

Align the trimmer head A with trimmer body B; After aligning, press together firmly until you hear it click into place.

Detaching the trimmer head

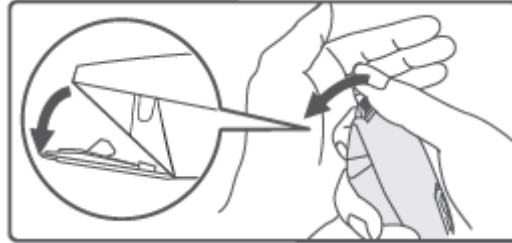
Pull trimmer head A apart from trimmer body B.



Attaching and detaching the body trimmer head

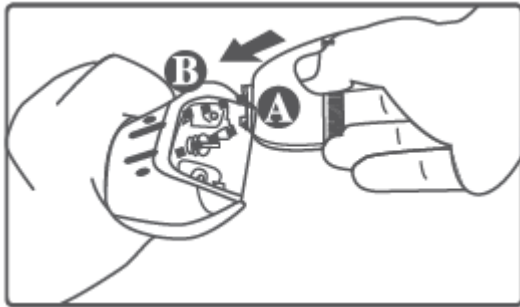
Detaching the body trimmer head

To detach, turn off the device and use thumb to press upward against the teeth of the body trimmer head, in the direction shown in the illustration.

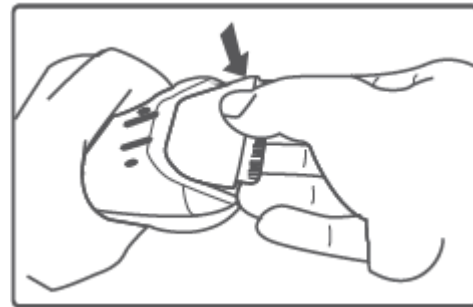


To avoid letting the trimmer head fall to the floor and become damaged when detaching, make sure you have a good grip on the trimmer head.

Attaching the body trimmer head



Attach location A on the trimmer head to location B on the trimmer body;



When in place, press firmly on the back of the trimmer head until you hear it click in place.

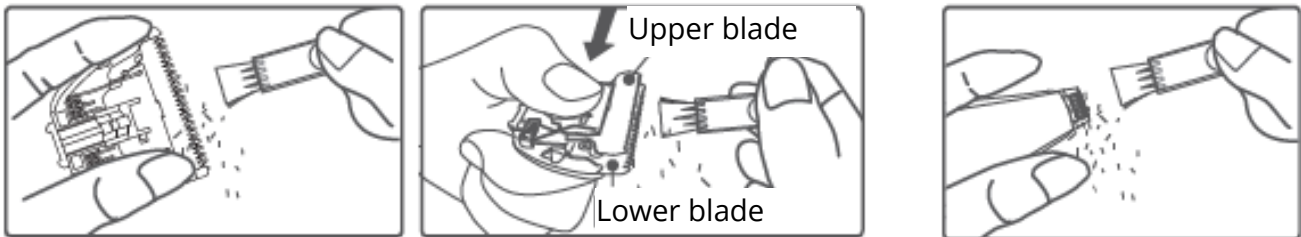
Note:

The white ceramic plate can break easily. When attaching or detaching, take care not to damage this part. If the ceramic plate is damaged, it may result in jamming or loss of functionality, and the trimmer head will need to be replaced.

Cleaning and maintaining trimmer attachments

Removable body trimmer attachment 1

Other attachments 2



Use the cleaning brush to brush out hair and debris off of the trimmer body (applies to all attachments)

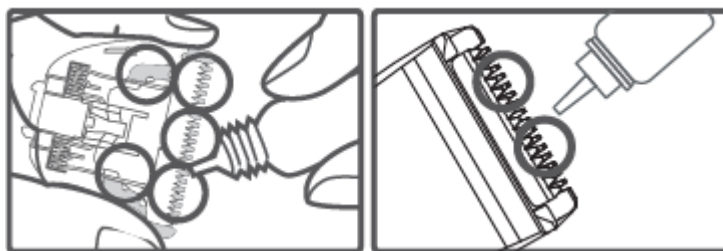
You can clean out hair from between the teeth of the body trimmer head with the cleaning brush. If you press the clipper blade back and forth along its direction of motion, you can clean the spaces in between the teeth, removing any debris with the brush.

Note:

Do not remove the spring beneath the trimmer head, otherwise it cannot be fixed and will have to be discarded. You should clean the debris and hair from the surface and teeth of the trimmer blades after each use to avoid dulling the blades. If you clean using water, make sure to wipe it dry afterward to prevent corrosion. Please add oil after each cleaning for maintenance.

Oiling the trimmer head

Add a bit of oil in between each tooth on the trimmer blade. Because the clipping action of the trimmer blade is very fast, please be sure to use the appropriate oil. Never use lubricating grease or any mixed oils that contain kerosene or other solvents.



Note:

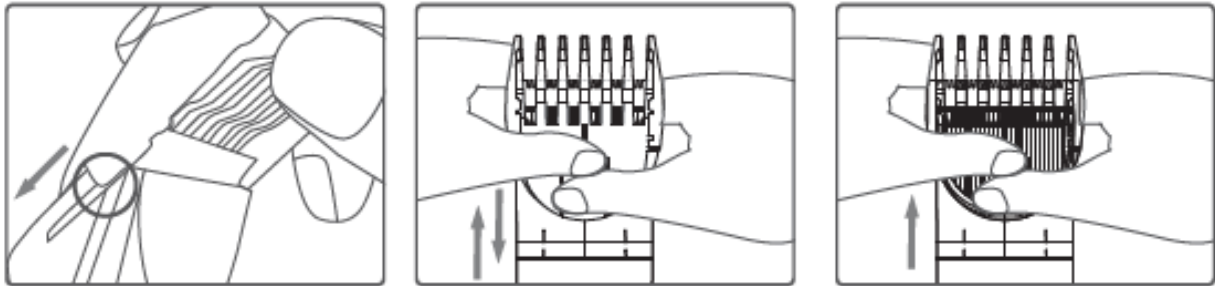
The lifetime of the trimmer head is directly related to the frequency of use, the type of pet hair being trimmed, and the maintenance of the product. Replace trimmer head whenever they become worn out. This will help avoid hair jams. When replacing, please consult our agents and one of our service stations. Please do not use incompatible trimmer heads from other manufacturers. In the process of using the trimmer head, it may become slightly hot. This is normal and does not prevent it from functioning normally.

Guide combs

Use the guide combs to ensure an even length trim. The guides can help you avoid mistakes when trimming, resulting in trimming your pet's hair too short. They are also effective at controlling the overall length of your pet's hair to achieve any desired hair style.

Attaching and detaching the guide combs

1 Body trimmer head: 3/6mm, 9/12mm guide combs.

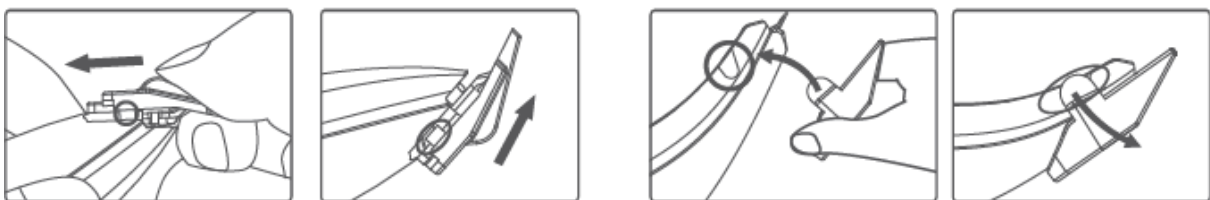


How to attach: Line the guide comb up with the groove on each side of the trimmer attachment and slide it along the groove until you hear it click into place.

How to adjust: For the two guide combs for the body trimmer (3/6mm, 9/12mm), after attaching use both thumbs to press down on top of the guide comb, then slide up or down to adjust the length.

How to detach: Grasp the trimmer head with both hands and press down on the top of the guide comb with both thumbs, then slide it forward and off. Please be careful not to press down too hard on the teeth of the guide comb to avoid damaging them.

2 Paw trimmer: 2mm guide comb



How to attach: Line the guide comb up with the groove on each side of the trimmer attachment and slide it along the groove until you hear it click into place.

How to detach: Grasp the trimmer head with both hands and press down on the top of the guide comb with both thumbs, then slide it forward and off. Please be careful not to press down too hard on the teeth of the guide comb to avoid damaging them.

- Before using the trimmer, it is best to first wash your pet's hair, blow it dry, then comb it out thoroughly, making sure to cut out any clumps in the fur.
- If your pet's hair is dirty, or if anything is caught in your pet's hair, it can reduce the lifetime of the trimmer head.

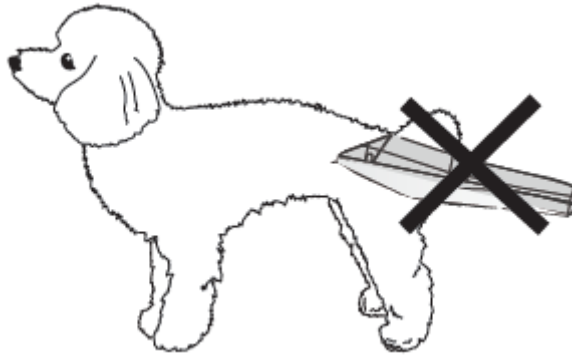
How to trim your pet's hair

Using the guide combs

According to the type of hair being trimmed, choose an appropriate guide comb. To trim your pet's hair, firmly grasp the trimmer with the trimmer head facing up. Lightly place the flat of trimmer head on the area to be trimmed and proceed to trim against the direction of hair growth, slowly and steadily passing over area to be trimmed.

Not using the guide combs

Anyone not using the guide combs when using this trimmer should have prior grooming experience. When trimming your pet's hair slid the back of the electric trimmer along the fur, adjusting to trim to the desire length. (If you trim your pet's hair without using the guide comb, the trimmed hair will be around 1mm in length. Close to a complete shave.)

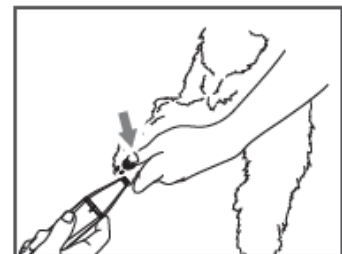
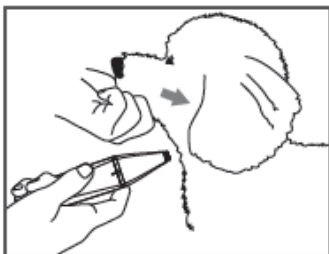


If you point the trimming head down toward your pet when trimming, it may result in trimming the hair shorter than intended or damaging your pet's skin.

When trimming, make sure your pet's hair is dry, If your pet's hair is overly wet it will make trimming more difficult and dull the trimming blade. When trimming, never press the trimming head into your pet's skin. This will damage the skin.

How to trim in different locations on your pet

Using the paw trimmer attachment, you can trim the area around the ears on smaller breeds, the posterior and the paws.



Cleaning the body of the trimmer

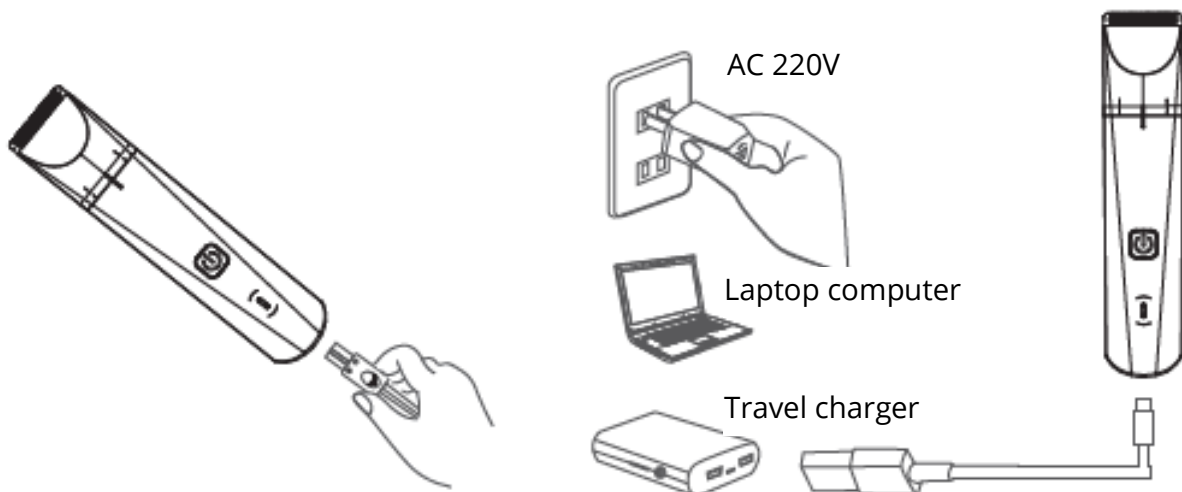


Use the cleaning brush to brush out hair and debris off of the trimmer body, the trimmer blade, and the attachment grooves. You can use water to clean the trimmer body. After cleaning use a dry cloth to dry off the device, then add oil to the trimmer head before storing.

Please do not use gasoline, alcohol, thinner or any other corrosive chemicals to clean the device.

Please do not disassemble or attempt to repair this product. If the device needs to be repaired, please contact a service centre.

Attaching the charging cable/ Charging the trimmer



Take the USB charging cable and attach it to the trimmer body. Friendly reminder: After buying, please charge the device before using! If using a non-standard 5V charger, the current must be 1A. Otherwise, do not use it to charge the device.

Make sure the device is turned off. Plug the USB charging cable into a power source. (The USB charging cable can be plugged into any USB charging port, phone charger, desktop computer, laptop computer, or travel charger.)

This product uses a rechargeable battery. If the device cannot be repaired and must be discarded, you must remove the battery before discarding. When removing the battery, you must turn off the power. The battery should be recycled at a safe recycling facility.

Indication light information

Indication light	Status
Constant white light	Device is working/battery full
Blinking red light	Low battery/charging

Note

- If your hands are wet, do not plug in or unplug the power cord, or you may get shocked.
- Make sure not to pull forcefully on the power adapter, or it may leak electricity, short circuit, or catch fire. To avoid accidents, if the power adapter is already broken, please stop using it and replace it.
- This product is not a toy, nor are its attachments and accessories. To avoid unnecessary risks, please store the attachments and accessories in a place where children do not have access to them.
- If you discover any irregularities with the power adapter cord, you should immediately cease using the adapter cord. Otherwise it may leak electricity, short circuit or catch fire.
- This product should only be used to trim pet hair. Please do not use this product for anything else. To avoid injuries due to jams, do not use this device to trim hair that has been recently permed or dyed, or hair that is still wet.
- Please use the provided power adapter to charge the device. To avoid accidents, this product's adapter cord should not be used for other models.

Product Description

Basic Parameters

Product Name:	PETKIT 2 IN 1 PET TRIMMER
Battery type:	Ni-MH battery 600mah
Use time:	Around 1.5 hours
Rater power:	DC 5V 1A
Charge time:	around 5 hours
Regulatory standards:	GB 4706.1 GB 4706.9
Weight (together with trimmer body)	Body trimmer attachment: 120g Paw trimmer attachment: 114.4 g
Dimensions:	Body trimmer attachment: 155.5mm*36.5mm*27mm Paw trimmer attachment: 165.4mm*32.2mm*28.8mm
Accessories:	Guide comb (2 for the body trimmer attachment, 1 for the paw trimmer attachment), USB data cable, fur comb, oil container, user manual

Technological Characteristics

Safe Trimmer Head

Specialized trimmer head. Specialized R shaped, rounded edge where the blade contacts with the pet hair that won't scratch the skin.

Full body washable

You can clean the entire device using water, making trimming cleaner and more sanitary.

2 interchangeable trimmer head

Comes with a body trimmer head and a paw trimmer head to meet the needs for trimming any area on your pet.

Low noise, low vibration

Low noise motor that is quite and comfortable.

Detachable trimmer head

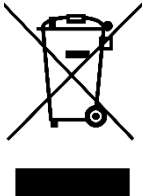
Detachable trimmer head design makes cleaning out hair and debris simple and easy (body trimmer head only).

Guide comb assistance

Comes with multiple guide combs, making it simple to trim pet hair of any type or length.

WEEE

This product must not be disposed of as normal household waste in accordance with the EU Directive on Waste Electrical and Electronic Equipment (WEEE - 2012/19 / EU). Instead, it shall be returned to the place of purchase or handed over to a public collection point for the recyclable waste. By ensuring this product is disposed of correctly, you will help prevent potential negative consequences for the environment and human health, which could otherwise be caused by inappropriate waste handling of this product. Contact your local authority or the nearest collection point for further details. Improper disposal of this type of waste may result in fines in accordance with national regulations.



The device has been approved for use in EU countries and is therefore provided with the **CE mark**. All necessary documentation is available on the website: www.electric-collars.com
Changes to technical parameters, properties and printing errors reserved.

Service center and distribution

Reedog, sro

Sedmidomky 459/8 101

00 Prague 10

Phone: +1 646 980 4569

Email: info@electric-collars.eu