

1600ft Remote Training Collar

MANUAL BEFORE BEGINING

Please read the user manual carefully before use. If the product you got is not suitable or damaged, please contact us immediately. We will give you a satisfactory reply.



1. Make sure the remote and receiver are full charged before using for the first time
2. Please use vibration or tone mode first. Shock mode is only recommended in emergency situation and not advised as a form of positive behavior training.
3. Start at the lowest level of shock mode then slowly turn to the next level until the dog has a response. And if your dog becomes uncomfortable, please stop using immediately.
4. Please check the skin condition of dog's when wearing the receiver collar. If there is any skin injury, please stop using immediately until the dog recovers.
5. Please don't keep receiver collar on dogs for more than 4 hours at a time.
6. Contact points are made of silicone; most dogs can wear it comfortably. If some dogs are allergic to silicone or feel uncomfortable with collar, please stop using it and consult a veterinarian.

Note: This product is only suitable for training and is banned for animal abuse.

Content

Warning.....	2
Package List.....	4
Usage Instruction.....	5
Main Functions.....	5
Functions Instruction.....	6
Remote Range.....	6
Outdoor Waterproof.....	6
Static Shock.....	7
Vibration & Beep.....	8
Sleep Mode.....	8
Button Definition.....	9
LCD Screen.....	9
Turning up & off and Indicator.....	10
Product Synchronizing.....	11
Fit the collar.....	13
Charging & Battery.....	14
Charging	14
Battery.....	14
Trouble Shooting.....	15

Package List



Remote



Contact Points



Wrist Strap



Test Light



Data Line



Receiver

Collar

This package list is for one-day system only.



Contact Points



Receiver

Collar

If you buy two-dog system, these fittings will be added.

Usage Instruction

Main Functions



Static Shock: 16 adjustable intensity levels



Vibration: 16 adjustable intensity levels



Beep: tone warning



Waterproof: IP67 full waterproof receiver collar



Safe Screen-lock: Avoid pressing buttons by accident



Fast Charging: 2-hour full charging

Functions Instruction

Remote Range

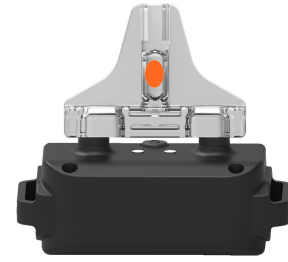
- This item uses 433MHz frequency to send and receive signals, the theoretical range is up to 1600ft.
- The distance is used in most dog training environments such as indoor, courtyard, parks, streets and so on.
- The received signal distance may be shortened due to interference from the environment, weather, and obstacles.
- When the remote sends a signal, you should hold it to protect it from obstacles. If you use it inside or under your pocket, it will also affect the distance.

Outdoor Waterproof

- This receiver collar achieves IP67 waterproof performance
- Safe for dog to wear during rain and fog
- Safe to be immersed in water up to 1 meter deep
- Do not immerse in water for more than one hour

Static Shock

- Before using for the first time, you can use the test bulb to test whether the current is normal.



- Different dogs have different resistance values. You can gradually use the equipment when you start to use it to find the appropriate electric shock level for your dog.

- For initial use, select the minimum current for the pet to adapt and watch his reaction. If any adverse reactions occur, please stop immediately.

- The current range of this product is divided into 1-16 levels, which is suitable for all kinds of education and punishment environment. The recommended usage values of 1-16 levels are as follow.

- The use of static shock of this product is limited to proper education, and all non-standard use and abuse of pets are strictly prohibited.

Level 1-3	It can be used for warning
Level 4-6	It can be used for punishment
Level 7-10	It can be punishment and deterrence
Level 11-16	It can be used to stop the current behavior in an emergency

(Different volumes of dogs or breeds have different reactions. The above are recommended methods for reference only)

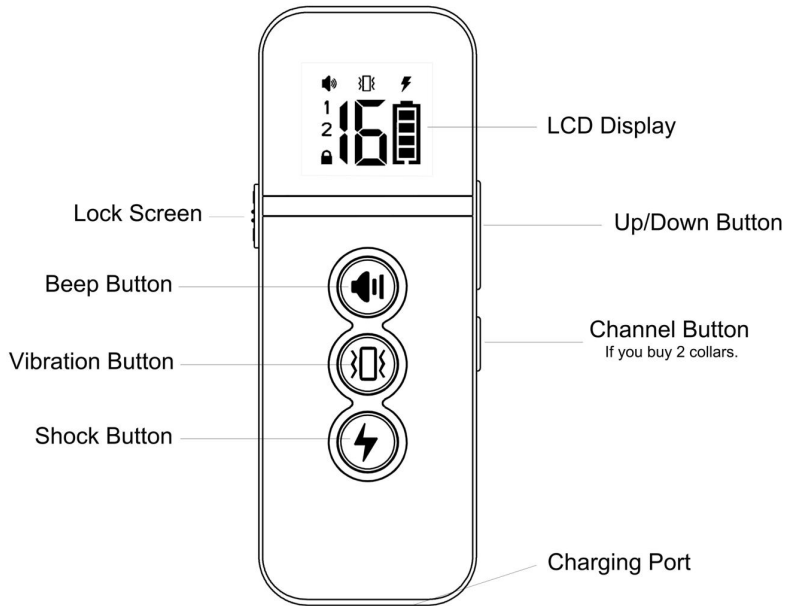
Vibration & Beep

- Before using the static shock, you can use the sound and vibration first, which allows the dog to form a conditioned reflex, and stops the current wrong behavior before feeling the vibration or sound. It is the safest method of training.
- You can combine reward training to train your dog to make a series of actions after feeling vibration or sound.
- The gear for vibration is divided into 1-16 files, and the intensity of the sound is not adjustable.

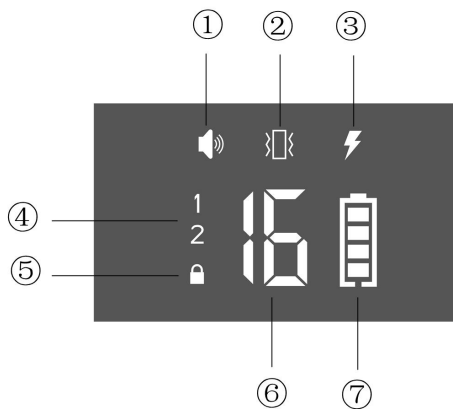
Sleep Mode

- Sleep mode normally used for dogs short breaks, or when sleeping, no manual shutdown is required. After no operation for 30 seconds, it enters sleep mode and maintains extremely low power consumption.
- Just pressing any button on the remote, can be wake it up. When you launch a command signal by remote, you can wake up the receiver

Button Definitions




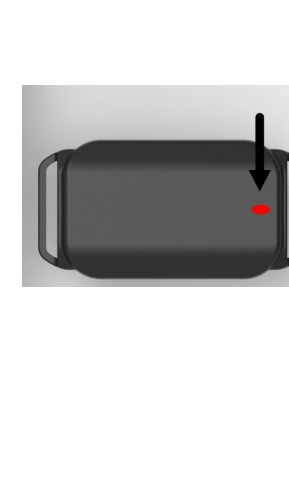


LCD Screen



- ① Beep mode
- ② Vibration mode
- ③ Shock mode
- ④ Show receivers in using
(If keeping 2 receivers)
- ⑤ Screen-lock state
- ⑥ Intensity level
- ⑦ Power state of remote

Turning up & off and Indicator

	<p>Screen-lock button:</p> <p>Push down to unlock buttons.</p> <p>Push up to lock buttons and turn it off, and any other buttons can't activate remote.</p>
	<p>Turning on/off receiver:</p> <p>ON: The receiver vibrates and is accompanied by a sound.</p> <p>OFF: Press power button, it will make a long beep.</p>
	<p>Operation Indicator:</p> <p>The green indicator lights up and keeps flashing every 2 seconds that when receiver turned on and entering working state.</p> <p>During synchronizing state, it will flickering alternately red and green.</p>
	<p>Power Indicator:</p> <p>Less than 20% power, The red LED Light will flashing.</p> <p>When receiver charging, The red LED Light will keeps on and turns green when it's fully charged.</p>

Product Synchronizing

This product works by radio channel. Only do remote transmitter and receiver keep on the same channel, they can work synchronously . Before delivery, we will complete synchronizing. If remote lost contact with receiver because of signal interrupt and power outage, please synchronize by hand.

How to manually pair the receiver and remote when they lost contact

Step 1: Turn on the Remote

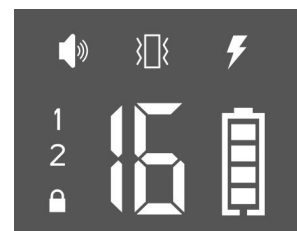
Press the any button to turn on the Remote.
Please unlock the remote first, If the remote is locked.



Step 2: Choose dog channel.



(1)



(2)

Set 1/2 button on remote, select **1** or **2** on LCD screen. It means receiver will be controlled by channel 1 or 2. (see picture 1 and picture 2)

Step 3: Turn on the receiver

Press the power button to turn on the receiver (see Picture 3), and the LED indicator on the receiver will flash (see Picture 4)



(3)



(4)

Step 4: Remote receiver signal to complete synchronizing.

Press the power button and hold for 3 seconds, the LED indicator on the receiver will flickering alternately red and green (see picture 5).

The receiver is ready for pairing, then press the vibration and Beep button at the same time, and a beep from receiver means synchronizing finishes. Now please start to enjoy your dog training collar.



(5)



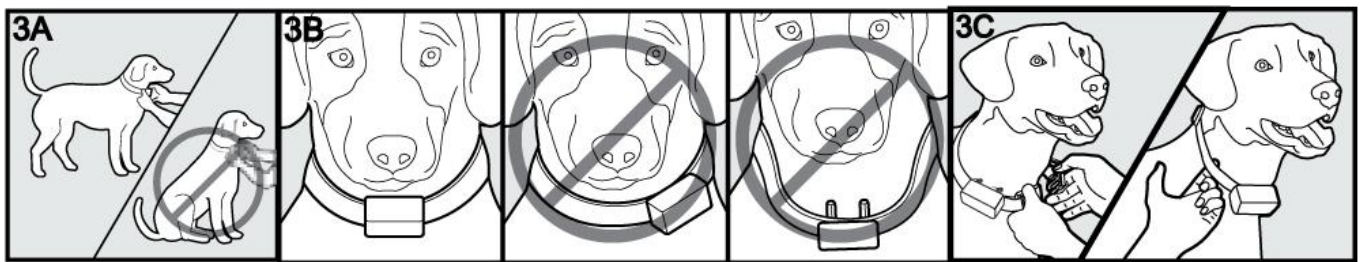
Press the vibration and Beep button at the same time to complete synchronizing.

(6)

PS: If you buy 2-dog system, you can pair the two collars on channel 1 and channel 2 separately. Follow step 1 to synchronize two receivers separately. You can use 1/2 button on the remote to control different dogs separately.

Fit the collar

1. Make sure your pet is standing comfortably to fit it correctly(3A).
2. Place receiver collar on the middle of your pet's neck and avoid it being loose(3B).



3. Adjust the most comfortable collar length to your dog, do not too loose or too tight. It should be left 2 fingers between the collar and dog's neck(3C).
4. Please check whether contact points touch dog's neck. If dog's fur is too long, please change longer contact points or trim the fur, otherwise, shock won't work (because fur is a nonconductor.)
5. The receiver is ABS plastic and compound rubber, please prevent dog from biting.
6. Contact points are made of silicone and most dogs can wear it comfortably. If some dogs are allergic to silicone or feel uncomfortable with collar, please stop to use it and consult a veterinarian.

Charging & Battery

Charging

1. Please do not use an adapter larger than 5V2A to charge the product.
2. You can also charge the product through the USB port of your car, laptop, desktop computer or power bank.
3. When the receiver is low on power, the indicator light on the receiver turns red, please charge it as soon as possible.
4. Please unplug the power supply as soon as possible after full charge to avoid long-term charging.
5. Do not expose the power cord to rain or snow, and do not trample or squeeze it to avoid damage.
6. The charging time is about 2 hours.



Battery

1. Do not leave the product in excessive temperature for a long time. When the battery is in an environment exceeding 60 degrees Celsius for a long time, it is possible to explode and cause danger to life.
2. When the device shows low power, charge it as soon as possible. Do not recharge before the battery is run out.
3. After full charge, please remove the power supply as soon as possible to avoid prolonged charging.
4. When the battery is damaged, do not repair or disassemble it.

Trouble Shooting

<p>My pet does not respond when I press a button.</p>	<ul style="list-style-type: none"> •Make sure the Receiver Collar has been turned on. •Check if you are currently in a paired channel, press the 1/2 button to select the channel you want to control. •If both channels cannot be controlled, check whether they are currently in a matching state. You can manually rematch them. For details, see Pairing and Hibernation – Pairing.
<p>Why the remote range can't reach actual distance?</p>	<ul style="list-style-type: none"> •The current environment may have obstacles that affect the signal distance. •Signal interference may exist in the current environment.
<p>How to know if the shock works or not?</p>	<ul style="list-style-type: none"> •When the transmitter and receiver are working, it will light up. •You can use the test light to test if it works.
<p>What if dogs have no response for the shock?</p>	<ul style="list-style-type: none"> •Try to increase the level of the electric shock. •Check that the wear is correctly, the two contacts are positive and negative, and it is necessary to touch the dog's skin at the same time. •Depending on the length of the dog's hair, it is possible to increase the length of the contacts or to remove some of the dog hair. •Insufficient current from the receiver or transmitter can also affect the shock function.

YBS234

MADE IN CHINA

The device has been approved for use in EU countries and is therefore provided with the **CE mark**. All necessary documentation is available on the website: www.electric-collars.com
Changes to technical parameters, properties and printing errors reserved.

Service center and distribution

Reedog, sro

Sedmidomky 459/8 101

00 Prague 10

Phone: +1 646 980 4569

Email: info@electric-collars.eu