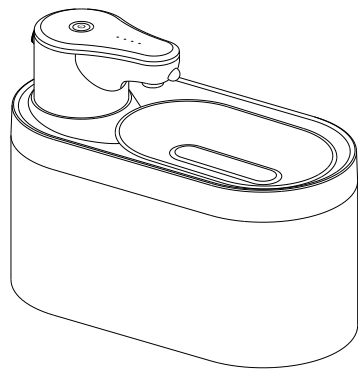


材质:157克铜版纸  
风琴折页  
单页尺寸: 130X90mm

Automatic Pet Water Fountain  
User Manual



Model: WF08

0.3.0.02.WF08XX-00-01

Safety Precautions

- Dispose of all packaging materials properly. Keep the poly bags away from children and pets as these bags could cause suffocation.
- Do NOT allow children to play with, in or around the pet water fountain.
- To avoid injury, please keep close supervision when the appliance is used near children.
- Do NOT use the water fountain with pets not able to reach the water tray or with any physical disability.
- Do NOT place any foreign object in the water tank.
- Do NOT disassemble the pet fountain other than components as instructed in this User Manual.
- Do NOT use the pet fountain for anything other than its intended use.
- Only use attachments recommended or sold by the manufacturer. The use of attachments not recommended or sold by the manufacturer may cause an unsafe condition. This product is only suitable for DC output 5V --- 1A power adapter, please use the power adapter that meets the relevant national and regional standards, otherwise this product will be damaged or cause safety hazards. Do NOT modify the pet fountain.
- Do NOT operate any appliance if the unit is malfunctioning or has been damaged. Do not attempt repairs on the device yourself. Contact our customer service immediately for further instructions.
- Be sure to disconnect the power supply for safety when the appliance is not in use.
- Please disconnect the power supply before maintaining and cleaning the machine.

01

- This product is for indoor use only.
- This product is not allowed to run without water.
- Never pull the electrical power cord to remove the plug from the wall outlet.
- If the plug of this device gets wet, turn off the electricity of that wall outlet. Do NOT attempt to unplug.
- Check the device after installation. Do NOT plug in if there is water on the contact points or plug.
- To avoid tripping, always position the power cord out of the way of foot traffic.
- Do not use the appliance in the bathroom.
- Change the filter every 2 weeks or when the flow rate has noticeable reduced. For two or more cats, you may need to replace the filters more regularly if it becomes blocked.

Caution

- Do NOT allow pets to chew on or swallow any parts.
- Keep it level and do not knock over the product, otherwise it will cause malfunction or water spilled.
- Do not put this product in the dishwasher for cleaning.
- Do NOT install or store the pet water fountain where it will be exposed to weather or temperatures below 0°C / 40°F.
- Read and observe all important notices listed on the pet water fountain and in the packaging.

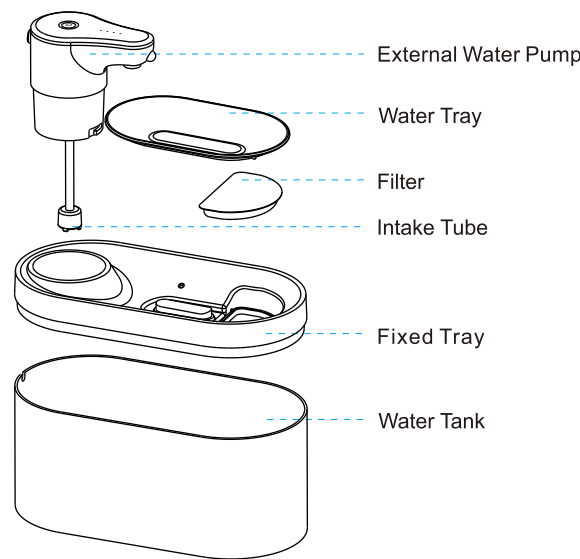
Specifications

Product Name: Automatic Pet Water Fountain  
Model: WF08  
Dimensions: 10.23\*5.12\*7.56inch

02

Capacity: 2.5 L  
Material: ABS  
Rated voltage: 5V --- 1A  
Rated power: 0.5W  
Suggested pet types: cats and small and medium-sized dogs

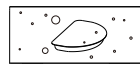
Product Diagram



03

How to Use

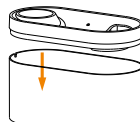
- ※ Please following the steps for initial use.
1. Soak the filter in clean bowl for 5 minutes with 5-50°C water.
- ※ It is normal for the water soaked in the filter element to appear colorless or yellow, but it is not drinkable.



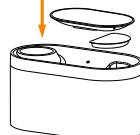
2. Rinse the drinking water tray, filter tray and tank with clean water.
- ※ It is strictly forbidden to put this product and its assembly parts in the dishwasher for cleaning, and Do not soak the External water pump in water.



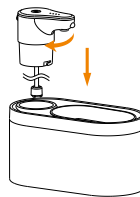
3. Fill the water Tank with clean and hygienic drinking water, assemble the Filter Tray.



4. Assemble the Filter and the Fixed Tray.



5. Insert the External water pump into the Fixed Tray and twist to the left.



04

6. Place the assembled water dispenser on a stable ground.
- Note: Keep the water level between the Min and Max level. The pump will fail if it runs dry.



How to Clean

The water dispenser needs to be cleaned once about 3 days in operation, and the filter element should be replaced once about 2 weeks. The parts of the water dispenser are not allowed to be cleaned in the dishwasher.

When the filter element indicator blinks twice, please replace the filter element in time. After the replacement, double-click the switch button, the indicator will return to normal, and the timer will be reset. The new filter element needs to be soaked in water for about 5 minutes before it can be used.

Instructions

Switch Button:  
Long press to power off, Short press to switch modes.

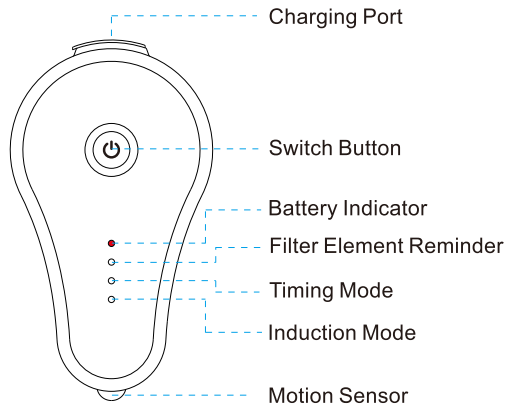
Battery Indicator:  
Fully charged white light is always on, low battery red light flashing. Charging red light and white light flash alternately.

Filter Element Reminder:  
The lamp is not on when it does not need to be replaced. When you need to replace it, the indicator blinks twice. Double click the switch button to reset the filter element reminder.

Timing Mode:  
Automatically dispense water once every 30 minutes

05

Induction mode:  
when the sensor detects a pet, the machine will automatically discharge water.



06

FC CE RoHS  
Made in China

The device has been approved for use in EU countries and is therefore provided with the **CE mark**. All necessary documentation is available on the website: [www.electric-collars.com](http://www.electric-collars.com)  
Changes to technical parameters, properties and printing errors reserved.

**Service center and distribution**

Reedog, sro

Sedmidomky 459/8 101

00 Prague 10

Phone: +1 646 980 4569

Email: [info@electric-collars.eu](mailto:info@electric-collars.eu)