

Thank you for choosing the Anti Bark Collar

You and your dog deserve a companionship that includes memorable moments and a shared understanding together.

Our mission is to ensure your dog's safety by providing you the tools and techniques to successfully train your dog. Should you have any queries, please contact our customer service.

⚠️ WARNING (Not for aggressive dogs)

Do not use this product if your dog is aggressive, or if your dog is prone to aggressive behavior.

Aggressive dogs can cause severe injury and even death to their owner and others.

If you are unsure whether this product is appropriate for your dog, please consult your veterinarian or certified trainer.

⚠️ CAUTION (Risk of skin damage)

Please read and follow the instructions in this manual. Proper fit of the collar is important because a loose collar may cause inconsistent performance.

A collar worn for too long or made too tight on the dog's neck may cause skin damage, ranging from redness to pressure ulcers (commonly known as bed sores).

These collars can cause pressure necrosis if used incorrectly and is often misidentified as burns.

Avoid leaving the collar on the dog for more than 12 hours per day.

If possible, reposition the collar on the pet's neck every 1 to 2 hours.

Check the fit to prevent excessive pressure, and it is okay to trim any excess strap length.

Never connect a lead to the electronic collar, because it may cause excessive pressure on the contacts.

Examine the contact area daily for signs of a rash or a sore.

Wash the dog's neck area and the contacts of the collar weekly with a damp cloth.

If a rash or sore is found, discontinue use of the collar until the skin has healed.

If the condition persists beyond 48 hours, see your veterinarian.

These steps will help your dog safe and comfortable. Millions of dogs are comfortable while they wear stainless steel contacts. Some dogs are sensitive to contact pressure. You may find after some time that your dog is very tolerant of the collar. If so, you may relax some of these precautions. It is important to continue daily checks of the contact area. If redness or sores are found, discontinue use until the skin has fully healed.

How the anti bark collar works?

The anti bark collar is reliable, effective, and comfortable for large or small dogs.

The anti bark collar will work automatic when the dog barking. The dog will receive an annoying but safe, harmless simulation. With correct, consistent use of this product, the dog will associate his misbehavior with your corrections, and soon enough, you will have a well-trained dog.

This particular model features adjustable levels of simulation enabling the user to tweak accordingly to the dog's temperament, removing the risk of over simulation.

⚠️ Note:

If the anti bark collar don't work for a long time, you should charge it fully before keeping it idle, and charging it every one month.

Table of Contents

- Main Features 4
- Overview 5
- Understanding your anti bark collar 6
 - 1. Charging the battery 6
 - 2. Test the anti bark collar Function 7
 - 3. Collar Fitting 9
 - 4. The LED Indicator 10
- Frequently Asked Questions 10
- Troubleshooting Guide 11
- Common size of different dogs 12
- Common weight of different dogs 12

Main Features

- Waterproof
- Ergonomic Slim Receiver Design
- Enhanced Contact Points
- For Dogs as Small as 10lbs
- Charge for 2 hours

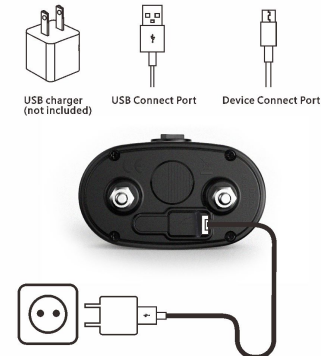
Overview



Understanding Your Anti Bark Collar

1. Charging the battery

Found any USB charger in your home, and then connect with USB Port and Device Port to charging the anti bark for 2 hours



User Operating Guide

Please read this guide thoroughly before operating the Training Dog Device

2. Test the Anti Bark Collar Function

Turn the anti bark by turning ON-OFF & Intensity Dial and set to Level 5.

The Level 1 will vibrate only when the anti bark work. Usually this level is for small dogs

The Levels 2-5 will vibrate first and then follow by electrical simulation when the anti bark work, level 2 is lowest of vibrate and electrostatic pulse and level 5 is highest.



Set the Sensitivity to 4 Level by press the Sensitivity Button

- 1 "Beep" = Level 1 2 "Beep" = Level 2
- 3 "Beep" = Level 3 1 "Long Beep" = Level 4

Found the test light tool and put it over the Contact Points of the Anti Bark Collar

Test by scratching the rough surface of the test tool on the anti bark using a fingernail or pen. The anti bark will emit a vibration for 1.5 seconds. And then the test light should lash orange indicating electrostatic pulse simulation is work correctly



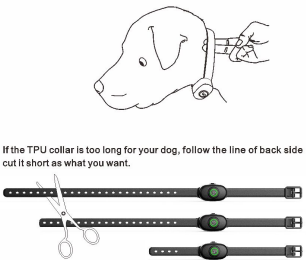
If the anti bark keeps activates for 5 times, it will enter into auto-protection mode. The LED indicator will be blinking for 1 minute. And then it turns off which means the anti bark goes to sleep mode.

3. Collar Fitting

The collar receiver should be fitted so that the contact points press firmly against the dog's skin. When properly fitted, you should be able to fit a finger or two snugly in between the contact points and your dog's skin.

When properly fitted, the collar receiver should not move on the dog. The best location for the collar receiver box is either side of the dog's windpipe.

A loose fit can allow the collar receiver to move around on the dog's neck. When this happens, the contact points may rub the skin and cause irritation. If the collar receiver is too tight, the dogs may have difficulty breathing.



4. The LED Indicator



The LED Indicator shows up when the anti bark works or the battery is fully charged.

It will blink in standby within 10 seconds or into auto-protection mode 1 minute.

It will blink breath light when the anti bark charging.

It always quick blink when the battery power low. That means you need recharging for anti bark. (Standby is 10 seconds blink 7 times)

Frequently Asked Questions

1. Is the training dog device suitable for all dogs?

The collar is adjustable from length 7.9" (20cm) to 21.6" (55cm), if your dog's neck circumference is smaller than 7.9", you will be forced to retread the collar, if your dog's neck circumference is larger than 21.6", this collar may not be suitable for the dog. This Collar is not suitable for the dogs under 15lbs.
2. Can I attach a leash to the Collar Receiver?

NO. This can result in pulling the Contact Points too tightly against your dog's neck. Attach a leash to a separate, nonmetallic collar or harness. Ensure the extra collar does not put pressure on the Contact Points.

Troubleshooting Guide

1. My dog is not reacting to the anti bark collar.

Make sure the anti bark collar is turned on.

Be sure the strap is on the dog light enough so that both contact points are touching the dog's skin.

The contact points may be too short for your dog's thick or long coat. If you are already using longer contact points, you may need to trim the hair on the dog neck, so that both contact points are touching the dog's skin.

The intensity level may be too low for dog. Increase the intensity until the dog responds, usually by a neck movement, head shaking, or looking over the shoulders. The response may be very subtle.
2. I want to test anti bark collar myself, but it does not work.

When testing the anti bark by your hands, please touch the two electrodes simultaneously, as touching one electrode will not work.
3. LED Indicator light comes on, but I do not feel any simulation.

Your tolerance may be higher than your dog's. You may need to try the unit on your fingertips where sensitivity is higher and/or increase the simulation level. Be sure both contact points are touching both of your fingertips.

The battery may be low, check the LED indicator light on the anti bark collar for battery life.

If you have a full charge, and you have done all of the above, your unit may need to be serviced

If your dog was in salt-water, be sure to rinse the anti bark and charging port with clean water.

Common size of different dogs

Size	Neck (cm)	Chest Measurement (cm)	Bark Length (cm)	Type
Mini	20-22	25-30	19	Chihuahua, Yorkshire Terrier
Small	20-24	29-36	23	Chihuahua, Yorkshire Terrier, Poodle, Pomeranian
Medium	23-28	35-42	28	Maltese Dog, Shih Tzu
Large	27-31	41-47	31	Miniature Schnauzer, Pekingese
Large	30-34	46-53	35	Schnauzer, English Cocker Spaniel
Large	33-37	52-59	40	Beagle
Huge	43-48	76-84	60	Husky
	47-52	88-97	65	Labrador Retriever
	52-62	92-100	70	Golden Retriever, Old English Sheepdog

Common weight of dogs

- Large Dog (Body height above 61cm, Weight above 40kg)
- Medium Dog (Height 40.7-61cm, Weight 11-30kg)
- Small Dog (Height 25.5-40.7cm, Weight 4-10kg)
- Mini Dog (height under 25cm, Weight under 4kg)



Battery: 3.7V 300ma LIP
Made in China

The device has been approved for use in EU countries and is therefore provided with the **CE mark**. All necessary documentation is available on the website: www.electric-collars.com
Changes to technical parameters, properties and printing errors reserved.

Service center and distribution

Reedog, sro

Sedmidomky 459/8 101

00 Prague 10

Phone: +1 646 980 4569

Email: info@electric-collars.eu