

www.petoneer.com



Fresco Mini Pro
User Manual

迷你宠物饮水机Pro
使用说明书

Model / 型号: WF001

Please read this manual carefully before using.
Keep the manual in a safe place for future reference.
使用产品前请仔细阅读本使用说明书并妥善保管

01 / Inside the box



Fountain*1



Filter*1

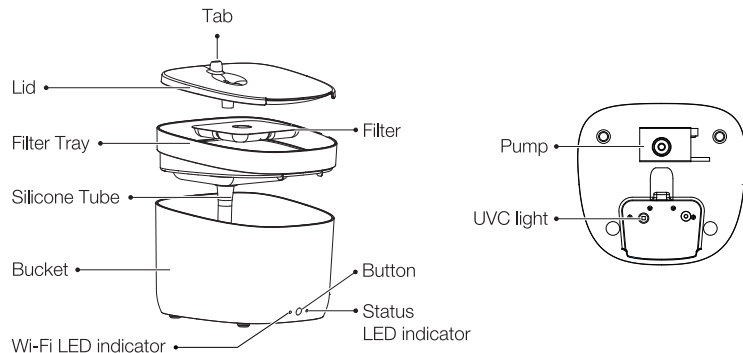


Foam*1



Manual*1

02 / Meet Your Smart Fountain

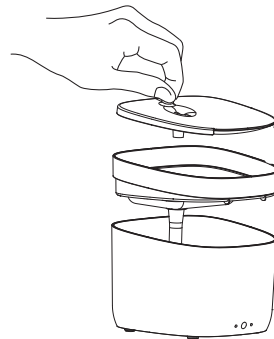


03 / Operations

① Clean up

Clean the inside of the bucket, the lid and the filter tray. Please clean the shell with a dry cloth.

After rinsing the filter, soak it in clean water for 5 minutes!

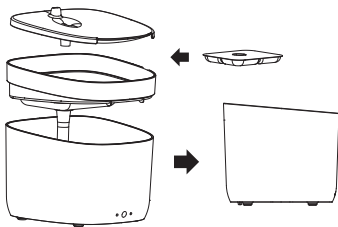


② Fill up

Pour water into the bucket. Do not exceed the max water level.

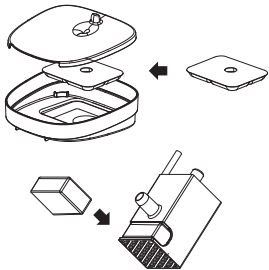
③ Assemble

Please put all parts in the right places according to the illustration;



⑤ Accessories replacing

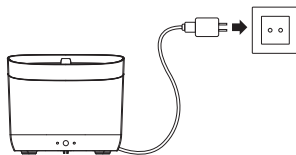
It is recommended to replace the filter, foam every 30 days.



④ Power on

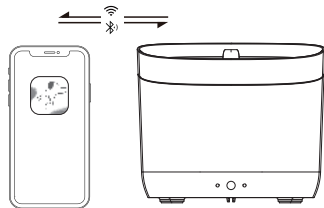
Connect the cable to the power adaptor, then plug it into to the wall outlet.

*The adaptor (USB 5V 1A) is not included; please find a spare one!



⑥ Connect the fountain

Download the Petoneer app and connect the fountain to your Wi-Fi to monitor and control.



04 / Quick Setup

1. Scan the QR code on the right and download the Petoneer App which is available on App Store and Google Play. Click Sign up to get walked through to create your Petoneer account.



2. Power on and ensure the Wi-Fi Indicator LED is blinking fast reflecting the device is ready for joining the Wi-Fi.

Open the Petoneer App and click the '+' button and get walked through the SET-UP steps.

Notice:

- 1) The fountain doesn't support the 5GHz Wi-Fi, please make sure your Wi-Fi is 2.4G.
- 2) If the Wi-Fi indicator is not blinking fast after power-on, please long press and hold the manual feed button until the indicator blinks quickly.

05 / Status Indicator Explained

Status Indicator LED	Meaning
Status LED steady on	Low Water
Status LED blinking in red	Filter Expired
Wi-Fi LED steady on	Connected
Wi-Fi LED flashing fast	Disconnected

06 / Specifications

Description: Fresco Mini Pro	Material: ABS	Communication: Wi-Fi(2.4GHz)
Model No.: WF001	Net Weight: 580g	Input Voltage: DC 5V 1A
Dimension: 174*181*154mm	Capacity: 1.9L	

07 / Precautions

1. Please use it in the indoor environment;
2. DO DISCONNECT the power supply when cleaning. To clean the bucket, do not directly wash the outside of the bucket; when cleaning the whole unit, please clean the shell with a dry cloth.

3. Do not look directly at the UVC light while it is working.
4. After a period of UVC beaming, the yellowing inside the fountain is normal.
5. Please place the unit on the flat ground to prevent accidental overturning, causing the fountain to sprinkle or not work correctly.
6. Please shield or organize the power cord well to prevent the pet from biting the cable and causing dangerous situations such as electric shock;
7. Low water reminder does not work if the fountain is not working. When there is water by default and the fountain is working, it will alert when water is detected low.
8. This fountain is suitable for cats or small and medium-size dogs;

08 / Warranty Terms

Within the period of warranty, if the product fails with no fault of user operations, it will be repaired at Petoneer's expense. The warranty will not cover product failure in examples below:

- 1). Intentional damage to the product by the user or third party
- 2). Failure to operate or maintain the product following the (QIG) Quick Installation Guide Instructions.
- 3). Failure by natural wear and tear including but not limited to scratching, corrosion, oxidation and rusting.
- 4). Failure by non-authorized repair of the product including but not limited to user's own or third-party repairing attempts or modifications.
(All Pictures shown in the manual are for illustration purpose only.
Actual product may vary due to product enhancement.)

Note:

This product and after-sales service are only available in China (excluding Hong Kong, Macau and Taiwan).

This warranty is only applicable to China (excluding Hong Kong, Macau and Taiwan).

FCC Note:

This device complies with part 15 of the FCC Rules. Operation is subject to the following two conditions:

- (1) This device may not cause harmful interference, and
- (2) this device must accept any interference received, including interference that may cause undesired operation.

Note: The Grantee is not responsible for any changes or modifications not expressly approved by the party responsible for compliance. Such modifications could void the user's authority to operate the equipment.

Note: This equipment has been tested and found to comply with the limits for a Class B digital device, pursuant to part 15 of the FCC Rules. These limits are designed to provide reasonable protection against harmful interference in a residential installation. This equipment generates, uses and can radiate radio frequency energy and, if not installed and used in accordance with the instructions, may cause harmful interference to radio communications.

However, there is no guarantee that interference will not occur in a particular installation. If this equipment does cause harmful interference to radio or television reception, which can be determined by turning the equipment off and on, the user is encouraged to try to correct the interference by one or more of the following measures:

- Reorient or relocate the receiving antenna.
- Increase the separation between the equipment and receiver.
- Connect the equipment into an outlet on a circuit different from that to which the receiver is connected.
- Consult the dealer or an experienced radio/TV technician for help.

Warning: Changes or modifications not expressly approved by the party responsible for compliance could void the user's authority to operate the product.

FCC Radiation Exposure Statement:

The equipment complies with FCC Radiation exposure limits set forth for uncontrolled environment.

This equipment should be installed and operated with minimum distance 20cm between the radiator and your body.

Environmental Conditions

Operating Temperature: 32 °F to 104 °F, (0 °C to 40 °C) (indoor only)

SkyRC Technology Co., Ltd. declares that this Fresco Mini Pro(WF001), is in compliance with the essential requirements and other relevant provisions of the Radio Equipment Directive (2014/53/EU).

Environment friendly disposal

You can help protect the environment!

Please remember to respect your local regulations: dispose of nonfunctional electrical equipment with an appropriate waste disposal center.

**Manufacturer: SkyRC Technology Co., Ltd.**

You can help protect the environment!

Please remember to respect your local regulations: dispose of nonfunctional electrical equipment with an appropriate waste disposal center.

Read all the instructions:

When using electrical appliances, basic safety precautions should always be followed, including the following:

1. Do not touch hot surfaces. Use handles.
2. To protect against electric shock do not immerse cord, plug into water or other liquid.
3. Close supervision is necessary when any appliance is used by or near children.
4. Unplug from outlet when not in use and before cleaning. Allow to cool before putting on or taking off parts, and before cleaning the appliance.
5. Do not operate any appliance with a damaged cord or plug, should the appliance malfunction, or if it has been damaged in any manner. Return appliance to the nearest authorized service facility for examination, repair or adjustment.
6. The use of the accessory attachments is not recommended by the appliance manufacturer as it may cause injuries.
7. Do not use outdoors.
8. Do not let the cord hang over edge of table or counter, or touch hot surfaces.
9. Do not place on or near a hot gas or electric burner, or in a heated oven.
10. Always attach plug to appliance first, then plug cord in the wall outlet.
11. Do not use the appliance for other than intended use.
12. WARNING: Never leave the appliance unattended whilst in use.
13. Warning: keep the supply cord away from heating tip and metal enclosure while using.
14. This appliance is not intended for use by persons (including children) with reduced physical, sensory or mental capabilities, or lack of experience and knowledge, unless they have been given supervision or instructions concerning use of the appliance by a person responsible for their safety.

15. Children should be supervised to ensure that they do not play with the appliance.

16. If the SUPPLY CORD is damaged, it must be replaced by the manufacturer, its service agent or similarly qualified persons in order to avoid a hazard.

17. WARNING: This tool must be placed on its stand when not in use.

SAVE THESE INSTRUCTIONS.

Manufacturer: SkyRC Technology Co., Ltd.

Address: Floors 4, 5, & 8, Building 4, Meitai Technology Park, Guanguang South Road, Guanlan, Longhua District, Shenzhen, China

The device has been approved for use in EU countries and is therefore provided with the **CE mark**. All necessary documentation is available on the website: www.electric-collars.com
Changes to technical parameters, properties and printing errors reserved.

Service center and distribution

Reedog, sro

Sedmidomky 459/8 101

00 Prague 10

Phone: +1 646 980 4569

Email: info@electric-collars.eu