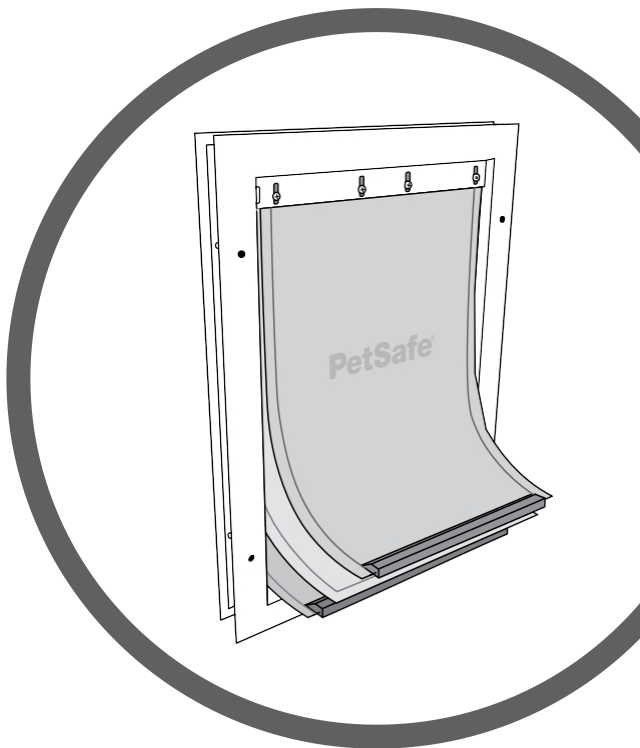




Instructions for use

Aluminium doors for extreme weather for pets™



Please read this instruction manual thoroughly before using it for the first time.

Welcome to

You and your pet were made for each other. Our goal is to help you have the best time together. Your new pet door is designed to protect your home from extreme temperatures while allowing your pet to come and go as they please. We know that keeping pets safe makes for happy owners. Before you begin, please read the important safety information. If you have any questions, please feel free to contact us.

In addition, Radio Systems Corporation and any other affiliate or brand of Radio Systems Corporation may be referred to collectively as "we" or "us."

Important safety information

Explanation of words and symbols used in this manual



This is a safety alert symbol. It is used to warn of potential risks of personal injury. Observe all safety information following this symbol to prevent possible injury or death.

⚠ WARNING

WARNING indicates a hazardous situation which, if avoided, could result in death or serious injury.

⚠ CAUTION

WARNING, used with the safety alert symbol, indicates a dangerous situation which, if avoided, could lead to minor or moderate injury.

NOTICE

WARNING is used to address procedures not related to the injury.

⚠ WARNING

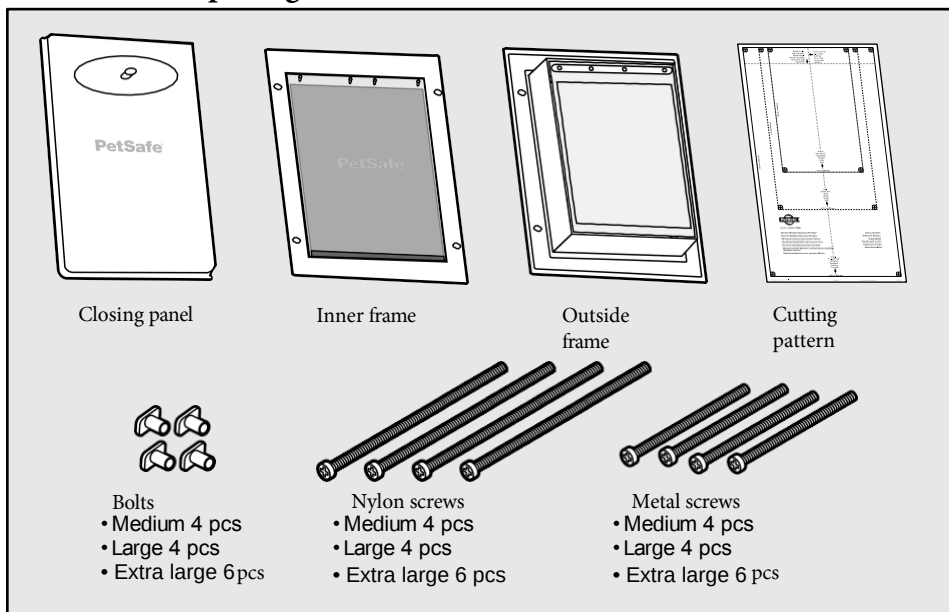
- If there are children in the household, it is important to consider the children when fitting the door. A pet door can also be used by children, allowing them access to hazards that may be on the other side of the door. Pool owners should ensure that children are monitored at all times and that the pool has adequate barriers to entry. If there is a potential hazard inside or outside your home that can be accessed through the door, Radio Systems Corporation recommends that you properly block access to the hazard or remove the pet door. A closing panel or lock, if used, is provided for aesthetic or energy efficiency reasons and is not used as a safety device. Radio Systems Corporation will not be held responsible for inadvertent use and the owner of this product accepts full responsibility for supervising the opening
- To avoid the risk of serious injury, follow all safety instructions for power tools and wear safety glasses during installation.
- Prior to installation, the user must be familiar with all installation regulations that may affect the installation of the pet door and work with a licensed contractor to determine its suitability for the installation. These pet doors are not fire rated. It is important that the owner and the opposing party consider all risks that may be present and any risks that may arise from subsequent changes to the property and how they may be related to the existence and use of the pet door, including improper use.
- When cutting metal surface materials, watch out for sharp edges to prevent injury.

NOTICE

- Keep these instructions and ensure that any new owner of the product has them.
- If the mounting surface (door, wall, etc.) is not level, the pet door must be installed level to allow it to swing out properly.
- When using a cutting template, there should be a minimum of 3 inches (8 centimeters) between the bottom and sides of the door and the outer edge of the template to maintain the structural integrity of the door.
- Use a hand screwdriver to tighten the screws. Do not overtighten. Excessive tightening can strip the screws or deform the pet door frame.

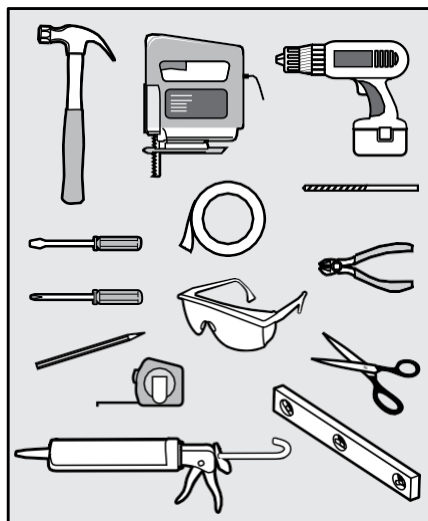
KEEP THESE INSTRUCTIONS

Contents of the package



You will need

- Folding tape measure
- Level
- Pencil
- Hammer and flathead screwdriver (if you are removing the door from the verandah when installing the pet door)
- Scissors
- Masking or painter's masking tape
- Drill
- 1/2-inch (12 mm) drill bit
- 1/4 inch (7 mm) drill bit
- A straight saw (or keyhole saw) with a suitable blade for the material to be cut
- Phillips screwdriver
- Wire cutter
- Sealing gun
- Protective glasses

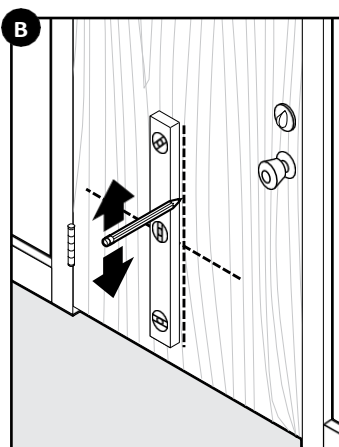
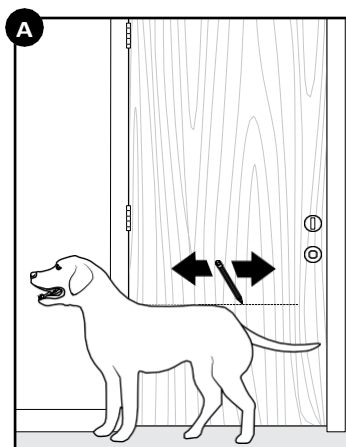


NOTE: Although the instructions in this manual explain how to install pet doors in doors, they can also be installed in most walls; the installation procedure is the same. Pet doors are not designed to be installed in glass. If you are installing a pet door in a door or wall with a thickness of:

- More than 2 inches (51 millimeters), you may need additional tools and materials, such as a wooden frame.
- Less than 1 1/2 inches (38 millimeters), you will need to buy an installation adapter. Visit www.petsafe.com or contact Customer Care.

Marking the location of the door

1. Measure and mark the height of your pet faucet on the inside of the door where you will install the pet door (A).
2. Using a spirit level, draw a vertical line where you want to place the centre of the pet door (B). The pet door must be horizontal to move properly.



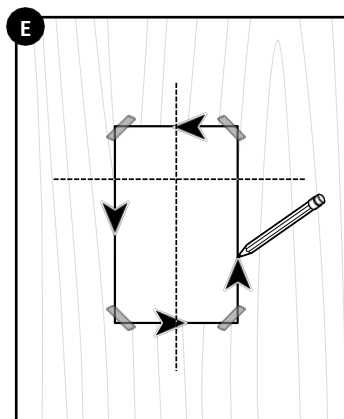
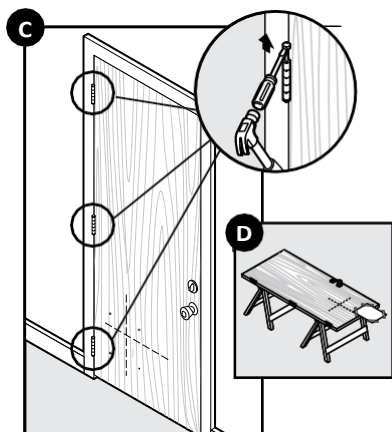
Door preparation

3. If possible, take the door off the hinges (C) and place it on a raised flat surface, for example on two stands (D). The inside of the door should face upwards. Make sure there is no other object under the door - when cutting the opening for the pet door.
If necessary, you can install a pet door without removing the door from the hinges.
4. Cut a template for the correct size door for your pet.
5. Glue the cut-out template to the inside of the door so that the edges and centre/centre lines on the template match the edges and centre lines you drew earlier (E).

NOTICE

Make sure there is a minimum of 3 inches (8 centimeters) between the outer edge of the template and the bottom and sides of the door to maintain the structural integrity of the door.

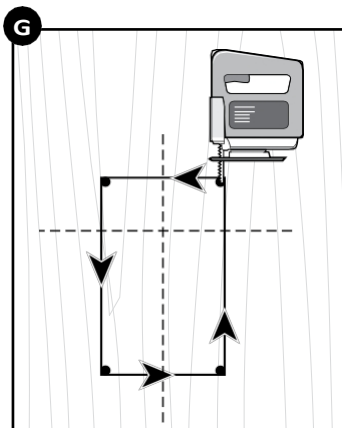
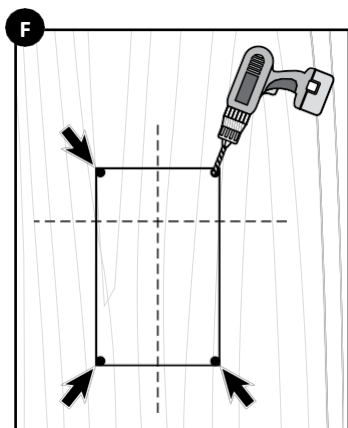
6. Join the outer edge of the cutting template and make sure the corners are joined.
7. Remove the template and any excess tape from the door.



Cutting out the door opening

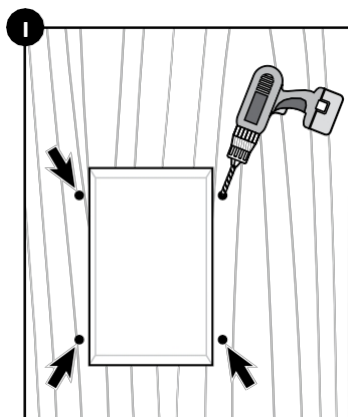
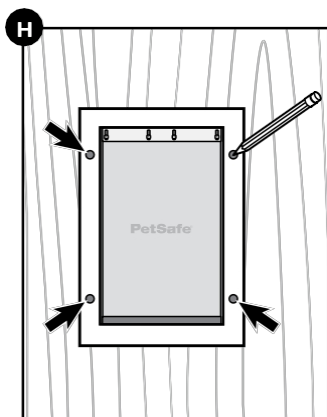
NOTE: Wear safety glasses when drilling holes and cutting a hole for a pet door and make sure to hold the drill and saw with both hands and at a 90-degree angle to the door.

8. 8. Drill 1/2-inch (12 millimeter) holes in the inside corners of the drawn template (F). These will be the initial holes for cutting out.
9. 9. Cut the space between the holes you have just drilled along the drawn lines of the template (G).



Drilling holes for mounting the frame

10. Insert the inner frame (single flap frame) into the hole and mark the screw holes (four holes for medium and large animal doors, six holes for extra large animal doors) (H).
11. Remove the frame and drill 1/4-inch (7-millimeter) holes at the marked locations (I).



Door installation

COMMENT. If you have purchased an installation adapter, place this adapter on the inside and outside frame of the pet door before installation. The installation adapter is only required if you are installing the pet door in a door less than 1 1/2 inches (38 millimeters) thick. Please contact our Customer Care Department for more information.

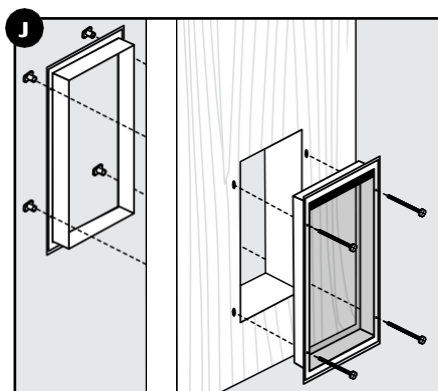
12. Insert the inner frame (frame with one latch) into the hole on the inside of the door (J).

13. Insert the outer frame (frame with two latches) into the hole on the outside of the door.

14. Screw the screws through the holes in the inner and outer frame and connect the screw threads to the end of each screw.

NOTE: Pet door comes with both metal and nylon screws; use as needed. Nylon screws are flexible and can be easily trimmed to fit any door thickness perfectly.

15. Tighten the bolts until the frames are connected and the bolt threads are flush with the outer frame.



NOTICE

Use a hand screwdriver to tighten the screws. Do not overtighten. Excessive tightening can strip the screws or deform the pet door frame.

16. If you are using nylon screws, cut off the excess length of the screws with a wire cutter and file down any rough edges with a metal file.

17. For best weather resistance, seal around the outer frame and inside where the frames meet.

18. If you have removed the door from the hinges, re-hang it.

Training your pet

19. When praising and treats encourage your pet to cross the pet door, lift the flaps or tape them (K). It may help if you are on one side of the door and your pet is on the other. Don't force your pet through the door.

20. When your pet has gone over the pet door several times, loosen the latches so they touch your back pet to be comfortable using this new door.



Using the closing panel

A closing panel is useful in inclement weather or to prevent your pet from using the door at certain times.

To use the closing panel, insert it into the slots on each side of the pet door frame (L). Pull and release the latch to secure it in place.

To remove it, pull the latch and slide the closing panel up and out of the pet door frame.

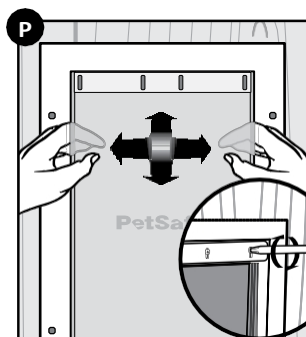
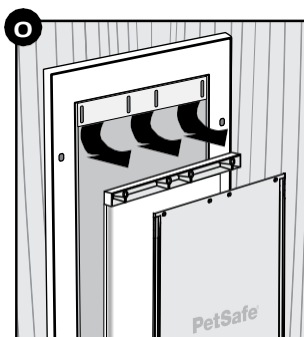
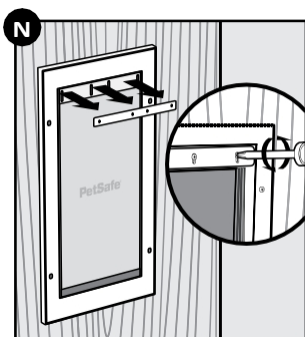
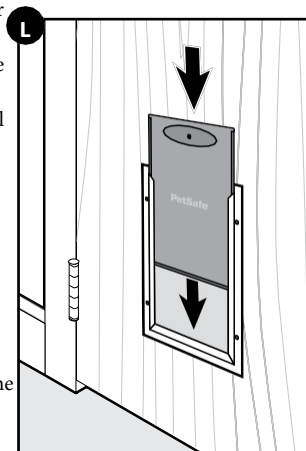
To increase weather resistance, you can use an additional closure panel (sold separately) on the outer frame of the pet door.

Adjusting or replacing the latch

Vinyl pet door flaps can shrink or expand due to seasonal weather changes. Replace or adjust flaps as needed to maximize energy efficiency.

Vinyl flap replacement

1. Remove the latch screws from the top of the pet door frame (N).
2. Remove the vinyl flap and flap clamp (O). On the outer frame, the insulated flap is attached to the flap clamp.
3. Insert the new vinyl flap between the pet door frame and the clamp. The legible on the vinyl flap.
4. Screw in and partially tighten the screws.
5. Adjust the vinyl flap horizontally and vertically so that it is centered in the pet door frame and the magnets on the flap and frame are touching (P).
6. Tighten the screws.



The action of the vinyl flap

1. Slightly loosen the bolts of the latches at the top of the pet door frame (N).
2. Adjust the vinyl flap horizontally and vertically so that it is centered in the pet door frame and the magnets on the flap and frame are touching (P).
3. Tighten the screws.

Terms of Use and Limitation of Liability

1. Terms of use

Use of this product is subject to your consent without modification to the terms, conditions and notices contained in this product. Use of this product constitutes acceptance of all such terms, conditions and notices. If you do not wish to accept these terms, conditions and notices, please return the unused product in its original packaging and at your own cost and risk to the appropriate customer care location with proof of purchase and a full refund.

2. Correct use

Proper use includes, without limitation, reviewing the entire product instructions and all specific safety information. Your pet's specific temperament or size/weight may not be appropriate for this product. If you are unsure if this product is appropriate for your pet, consult your veterinarian or certified trainer before use. For products used with pets where training is required, Radio Systems Corporation recommends that these training products not be used if your pet is aggressive and assumes no responsibility for determining product suitability on a case-by-case basis.

3. No illegal or prohibited use

This product is for use with pets only. This product is not intended to harm, injure or provoke. Use of this product contrary to its intended use may result in violation of federal, state or local laws.

4. Limitation of liability

In no event shall Radio Systems Corporation or any of its affiliates be liable for (i) any direct, indirect, punitive, incidental, special or consequential damages and/or (ii) any loss or damage arising out of the use or misuse of this product. Buyer assumes all risk and liability from the use of this product to the maximum extent permitted by law.

5. Modification of the terms and conditions

Radio Systems Corporation reserves the right to change the terms, conditions and notices relating to this product from time to time. If such changes have been communicated to you prior to use of this product, they will be binding on you as if incorporated herein.

Warranty

This product has the advantage of a non-transferable limited one-year (USA) or three-year (Canada, Europe, Australia/New Zealand) manufacturer's warranty. Complete warranty information for this product and its terms can be found at www.petsafe.com or available by contacting customer support:

Europe: Radio Systems PetSafe Europe Ltd; 2nd floor, Elgee Building, Market Square; Dundalk, Co. Louth, A91 YR9X Ireland

Claim Procedure: Any claim under this warranty should be made directly to the Radio Systems Australia Pty Ltd Customer Care Centre at:
Radio Systems Australia Pty Ltd.
PO Box 3442, Australia Fair
QLD 4215, Australia

E-mail: aus-info@petsafe.net

Proof of purchase is required to make a claim. Radio Systems will not repair or replace defective components without proof of purchase. Radio Systems asks the consumer to contact the Radio Systems Customer Care Center for a warranty return number before shipping the product. Failure to do so may delay repair or replacement of the product.

If the product is deemed defective within 30 days of the original purchase date, Radio Systems will arrange for a replacement to be sent before returning the defective product. A mailing bag will be included with the return of the defective product to package the replacement product. The product must be returned within 7 days of receipt for exchange. If the product is deemed defective after 30 days from the date of original purchase, the customer will be required to return the product back to Radio Systems at their expense. Radio Systems will test and replace the defective equipment or components and return to the consumer free of charge provided the product is within the stated warranty period. This warranty is in addition to any other rights and remedies available to you under the law. Radio Systems' goods are covered by warranties that cannot be excluded under the Australian Consumer Law. In the event of a material failure, you are entitled to replacement or refund and all other reasonably foreseeable loss or damage. You are also entitled to a repair or replacement of the goods if the goods are not of acceptable quality and the failure does not constitute a major defect.

The device has been approved for use in EU countries and is therefore provided with the **CE mark**. All necessary documentation is available on the website: www.electric-collars.com
Changes to technical parameters, properties and printing errors reserved.

Service center and distribution

Reedog, sro

Sedmidomky 459/8 101

00 Prague 10

Phone: +1 646 980 4569

Email: info@electric-collars.eu