

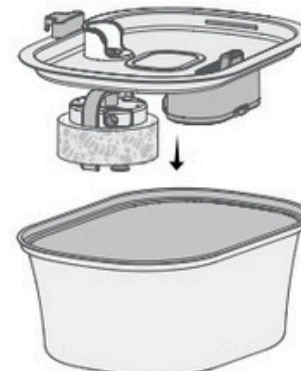
PETWANT PWS 119 STAINLESS STEEL FOUNTAIN FOR PETS 3,2 l



Before we begin: Care instructions
To give your pet a continuous supply of fresh and clean water, don't forget these three simple tasks:

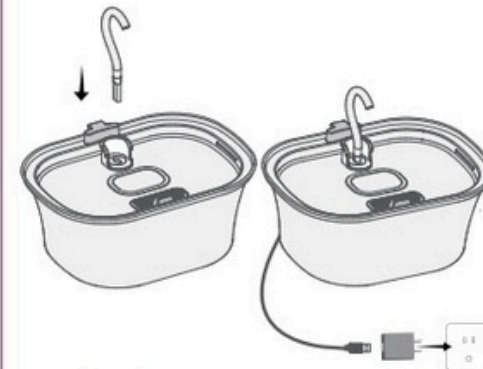
- Timely replenishment: the water level must be higher than MIN water mark. Otherwise, the water pump can cause a malfunction
- Disassemble the pump and fountain: clean with soap and water every 2-4 weeks. Do not wash the filter with soap, as it cannot be completely rinsed out.
- Change the filter regularly: replace the carbon filter every 2-4 weeks; the sponge filter every 4 weeks.

2 Installing the cover



Put the cover back on and turn it to lock it in place.
Note: Make sure the pump is secured in the correct place.

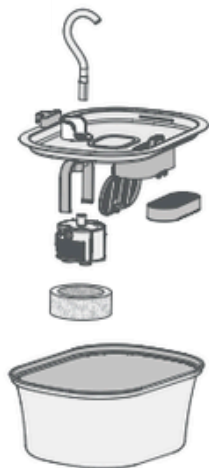
3 Insert the tap.



Insert the tap.

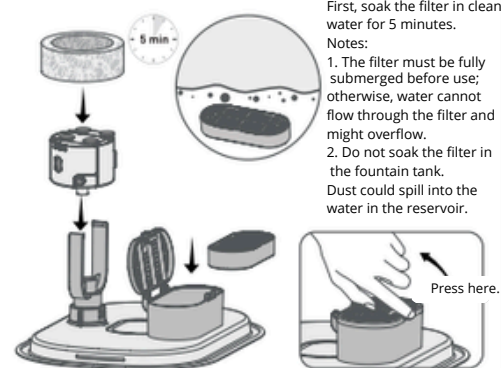
Connect the power adapter

What you have



1 Setup instructions

Insert the pump into the pump holder. Then put the sponge on the holder. Place the carbon filter in the filter housing and close it.



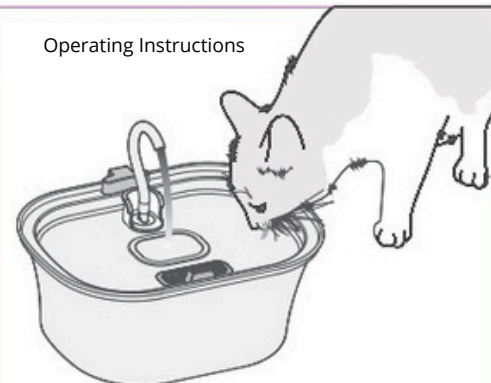
First, soak the filter in clean water for 5 minutes.

Notes:

1. The filter must be fully submerged before use; otherwise, water cannot flow through the filter and might overflow.
2. Do not soak the filter in the fountain tank. Dust could spill into the water in the reservoir.

Press here.

Operating Instructions

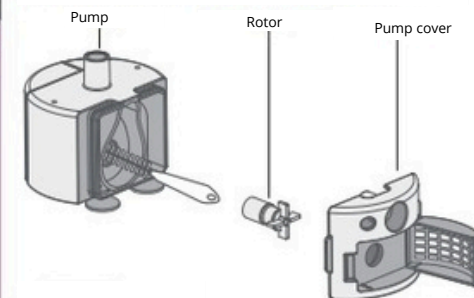


Place the fountain where your pet will use it. Fill the bowl with enough water, but lower than the MAX mark. Make sure your hands, the cord, and the power adapter are dry, then plug the fountain into an outlet.

Keep a healthy and happy flow!

Clean the pump and fountain every two weeks.

Remove the pump cover and rotor. Use a brush to clean the parts with water.



Warning

1. When the fountain is not in use, be sure to turn off and disconnect the power for safety reasons.
2. This product is for indoor use only.
3. The power adapter and the wire plug must remain dry during cleaning.
4. This fountain shall not be operated without water.
5. Disconnect the power supply before servicing and cleaning the fountain.

The device has been approved for use in EU countries and is therefore provided with the **CE mark**. All necessary documentation is available on the website: www.electric-collars.com
Changes to technical parameters, properties and printing errors reserved.

Service center and distribution

Reedog, sro

Sedmidomky 459/8 101

00 Prague 10

Phone: +1 646 980 4569

Email: info@electric-collars.eu