



enabot ROLA Smart Pet Water Fountain Instruction Manual

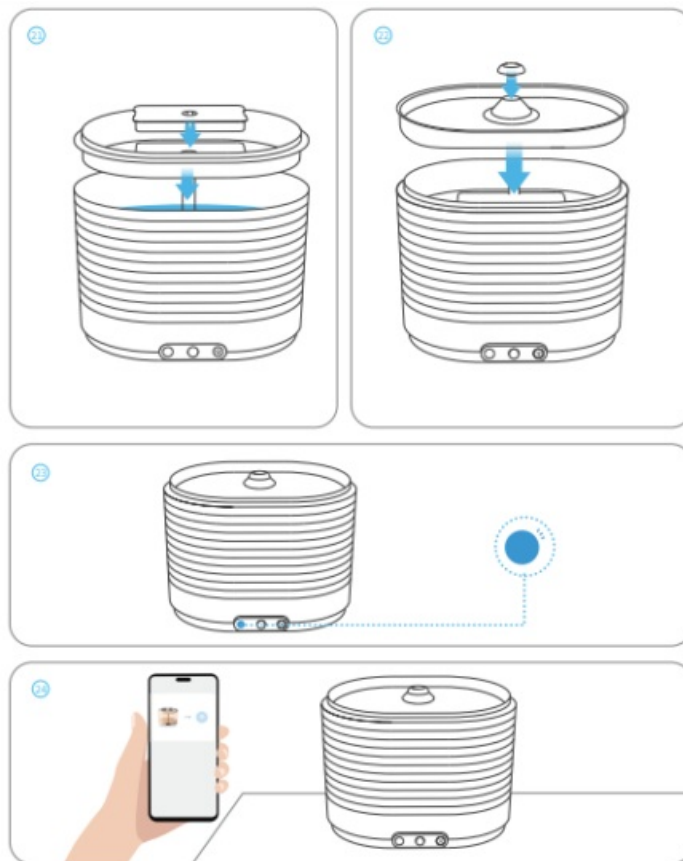
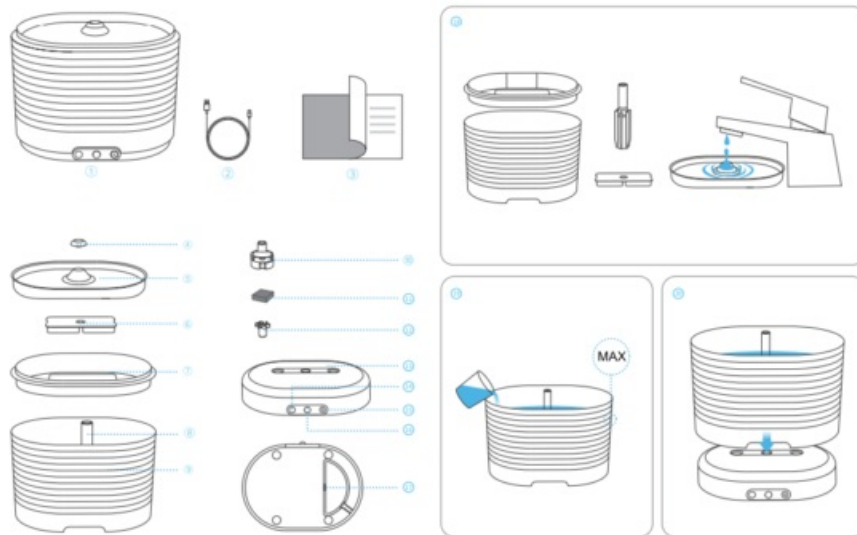
[Home](#) » [enabot](#) » enabot ROLA Smart Pet Water Fountain Instruction Manual 



Contents

- 1 Smart Pet Water Fountain
- 2 Safety Instructions
- 3 Packaging Information
- 4 Status Indicator Light
- 5 Operation Key
- 6 Mode Description
- 7 Installation Instructions
- 8 Networking Instructions
- 9 Technische Daten
- 10 Legal Statement
- 11 FCC Warning
- 12 Documents / Resources
 - 12.1 References
- 13 Related Posts

Smart Pet Water Fountain



Scan the QR code above Download the ROLA App
<http://downloads.enabot.com>

Safety Instructions

Please read the following safety instructions carefully and take normal safety precautions before using this product.

1. The product is suitable for DC output 5V 2A power adapter. Please use a power adapter that complies with relevant national and regional standards.
2. If the device cannot work properly due to damage from falling, being placed outdoors, or water intrusion, please stop using it immediately.
3. Please do not place, charge or use this device outdoors or in the bathroom. Place the equipment at least one meter away from the pool. Do not place the device on wet ground or expose it to rain or snow.
4. Do not touch the device's power supply with wet hands.
5. Do not use damaged power cords or plugs. If the power cord is damaged, please contact your supplier or the manufacturer's after-sales maintenance department immediately to replace it with a new one to avoid damage.
6. When unplugging the charging device, please hold the charging device with your hands and do not drag the power cord. Do not use power extension cords for power.
7. When in use, the equipment must be provided with safely-rated low voltage that meets the relevant requirements.
8. Please place the device on a table away from heat sources, fire sources or other high temperatures.
9. Do not immerse the base in water or any other liquid.
10. If the base is exposed to water, please dry the outer surface before continuing to use it.
11. Do not use hot water in the bucket.
12. Please do not disassemble, modify or repair this product by yourself, otherwise you will lose all warranty and service rights.





Packaging Information

1. Water Fountain
2. Charging Cable
3. Manual

Product Introduction

4. Nozzle
5. Stainless steel basin
6. Filter
7. Filter tray
8. Outlet pipe
9. Bucket
10. Outlet pipe bracket
11. Sponge
12. Rotor
13. Bucket base
14. Status indicator light
15. Touch button
16. PIR sensor
17. Type-C charging port

Status Indicator Light

Status Indicator Light	Working Status
 Flashing blue	Waiting for network configuration
 Steady white	continuous water mode
 Steady green	sensor mode
 Flashing red	low battery reminder (wireless version)

Operation Key

Operate	State
Press and hold for 3 seconds(from off state)	power on
Press and hold for 3 seconds (from on state)	enter network configuration mode
Click	switch water outlet mode
Click + long press for 3 seconds	power off

Mode Description

Mode Description	State
Continuous water mode	The device continuously discharges water(must be plugged in)
Sensor mode	The device will discharge water once if it senses the approach of a person /pet *By default, the device sleeps for 15 seconds after each water discharge. If no water is detected within 2 hours, the device will automatically discharge water once. *The water-release time and sleep time can be set manually in the ROLA App

Installation Instructions

1. Rinse the bucket, outlet pipe, filter, filter tray, stainless steel basin and other water-related parts with clean water. 18
*After removing the protective bag from the filter, rinse it with clean water for 3-5 minutes.
*Do not rinse the base with water.
2. Install the water outlet pipe into the bucket and add water until it reaches the MAX water level. 19
3. Align the bucket with the base's positioning holes to place the bucket on the base.
4. Place the filter in the groove on the filter tray and place it on the bucket.
5. Install the stainless steel basin and nozzle onto the bucket, and check whether all accessories are placed correctly. 22

Networking Instructions

1. After the water fountain is turned on, press and hold the touch button for 3 seconds, until the status indicator light flashes blue. At this time, the device will enter the waiting state for network configuration. 23
2. Download the ROLA App, click “Add Device” or ” ” on the homepage, and follow the steps to complete the device’s network configuration. Please be sure to fill in the correct Wi-Fi name and password. 24
*Please ensure that your mobile phone is close to the device during the network configuration process.
3. When the App alerts that binding is successful, it means that the device has successfully connected to the network. 21

Technische Daten

Product Name	ROLA Smart Pet Water Fountain
Product Model	Wireless version: ROLA Fountain-01 Plug-in version: ROLA Fountain-02
Product Size	223*161*163mm
Product Weight	Wireless version: 975g Plug-in version: 875g
Materials	ABS, stainless steel, silicone
Water Tank Capacity	2.0L
Wireless Frequency	2,4GHZ
Input Voltage	5V 2A
Proper Water Temperature	0 – 40°C

Legal Statement

1. Before using the product, please read this document and keep it for reference.
2. The illustrations and descriptions in this document are for reference only, and the actual product should take precedence. For certain specifications and configurations, please check the relevant specification documents or consult the seller.
3. The nominal storage capacity and technical performance indicators are only specifications. Actual data may vary depending on the environment and settings, etc. Factors vary.
4. If you use other products or software, you are solely responsible for compatibility and legality.
5. No content in this document shall constitute a modification of Enabot’s product warranty policy.
6. This product is not designed for organ transplantation or other life support system applications. In such applications, product failure may result in personal injury or death.
7. No one may copy, delete, compile, store, transmit or translate this document without Enabot’s authorization.

FCC Warning

This device complies with part 15 of the FCC Rules. Operation is subject to the following two conditions:

(1) This device may not cause harmful interference, and (2) this device must accept any interference received, including interference that may cause undesired operation.

Any Changes or modifications not expressly approved by the party responsible for compliance could void the

user's authority to operate the equipment.

Note: This equipment has been tested and found to comply with the limits for a Class B digital device, pursuant to part 15 of the FCC Rules. These limits are designed to provide reasonable protection against harmful interference in a residential installation. This equipment generates uses and can radiate radio frequency energy and, if not installed and used in accordance with the instructions, may cause harmful interference to radio communications. However, there is no guarantee that interference will not occur in a particular installation. If this equipment does cause harmful interference to radio or television reception, which can be determined by turning the equipment off and on, the user is encouraged to try to correct the interference by one or more of the following measures:

- Reorient or relocate the receiving antenna.
- Increase the separation between the equipment and receiver.
- Connect the equipment into an outlet on a circuit different from that to which the receiver is connected.
- Consult the dealer or an experienced radio/TV technician for help.

This equipment complies with FCC radiation exposure limits set forth for an uncontrolled environment.

This equipment should be installed and operated with minimum distance 20cm between the radiator & your body.

Social Media

Instagram

@enabot_official



@enabot



@enabot_official



@enabot

For General Questions: ebo@enabot.com

For Technical Support: support@enabot.com

For Business : sales@enabot.com


For Marketing : marketing@enabot.com



55.1204.0000111

www.enabot.com

Documents / Resources

	enabot ROLA Smart Pet Water Fountain [pdf] Instruction Manual ROLA Smart Pet Water Fountain, ROLA, Smart Pet Water Fountain, Pet Water Fountain, Water Fountain
--	--

References

- [Enabot - Advanced AI Guardian Robots for Family and Pet – Enabot Store](#)
- [User Manual](#)

[Manuals+](#), [Privacy Policy](#)

This website is an independent publication and is neither affiliated with nor endorsed by any of the trademark owners. The "Bluetooth®" word mark and logos are registered trademarks owned by Bluetooth SIG, Inc. The "Wi-Fi®" word mark and logos are registered trademarks owned by the Wi-Fi Alliance. Any use of these marks on this website does not imply any affiliation with or endorsement.