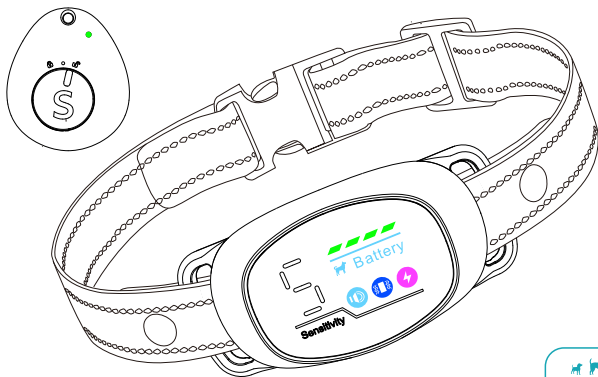


# STATIC SHOCK ANTI-BARK COLLAR WITH REMOTE TAG



  
SUITABLE FOR ALL BREEDS

## User Manual

Please read the operating instructions carefully before using the product. Pay special attention to all warnings and safety instructions.  
Keep this manual for later reference.



## Important Safety Information



**NOT for aggressive dogs!**



**For dogs over 6 months**



**Keep out reach of Children!  
For DOG use only!**

- DO NOT leave the collar on the dog for more than 12 hours per day.
- When possible, re-position the collar on the dog's neck every 1 to 2 hours.
- Check the fit to prevent excessive pressure; follow the instructions in this manual.
- DO NOT connect an extra leash to the collar, which will cause excessive pressure on the contacts.
- Clean the contact area on your dog's neck and the spring prongs of the collar with a damp cloth every week.

## Product Information



**Bark Collar**



**Remote Tag**



**User Manual**



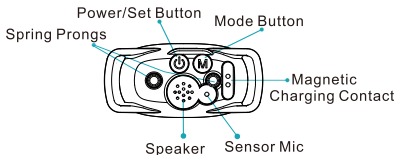
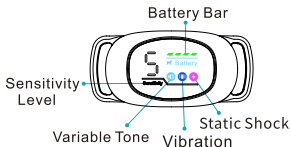
**Magnetic  
Charging Cable**

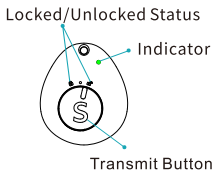


**Test Bulb**



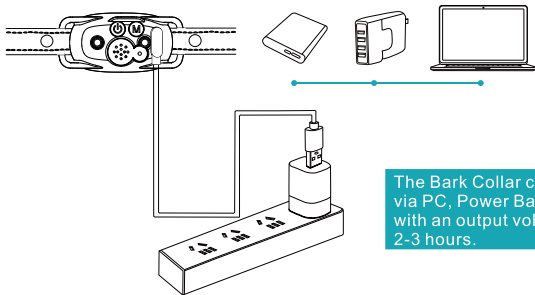
**Wrist Strap**





## Test The Product

### 1A. Charge Bark Control Collar before use.



The Bark Collar can be charged via PC, Power Bank or Charger with an output voltage of 5V for 2-3 hours.

#### Description of Charging

When the Bark Collar is on charge, the Battery Bar blinks from left to right and the Indicator blinks fast.

When the Bark Collar is fully charged, Battery Bar stop blinking and the Indicator becomes solid.

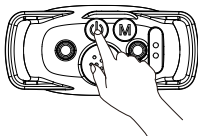


A Beeping will be delivered if the Bark Collar is not on charge with a 5V-rated charger.

## Note:

1. Make sure to use a 5V-rated charger to charge the Bark Collar.
2. Use the magnetic charging cable in the package when charging. Other charging cables may not be suitable for this Bark Collar and may cause electric damage.
3. The charger, power bank and other charging devices shown in the above picture are not included in the box.

### 1B. Power on the Bark Collar



Press and hold the Power Button for 3 seconds to power it on.

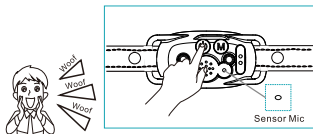


The display will turn on with a vibration /beeping.

### 1C. Set the Bark Collar to Test Mode

Set the Bark Collar to Test Mode by pressing the Power On/Off Button until the display shows 0.

After that, imitate a dog bark towards the Sensor Mic located at the back of the Bark Collar.



- Press the Power On/Off Button to get to the Test Mode, and make sure the digit shows 0 before the test.

### 1D. The Response of the Bark Collar in the Test Mode



When the Bark Collar is set to the Test Mode, no matter what mode it is in, it will deliver a Variable Warning Tone, a Vibration and a Static Shock after you imitate a dog bark towards the Sensor Mic.



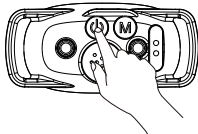


Hold the Test Bulb Tool on the Spring Prongs when test the shock function.

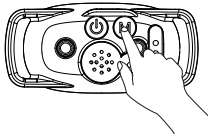
If the Bark Collar responds as described above, you've succeeded in setting up the Bark Collar properly.

## How to Set the Automatic Modes?

The following instruction will guide you on how to switch modes.



1. Power on the Bark Collar by pressing and holding the Power On/Off Button for 3 seconds.



2. Press the Mode Button to switch modes, the mode icons will be changed.

## 3. Four Main Training Modes:



**Variable Warning Tone Mode**

6 Variable Warning Tone of different frequencies in 6 steps.



**Vibration Mode**

3 different levels of Vibration in 3 steps.



**Variable Warning Tone + Vibration Mode**

6 Variable Warning Tone + 3 different levels of Vibration Working collaboratively in 6 steps.



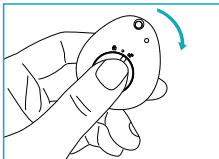
**Variable Warning Tone + Vibration + Static Shock Mode**

6 Variable Warning Tone + High level Vibration + 6 level Static Shock working collaboratively in 6 steps.

## How to Use Remote Tag ?

Usually the Automatic Modes can stop the dog barking. With the Remote Tag, you can manually stop the excessive barking in some situations or from dogs with behavior issues and not well-trained. Use it only when necessary.

### 1. Slide the Switch to Unlock Remote Tag.



2. Press the Transmit Button on the Remote Tag till the green indicator lights up and then release. The Bark Collar will deliver a Tone + Vibration.



3. Press and hold the Transmit Button for 1.5 seconds, the product will activate Tone+Vibration indicated by green indicator, after which the Static Shock +Tone will be activated indicated by the red indicator.

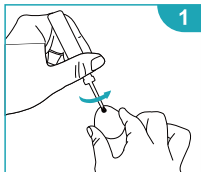


## How to Replace A New Battery

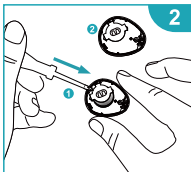
The Remote Tag comes with a 3V lithium coin cell battery (CR2032) installed.

If indicator on Remote Tag is not responding, you will need to purchase a new battery and replace it by yourself.

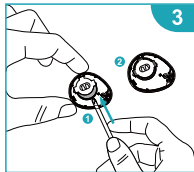
Here are instructions for coin cell battery replacement.



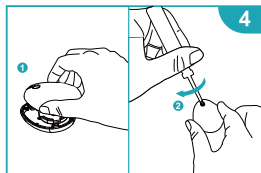
1. Use a Phillips Screwdriver to disassemble the Remote Tag.



2. Take out the old battery from the battery holder.



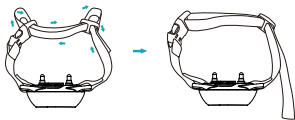
3. Prepare a new battery (Note: the new battery is not included in the package, you need to buy it yourself), then install it into the battery holder.



4. Use a Phillips Screwdriver to assemble the Remote Tag.

## Put the Bark Collar on Your Dog

Note: have a look if you have a small dog!



Please ensure to fit the Bark Collar snugly, yet loose enough to allow one finger to fit between the strap and your dog's neck.



Great! Now you have successfully put the Bark Collar on your dog and it's ready for training!

## Display & Indicator

### Display on Bark Collar

#### Modes Icons

Variable Warning Tone  Vibration  Static Shock 


#### Protection Mode

 Product is in 30 seconds of protection period.


#### Battery Bar

 Battery bars indicate battery power.

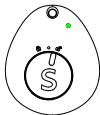
#### Sensitivity Level

 Adjust the Sensitivity Level from 1-5 by pressing the Power On/Off Button (Level 5 is the most sensitive while level 1 is the least sensitive)

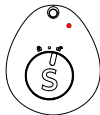
#### Test Mode

 When the Bark Collar is set on Test Mode, the digit shows 0 and then will show 5 after the test is completed, or if the test is not operated within 5 seconds.

## Indicator on Remote Tag



1. Press the Transmit Button, the green indicator will light up.



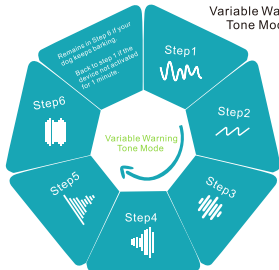
2. Press and hold the Transmit Button, the green indicator will light up first, followed by the red indicator.

# How the Bark Collar Works

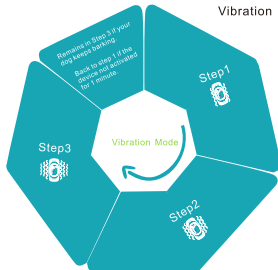
## 1. Automatic Modes:



### Variable Warning Tone Mode



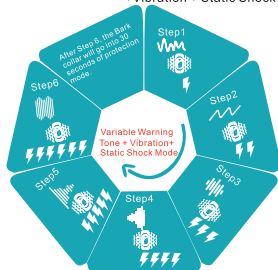
### Vibration Mode



### Variable Warning Tone +Vibration Mode



### Variable Warning Tone +Vibration + Static Shock Mode



## Icon Description:



Variable Warning Tone



Vibration



Static Shock

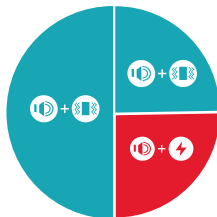
## NOTES:

- 1.The Bark Collar will go to the next step if your dog keeps barking within 1 minute.
- 2.The Bark Collar will automatically go back to Step 1 if it is not activated within 1 minute.

## 2. Manual Modes:

Press Transmit Button: Tone+Vibration;

Press & Hold Transmit Button for 1.5s: Tone+Vibration; Static Shock +Tone



## Frequently Asked Questions Answers

### Q: Why doesn't the product work when the dog barks?

A: Please first ensure to fit the product snugly, yet loose enough to allow one finger to fit between the strap and your pet's neck. Some dogs has weak barking, in this case you will need to level up the sensitivity level. Thick coat on the neck area may also have small chance to decrease the sensing from the barking, trim the coat near the area where you place the product.

### Q: Why is the product triggered sometimes in a noisy environment though the dog isn't barking?

A: Though we have optimized the barking detection to the best, some environment noises may have similar frequency to barking, which may have small chance to activate the product. Please lower the sensitivity level.

**Q:Can I use the product when there are other dogs playing around?**

A:Dogs will bark when playing and get excited, for the comfort and safety of your pet, we don't suggest using this product in such environment.

**Q:How do I know if I can use this product for my pet?**

A:The product is designed for healthy dogs over 6 months old, weighing no less than 8 pounds.

Most importantly, this product cannot be used on unhealthy or aggressive dogs, and if you are unsure whether this product is appropriate for your pet, please consult your veterinarian or a certified trainer.

**Q:Can this product stop my dog's howl?**

A:No, this Bark Control Collar is designed to detect the barking only. It cannot detect or stop the howling.

**Q:Can I charge this product with any type of charger?**

A:No, you are suggested to charge this product with charger of 5V output voltage, because charger with output voltage of 9V or 12V may cause damage to the product. The product will stop charging automatically if input voltage becomes too high and the power indicator turns red.

**Q:Will my dog stop barking completely?**

A:The Bark Control Collar effectively and humanely stops all barking when it is worn. It should only be worn during periods of unwanted barking.

**Q:Is the Bark Control Collar safe and humane?**

A:Yes. The Bark Control Collar is designed to get your dog's attention, not to punish him. However, the initial Static Shock correction may startle your dog.

**Q: When should I use the remote tag?**

A: Use the remote tag to manually stop the barking when you feel the automatic modes cannot avoid the excessive barking.

Model:S7  
Version:1.0  
Made in P.R.C

The device has been approved for use in EU countries and is therefore provided with the **CE mark**. All necessary documentation is available on the website: [www.electric-collars.com](http://www.electric-collars.com)  
Changes to technical parameters, properties and printing errors reserved.

**Service center and distribution**

Reedog, sro

Sedmidomky 459/8 101

00 Prague 10

Phone: +1 646 980 4569

Email: [info@electric-collars.eu](mailto:info@electric-collars.eu)