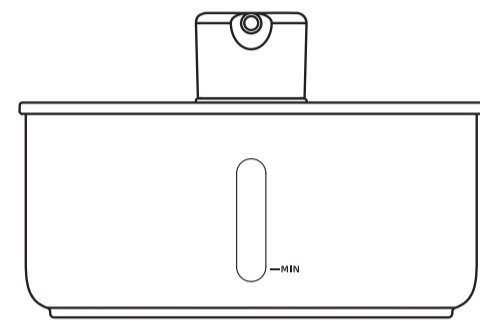


User Manual

W11-S2 Pet Water Fountain



Please read the manual carefully before using this product.

Safety Precautions

Keep Device

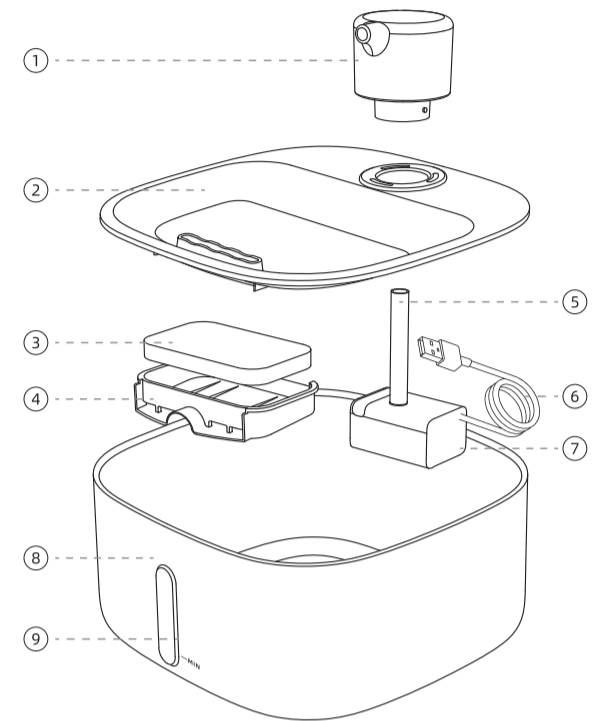
1. Please ensure that the device is placed on a stable surface, and it should not be tilted, shaken, or inverted.
2. Please use the device indoors, avoiding environments with high temperature, high humidity, and direct sunlight.
3. Do not install or store the device in locations where the temperature is below 0°C or above 40°C.

Attentions

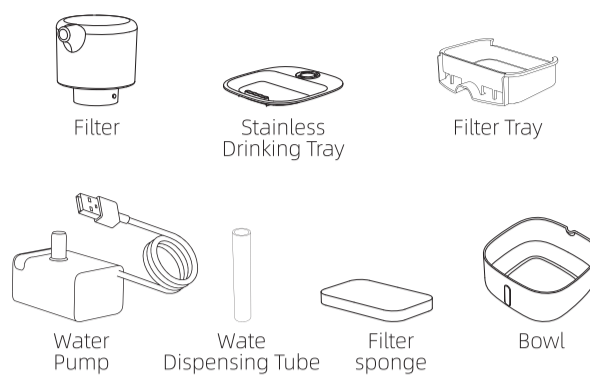
1. Please ensure the device is plugged in when unattended to guarantee stable operation.
2. For safety reasons, always disconnect the power supply when the device is not in use.
3. This product is suitable for cats and small dogs only.
4. This product is intended for individuals aged 12 and above. Children should use the device under close adult supervision.
5. The filler inside the filter cartridge is inedible. Do not use the cartridge if it is damaged.
6. Never submerge the main unit in water, as this could result in damage to the electronic components.
7. Do not disassemble, repair, or modify the device on your own, as this may void the warranty.
8. To prevent electric shock, never immerse the power cord or plug in water or any other liquid.
9. Keep the charging port dry. If the port becomes wet, ensure it is completely dry before charging.
10. The device only supports charging with a 5V/1A adapter. Do not use adapters that exceed these specifications.
11. Dispose of all packaging materials properly. Some parts may be wrapped in plastic bags, which can pose a suffocation hazard; keep them away from children and pets.
12. Do not use the pet water fountain for any purposes other than its intended use.
13. Before traveling, always check the remaining water level in the fountain. To avoid the device running out of power during your trip, it is recommended to keep it plugged in while traveling.
14. If the device malfunctions or is damaged, do not operate or attempt to repair it yourself.

Features

① Filter	⑥ Water Pump Power Cord
② Stainless Drinking Tray	⑦ Water Pump
③ Filter Sponge	⑧ Bowl
④ Filter Tray	⑨ Visible Water Level
⑤ Water Dispensing Tube	



Components



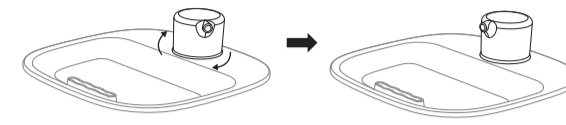
Parameters

Product Name	Stainless Steel Pet Water Fountain
Product Model	W11-S2
Dimension	L227 x W227 x H155mm
Material	SUS304
N.W	0.72kg
Capacity	3.2L
Pets Appliance	Cats & Small size dogs
Power	USB 5V 1A
Rated Power	5W

Product installation

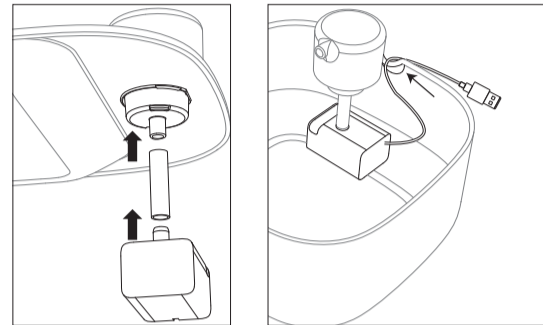
Filter Box Assembly

Insert the filter into the slot and rotate clockwise to lock it.
*Notes: Recommended filter replacement cycle: 3 months.
(Please replace the water pump promptly if clogging occurs)

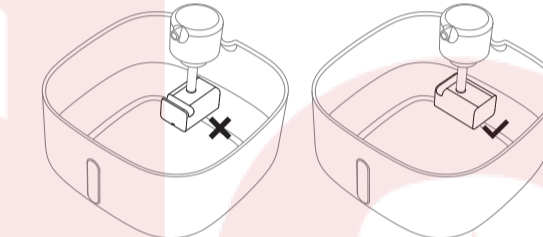


Water Pump Assembly

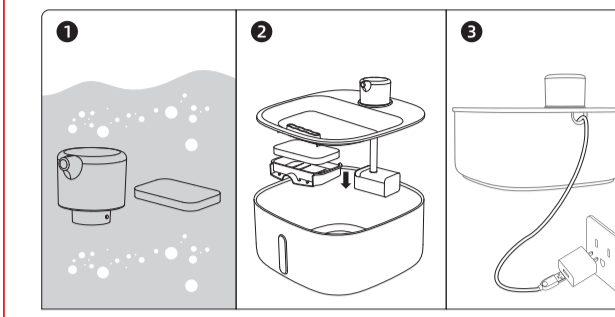
Connect the filter box to the water pump using a conduit pipe, and thread the power cord of the water pump through the hole in the Bowl.



*Notes: When installing the water pump, ensure it is parallel to the main unit and does not come into contact with the inner wall of the water storage tank. This prevents abnormal pump operation during use, which could lead to issues such as the inability to draw water.



Product installation



① Place the filter cartridge and filter sponge in a clean bowl, soak them in clean water for 5 minutes, and thoroughly rinse the filter cartridge.

*Notes:
Be sure to soak the filter fully before starting the water fountain. Otherwise, water may not flow smoothly through the filter, causing overflow. Do not soak the filter in the water fountain tank to avoid any dust on its surface.

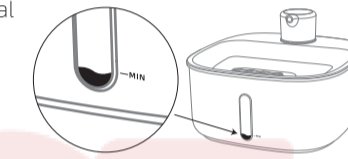
② Place the filter sponge into the filter box and insert it into the slot at the bottom of the drinking water tray. Then, cover the drinking water tray onto the water storage tank.

③ Plug the USB power cord of the water pump into a 5V/1A adapter and insert it into a power outlet. Once the power is connected, the water pump will illuminate with a white light, indicating that the water dispenser has started operating.

Low water level warning

○ White light is on:

Water pump in normal operation



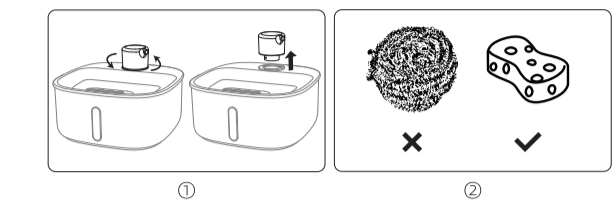
● Red light on:

Water shortage reminder, please add water in time

Product Cleaning

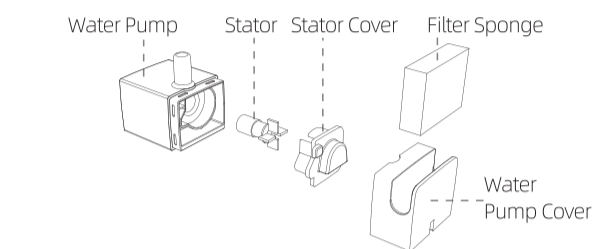
Cleaning the Water Dispenser

- ① Rotate the filter box counterclockwise and then remove it.
- ② Wash all parts. Do not use metal kitchen utensils such as steel balls or abrasive cleaning materials for cleaning to avoid any damages of product's surface.



Pump Cleaning

- ① Remove filter sponge.
- ② Remove water pump cover.
- ③ Remove the stator cover and Stator as well.
- ④ Clean the stator by water.



Maintenance

- ① It is recommended to replace the sponge once a month and the filter element every three months. (Depending on the frequency of use of the user's water dispenser, for multiple pets or continuous water output, it is advisable to replace them once a month.)
- ② Clean the water pump and water dispenser at least every two weeks.

Troubleshooting

Issues	Solutions
Water Overflows	Soak the filter in water for 5 minutes and rinse it thoroughly. Filter stuck or not use for a long period, please replace or clean it in time.
Water pump stops running	Water in bowl is below the minimum line. Clean the water pump, water bowl and water fountain. Please make sure the main engine is well assembled and plug in the adapter.
Low water flow	When first use or use after a long period storage, water pump needs venting. (Normal phenomenon) Dirt or fur inside of water pump, please clean the water pump follow the instructions. Water in bowl is below the minimum line, please fill the water.
Fouling in water bowl and filter	Please change the water in bowl on a regular basis. Please make sure the filter has been soaked and cleaned thoroughly before using.

The device has been approved for use in EU countries and is therefore provided with the **CE mark**. All necessary documentation is available on the website: www.electric-collars.com
Changes to technical parameters, properties, and printing errors are reserved.

Service center and distribution

Reedog s.r.o.

Sedmidomky 459/8

Praha 10 - Michle, 101 00

Phone: +1 646 980 4569

Email: info@reedog.eu

