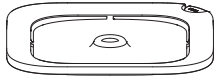
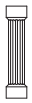


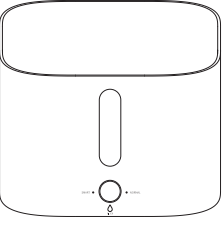
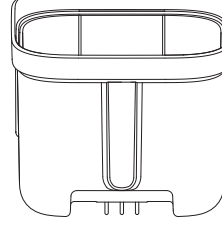
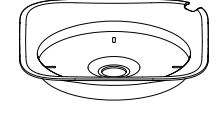
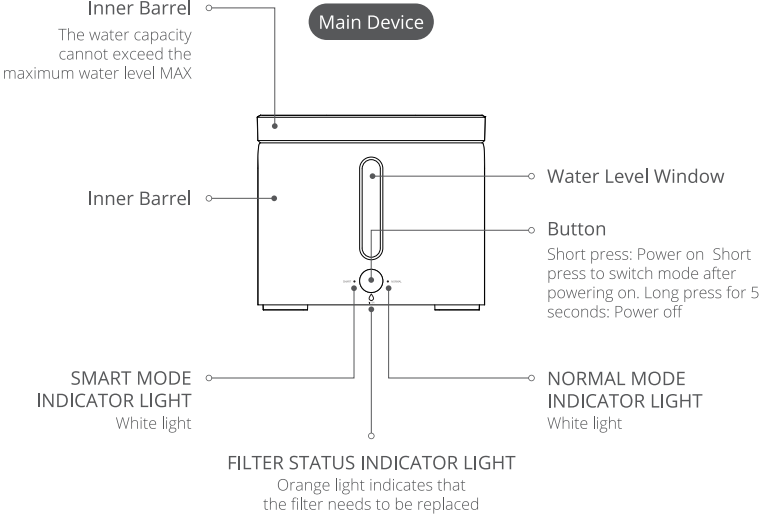
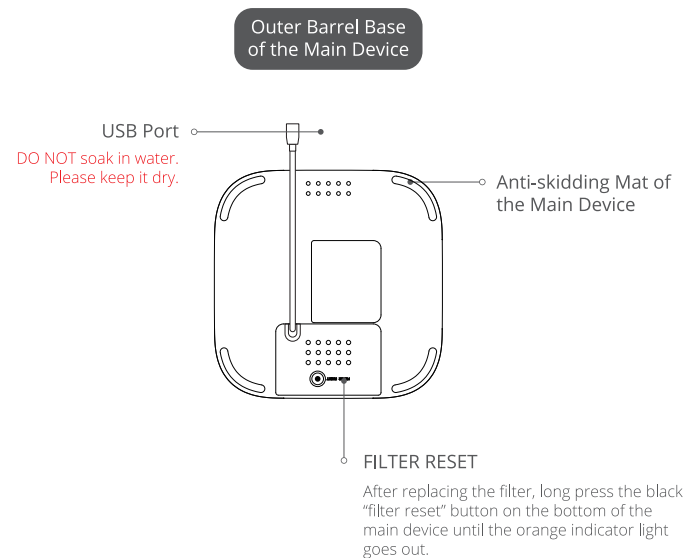


材质: 160g铜版纸, 双面印刷; 尺寸: 360*240mm

正面

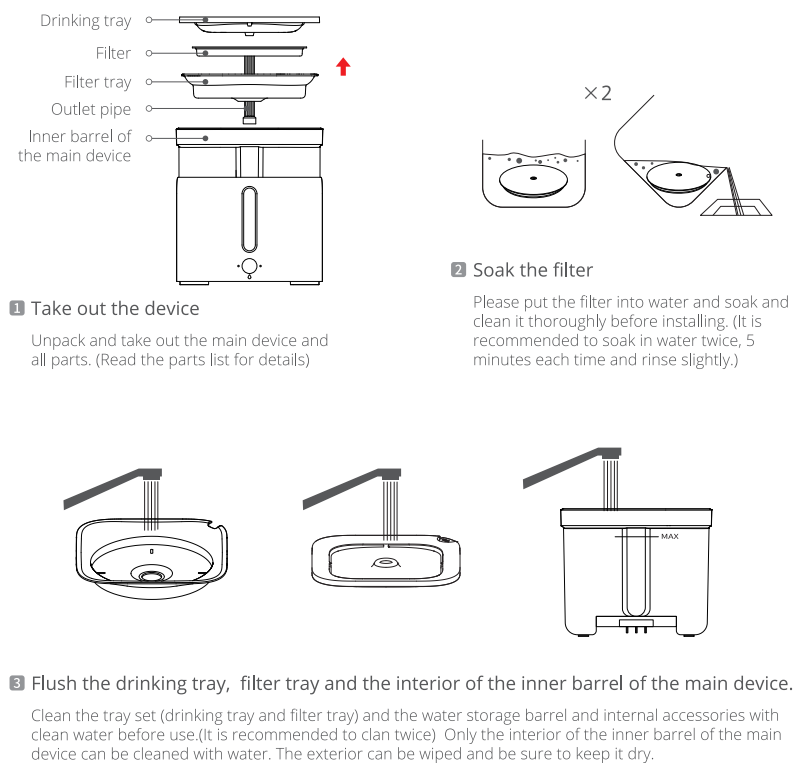
| | | |
|--|---|---|
| <p style="text-align: center;">PETKIT</p> <p style="text-align: center;">EVERSWEET 2S INSTRUCTION MANUAL</p> <p style="text-align: center; font-size: small;">Please read the User Manual carefully before using the product and keep it properly.</p> | <h3>CONTENTS</h3> <p>User Notice ----- 1</p> <p>Safety Instructions ----- 1</p> <p>Parts List ----- 2</p> <p>Product Introduction ----- 3, 4, 5</p> <p>Product Use ----- 6, 7, 8</p> <p>Explanation ----- 9</p> <p>Basic Parameters ----- 9</p> <p>Maintenance and Cleaning ----- 10</p> | <h3>USER NOTICE</h3> <ul style="list-style-type: none"> • Thank you for purchasing PETKIT EVERSWEET 2S Smart Pet Drinking Fountain. PETKIT is committed to creating a better life for you and your pet with technology. • Please read the User Manual carefully before using. Once the product is installed or used, it indicates that you have carefully read and accept the safety instructions below. • Our company will neither assume any responsibility nor undertake any legal liabilities for any accidents and damages caused due to violations. • The company reserves the right of explanation and revision for the terms. <h3>SAFETY INSTRUCTIONS</h3> <p>* Failure to comply with the below warnings may lead to equipment malfunction or other safety concerns.</p> <ul style="list-style-type: none"> • Please install and use the device in strict accordance with the manual. • This device is NOT RECOMMENDED for pets within three months of age. • Please use the device indoors. • This device is at low voltage mode, but the pet biting of wires will still cause electric leakage. Please guide the pet to use properly. • Please use the original USB power cord, otherwise it will damage the device or cause safety hazards. • Keep the device placed horizontally, or DO NOT overturn it, otherwise it will work abnormally or spill water. • DO NOT immerse or soak the bottom of the inner barrel and the outer barrel of the product in water. • If the product is not used for a long period of time or is moved, please remove batteries and unplug the power cord. • If children use this device, be sure to use it under the guidance of adults. • To avoid accidental injury, no one except for the maintenance personnel can repair this product. • Be sure to check the remaining water in the drinking fountain before taking your vacation. • Please contact customer service in time if you have any problem when using this product. <p style="text-align: right;">1</p> |
| <h3>PARTS LIST</h3> <p>*Please confirm before installing and using the device.</p> <div style="display: flex; justify-content: space-around; align-items: flex-start;"> <div style="text-align: center;">  <p>Drinking tray X 1</p> </div> <div style="text-align: center;">  <p>Outlet pipe X 1</p> </div> <div style="text-align: center;">  <p>Filter X 1</p> </div> </div> <div style="text-align: center; margin: 10px 0;">  <p>USB power cord (1.5 meters) X 1</p> </div> <div style="display: flex; justify-content: space-around; align-items: flex-start;"> <div style="text-align: center;">  <p>Outer barrel X 1</p> </div> <div style="text-align: center;">  <p>Inner barrel X 1</p> </div> <div style="text-align: center;">  <p>Filter tray X 1</p> </div> </div> <p style="text-align: center;">2</p> | <h3>PRODUCT INTRODUCTION</h3>  <p>Inner Barrel The water capacity cannot exceed the maximum water level MAX</p> <p>Main Device</p> <p>Water Level Window</p> <p>Button Short press: Power on Short press to switch mode after powering on. Long press for 5 seconds: Power off</p> <p>SMART MODE INDICATOR LIGHT White light</p> <p>NORMAL MODE INDICATOR LIGHT White light</p> <p>FILTER STATUS INDICATOR LIGHT Orange light indicates that the filter needs to be replaced</p> <p style="text-align: center;">3</p> | <h3>PRODUCT INTRODUCTION</h3> <div style="display: flex; justify-content: space-between;"> <div style="width: 45%;"> <p>Interior of the Inner Barrel of the Main Device</p> </div> <div style="width: 50%;"> <p>CNC Silent Pump Make sure to align it with the hold down groove at the bottom of the inner barrel. (*direction as shown in the figure)</p> <p>Detachable Waterproof Connector</p> <p>ULTRA Pump Wire Please do not drag it forcefully</p> </div> </div> <div style="display: flex; justify-content: space-between; margin-top: 20px;"> <div style="width: 45%;"> <p>Interior of the Outer Barrel of the Main Device</p> </div> <div style="width: 50%;"> <p>Main Device Metal Dome Please keep dry Do not immerse them in water</p> <p>Water Shortage Indicator Light</p> </div> </div> <p style="text-align: center;">4</p> |

PRODUCT INTRODUCTION



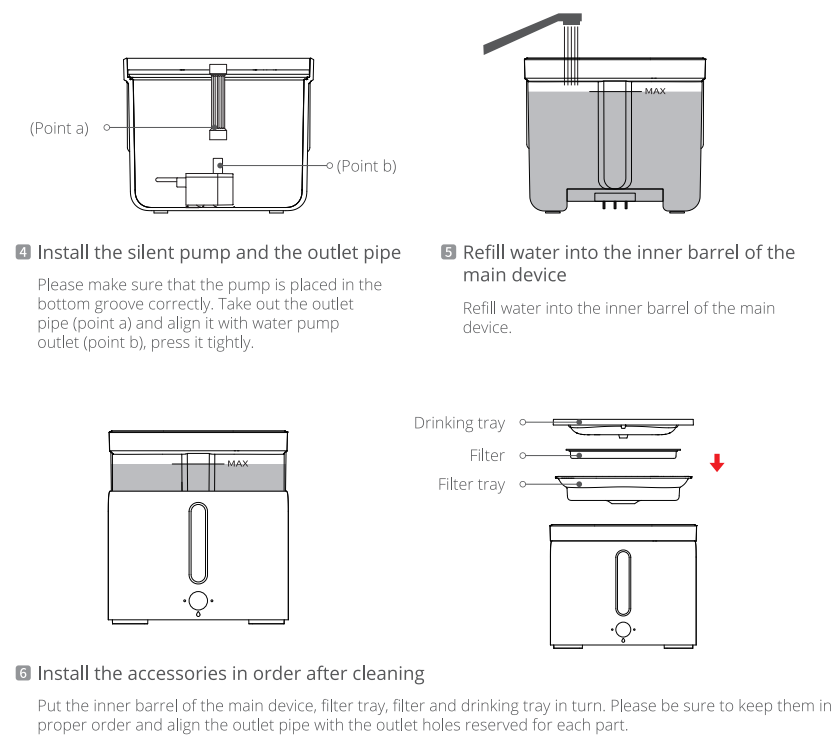
5

PRODUCT USE



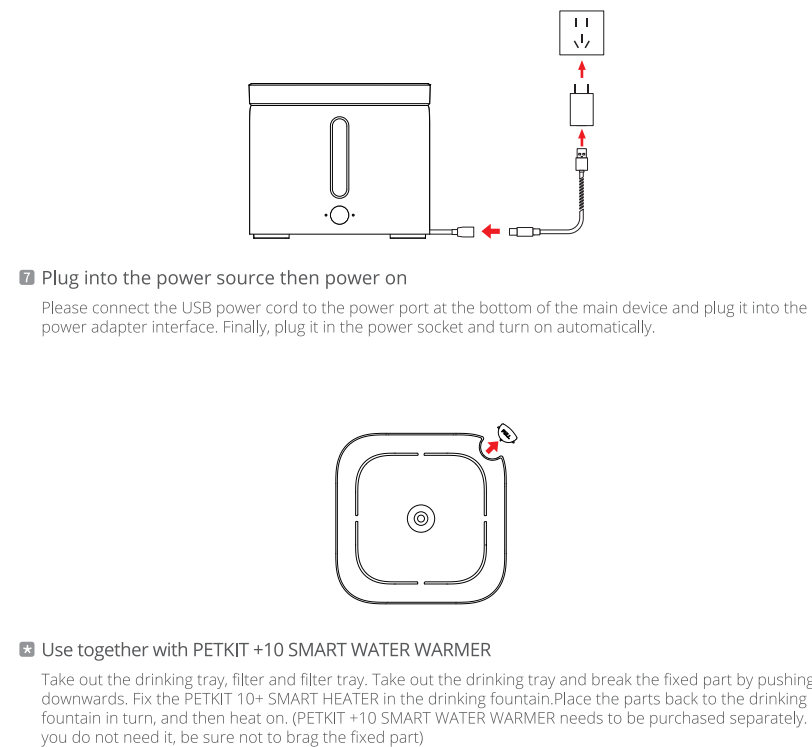
6

PRODUCT USE



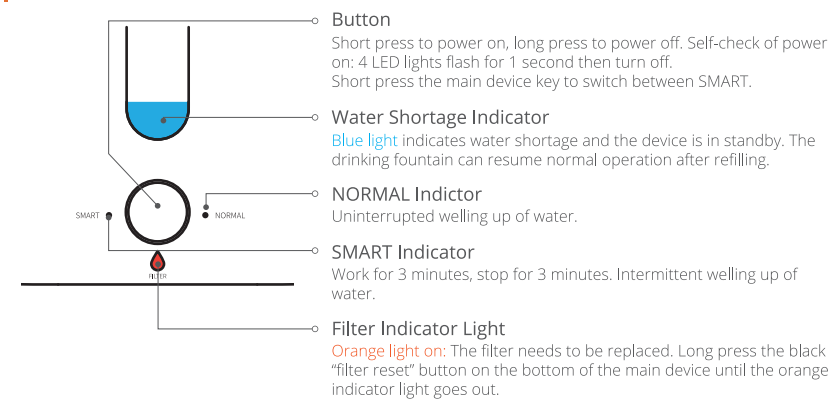
7

PRODUCT USE



8

EXPLANATION



9

BASIC PARAMETERS

| | |
|-------------------------|---|
| Product name | PETKIT EVERSWEET 2S Smart Pet Drinking Fountain |
| Product model | P4101 |
| Overall size | 180mm X 180mm X 155mm |
| Recommended pet types | Cats and medium-sized and small-sized dogs |
| Complete machine weight | 1.03kg (includ USB power cord, filter) |
| Rated voltage | 5VDC |
| Rated power | 2W |

MAINTENANCE AND CLEANING

- I. Cleaning and maintenance of water storage barrel**
 - The water temperature of the complete device is between 0 degrees Celsius and 50 degrees Celsius.
 - Do not expose it in the sun, so as not to accelerate the yellowing and brittleness of the machine.
 - Please clean the complete device after disconnecting the power supply, and please ensure that the bottom of the connector is dry.
 - Please clean the inner barrel in a large-capacity container such as a sink to prevent water from spilling.
 - DO NOT use petrol, kerosene, polishing powder, bleach and other chemical reagents to clean the device.
 - The drinking fountain and the water pump cannot be soaked in boiling water.
 - For daily maintenance, wipe the surface of the device or power cord to remove stains with a soft cloth rinsed with warm water. (Please remove the power first).
 - It is recommended to completely replace the drinking water for 3-4 days. When replacing, please clean the washable parts.
 - When not used for a long time, please clean the device, and put the parts into the packing box in the original packaging order after dry, and store them properly in a dry place.
- II. The replacement of filter element**
 - The filter shall be replaced every 60 days or so in smart mode (SMART), and every 30 days or so in normal mode (NORMAL). (Specific replacement shall be subject to the filter indicator light.)
 - Soak the new filter thoroughly (it's recommended to soak twice, five minutes each time) and rinse slightly before replacing.
 - For the health of pets, please replace the filter frequently according to the use of the filter.
- III. Cleaning of the CNC silent pump**
The CNC silent pump shall be cleaned every week to prevent dirt from clogging the waterway, resulting in abnormalities such as poor water quality and poor water discharge.
- IV. About the filter**
 - A little black powder floating in the water: A little of non-toxic and harmless coconut shell activated carbon used for PETKIT filter will float out with the water flow, which is a normal phenomena. Please feel free to use.
 - A "click" sound of the pump in use: Due to the circulation of water flow, the coconut shell activated carbon floating in the water may be absorbed by the pump. Please check and clean up in time.

10