

正面

EVERSWEET 2S
INSTRUCTION MANUAL

PARTS LIST

Drinking tray X 1

Outlet pipe X 1

Filter X 1

USB power cord (1.5 meters) X 1

Outer barrel X 1

Inner barrel X 1

Filter tray X 1

User Notice	1
Safety Instructions	1
Parts List	2
Product Introduction	3, 4, 5
Product Use	6, 7, 8
Explanation	9
Basic Parameters	9
Maintenance and Cleaning	10

Main Device

The water capacity cannot exceed the maximum water level MAX

Inner Barrel

Water Level Window

Button
Short press: Power on Short press to switch mode after powering on. Long press for 5 seconds: Power off

SMART MODE INDICATOR LIGHT
White light

NORMAL MODE INDICATOR LIGHT
White light

FILTER STATUS INDICATOR LIGHT
Orange light indicates that the filter needs to be replaced

- * Failure to comply with the below warnings may lead to equipment malfunction or other safety concerns.
- Please install and use the device in strict accordance with the manual.
- This device is NOT RECOMMENDED for pets within three months of age.
- Please use the device indoors.
- This device is at low voltage mode, but the pet biting of wires will still cause electric leakage. Please guide the pet to use properly.
- Please use the original USB power cord, otherwise it will damage the device or cause safety hazards.
- Keep the device placed horizontally, or DO NOT overturn it, otherwise it will work abnormally or spill water.
- DO NOT immerse or soak the bottom of the inner barrel and the outer barrel of the product in water.
- If the product is not used for a long period of time or is moved, please remove batteries and unplug the power cord.
- If children use this device, be sure to use it under the guidance of adults.
- To avoid accidental injury, no one except for the maintenance personnel can repair this product.
- Be sure to check the remaining water in the drinking fountain before taking your vacation.
- Please contact customer service in time if you have any problem when using this product.

Interior of the Inner Barrel of the Main Device

CNC Silent Pump

Make sure to align v it with the hold down groove at the bottom of the inner barrel. (*direction as shown in the figure)

Detachable Waterproof Connector

ULTRA Pump Wire

Please do not drag it forcefully

Interior of the Outer Barrel of the Main Device

Main Device Metal Dome

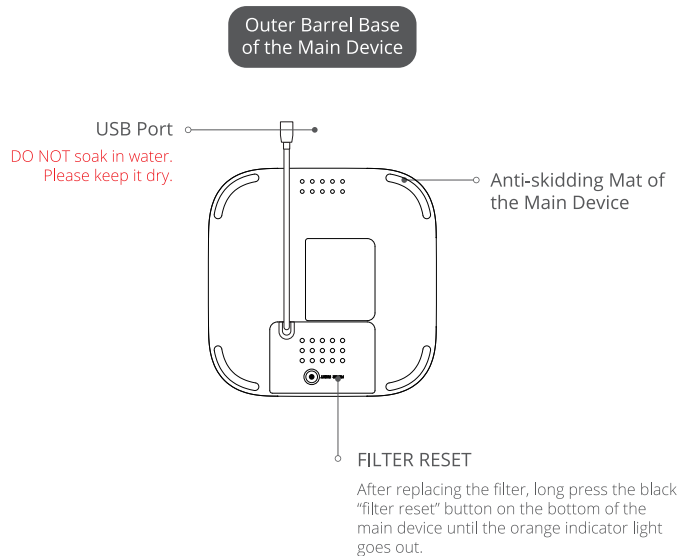
Please keep dry Do not immerse them in water

Water Shortage Indicator Light

The diagram illustrates the internal components of the main device, divided into two sections. The top section shows the interior of the inner barrel, which contains a CNC Silent Pump, a Detachable Waterproof Connector, and a ULTRA Pump Wire. A note indicates that the pump should be aligned with a hold-down groove at the bottom of the inner barrel. The bottom section shows the interior of the outer barrel, which contains a Main Device Metal Dome and a Water Shortage Indicator Light. A note advises keeping the metal dome dry and not immersing it in water.

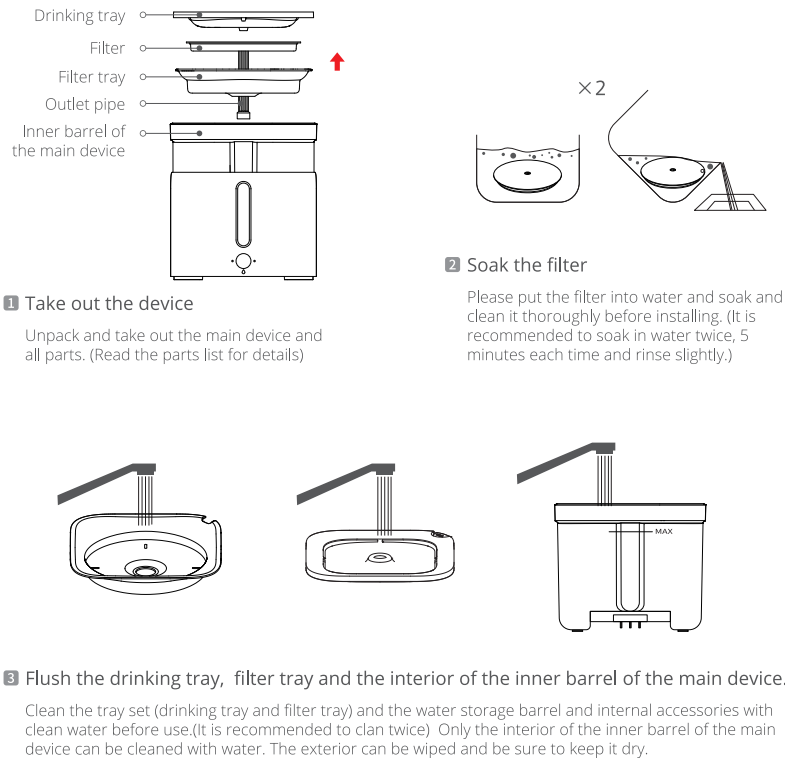
4

PRODUCT INTRODUCTION



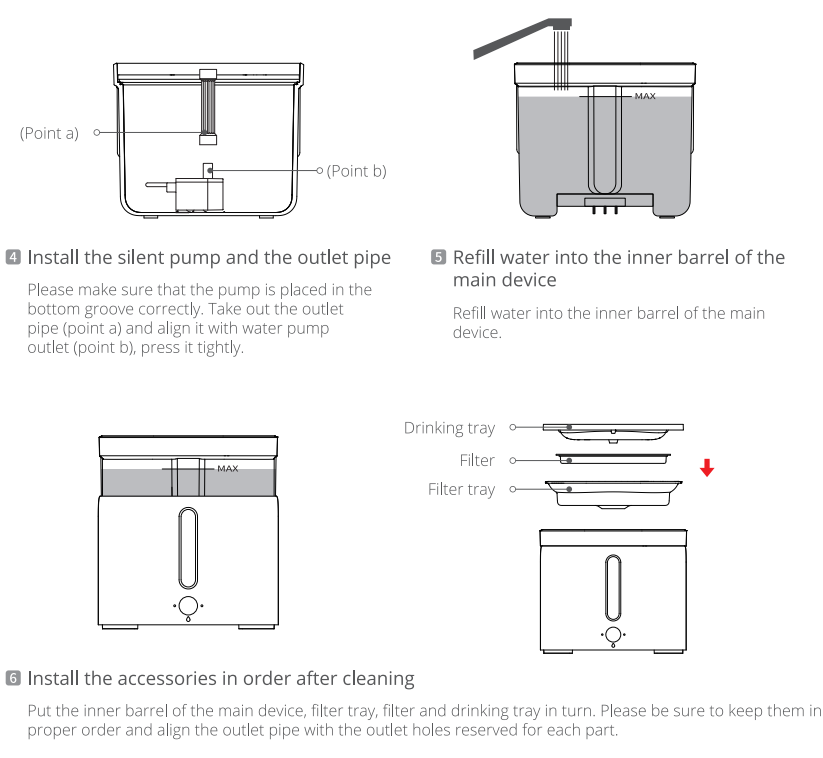
5

PRODUCT USE



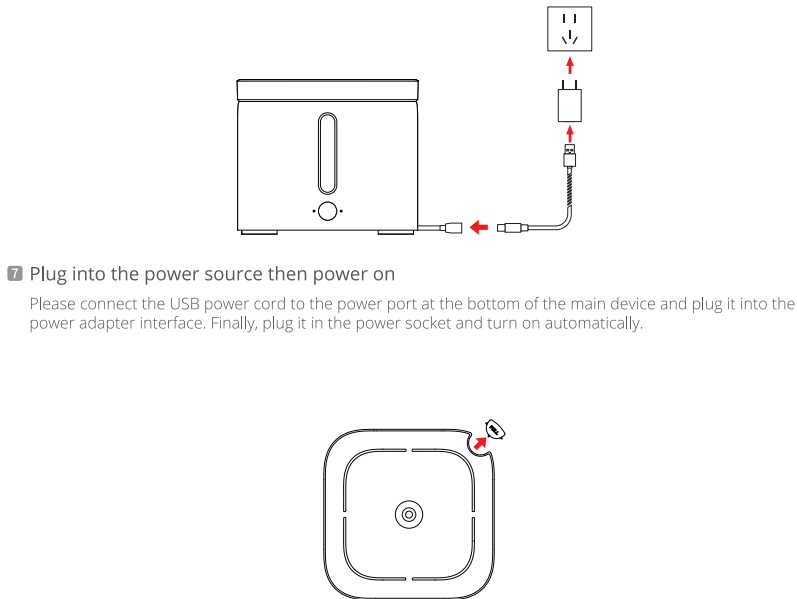
6

PRODUCT USE



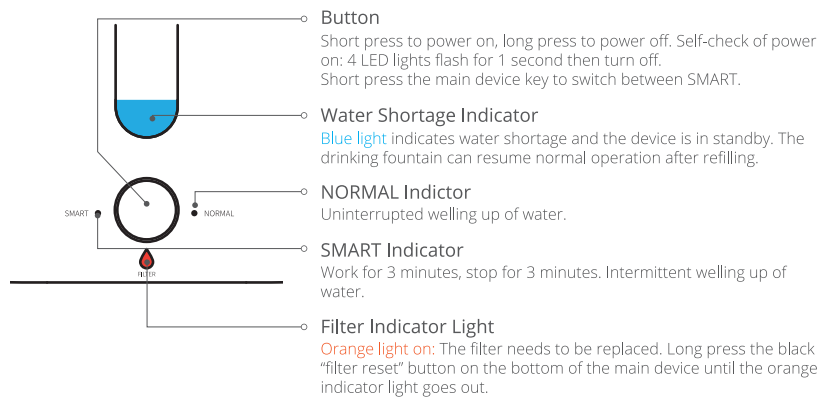
7

PRODUCT USE



8

EXPLANATION



9

BASIC PARAMETERS

Product name	PETKIT EVERSWEET 2S Smart Pet Drinking Fountain
Product model	P4101
Overall size	180mm X 180mm X 155mm
Recommended pet types	Cats and medium-sized and small-sized dogs
Complete machine weight	1.03kg (inclund USB power cord, filter)
Rated voltage	5VDC
Rated power	2W

MAINTENANCE AND CLEANING

- I. Cleaning and maintenance of water storage barrel
1. The water temperature of the complete device is between 0 degrees Celsius and 50 degrees Celsius.
 2. Do not expose it in the sun, so as not to accelerate the yellowing and brittleness of the machine.
 3. Please clean the complete device after disconnecting the power supply, and please ensure that the bottom of the connector is dry.
 4. Please clean the inner barrel in a large-capacity container such as a sink to prevent water from spilling.
 5. DO NOT use petrol, kerosene, polishing powder, bleach and other chemical reagents to clean the device.
 6. The drinking fountain and the water pump cannot be soaked in boiling water.
 7. For daily maintenance, wipe the surface of the device or power cord to remove stains with a soft cloth rinsed with warm water.(Please remove the power first).
 8. It is recommended to completely replace the drinking water for 3-4 days. When replacing, please clean the washable parts.
 9. When not used for a long time, please clean the device, and put the parts into the packing box in the original packaging order after dry, and store them properly in a dry place.
- II. The replacement of filter element
1. The filter shall be replaced every 60 days or so in smart mode (SMART), and every 30 days or so in normal mode (NORMAL). (Specific replacement shall be subject to the filter indicator light.)
 2. Soak the new filter thoroughly (it's recommended to soak twice, five minutes each time) and rinse slightly before replacing.
 3. For the health of pets, please replace the filter frequently according to the use of the filter.

- III. Cleaning of the CNC silent pump
- The CNC silent pump shall be cleaned every week to prevent dirt from clogging the waterway, resulting in abnormalities such as poor water quality and poor water discharge.
- IV. About the filter
1. A little black powder floating in the water: A little of non-toxic and harmless coconut shell activated carbon used for PETKIT filter will float out with the water flow, which is a normal phenomena. Please feel free to use.
 2. A "click" sound of the pump in use: Due to the circulation of water flow, the coconut shell activated carbon floating in the water may be absorbed by the pump. Please check and clean up in time.

10

The device has been approved for use in EU countries and is therefore provided with the **CE mark**. All necessary documentation is available on the website: www.electric-collars.com
Changes to technical parameters, properties and printing errors reserved.

Service center and distribution

Reedog, sro

Sedmidomky 459/8 101

00 Prague 10

Phone: +1 646 980 4569

Email: info@electric-collars.eu