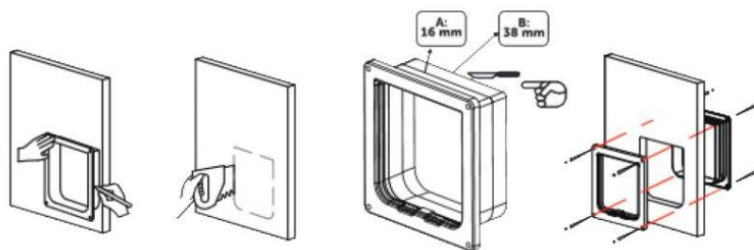


Installation of doors for dogs and cats

Prepare:

- Electric or manual saw
- Phillips screwdriver
- Drill
- Ruler and pencil
- Spirit level
- Door with installation material

1. Measure the height of the dog/cat (the bottom of the door should extend to the beginning of the chest)
2. Attach the front side to the place where you want to place the door of the door and outline the opening from the outside
3. Cut the opening according to the drawing
4. Insert the front and back of the door
5. If necessary, you can adjust the width of the tunnel using the marked lines
6. Connect the two parts with the included screws and put on the blanking plugs



The device has been approved for use in EU countries and is therefore provided with the **CE mark**. All necessary documentation is available on the website: www.electric-collars.com
Changes to technical parameters, properties and printing errors reserved.

Service center and distribution

Reedog, sro

Sedmidomky 459/8 101

00 Prague 10

Phone: +1 646 980 4569

Email: info@electric-collars.eu