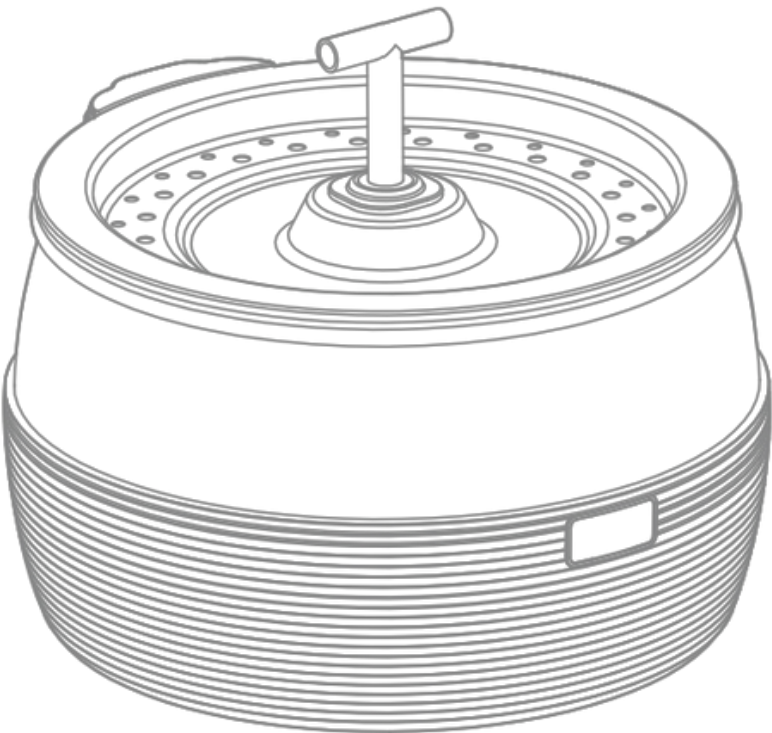


# Stainless steel fountain PWS 107



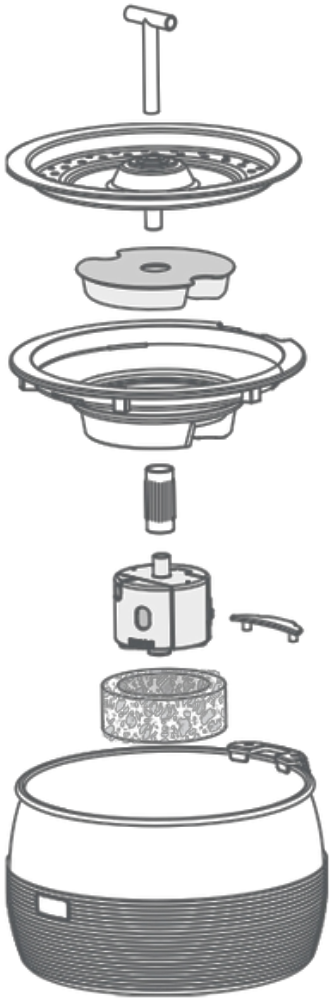
Thank you for supporting us.  
To ensure a continuous supply of fresh, clean water for your pet, read the instructions carefully. If you experience any problems, complaints or support during use, please contact us in time to help you resolve the issue

**1. Attention:**  
Maintain the water level.  
The pump is designed to operate in water depths of at least 2.5 cm

Clean it regularly, at least every 2 weeks.

Change the filter regularly.  
Change the carbon filter every 4 weeks. Replace the foam filter every 2 months.

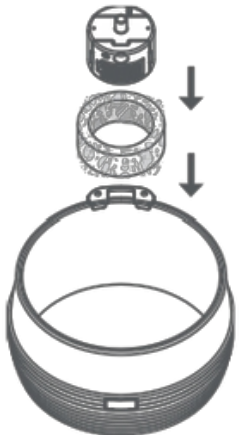
## 2. Detail:



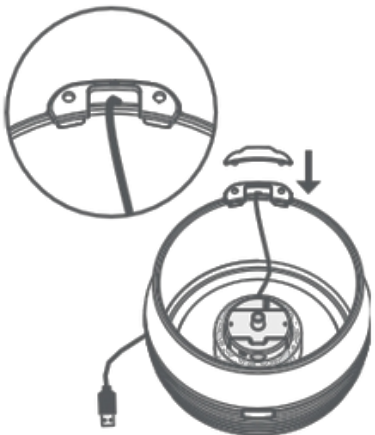
Dongguan Dirui Electronic Technology Co. LTD  
Address: 5/F, Building G, Tailian Science and Technology  
Park, Chang'an Town, Dongguan, Guangdong, China

## 3. Installation:

### 1 Install the foam filter and pump:



Insert the pump into the foam filter and slide both into the round bowl. Press them down so that the suction cups snap in to place.

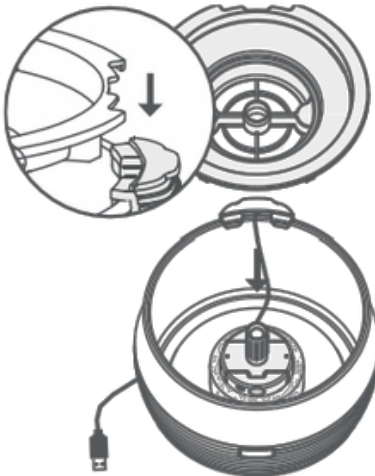


Insert the USB cable down into the hole in the holder and out through the notches on the bottom of the holder. Replace the cable cap that holds the cable in place.

### Install the drain pipe and filter bath



Align the outlet pipe with the water pump outlet and press it firmly.

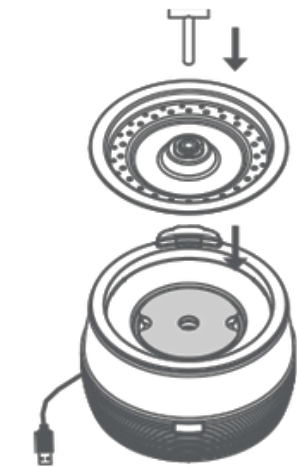
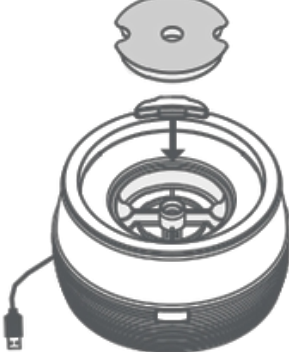


Align the notch and install the filter tray.

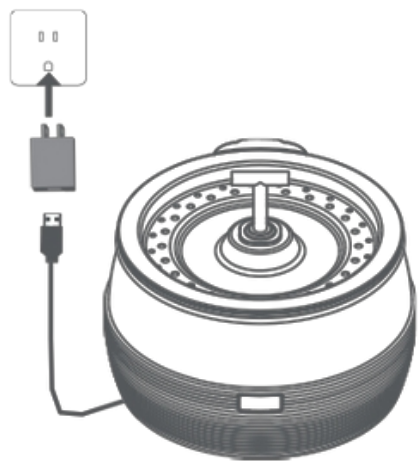
### Install the filter, lid and accessories for the fountain.



Soak the filter for 5 minutes in a clean container.



Gradually install the lid, T-tap.



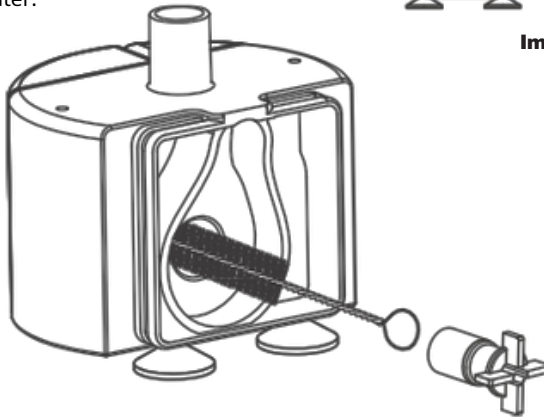
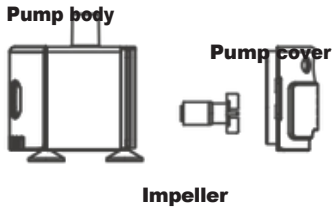
Connect the power adapter.



Place the fountain where your pet will use it. Fill the bowl with water, leaving half an inch of space between the water and the rim. Make sure your hands, the cord and the power adapter are dry, then plug the fountain into a wall outlet.

## 4. Cleaning

1. Remove the pump cover
2. Wash the filter with soap and warm water
3. Remove the impeller and clean the parts with soap and warm water.



### Notice

1. Remember to turn off and disconnect the power for safety reasons when the equipment is not in use.
2. The power adapter and the wired plug must not be soaked during cleaning.
3. This product must not be operated without water.
4. Disconnect the power supply before servicing and cleaning the machine.

The device has been approved for use in EU countries and is therefore CE-marked. All necessary documentation is available on the website: [www.electric-collars.com](http://www.electric-collars.com) Changes to technical parameters, features, and printing errors are subject to change

Reedog Service Centre and Distribution, s.r.o.  
Sedmidomky 459/8  
101 00 Prague 10  
Tel: +1 646 980 4569  
Email: [info@electric-collars.eu](mailto:info@electric-collars.eu)