



# iDig Stay

## PRODUCT MANUAL

  
v2.0 | ENGLISH



ALWAYS READ, UNDERSTAND AND FOLLOW ALL WARNINGS AND INSTRUCTIONS FOR YOUR IDIG STAY BEFORE USE. KEEP FOR FUTURE REFERENCE.

# IMPORTANT SAFETY INFORMATION

**The user must read and understand these Instructions and the Warranty before using the product.**

Set up is the end user's responsibility and beyond the control of iFetch, LLC. Therefore, iFetch exclusively limits its Warranty to the repair or replacement of a defective product. Damage to your home, your property, or any person or pet is excluded.



Your iDig Stay must be inspected for signs of wear, damage and fatigue before each use. If damaged, do not use.



This product is only intended for recreational use for your pet. **Your iDig Stay is NOT a child's toy.**

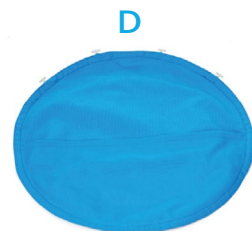


Do not attempt to modify your iDig Stay or any of the system components.

Review all Warnings, Instructions, and Warranty information carefully. Failure to follow these warnings and instructions will void the Warranty.

**Call iFetch at (512) 219-3271 or visit [goifetch.com](http://goifetch.com),**  
if you have any questions regarding the use of your iDig Stay.

# PARTS LIST



PART	DESCRIPTION
A	One (1) Base
B	One (1) Paw Flap
C	One (1) Scratch Flap
D	One (1) Hide Flap

## TO PLAY

1. Remove iDig Stay from packaging.
2. Set on flat playing surface.
3. Load flaps with your dog's favorite toys and/or treats (starting with the bottom flap first and working up to the top).
4. Fold all of the flaps back on top of each other.
5. Encourage your dog to "find it" and scratch on the top flap to encourage play.
6. Repeat, repeat, repeat!

### WARNING

- **DO NOT** attempt to modify your iDig Stay or any of its components.
- **DO NOT** allow dog to chew on plastic toggles that are used to attach the flaps to the base. If your dog detaches part of the flap, replace the toggle inside the base or remove the flap for them to get to the others.

# TIPS & TRAINING

## Introducing your dog to the iDig Stay

When you're loading toys and treats into the toy, call your dog over so they can see what you're doing and know what you're hiding. Have them "sit" and "stay" next to the iDig and give them lots of praise for being so patient.

We recommend moving the iDig Stay to places where your dog is already digging. Try placing it in your closet if they dig in your clothes, next to the couch if they dig in the cushions, or outside if they dig in the yard. Then, train and reward them to dig in the iDig Stay instead.

## Encouraging your dog to dig and play

After you've loaded the iDig, encourage your dog to "find it" or "go get it" in an excited voice. Pat or scratch on the flaps to get them going.

Be positive and patient. Not all dogs will "get it" and start digging immediately. Sniffing and foraging should be encouraged, especially at first. Just the act of your dog thinking about where to find the hidden treasure is great mental stimulation. This will tire them out just as much as digging.

## Mixing it up

If you have a clever dog that masters the hiding places, try rotating the flap order to give them a new challenge. Or hide smaller items that aren't as easy to retrieve from the flaps like smaller treats or kibble.

# FREQUENTLY ASKED QUESTIONS

## What kinds of things can I hide in my iDig Stay?

The iDig Stay flaps feature pockets big and small so you can hide anything from your dog's kibble, to an old shirt or a medium plush toy inside the Stay. If your dog has a tendency to eat too fast, you can hide his or her dinner inside the flaps of the iDig Stay. Some of our iDig owners hide their socks or other items with their scent inside the flaps when they leave home, so their dog can search and find their scent while they're away.

## Are the toggles on the flaps ok for the washing machine?

Yes! The toggles are made of high-grade, durable plastic that are safe for washing machines. (We recommend washing with cold water.) We do NOT recommend drying them in a dryer. Simply hang dry or lay flat to dry. The canvas material of the flaps will dry in a few hours.

## Are there any safety precautions I should know about?

Please encourage your dog to dig enthusiastically, but not destructively. Teach them the goal is to find the reward, not to scratch, bite, and tear until the flap is destroyed. Also, do not let your dog chew on the toggles on the flaps if they are able to detach some or all of the toggles from the base. If they chew the toggles, the flap will not attach to the base anymore, and although the toggles are small, we do not want your dog to choke on them.

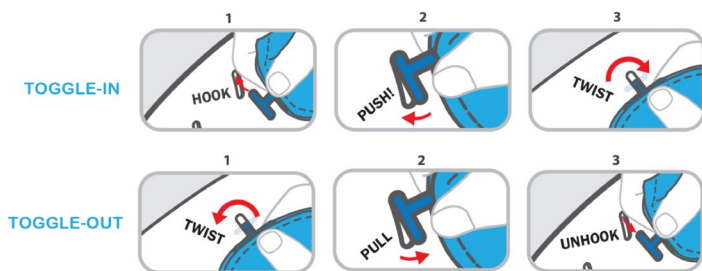
For more FAQs, visit [goifetch.com](https://goifetch.com).



# MAINTENANCE & CLEANING

**When you're ready to wash the flaps (or change their position), simply remove the flaps from the base of the iDig Stay and load them into the washer. Here's how to remove the flaps:**

- Grasp the plastic toggle on the edge of the flaps with your thumb and index finger.
- Twist to a 90 degree angle.
- Pull the toggle out of the hole in the side of the base to unhook.
- Repeat the same for all toggles until the flap is loose from the base. Once the flaps are removed, wipe out the base of the iDig Stay with a damp cloth to remove food or dirt.



## WHEN WASHING THE FLAPS



**TIP:** Go to [goifetch.com/products/idig/](https://goifetch.com/products/idig/) to watch an instructional video on how to assemble and disassemble your iDig Stay.

**Once the flaps are washed, follow the same instructions for re-attaching them to the base:**

- Insert flaps one at a time, starting with a row of holes at or towards the bottom of the base.
- Grasp a plastic toggle on the edge of the flap with your thumb and index finger, keeping the toggle vertical.
- Insert or "hook" it into the hole on the side of the iDig Stay base.
- Twist so the toggle is horizontal and secure.
- Repeat with the other toggles until the flap is attached.
- Repeat with the other two flaps until the toy is fully assembled.

**TIP:** Make sure you are lining up the holes along the base as you hook the toggles so that the flap will lay straight.



# WARRANTY

**US customers who purchased from authorized sellers in the US have a one-year manufacturer's warranty as detailed below. The warranty will be void if the product is taken outside of the US.**

Customers in other countries who purchased from authorized sellers in their country should contact the local International Distributor for warranty information. [Links to International Distributors can be found here.](#)

If you have any question about your warranty coverage, please feel free to contact iFetch via email at [support@goifetch.com](mailto:support@goifetch.com).

iFetch products come with a one-year warranty covering manufacturer's defects, assuming normal use. Defective products returned to iFetch may be sent either shipping prepaid or, if pre-approved by iFetch, via UPS ground transportation with shipping paid by iFetch. To honor the warranty, iFetch, at its option, will repair the defective product or replace the defective product with a new or refurbished unit.

**Before iFetch will honor a warranty claim, the customer must:**

- provide proof of purchase,
- obtain a Return Merchandise Authorization (RMA) Number by contacting iFetch at: [support@goifetch.com](mailto:support@goifetch.com) or 512-219-3271.

**The warranty is void if:**

- the product is purchased and/or taken outside of the United States,
- the product was misused, or
- the product was not purchased from an authorized seller.

iFetch's sole obligation under this express product warranty shall be, at iFetch's option and expense, to repair the defective product, deliver to the customer an equivalent product to replace the defective product, or if neither of the two foregoing options are reasonably available, iFetch may refund to the customer the purchase price paid for the defective product. All products that are replaced will become the property of iFetch. Replacement products may be new or reconditioned. iFetch warrants any replaced or repaired product for ninety days (90) days from shipment, or the remainder of the initial warranty period, whichever is longer. Defective products returned to iFetch must be packaged appropriately for safe shipment. It is recommended that the shipment be insured or sent by a method that provides for tracking of the package. iFetch is not responsible for loss or damage during shipment to iFetch. The repaired or replaced item will be shipped to the customer, at iFetch's expense, not later than thirty (30) days after iFetch receives the defective product, and iFetch will retain risk of loss or damage until the item is delivered to the customer.

# WARRANTY (CONTINUED)

## WARRANTY EXCLUSIONS:

iFetch will not be liable under this limited warranty if its testing and examination disclose that the alleged defect or malfunction in the product does not exist or resulted from:

- Failure to follow iFetch's operation and maintenance instructions;
- Unauthorized product alteration;
- Weather conditions;
- Damage to the product caused by any animal;
- Abuse, misuse, negligent acts or omissions of the customer and/or persons under the customer's control; or
- Acts of third parties, acts of God, accident, fire, or other hazards.

## WARRANTY EXCLUSIVE:

IF AN IFETCH PRODUCT DOES NOT FUNCTION AS WARRANTED ABOVE, CUSTOMER'S SOLE REMEDY FOR BREACH OF THAT WARRANTY SHALL BE REPAIR, REPLACEMENT, OR REFUND OF THE PURCHASE PRICE PAID, AT IFETCH'S OPTION. TO THE FULLEST EXTENT ALLOWED BY LAW, THE FOREGOING WARRANTIES, TERMS, OR CONDITIONS, EXPRESS OR IMPLIED, EITHER IN FACT OR BY OPERATION OF LAW, STATUTORY OR OTHERWISE, INCLUDING WARRANTIES, TERMS, OR CONDITIONS OF MERCHANTABILITY, FITNESS FOR A PARTICULAR PURPOSE, AND SATISFACTORY QUALITY, ALL OF WHICH ARE EXPRESSLY DISCLAIMED. IFETCH NEITHER ASSUMES NOR AUTHORIZES ANY OTHER PERSON TO ASSUME FOR IT ANY OTHER LIABILITY IN CONNECTION WITH THE SALE, MAINTENANCE OR USE OF ITS PRODUCTS.

## LIMITATION OF LIABILITY:

CUSTOMER ASSUMES ALL RISKS AND LIABILITIES FROM THE USE OR MISUSE OF THIS PRODUCT. TO THE FULLEST EXTENT ALLOWED BY LAW, IFETCH EXCLUDES FOR ITSELF AND ITS SUPPLIERS ANY LIABILITY, WHETHER BASED IN CONTRACT OR TORT (INCLUDING NEGLIGENCE), FOR INCIDENTAL, CONSEQUENTIAL, INDIRECT, SPECIAL, OR PUNITIVE DAMAGES OF ANY KIND, OR FOR LOSS OF REVENUE OR PROFITS, OR FOR ANY INJURY TO OR DEATH OF AN ANIMAL OR PERSON, ARISING OUT OF OR IN CONNECTION WITH THE SALE, MAINTENANCE OR USE OF ITS PRODUCTS, EVEN IF IFETCH OR ITS AUTHORIZED RESELLER HAS BEEN ADVISED OF THE POSSIBILITY OF SUCH DAMAGES. IFETCH'S SOLE LIABILITY SHALL BE LIMITED TO THE REPAIR, REPLACEMENT, OR REFUND OF THE PURCHASE PRICE PAID FOR THE PRODUCT, AT IFETCH'S OPTION. THIS DISCLAIMER OF LIABILITY FOR DAMAGES WILL NOT BE AFFECTED IF ANY REMEDY PROVIDED HEREIN SHALL FAIL OF ITS ESSENTIAL PURPOSE.

## DISCLAIMER:

SOME COUNTRIES, STATES, OR PROVINCES DO NOT ALLOW THE EXCLUSION OR LIMITATION OF IMPLIED WARRANTIES OR THE LIMITATION OF INCIDENTAL OR CONSEQUENTIAL DAMAGES FOR CERTAIN PRODUCTS SUPPLIED TO CONSUMERS OR THE LIMITATION OF LIABILITY FOR PERSONAL INJURY, SO THE ABOVE LIMITATIONS AND EXCLUSIONS MAY BE LIMITED IN THE APPLICATION TO YOU. WHEN THE IMPLIED WARRANTIES ARE NOT ALLOWED TO BE EXCLUDED IN THEIR ENTIRETY, THEY WILL BE LIMITED TO THE DURATION OF THE APPLICABLE WRITTEN WARRANTY. THIS LIMITED WARRANTY & LIMITATION OF LIABILITY GIVES YOU SPECIFIC LEGAL RIGHTS WHICH MAY VARY DEPENDING ON LOCAL LAW.

## GOVERNING LAW:

THIS LIMITED WARRANTY & LIMITATION OF LIABILITY SHALL BE GOVERNED BY THE LAWS OF THE STATE OF TEXAS, U.S.A., AND BY THE LAWS OF THE UNITED STATES, EXCLUDING THEIR CONFLICTS-OF-LAW PRINCIPLES. THE UNITED NATIONS CONVENTION ON CONTRACTS FOR THE INTERNATIONAL SALE OF GOODS IS HEREBY EXCLUDED IN ITS ENTIRETY FROM APPLICATION TO THIS LIMITED WARRANTY. ALL RIGHTS RESERVED UNDER INTERNATIONAL AND PAN-AMERICAN COPYRIGHT CONVENTIONS. DO NOT REMOVE (OR ALLOW ANYBODY ELSE TO REMOVE) ANY PRODUCT IDENTIFICATION, COPYRIGHT OR OTHER NOTICES.

# Also Available From iFetch

iFetch carries a full line of fetch toys, brain games, and digging toys. Check out [goifetch.com](https://goifetch.com) to learn more and shop now.



## iFetch

Your small dog might also enjoy the iFetch ball launcher! The iFetch launches a mini tennis ball (1.5" diameter) 10, 20, or 30 feet. It can be plugged in or used with six C-cell batteries.



## iFetch Too

The iFetch Too launches a standard-sized tennis ball 10, 25, and 40 feet! It features a built-in rechargeable battery and is great for larger breeds.



## iFetch Frenzy

The iFetch Frenzy is a fast-paced, non-electronic brain game for small to medium-sized dogs. Your dog places the mini tennis ball into the top of the toy, and then scrambles to fetch the ball as it rolls out of one of three chutes at the bottom.



## iDig Go

The iDig Go is a fabric, pop-up version of the iDig Stay. Hide your dog's favorite toys or treats in the three flaps and watch them dig for the treasure. Folds up for easy storage.





iFetch was founded in 2013 by a grandfather, Denny Hamill, and his teenage grandson, Grant. They invented the iFetch ball launcher in their garage, spurred on by their dog Prancer's relentless quest for a full-time fetch partner. Fast forward several years later, and iFetch is still a family affair. "Bapa" Denny is CEO, his daughter Debbie runs marketing and operations, and Grant works full-time on sales and customer service. Our sincere thanks for supporting our independent, small business!



## We'd love to hear from you!



512.219.3271



support@goifetch.com



goifetch.com

## Join the pack!

If you love your iFetch products, please leave us a review.  
Your positive feedback helps our small business grow.



@goiFetch



iFetch

[goiFetch.com](http://goiFetch.com)

The device has been approved for use in EU countries and is therefore provided with the **CE mark**. All necessary documentation is available on the website: [www.electric-collars.com](http://www.electric-collars.com)  
Changes to technical parameters, properties and printing errors reserved.

**Service center and distribution**

Reedog, sro

Sedmidomky 459/8 101

00 Prague 10

Phone: +1 646 980 4569

Email: [info@electric-collars.eu](mailto:info@electric-collars.eu)