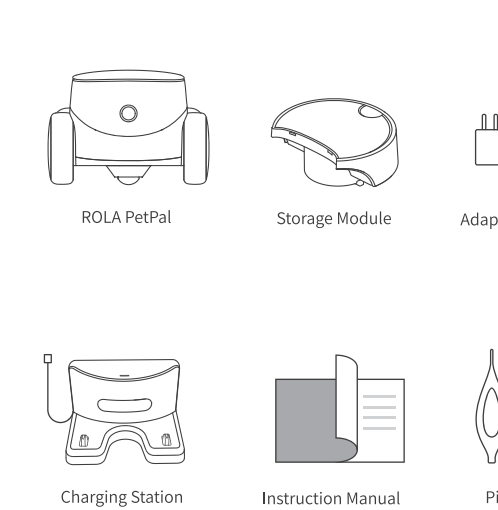


Safety Information

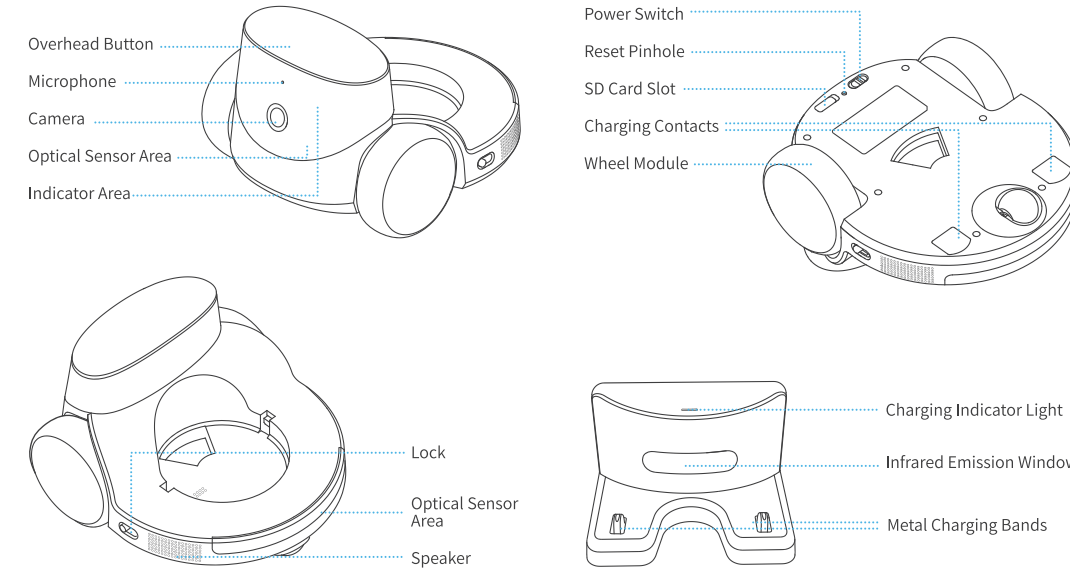
Please read the following safety instructions carefully and take normal safety precautions before using this product.

1. Only authorized technicians can disassemble the product. Users should not try this themselves.
2. Remove the protective film from the product before use to ensure normal operation of the robot.
3. To avoid damage from falling, do not place the robot in places where it may fall, such as tables, coffee tables, TV cabinets, etc.
4. Do not use the robot in an environment with open flames, fragile items, or flammable items.
5. Do not drop or kick the product.
6. Avoid using the product on wet floors, such as bathrooms or near kitchen sinks.
7. Only use the product in an environment with the temperature between -10°C and 45°C.
8. Ensure that the Wi-Fi signal covers the product's range of activity.
9. Avoid excessively bending wires and placing heavy or sharp objects on the product.
10. Do not let pets bite the product's wires, as it may cause pet safety hazards.
11. Any operation inconsistent with the instructions may cause damage to the product.
12. The main unit of this product cannot be immersed or soaked in water.

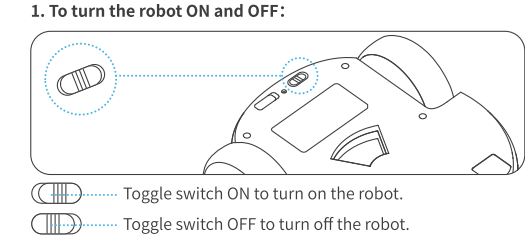
Packaging



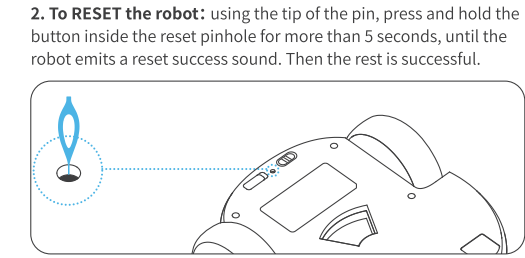
Product Introduction



Robot Usage Instructions

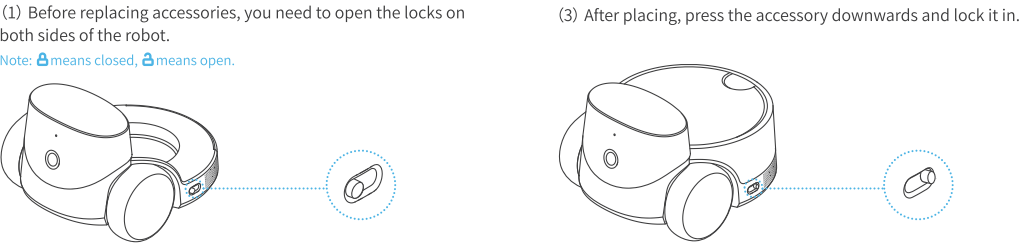


- 1. To turn the robot ON and OFF:**
- Toggle switch ON to turn on the robot.
 - Toggle switch OFF to turn off the robot.

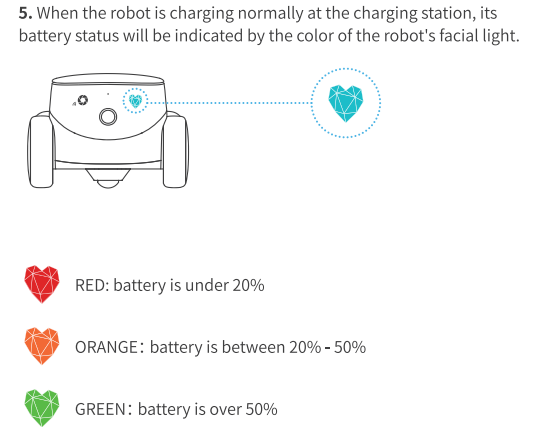
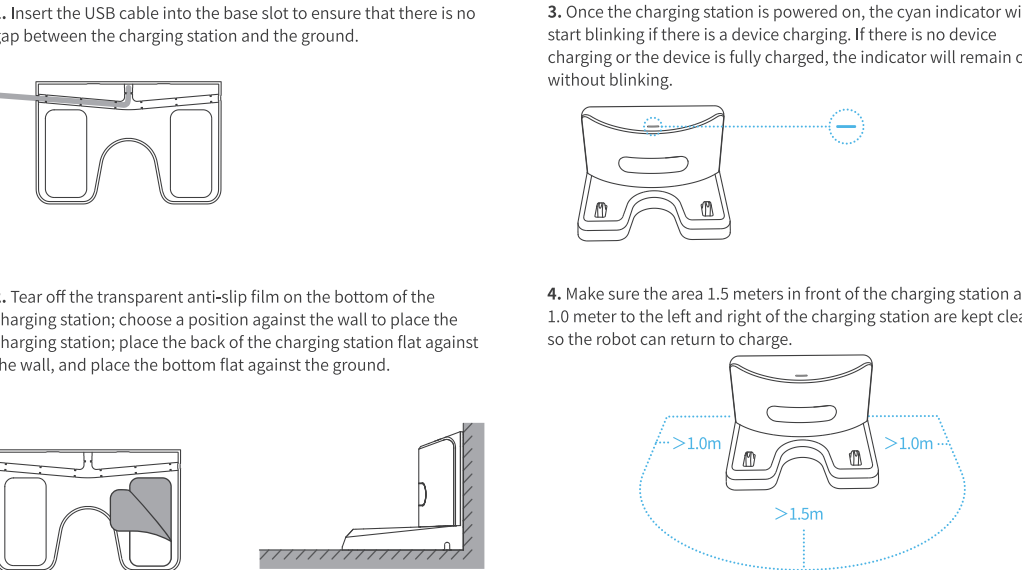


- 2. To RESET the robot:** using the tip of the pin, press and hold the button inside the reset pinhole for more than 5 seconds, until the robot emits a reset success sound. Then the reset is successful.
- 3. By pressing the mechanical button on the robot's head:** you can call the owner in the App.

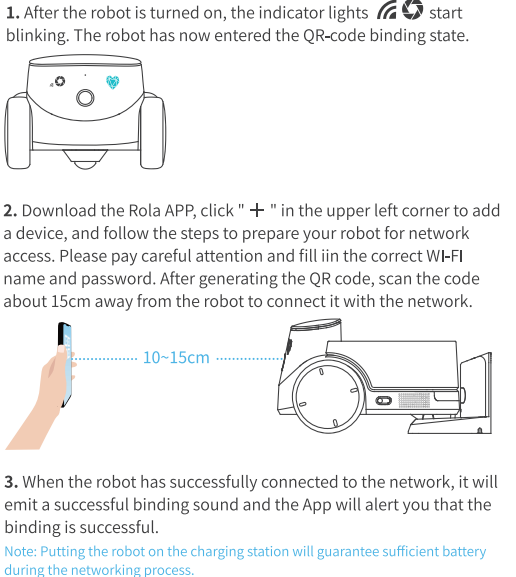
4. Robot Accessories Replacement :



Charging Station Instructions



Robot Networking Instructions



Robot Specifications and Parameters

| | | | |
|---------------------------|---|---|---|
| Product Name | ROLA Pet Companion Robot | Operating Noise | In an environment of 44.7 decibels, the machine speed is modulated by 70 and the decibel meter is placed within 30cm of the robot. The operating noise fluctuates between 56.4 db and 63.7 db |
| Product Model | ROLA PetPal | Recharge Method | Infrared |
| Product Size | 192×171.3×120mm | Battery Capacity | 3500mAh |
| Product Weight | Weight of ROLA Petpal Pro: 525g Weight of Storage Module: 180g Weight of Charging Station: 141g Weight of Pet Teasing Module: 254g Weight of Feeding Module: 360g | Charging Time | 2.5h |
| Material | ABS+PC | Battery Life | 2h - 8h |
| Resolution | 2.5K | Adapter Power Rating | 10W |
| Camera Angle | 135° | Robot Power Rating | 1.2W (the device is successfully connected to the Internet and the camera is not turned on) |
| Night Vision Function | Supported | Extended Memory Support | 16G - 256G |
| Speaker | 2W | File Format | MP4 |
| Roaming Speed | 1.5m/s | Does the robot support replacement modules? | Yes |
| Motor Type | Brushed gear motor | | |
| Obstacle Clearance Height | 15° | | |
| | 15mm | | |

Legal Statement

1. Before using the product, please read this document and keep it for reference.
2. The illustrations and descriptions in this document are for reference only, and the actual product should take precedence. For certain specifications and configurations, please check the relevant specification documents or consult the seller.
3. The nominal storage capacity and technical performance indicators are only specifications. Actual data may vary depending on the environment and settings, etc. Factors vary.
4. If you use other products or software, you are solely responsible for compatibility and legality.
5. No content in this document shall constitute a modification of Enabot's product warranty policy.
6. This product is not designed for organ transplantation or other life support system applications. In such applications, product failure may result in personal injury or death.
7. No one may copy, delete, compile, store, transmit or translate this document without Enabot's authorization.



Scan the QR code above
Download the Rola APP