

NOTICE Please Read The User Manual Carefully Before Use and Keep It in A Safe Place!

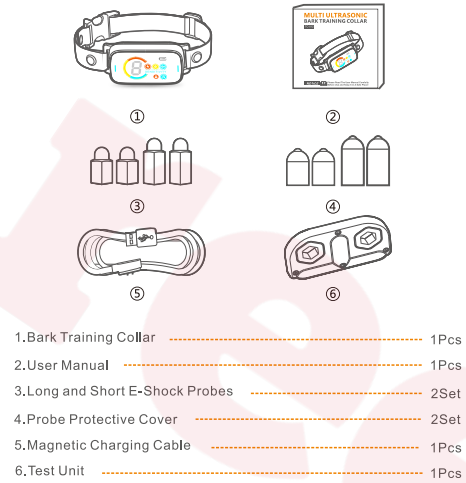
www.electric-collars.com / www.reedog.eu

1 Important Safety information

- Not suitable for aggressive dogs
- Keep product out of reach of children.
- Suitable for dogs over 6 months.
- Make sure dog is healthy before use.
- Dogs should not wear it for more than 12 hours a day.
- Remove the device before playing with the dog to avoid false triggers.
- The hair around the dog's neck can be cut appropriately.
- Examine the skin health of the shock zone on the dog's neck
- Do not touch contacts during E-shock.

www.electric-collars.com / www.reedog.eu

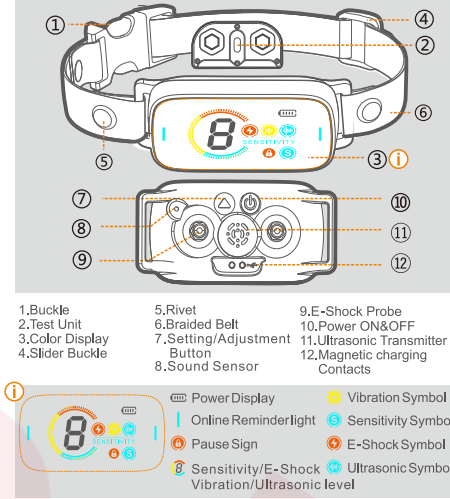
2 Packaging and Accessories



- 1. Bark Training Collar 1Pcs
- 2. User Manual 1Pcs
- 3. Long and Short E-Shock Probes 2Set
- 4. Probe Protective Cover 2Set
- 5. Magnetic Charging Cable 1Pcs
- 6. Test Unit 1Pcs

www.electric-collars.com / www.reedog.eu

3 Product Composition

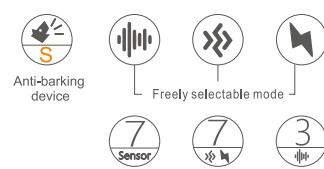


- 1. Buckle
- 2. Test Unit
- 3. Color Display
- 4. Slider Buckle
- 5. Rivet
- 6. Braided Belt
- 7. Setting/Adjustment Button
- 8. Sound Sensor
- 9. E-Shock Probe
- 10. Power ON/OFF
- 11. Ultrasonic Transmitter
- 12. Magnetic charging Contacts

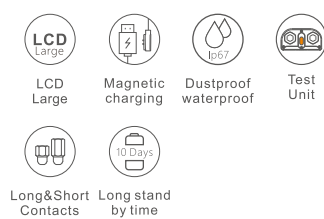
www.electric-collars.com / www.reedog.eu

4 Features

Features for dogs



Features for people



www.electric-collars.com / www.reedog.eu

5 Main function introduction

5A. Trigger

- Sound sensor
- Sensitivity level 1~7, the default value is 5.

5B. Training Method

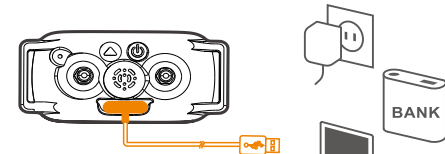
- Vibration: 0~7 level, 0 is off default level 6
- E-Shock: 0~7 level, 0 is off default level 3
- Ultrasound: 3 frequency points, 0 is off a: 25K, b: 24/26K, c: 24/25/26K
- Protection mode: Execute 5 times in a row, pause for 60 seconds.

6 Product Testing

6A. Charge the product before use

- NOTICE**
- 1. Do not use a charger with an output voltage exceeding 5V.
- 2. The magnetic charging cable in the package must be used, and other magnetic charging cables may not be able to charge.
- 3. The product design includes reverse charging protection and 20V overvoltage protection. In the state of overvoltage, it will stop charging and won't damage the product.

www.electric-collars.com / www.reedog.eu



Power display

- Charging**- Battery icon dynamic running water light. Turn off the screen after 60 seconds of inactivity.
- Fully charged**- Static full display of battery icon and "F". Shut down the screen after 60 seconds of inactivity, with a reminder every 10 seconds.
- Battery power warning**- Display flashing battery icon and "L", automatically shut down after flashing for 10 seconds.



- Charging**
- Fully charged**
- Battery power warning**

www.electric-collars.com / www.reedog.eu

TC-012

Basic Specifications

- Product name : Ultrasonic Pet Bark Stopper
- Product model : TC-012
- Working voltage: 3.7V
- Battery capacity: 300mAh
- Charging voltage: DC 5V/1A
- Waterproof grade: IP67
- Operating temperature: -10℃ ~ +50℃
- storage temperature: -20℃ ~ +60℃
- Product wight: 56g
- Product size: 76mm*37mm*30mm



www.electric-collars.com / www.reedog.eu

7 Operation and Settings

7A. Power on/off



- Long press the switch button "P" 2 seconds on/off

7B. Function settings

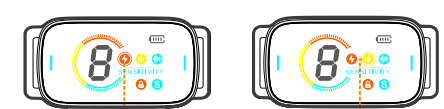


- a: In standby mode, click button "P" to light up the screen. Then short press the button "P" to select the function to set.



- b: When the outer rings of the E-Shock icon, vibration icon, ultrasonic icon, and sensitivity icon are flashing, short press "P" to adjust the function level.

www.electric-collars.com / www.reedog.eu



- The E-Shock is flashing, adjust the E-Shock level

- The vibration is flashing, adjust the vibration level

- Short press the "P" button to adjust the E-Shock level from 1-7. The 0 level means function closed.

- Short press the "P" button to adjust the vibration level from 1-7. The 0 level means function closed.



- The ultrasonic is flashing, adjust the type of ultrasonic.

- Sensitivity outer circle flashes, adjust sensitivity level.

- Short press the "P" key to select the ultrasound type from 1-3. The 0 level means function closed.

- Short press the "P" key to adjust the sensitivity from 1-7 levels. Level 7 is the highest, level 1 is the lowest, and the sensitivity is not 0.

- * Short press the "P" key, there will be a slight vibration prompt when changing the parameters.

www.electric-collars.com / www.reedog.eu

8 Assembling the Bark Stopper

- B3: Protected mode**
- After 5 consecutive triggers, it enters the protection mode, and the product is in a 1-minute pause period. Press the power button to exit the pause.

8A. Install the probe



- 1. Select probe
- 2. Twist to tighten the probe
- * Shorter contacts are already installed on the bark arrester. If it is not long enough, please replace the long contact by yourself.

8B. Install the Silicone Protective Cover

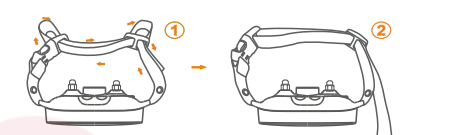
- The conductive silicone protective cover can effectively reduce the physical damage of the contact to the dog's skin.



www.electric-collars.com / www.reedog.eu

9 Wearing Method

9A. Adjust the collar and bark stopper before wearing.



- 9B. Make sure the product is snug but loose enough that one finger can be caught between the strap and the dog's neck.



9C. Points to note when wearing.

- Wear less than 12 hours
- Throat position
- Guaranteed skin contact
- Moderately tight collar

www.electric-collars.com / www.reedog.eu

10 Frequently Asked Questions

Q: Why doesn't the bark stopper work when the dog barks?

- A: There are three possible causes for this problem. The first is that the trigger sensitivity is not high enough, so try turning up the sensitivity level. Secondly, the probe does not touch the skin, so please try to adjust the tightness of the strap to ensure good skin contact. The third mode setting is not high enough, so choose a mode with a high stimulation intensity.

Q: Are bark arresters safe and humane?

- A: All the means of stopping barking will not cause any direct harm to the pet's body, but it will make them feel very uncomfortable. Even so, do not overuse this product on pets. See all warnings and cautions in the manual.

Q: Do other dog barks or other ambient noises also trigger the collar?

- A: It can be triggered, but the probability is very low. We have optimized the waveform recognition technology of dog barking sound to enhance the ability to resist false triggering. If there are false triggers, please lower the sensitivity setting (1 is the lowest, 7 is the highest)

www.electric-collars.com / www.reedog.eu

The device has been approved for use in EU countries and is therefore provided with the **CE mark**. All necessary documentation is available on the website: www.electric-collars.com
Changes to technical parameters, properties, and printing errors are reserved.

Service center and distribution

Reedog s.r.o.

Sedmidomky 459/8

Praha 10 - Michle, 101 00

Phone: +1 646 980 4569

Email: info@reedog.eu

