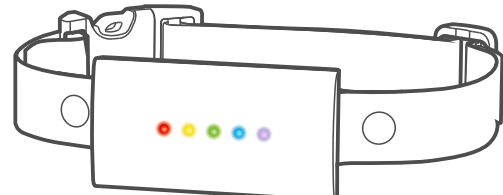


The design concept of this product is to cultivate good habits of pets, not punitive. Do not overuse this product on pets.



**NOTICE** Please Read The User Manual Carefully Before Use and Keep It in A Safe Place!

[www.electric-collars.com](http://www.electric-collars.com) / [www.reedog.eu](http://www.reedog.eu)

## Explanation of Attention Words and Symbols Used in This Guide



This is the safety alert symbol. It is used to alert you to potential personal injury hazards. Obey all safety messages that follow this symbol to avoid possible injury or death.



**WARNING** indicates a hazardous situation which, if not avoided, could result in death or serious injury.



**CAUTION**, used with the safety alert symbol, indicates a hazardous situation which, if not avoided, could result in minor or moderate injury.



**CAUTION**, without the safety alert symbol, is used to address practices not related to personal injury.



**NOTICE** is used to address practices not related to personal injury.



**PROHIBITED** indicates that the operation is prohibited.

## Safety Instructions



**WARNING**

It is forbidden to be used on aggressive dogs. An aggressive dog may cause serious injury or even death to the owner or others. If you are not sure whether this product is suitable for your dog, please consult a professional dog trainer.

[www.electric-collars.com](http://www.electric-collars.com) / [www.reedog.eu](http://www.reedog.eu)

Children are prohibited from playing with this product. Keep collar away from children.



**CAUTION**

Please make sure your dog is healthy before using the product. If you are unsure about this, please consult your veterinarian.

When the collar is turned on, the human body should not directly touch the E-Shock contact of the product.

If rash or sore is found at the contact location of E-Shock probe, please stop using this product until the skin recovers.

Collar wearing time should not exceed 12 hours per day, and please adjust the wearing position every 1-2 hours.

This product is suitable for dogs over weighing more than 8 pounds and the age of 6 months.

It is forbidden to use this product as a matching collar for pet leashes.



**CAUTION**

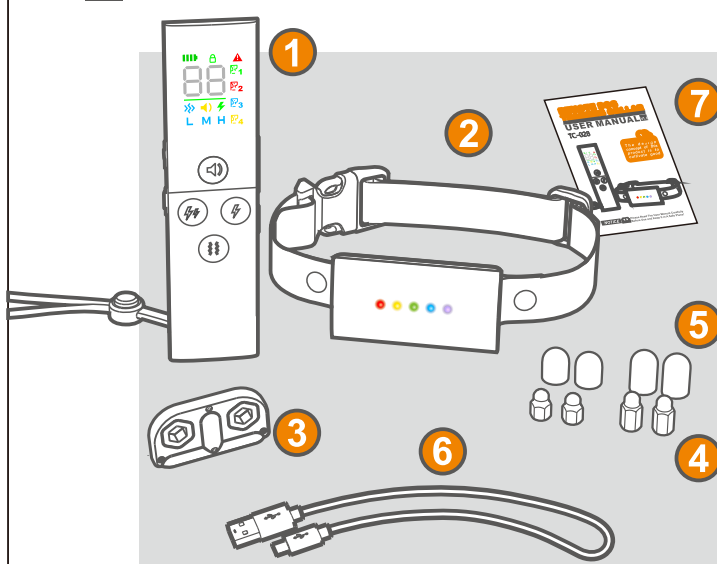
It is important to check the E-Shock contact probe area of the dog's neck every day for Rashes&Sores.

The long hair around the dog's throat can be properly shortened, but it is not recommended to be completely shaved.

[www.electric-collars.com](http://www.electric-collars.com) / [www.reedog.eu](http://www.reedog.eu)

Remove the collar before vigorous play with the dog.

## What's in the Box



1. Training Remote
  2. Training Receiver (Collar)
  3. Test Unit & Probe Driver
  4. Long and Short E-Shock Probes
  5. Probe Protective Cover
  6. USB Charging Cable
  7. User Manual
- \* In the 2-pair package, items No. 2, 4, 5, will have one more piece.

## How to Train

### 1. Some Training Guides

- Pet Treats:** If you're attempting to teach your dog a behavior, make sure your dog understands what you want before introducing E-Shock stimulation. You can do this using your dog's favorite treats.
- When Training Begins:** You can begin basic obedience training without the training collar as soon as you bring your puppy home.
- Stopping Unwanted Behavior:** The level of stimulation should be enough to interrupt your dog and give you the ability to redirect your dog's attention to another behavior. It's best if the behavior you redirect your dog to is "incompatible" with the unwanted behavior. NOTE: Using praise or treats immediately after the correct response is great for encouraging your dog to repeat the desired behavior.
- Collar Conditioning:** You don't want your dog to only associate wearing the training collar with being corrected. While your dog is wearing the collar, make sure to spend ample time playing and letting your dog be a dog.
- Timing:** For static training to work properly, timing is very important. You should apply the static stimulation immediately (within 2 seconds) of an undesirable behavior. This will help your dog make the association between the undesirable behavior and the static stimulation. If your dog seems nervous, scared or confused after applying a static stimulation, stop using the stimulation and make sure your dog has learned an appropriate behavior that will remove the static stimulation and/or earn him a reward.

For more training techniques, please refer to professional books or consult a pet trainer.

### 2. Find the Best E-Shock Level for Your Pet

**Important:** Always start at the lowest level and work your way up.

The Remote Trainer has 99 E-Shock levels. This allows you to choose the E-Shock level that is best for your pet.

[www.electric-collars.com](http://www.electric-collars.com) / [www.reedog.eu](http://www.reedog.eu)

## Terms of Use & Limitation of Liability

### 1. Terms of Use

Your use of this product means that you accept all terms, conditions and statements in this manual.

### 2. Correct Use

This product is designed for pets that need training. Proper use includes reviewing the entire User Manual included with the product and any specific "Caution" statements.

### 3. Prohibition of illegal or Prohibited Use

This product is only suitable for pets. This training device is not intended to harm or provoke pets. Using this product not in accordance with the instruction manual may violate local laws.

### 4. Scope of Responsibility

The manufacturer is not responsible for any related damages, direct, indirect, punitive, non-major, and other indirect losses caused by incorrect use or abuse of this product. The buyer bears all risks and responsibilities of using this product.

### 5. Modification of Terms and Conditions

The manufacturer reserves the right to change the terms, conditions and notices related to this product.

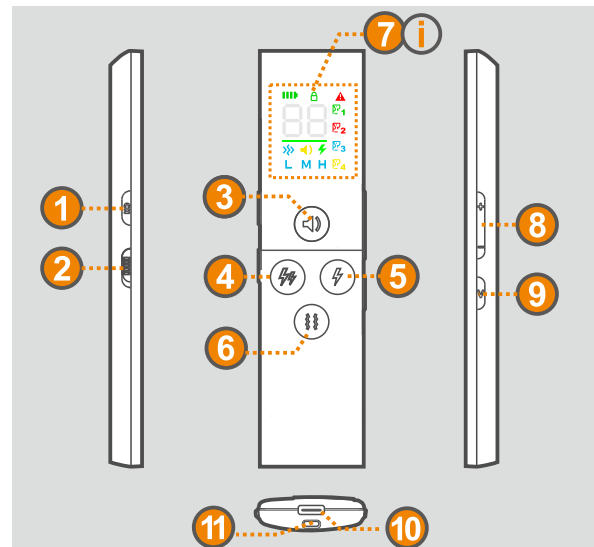
## Certification Statements



This device complies with Part 15 of the FCC Rules. Operation is subject to the following two conditions:  
(1) This device may not cause harmful interference, and  
(2) This device must accept any interference received, including interference that may cause undesired operation.

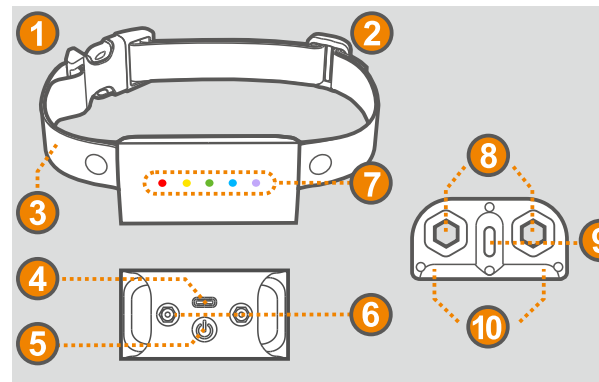
[www.electric-collars.com](http://www.electric-collars.com) / [www.reedog.eu](http://www.reedog.eu)

## Learn About Your Trainer



1. Dog Channel
  2. Lock Key Board
  3. Beep
  4. E-Shock Boost
  5. E-Shock Level
  6. Vibration
  7. Color Display
  8. E-Shock Level
  9. Vibration Level
  10. USB Charging
  11. Hand trap Hole
- \* E-Shock Boost is 1.2 times of the original base.

[www.electric-collars.com](http://www.electric-collars.com) / [www.reedog.eu](http://www.reedog.eu)

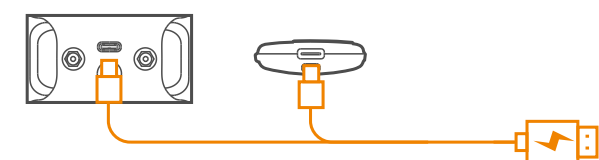


1. Buckle
2. Slider Buckle
3. Adjustable Strap
4. USB Charging
5. Power ON&OFF / Pairing Key
6. E-Shock Probe
7. LED Indicator
8. Probe Mount
9. Test Light
10. Test Contact

## Start Using Collar

### 1. Charge the Collar First

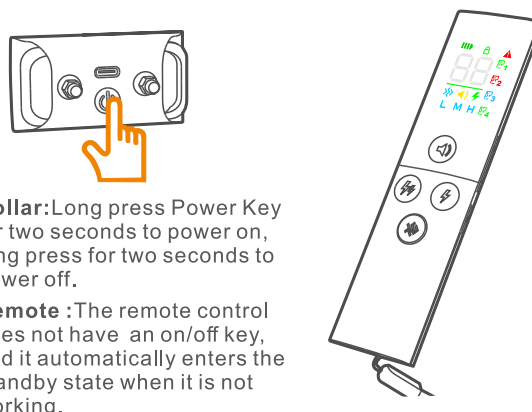
If the device does not turn on normally, please charge it first.



- Use the type-c USB cable to charge the product.
- It can be charged in both off-state and on-state.
- The product limits the charging voltage and current to 5V1A.

[www.electric-collars.com](http://www.electric-collars.com) / [www.reedog.eu](http://www.reedog.eu)

## 2. Turn on The Devices

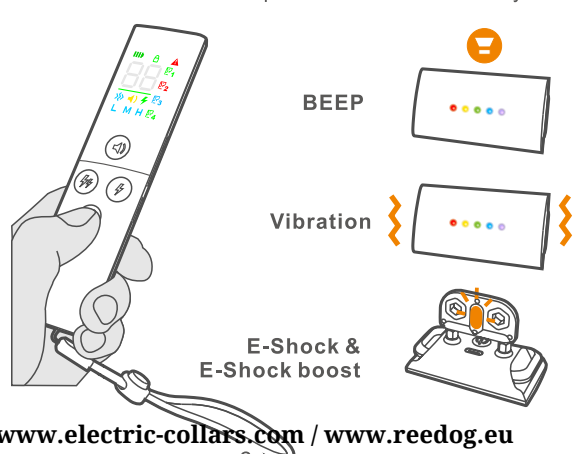


**Collar:** Long press Power Key for two seconds to power on, long press for two seconds to power off.

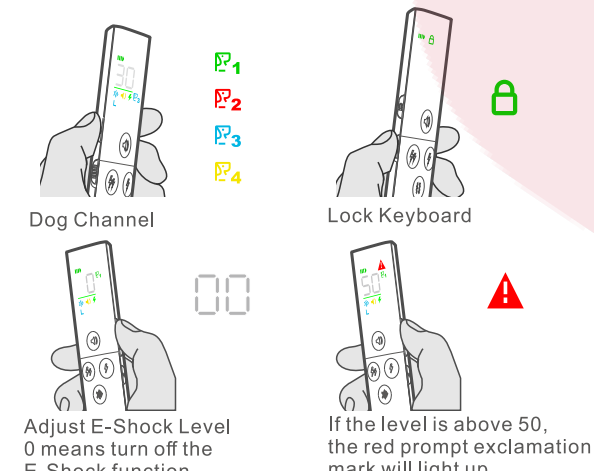
**Remote :** The remote control does not have an on/off key, and it automatically enters the standby state when it is not working.

## 3. Operation & Test The Collar Features

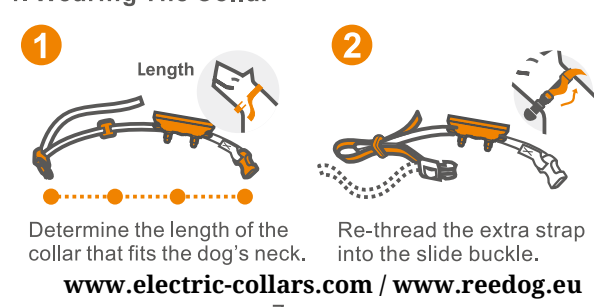
Before using the product officially, please test whether the basic functions of the product can work normally.



[www.electric-collars.com](http://www.electric-collars.com) / [www.reedog.eu](http://www.reedog.eu)



## 4. Wearing The Collar



[www.electric-collars.com](http://www.electric-collars.com) / [www.reedog.eu](http://www.reedog.eu)

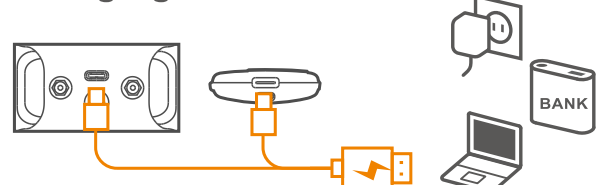


## 5. Start Training



[www.electric-collars.com](http://www.electric-collars.com) / [www.reedog.eu](http://www.reedog.eu)

## Charging



- Use the type-c USB cable to charge the product.
- It can be charged in both off-state and on-state.
- The product limits the charging voltage and current to 5V1A.

## Regarding well-being of your dog

### 1. About "Collar Sores"

The milliamps generated from the receiver of training collars simply cannot generate enough heat necessary to do tissue damage. The real problem comes from inappropriate wear of the collar receiver to skin.

Pressure necrosis, or what many in the industry call "collar sores", can happen if the receiver is not being worn properly. They also occur if the collar is kept on the dog for too long of a period of time.

There are two reasons:

- Improper fit
- Improper wear time

Please pay attention to your dog's neck when you begin using a training collar. A few times throughout the day take a peek and see how the skin looks. Make sure the fit is correct and notice if there is the beginning signs of redness. If so, move the receiver to the opposite side of the neck or take the collar off for a bit to increase airflow and circulation to the skin.

[www.electric-collars.com](http://www.electric-collars.com) / [www.reedog.eu](http://www.reedog.eu)

## CAUTION

- Don't Wear More than 12H
- Silicone Cover Protect Skin
- Timely Adjustment
- Daily Check for Rash&Sore
- The Receiver collar is not a regular collar and not recommended to put on a leash to walk your dog. (Doing so during pulling may hurt the dog due to protruding electrodes on the Receiver.)
- Do not put the collar on for over 12 hours, it may cause rashes or discomfort to your dog's skin.
- Using the shock contact silicone sleeve can effectively protect the skin.
- Check the condition of the dog's skin frequently and adjust the position of the receiver.

## 2. Other Precautions

- Do not operate the devices under temperature of 104°F(40°C) and above, doing so in such high temperature will decrease the performance of the batteries.
- Do not use the set in places with strong electromagnetic interference. This will greatly compromise the performance of the product.
- Avoid dropping the devices on hard surface or inflict excessive force on them.
- When not in use, Turn off the products, and store the set in a cool dry place.
- If the Receiver has gotten dirty, wipe it clean with a damp cloth.

[www.electric-collars.com](http://www.electric-collars.com) / [www.reedog.eu](http://www.reedog.eu)

## Troubleshooting

If the product is abnormal during use, you can do the following:

- Check Collar Wearing** Make sure the collar is tight enough and the device is in the correct position.
- Test Product** Check if the product is working properly and do the necessary tests.
- Communication Distance** The communication distance of this product is 500 meters in an open place, exceeding or having obstacles will reduce the communication distance.
- Contact Dealer** For more questions, please contact your local or online dealer.

[www.electric-collars.com](http://www.electric-collars.com) / [www.reedog.eu](http://www.reedog.eu)

**Warning: Changes or modifications not expressly approved by the party responsible for compliance could void the user's authority to operate the equipment.**

**Note:** This equipment has been tested and found to comply with the limits for a Class B digital device, pursuant to Part 15 of the FCC Rules. These limits are designed to provide reasonable protection against harmful interference in a residential installation. This equipment generates uses and can radiate radio frequency energy and, if not installed and used in accordance with the instructions, may cause harmful interference to radio communications.

However, there is no guarantee that interference will not occur in a particular installation. If this equipment does cause harmful interference to radio or television reception, which can be determined by turning the equipment off and on, the user is encouraged to try to correct the interference by one or more of the following measures:

- Reorient or relocate the receiving antenna.
- Increase the separation between the equipment and receiver.
- Connect the equipment into an outlet on a circuit different from that to which the receiver is connected.
- Consult the dealer or an experienced radio/TV technician for help. The device has been evaluated to meet general RF exposure requirement. The device can be used in portable exposure condition without restriction.



The company declares under its own responsibility that this product complies with the basic requirements of CE (2014/30/EU) and RoHS (2011/65/EU). Without the approval of our company or the distributor, unauthorized changes or modifications to the equipment may violate the CE regulations, may cause the user to lose the right to operate the equipment, and invalidate the warranty.

[www.electric-collars.com](http://www.electric-collars.com) / [www.reedog.eu](http://www.reedog.eu)



**Recycling Information&Battery Disposal**  
Please observe the regulations for electronic and electrical devices to be disposed of in the respective country. In some countries or regions, this device must be recycled. If this device is no longer required, it must not be disposed of with normal municipal waste. Separate collection of spent batteries is required in many regions; check the regulations in your area before discarding spent batteries. For more recycling information, please refer to local regulations.

## Specifications

Product name :Remote dog training collar  
Product model : TC-028  
Material: ABS plastic, nylon, stainless steel  
Battery capacity: remote control 300 mAh; receiver 300mAh  
Charging voltage: DC5V/1A  
Charging time: 1-1.5 hours  
Charging port: Type-C USB  
Wireless power: 100mW (20dBm)  
Remote control frequency: 433MHz  
Communication distance: open 500 (meters)  
Operating temperature: -10°C~40°C(32~104°F), <95%RH  
Standby time: 60 days for remote control; 15 days for receiver.  
Product weight: remote 45g; receiver+strap 65g  
Product size: remote 145mm\*36mm\*12mm; receiver 68mm \* 37mm\*31mm  
Scope of application: all kinds of dogs

Designed and Manufactured in China  
[www.electric-collars.com](http://www.electric-collars.com) / [www.reedog.eu](http://www.reedog.eu)



The device has been approved for use in EU countries and is therefore provided with the **CE mark**. All necessary documentation is available on the website: [www.electric-collars.com](http://www.electric-collars.com)  
Changes to technical parameters, properties, and printing errors are reserved.

**Service center and distribution**

Reedog s.r.o.

Sedmidomky 459/8

Praha 10 - Michle, 101 00

Phone: +1 646 980 4569

Email: [info@reedog.eu](mailto:info@reedog.eu)

