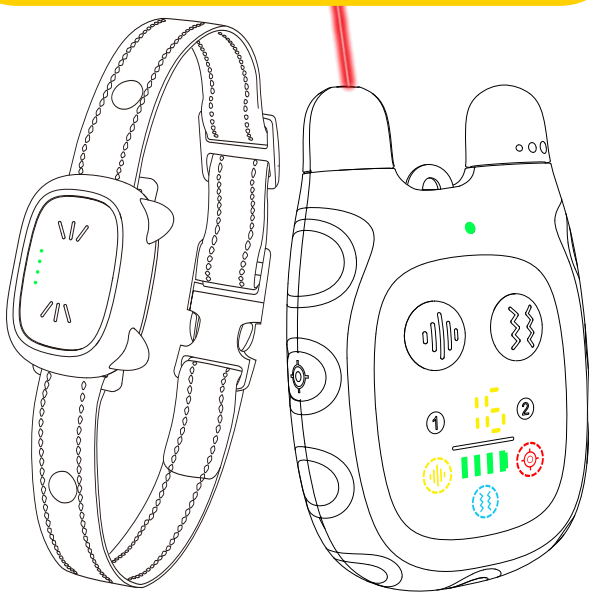


# reedog

## REMOTE CAT TRAINER WITH LASER DESIGN



Model: CP1

[www.electric-collars.com](http://www.electric-collars.com) / [www.reedog.eu](http://www.reedog.eu)



## I. Important Safety Information:

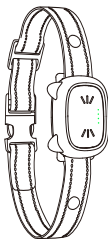
Before you use this product for the first time, please read and follow the instructions in this manual carefully. The cautions below will help keep your cat safe and comfortable.

- ◆ **DO NOT** aim the Laser Emission Port directly at your eyes.
- ◆ **DO NOT** aim the laser beam at a person.
- ◆ **DO NOT** aim the laser beam directly into your cat's eyes or the eyes of other animals.
- ◆ **NOT** intended as a toy for children.
- ◆ **DO NOT** allow young children to use this product to play with your cat without adult supervision.
- ◆ If you notice your cat exhibiting unusual behavior, immediately discontinue the use of the product.
- ◆ Consult with a veterinarian before resuming use of the product.
- ◆ **DO NOT** use this product while your cat is eating, drinking, or resting. Disturbing your cat's routine may cause anxiety or aggression.
- ◆ **DO NOT** use this product to punish your cat, as it may cause fear or disgust.
- ◆ Avoid keeping the receiver on your cat's neck for extended periods. It is recommended to use the receiver for no more than 12 hours per day. Prolonged use may lead to discomfort or skin damage for your cat.
- ◆ Check the fit to prevent excessive pressure; follow the instructions in this manual.
- ◆ The Receiver Collar meets IP67 waterproof rating, it can be submerged in water up to 1 meter for up to 30 minutes. If submerged and wet, please do not use it.
- ◆ **DO NOT** charge the device near any flammable substances.
- ◆ **DO NOT** attempt to disassemble or modify the product yourself. This may cause damage to the product or create safety hazards.

## II. Package Content



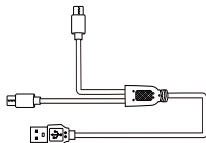
Remote Transmitter



Receiver Collar



Wrist Strap



USB Type-C Cable



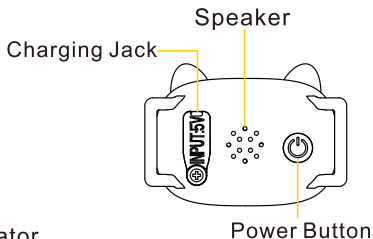
User Manual

## III. Product Overview

### Receiver



Battery Bar Function Indicator

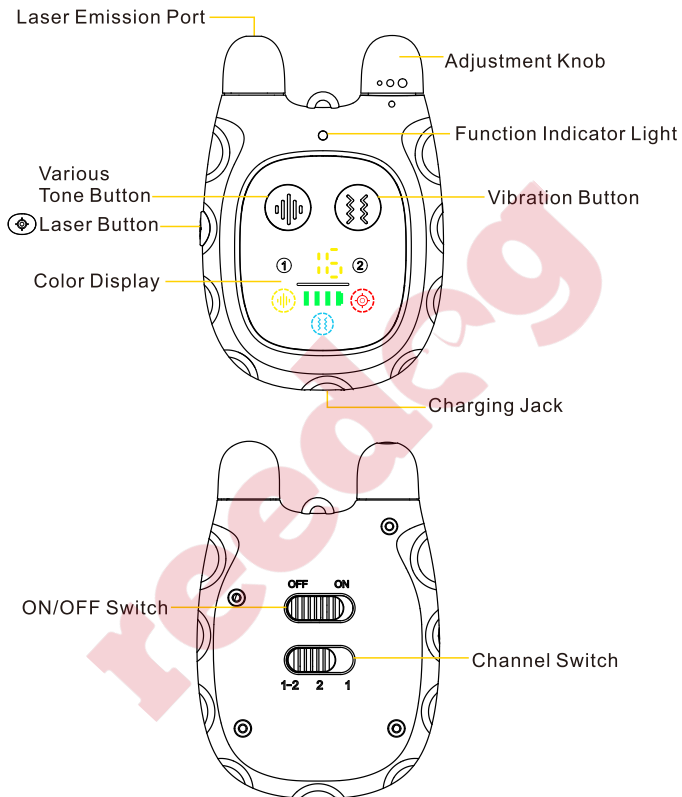


Speaker

Charging Jack

Power Button

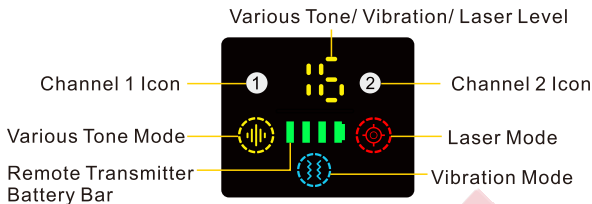
## Remote Transmitter



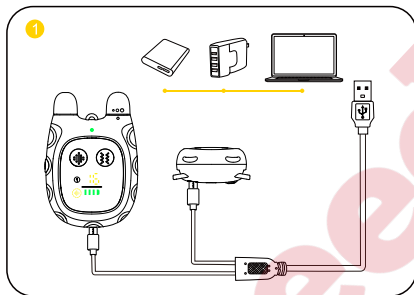
### Note:

The Remote Transmitter will go into sleep mode if there is no operation in the 30s.



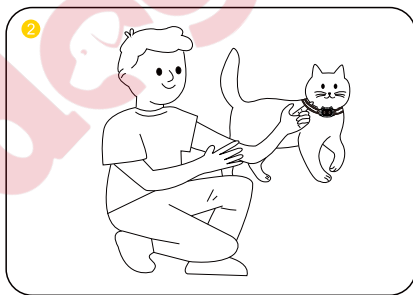


## IV. Quick Start Guide



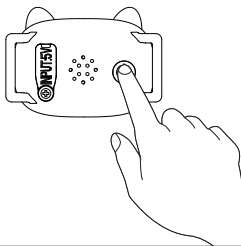
Charge the Receiver and the Remote Transmitter for 2-3 hours with the double-headed USB Type-C Cable from the package box.

**Note: The charger, power bank and other charging devices shown in the above picture are not included in the box.**



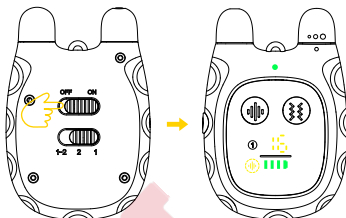
Let your cat stand on all fours or lay down fully. Fit the Receiver to your cat by leaving one finger space between the Receiver Collar and your cat's neck. Center the Receiver underneath your cat's neck.

3



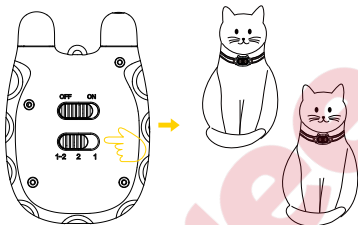
Turn on the Receiver by pressing and holding the Power Button for 2 seconds with a vibration to indicate that the Receiver is turned on, and then the White Indicator on the Color Display continues to blink regularly.

4



To turn on the Remote Transmitter, slide the Switch to 'ON', and the Color Display will light up.

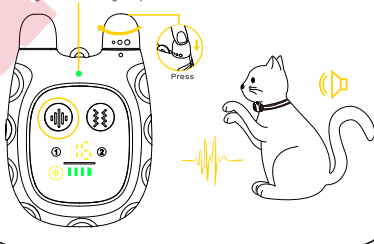
5



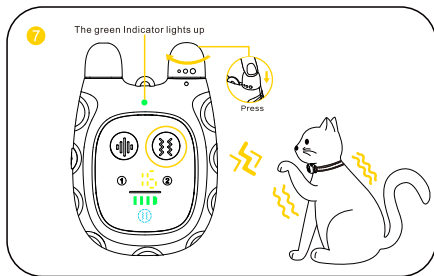
This product can train up to 2 cats. You can either train 2 cats independently by sliding the Channel Switch to '1' or '2', or train two cats simultaneously by sliding the Channel Switch to '1-2'. This Receiver is paired to the Channel 1 by the factory default setting, if you have an extra receiver to pair up, please follow the instructions in the section Pairing Up on page 12.

6

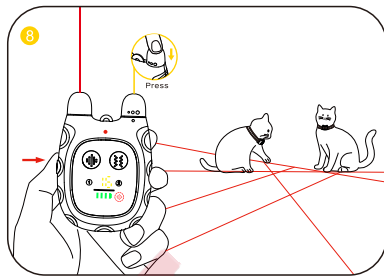
The green Indicator lights up



**Various Tones Mode:** Press the Various Tone Button, and the Yellow Tones Icon on the Remote Transmitter rapidly lights up. The Receiver will deliver a tone, and the White Indicator on the Receiver comes up simultaneously. To change a different Tone, press the Adjustment Knob to select the Various Tone Mode first, then turn the Adjustment Knob left and right to raise/lower to the desired type, and finally press the button to confirm the modification.



**Vibration Mode:** Press the Vibration Button, and the Blue Vibration Icon (1) on the Remote Transmitter rapidly lights up. The Receiver will deliver vibration, and the White Indicator on the Receiver comes up simultaneously. To adjust the Vibration level, press the Adjustment Knob to select the Vibration Mode first, then turn the Adjustment Knob left and right to raise/lower to the desired level, and finally press (2) button to confirm the modification.



**Laser Mode:** Press the Laser Button, and the Red Laser Icon (3) on the Remote Transmitter rapidly lights up. The Laser Emission Port on the Remote Transmitter will emit a Laser Beam. To adjust the Laser frequency, press the Adjustment Knob to select the Laser Mode first, then turn the Adjustment Knob left and right to raise/lower to the desired frequency, and finally press (4) button to confirm the modification.

## CAUTION:

- ◆ DO NOT aim the Laser Emission Port directly at your eyes.
- ◆ DO NOT aim the laser beam at a person.
- ◆ DO NOT aim the laser beam directly into your cat's eyes or the eyes of other animals.

### Tips:

For detailed operating instructions, please refer to the specific steps.

## How the System Works

This Cat Trainer uses wireless signals to give cats sensory stimulation that meets their natural needs while keeping them safe and entertained. Here's how it works:

1. Signal Transmission: When you press the button on the Remote Transmitter, it sends a wireless signal of a specific frequency.
2. Receiving: The Receiver attached to your cat's collar picks up the wireless signal from the Remote Transmitter.
3. Function Activation: The receiver activates a specific function based on the signal received:

\*Tones Mode: Plays 16 different tones, like squeaky toy sounds, bird and mouse chirping, and other tones to spark the cat's curiosity.

\*Vibration Mode: Produces 16 gentle vibrations to help manage the cat's behavior.

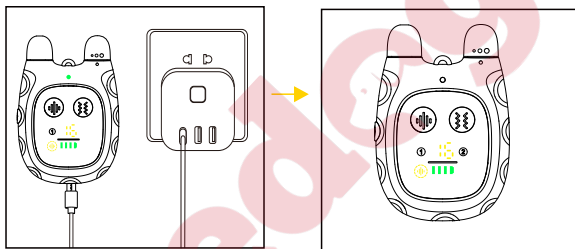
\*Laser Mode: Emits 8 different laser beams to encourage cats to chase.

4. Safety Stimulation: All functions are designed to be safe. The lasers, tones, and vibrations are within safe ranges, ensuring they won't harm cats while still grabbing their attention and interest.

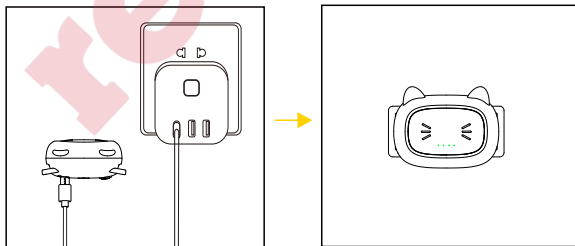
## V. Setting Up

### 1. Charge the Product

**Remote Transmitter:** charge the device until the rapidly flashing battery bar becomes constantly on, which will take around 3 hours.



**Receiver:** charge the device until the rapidly flashing green Indicator becomes constantly on, which will take around 3 hours.



## Note:

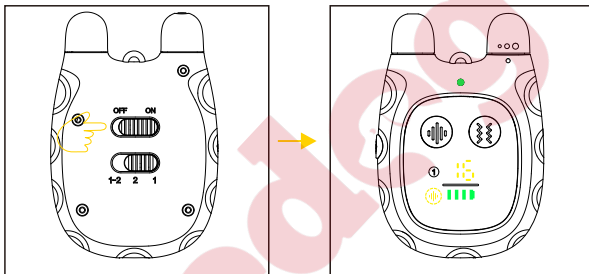
- (1) The charger, power bank and other charging devices shown in the above picture are not included in the box.
- (2) Use the charging cable in the package when charging. Other charging cables may not be suitable for this Cat Trainer, which may cause electric damage.
- (3) The Cat Trainer ONLY supports a 5V-rated power source. If charged with an improper charger:

Receiver Collar—deliver a rapid warning tone and stop charging automatically.

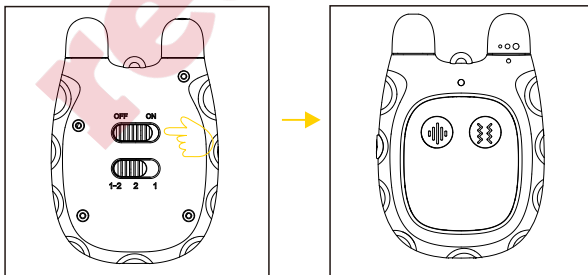
Remote Transmitter—stop charging automatically with the Indicator rapidly blinking in red.

## 2. Turn On/Off the Product

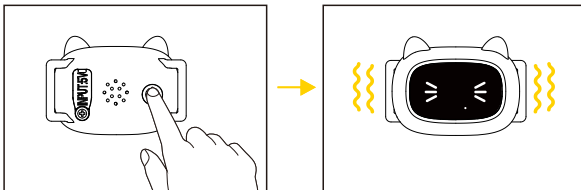
To turn on the Remote Transmitter, slide the Switch to ' ON ', and the Color Display will light up.



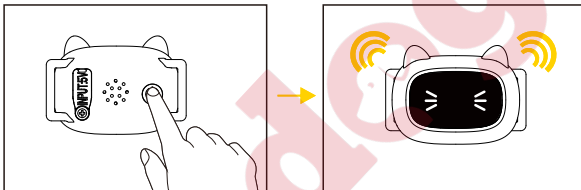
To turn off the Remote Transmitter, slide the Switch to ' OFF ', and the Color Display will shut down.



Turn on the Receiver by pressing and holding the Power Button for 3 seconds with vibration, as the White Indicator blinks regularly.



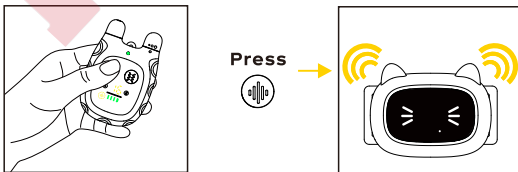
Turn off the Receiver by pressing and holding the Power Button for 3 seconds with a long beeping to indicate that the Receiver has turned off as the White Indicator light stops blinking.




## VI. Training Modes

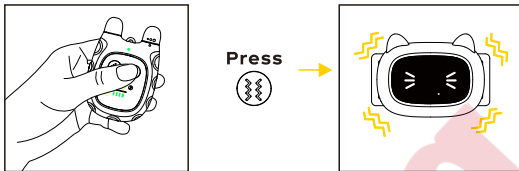
### 1. Various Tone Mode

Press the Various Tone Button and the Receiver Collar will deliver a tone. It will cut off automatically if you press and hold the Various Tone Button for 10 seconds. There is a total of 16 kinds of Tone for training. To adjust the type of tone, press the Adjustment Knob to select the Various Tone Mode first, then turn the Adjustment Knob left and right to raise/lower to the desired type, and finally press the button to confirm the modification.




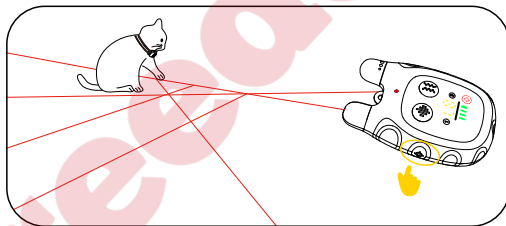
## 2. Vibration Mode:

Press the Vibration Button and the Receiver will deliver a vibration. It will cut off automatically if you press and hold the Vibration Button for 10 seconds. There is a total of 16 levels of Vibration. To adjust the vibration level, press the Adjustment Knob to select the Vibration Mode first, then turn the Adjustment Knob left and right to raise/lower to the desired level, and finally press  button to confirm the modification.



## 3. Laser Mode:

Press the Laser Button, and the Laser Emission Port on the Remote Transmitter will emit a Laser Beam. It will cut off automatically if you press and hold the Laser Button for 10 seconds. There is a total of 8 frequencies of Laser Beam. To adjust the Laser frequency, press the Adjustment Knob to select the Laser Mode first, then turn the Adjustment Knob left and right to raise/lower to the desired frequency, and finally press  button to confirm the modification.

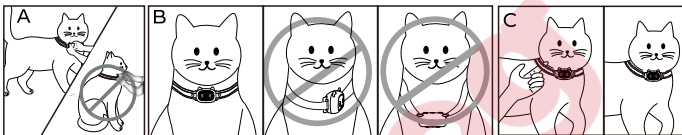


# VII. Fitting the Receiver

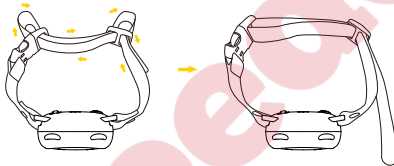
## IMPORTANT:

The proper fit and placement of your Receiver are important for effective training. This Cat Trainer is no touch point design, it can protect your cat's delicate skin. To ensure a proper fit, please follow these steps:

1. Make sure that the Receiver is turned off.
  2. Let your cat stand on four feet or lay down fully (A).
  3. Place the Receiver on your cat's neck close to the ears. Center the Receiver underneath your cat's neck, touching the skin (B).
- Note: Avoid keeping the receiver on your cat's neck for extended periods. Prolonged use may lead to discomfort or skin damage for your cat.**
4. The Receiver should fit snugly, yet loose enough to allow one finger to fit between the strap and your cat's neck (C).
  5. Allow your cat to wear the Receiver for several minutes then recheck the fit. Check the fit again as your cat becomes more comfortable with the Receiver.



6. To attach the collar to the Receiver, please follow the following steps as instructed to thread the strap.



## CAUTION:

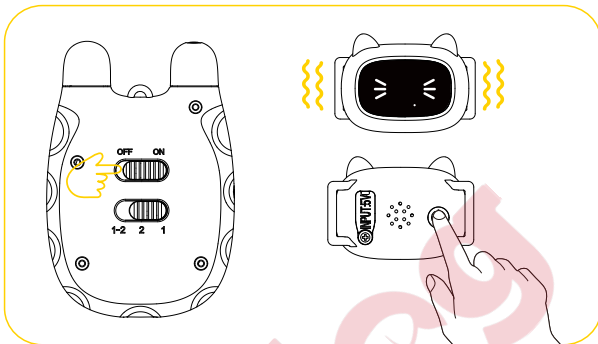
- DO NOT leave the Receiver on your cat's neck for continuous 12 hours.
- Never attach a leash to the collar.
- Never fit the Receiver too tight to your cat's neck.
- Check the fit regularly to make your cat more comfortable with the Receiver.

## VIII. Pairing Up

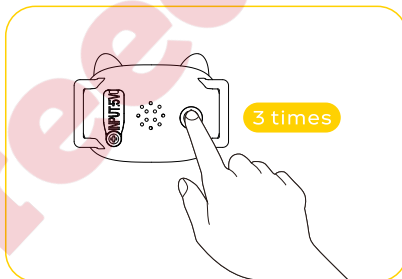
In case the Receiver is not responding to the Remote Transmitter, follow these steps to pair them up:



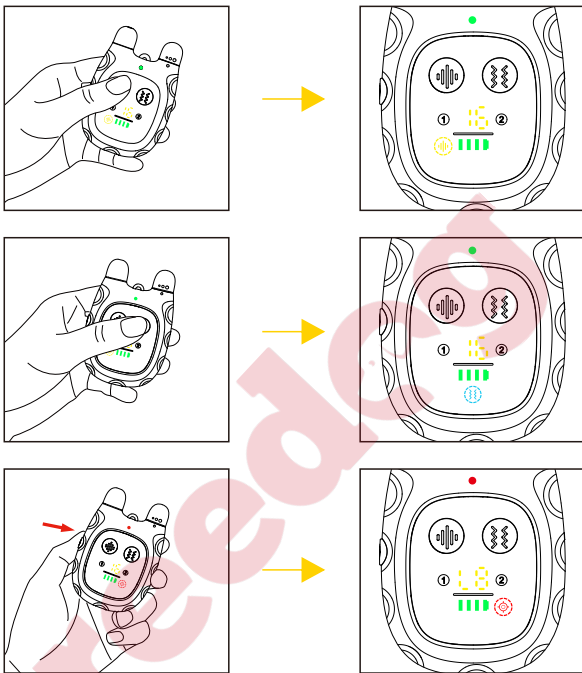
1. Press and hold the Power Button on the Receiver for 3 seconds to turn it on. Turn on the Remote Transmitter by sliding the Switch to ' ON '.



2. Press the Power Button on the Receiver 3 times to enter the Pairing Mode. You will hear a Beeping tone, and the Receiver's White Indicator will constantly light on. You will now have 10 seconds to finish the pairing.

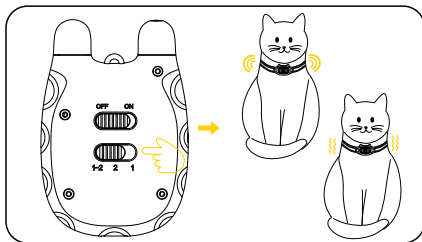


3. Press any of the Various Tone, and Vibration Button, and the Receiver will respond accordingly. This indicates that the pairing process is completed.

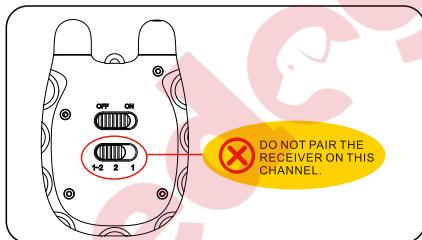


### Tips:

- (1) The Receiver is paired up to the Remote Transmitter in Channel 1 by the factory default setting.
- (2) If you buy an extra Receiver, please follow the above instructions to pair it up to Channel 2. Then you can control two Receivers independently by sliding Channel Switch to '1' or '2'.
- (3) By switching to Channel '1-2', you're able to control two receivers simultaneously.



(4) DO NOT pair the Receivers when the Channel Switch on Remote Transmitter is on '1-2' channel, otherwise the Receiver will NOT respond when Remote Transmitter is on Channel '1' or '2'.






(5) If you can not pair your device successfully, it may be due to signal interference. Please try pairing again in a different location or contact our service center.


## IX. Indicator Definitions

### Remote Transmitter Indicator:

Charging	The Green Indicator light blinks regularly
Fully Charged	The Green Indicator light becomes solid

Press 	A Green Indicator light comes up
Press 	A Green Indicator light comes up
Press 	A Red Indicator light comes up

## Receiver Indicator:

	Slowly blinking indicates the Receiver is on
	Lights up simultaneously as the function is triggered

## X. Training Tip

### How to find the best stimulation for your cat?

**Important:** Always start at the lowest level and work your way up. The Cat Trainer has 16 types of Tones and 16 levels of Vibration. For Tones, there are 16 types of Tones, such as squeaky toy sounds, bird and mouse chirping, and other tones to spark the cat's curiosity. For Vibration, level 1 is the lowest; the highest level for Vibration is level 16.

This allows you to choose the Stimulation level that is best for your cat. Once you have placed the Receiver on your cat, it is time to find the Stimulation Level that is best for it. This is called the Recognition Level. A slight change in your cat's behavior, such as looking around in curiosity, scratching at its collar, or flicking its ears, indicates the Recognition Level that is best for your cat.

### Follow the steps below to find your cat's Recognition Level:

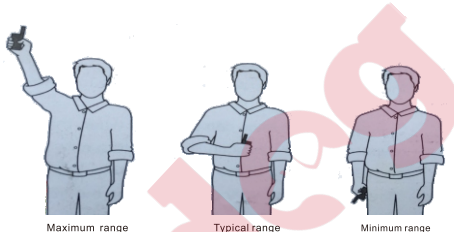
1. Starting at Level 1, press the Various Tone/Vibration continuously for 1 to 2 seconds.  
Note: When the Various Tone/Vibration is held down for 10 consecutive seconds, the Remote Transmitter will "time out", and you must release and press the button again before additional stimulation can be delivered.
2. If your cat shows no reaction, repeat the Stimulation Level several times before moving up to the next level.
3. YOUR CAT SHOULD NOT HISS/SCREAM/GROWL OR PANIC WHEN RECEIVING STIMULATION. IF THIS HAPPENS, THE STIMULATION LEVEL IS TOO HIGH AND YOU NEED TO GO BACK TO THE PREVIOUS LEVEL AND REPEAT THE PROCESS.

4. Move up through the Stimulation Levels until your cat reliably responds to the stimulation.
  5. If your cat continues to show no response at the highest level of Vibration, check the fit of the Receiver.
- If after completing all of these steps, your cat still does not indicate it is feeling the stimulation, please contact our customer service.

### How to Maximize the distance ?

Terrain, weather, vegetation, transmission from other radio devices, and other factors will affect the maximum range.

Hold the Remote Transmitter in a horizontal position away from your body to achieve optimum range. For maximum signal strength, keep the device properly charged.



\*Avoid touching the antenna or the range may decrease substantially.

## XI. Frequently Asked Questions

### Q: Is this Cat Trainer suitable for all cats?

A: This Cat Trainer aims to help resolve the lack of exercise leading to obesity and lack of companionship, which causes lonely and anxious feelings. It attracts the cat's attention via laser, tones, and vibration. Most cats will likely be attracted by the functions mentioned above in this Cat Trainer.

### Q: How do I know if I can use this product for my cat?

A: The product is designed for healthy cats over 6 months old. Most importantly, this product cannot be used on unhealthy or stress-prone cats, and if you are unsure whether this product is appropriate for your pet, please consult your veterinarian or a certified trainer.

### Q: Is the Stimulation safe for my cat?

A: Whether Tone, Vibration or Laser, it is harmless to your cat. Electronic training devices require interaction and training from the owner to achieve desired results.

**Q: Will cats feel uncomfortable wearing the Receiver?**

A: The receiver is designed to be lightweight and comfortable, ensuring it won't be a burden to your cat. However, it's important to control the time of each use and pay attention to your cat's reaction. DO NOT leave the Receiver on your cat's neck for continuous 12 hours to avoid any contact pressure to the skin.

**Q: Is the Receiver waterproof?**

A: Yes. The Receiver meets the IP67 waterproof rating, but make sure to keep the area dry when charging. Please note that the Remote Transmitter is not waterproof.

**Q: Can Laser hurt my cat's eyes?**

A: No. The laser intensity is strictly controlled, meets safety standards and will not harm your cat's eyes. However, for safety reasons, please avoid point the laser directly into your cat's eyes.

**Q: Will the Tones scare my cat?**

A: The volume of the tones is moderate and should not scare your cat. If you are concerned that your cat might be frightened, you can start with a gentle tone first.

**Q: Will the Vibration make my cat feel uncomfortable?**

A: The intensity of the vibration is gentle and will not cause discomfort to your cat. If your cat shows any signs of resistance, please stop using the vibration function immediately.

**Q: Will I get a maximum range with the Remote Transmitter?**

A: The range of the Cat Trainer will vary according to terrain, weather, vegetation, as well as transmission from other radio devices. See "How to Maximize the Distance" on page 16 for tips on maximizing your range.

**Q: How long can I continuously deliver stimulation to my cat?**

A: The maximum amount of time you can press the Various Tone/Vibration/Laser button and deliver stimulation to your cat continuously is 10 seconds. After this, the Remote Transmitter will time out, and these stimulation buttons must be released and pressed again.

**Q: Can I charge this product with any type of charger?**

A: No, you are suggested to charge this product with a charger of 5V output voltage, because a charger with an output voltage over 5V may cause damage to the product. If the input voltage becomes too high, the product will stop charging automatically. The Receiver will deliver a rapid warning tone, and the Indicator on the Remote Transmitter rapidly blink in red.

## XII. Trouble Shooting

### 1. My cat does not respond when I press a button.

- Make sure the Receiver has been turned on.
- If your range has reduced from the first time you used the Cat Trainer, the battery(-ies) may be low in either the Remote Transmitter or Receiver.
- Many factors can impact the amount of range. For a list of these factors, see “How to Maximize the Distance” on page 16.
- Increase the Stimulation Level. Refer to “How to find the best stimulation for your cat?” on page 15 for more information.
- Make sure the Receiver is placed snugly against your cat's skin. Refer to “Fitting the Receiver” on page 10 for more information.

### 2. The Receiver will not turn on.

- Make sure the Receiver has been charged. For the initial charge, be sure to charge it for 4 hours. Subsequent charges only take 2-3 hours.

### 3. The Receiver is not responding to the Remote Transmitter.

- Verify the Receiver is on.
- If the indicator is blinking rapidly, fully charge the Receiver.
- If the first two solutions did not resolve your problems, please check the “Pairing Up” on page 11 to re-pair the Receiver to the Remote Transmitter.

## XIII. FCC Statement

### USA

This device complies with part 15 of the FCC Rules. Operation is subject to the following two conditions: (1) This device may not cause harmful interference, and (2) this device must accept any interference received, including interference that may cause undesired operation.

### NOTE:

This equipment has been tested and found to comply with the limits for a Class B digital device, pursuant to part 15 of the FCC Rules. These limits are designed to provide reasonable protection against harmful interference in a residential installation. This equipment generates, uses, and can radiate radio frequency energy and, if not installed and used in accordance with the instructions, may cause harmful interference to radio communications.

However, there is no guarantee that interference will not occur in a specific installation. If interference does occur to radio or television reception, which can be determined by turning the equipment off and on, the user is encouraged to try to correct the interference by one or more of the following measures:

- Reorient or relocate the receiving antenna.
- Increase the separation between the equipment and the receiver.
- Connect the equipment to an outlet on a circuit different from that to which the receiver is connected.
- Consult customer care, the dealer, or an experienced radio/TV technician for help.

The device has been evaluated to meet general RF exposure requirement. The device can be used in portable exposure condition without restriction.

Model: CP1  
Made in China  
Version: V1.0  
303.CP1NN-7362



The device has been approved for use in EU countries and is therefore marked with the CE label.  
All required documentation is available on the website:  
[www.electric-collars.com](http://www.electric-collars.com) or [www.reedog.eu](http://www.reedog.eu)

Technical specifications, features, and printing errors are subject to change.

**Service Center and Distribution**

**Reedog, s.r.o.**  
**Sedmidomky 459/8**  
**101 00 Prague 10**  
**Tel: +1 646 980 4569**  
**Email: [info@reedog.eu](mailto:info@reedog.eu)**

