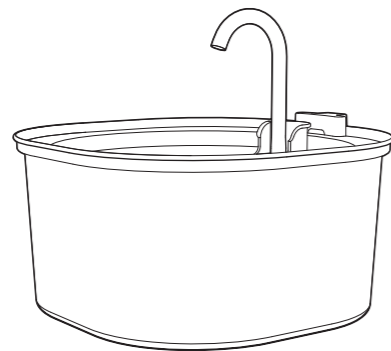


正面

STAINLESS STEEL PET WATER FOUNTAIN

User Manual



Please read this manual before use

IMPORTANT SAFETY INSTRUCTION

Before We Start: Care Instructions

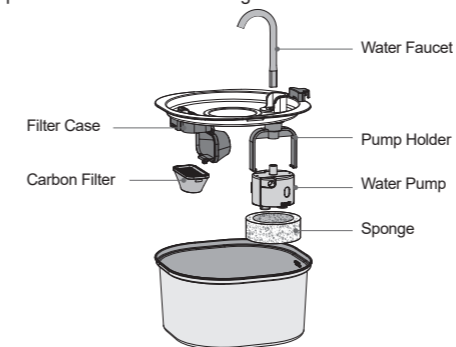
In order to provide our pet with fresh and clean water continually, please read and remember these three simple tasks:

Refill often	Please keep the water level above 50% or full all the time. The pump is designed to work in water at least one inch deep. If the pump dries without water, it may cause malfunction.
Clean the Pump and Fountain	Clean the pump and fountain separately using soap and clean water every 4 weeks. Take care not to get soap in the filter, as it cannot be rinsed out.
Replace Filters on a Regular Basis	Replace the filter case every 4 weeks when you clean your fountain, and replace the foam filter every 4 weeks.

PRODUCT INTRODUCTION

01. Product Diagram

* please confirm before installing



PRODUCT SETTING STEPS

01. Before using

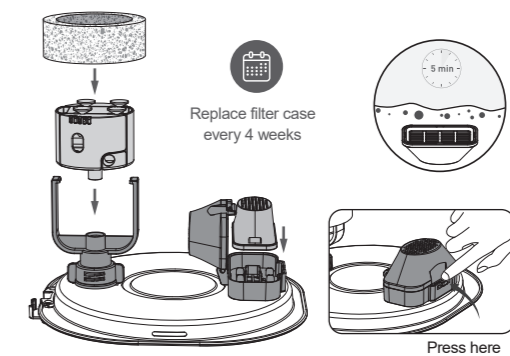
Step 1: Install pump holder first

Step 2: Place the pump into holder

Step 3: Place the sponge around the pump

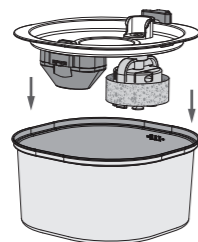
Step 4: Soak the filter for 5 minutes

Step 5: Put the filter in the filter case and close it



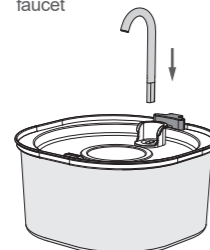
背面

02. Place the installed top cover back to the water tank

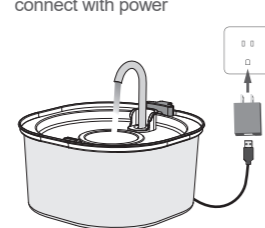


NOTE: Carefully put the cover back to form the seal.

03. Insert the water faucet



04. Filled with water then connect with power

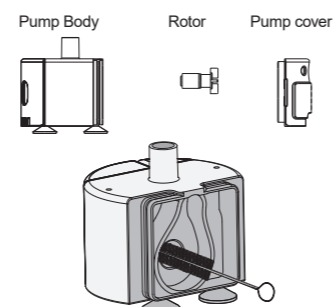


MAINTENANCE AND CLEANING

1. Cleaning the water pump and water fountain regularly can extend their service life. It is recommended to clean them every 2 weeks and replace the filter element once every 2 weeks to prevent dirt from clogging the waterway. Clogged waterways can cause poor water flow, reduced water quality, noise, and other abnormalities.

2. The specific steps are shown in the figure below:

- Take off the pump cover and rotor.
- Use the brush to clean the parts with water.



Cautious

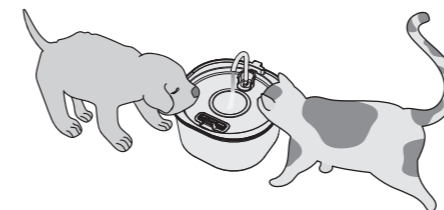
Please be sure to shut down and disconnect the power supply when the equipment is not in use, for safety.

Always keep the product on a flat surface when the equipment is being used.

This product is intended for indoor use only.

Do not allow this product to run without water.

Before maintaining or cleaning the machine, please disconnect the power supply.



Place the fountain where your pet will use it. Fill the bowl with water, leaving a half inch of space between the water and the rim. Make sure your hands, the cord and the power adaptor are dry, then plug the fountain into an outlet.

PEKTACO provides healthy and clear water, bringing flowing care and happiness to your pet.



MADE IN CHINA