

Water Fountain

Before We Start: Maintenance Instructions

In order to provide your cat with fresh and clean water continuously, please remember these three simple tasks:

Refill regularly.

Keep the water at a good level. The pump is designed to work in water at least one inch deep. If the pump dries, it may malfunction earlier than expected.

Clean your pump and your fountain.

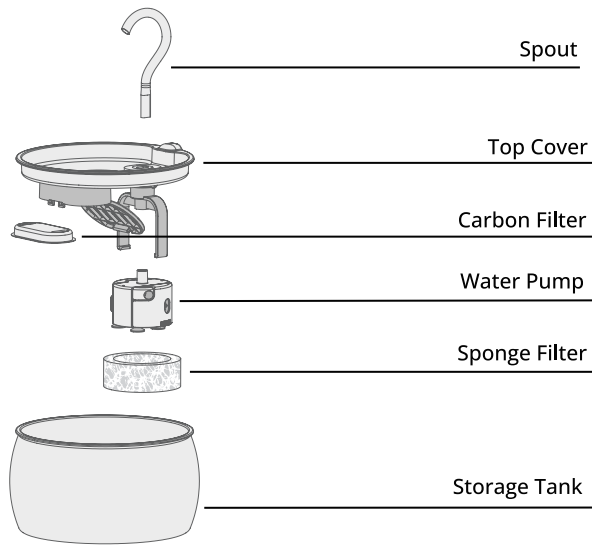
Take your pump and fountain apart to clean with soap and water every two to four weeks. Be careful not to get soap in the filters, as it will not rinse out.

Replace your filters.

Replace the carbon filter every two weeks when you clean your fountain. Replace the foam filter every two weeks.

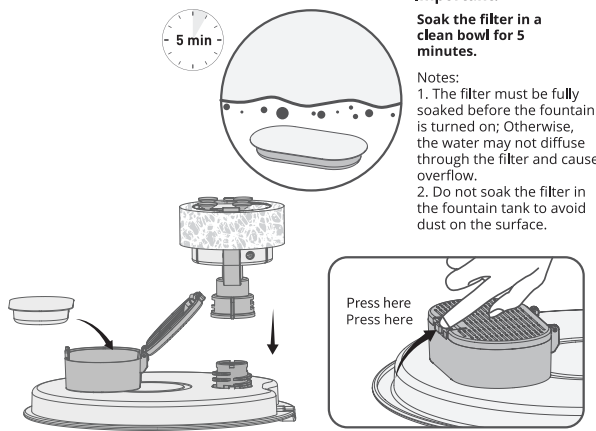
*Frequency depends on how hard the water is where you live.

What You Have:



Setup Instructions

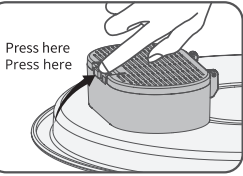
- 1** Install the pump in the pump holder first, then put the sponge around the pump and the holder. Put the carbon filter in the filter housing and close it.



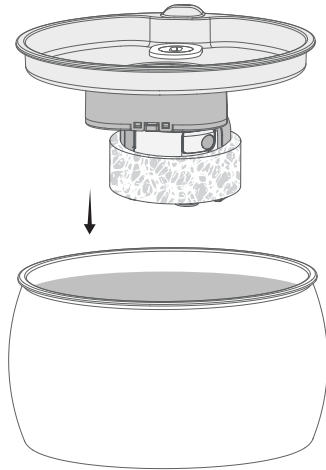
Important:

Soak the filter in a clean bowl for 5 minutes.

Notes:
1. The filter must be fully soaked before the fountain is turned on; Otherwise, the water may not diffuse through the filter and cause overflow.
2. Do not soak the filter in the fountain tank to avoid dust on the surface.

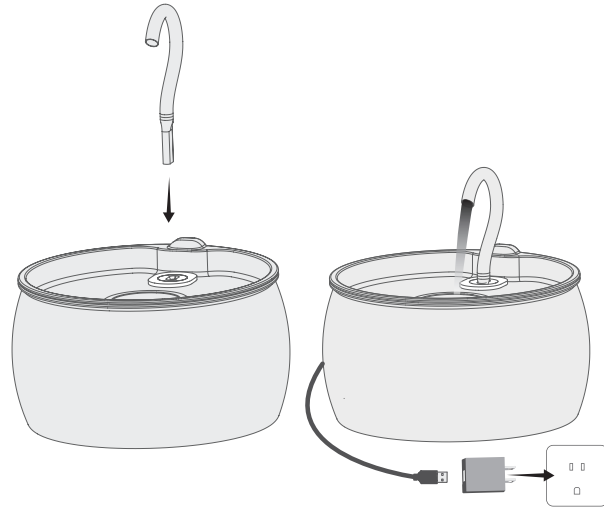


- 2** Put the top cover back on the basin.



Put back the cover to form a seal.
Note: Make sure the pump is fixed in place in the tank.

- 3** Insert the water spout.



Insert the water spout

Connect the power adapter

Tips On Using

Help your cat adjust to it

Take away other water sources and put some catnip near the edge to help him like it.



Place it in a familiar place

Put the KittySpout where they get their water, then pour water in the bowl until the "MAX" line.

Handle it dry

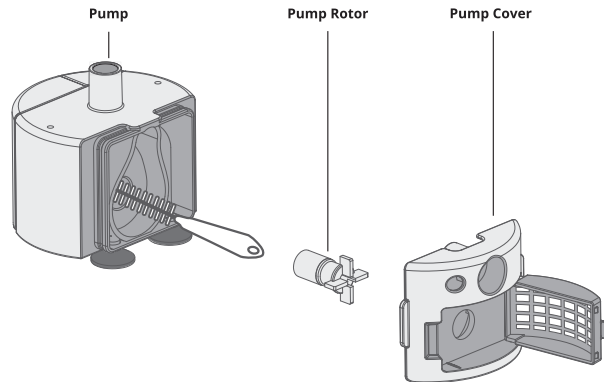
Make sure your hands, the cord and the power adapter are dry, then plug the fountain.

Be patient

All cats are different, some adjust quickly, some might take more days. If they see you play with the water, that could help for them to see it's ok to use it.

Clean The Pump And Fountain Every Two Weeks.

Take off the pump cover and rotor. Use the brush to clean the parts with water.



1. Be sure to shut down and disconnect the power supply for safety when the equipment is not in use.
2. This product is for indoor use only.
3. The power adapter and wire plug must not be flooded during cleaning.
4. This product has an automatic shutdown function when water gets too low.
5. Please disconnect the power supply before maintaining and cleaning the machine.