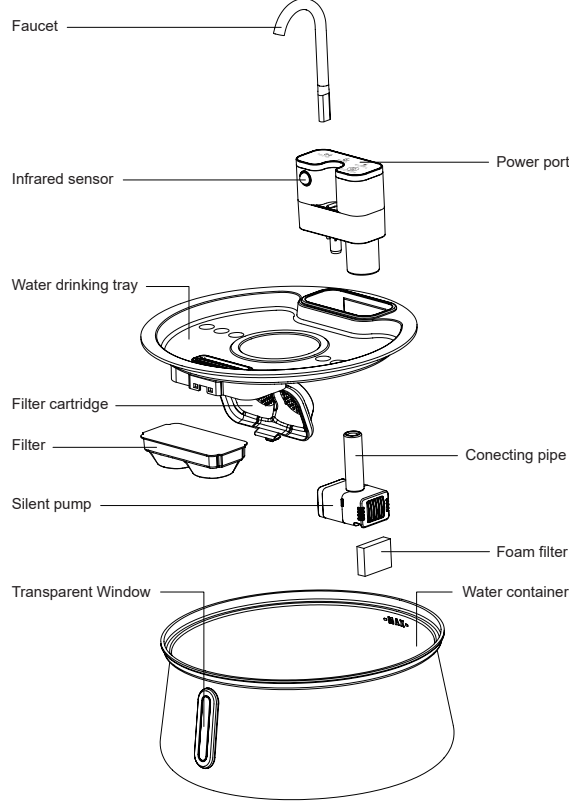


User Manual

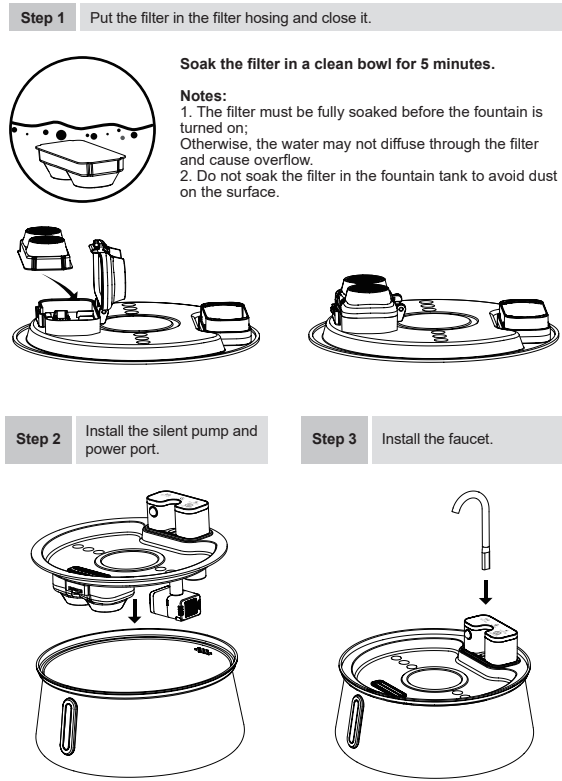
Smart Pet Water Fountain

312-B

Overview

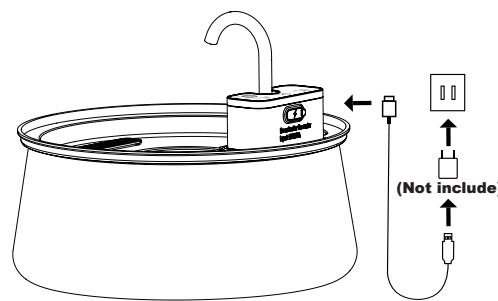


Installation steps

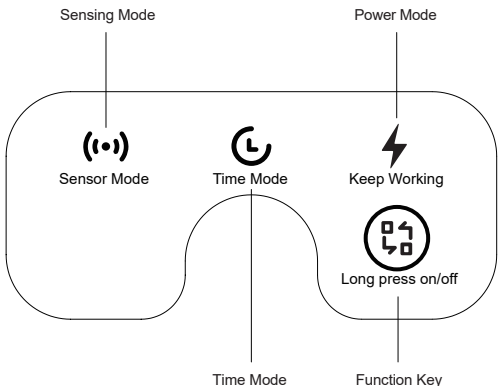


Step 4

Connect the power adaptor.



Features

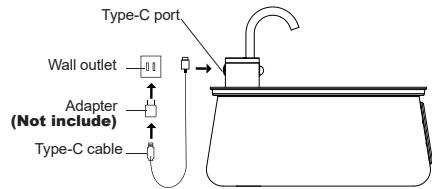


	Long Press on/off
	Sensor mode
	Time mode
	Keep Working

Power supply selection

I. Wall outlet

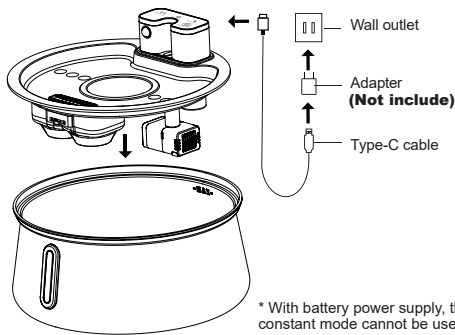
Open the silicone waterproof cover at the power port of the master control module, insert the Type-C connector of the data cable into the power port, insert the other end into the adapter, and then insert the adapter into the wall outlet. Press the power button of the master control module, you can start to use it. (The battery can also be charged.)



* When it is inconvenient to use battery power, please pull out the data cable and close the waterproof cover

II. Battery

The product has a built-in lithium battery. Press the power button of the master control module under sufficient power, you can start to use the product.



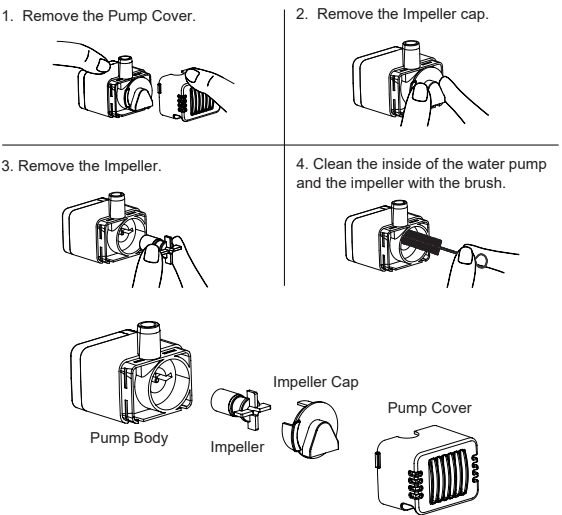
Maintenance and cleaning

I. Daily cleaning and maintenance

1. Disconnect power supply and turn off the product before cleaning; keep the charging port dry.
2. Take out the filter cotton, filter, filter tray, and rinse them with clean water.
3. Immerse the water container, water tray, filter mesh in water and wash them clean.
4. Do not immerse or wash the master control module, nor clean it in a dishwasher.
5. After cleaning the water container, wipe the charging port clean before connecting power.
6. It is recommended to change the drinking water every 3 days. Clean the product before changing water.

II. Cleaning and maintenance of the water pump

In order to ensure that the water pump can continue to operate normally and maintain its service life, the water pump must be cleaned regularly.



Cautions:

1. Be sure to shut down and disconnect the power supply for safety when the equipment is not in use.
2. This product is for indoor use only.
3. The power adapter and wire plug must not be flooded during cleaning.
4. This product is not allowed to run without water .
5. Please disconnect the power supply before maintaining and cleaning the machine.

Matters needing attention

1. Do not rinse/immerse the master control module with water.
2. Do not wash the product with hot water or clean it in a disinfection cabinet.
3. Before using the product and the filter, please wash them with clean water.
4. Replace the filter regularly, and clean the pump regularly and thoroughly.
5. If the product is not used for a long time, Long Press off and pull out the power cord.
6. Make sure to fully charge the master control module and check the remaining water level when going out on holidays.
7. This product is not a toy. Do not let children play with it. The product contains movable or small parts. Let your pet use it only under your supervision.

FAQ

1. With white indicator, the water pump has no water flow out?
The water pump may be blocked, if so, clean it thoroughly. Or the water tube is not connected tightly.
- 2.Red light flashing, the water pump has no water flow out?
The battery is low and needs to be charged
3. After inserting a Type-C charger, the charging indicator does not light up?
Check whether the charger is in full contact with the wall outlet, make sure the power supply is well connected. If the problem still cannot be solved, replace a new adapter or Type-C cable.
4. The noise increases and the water flow decreases?
Thoroughly wash the water pump, clamp out the impeller to clean it.