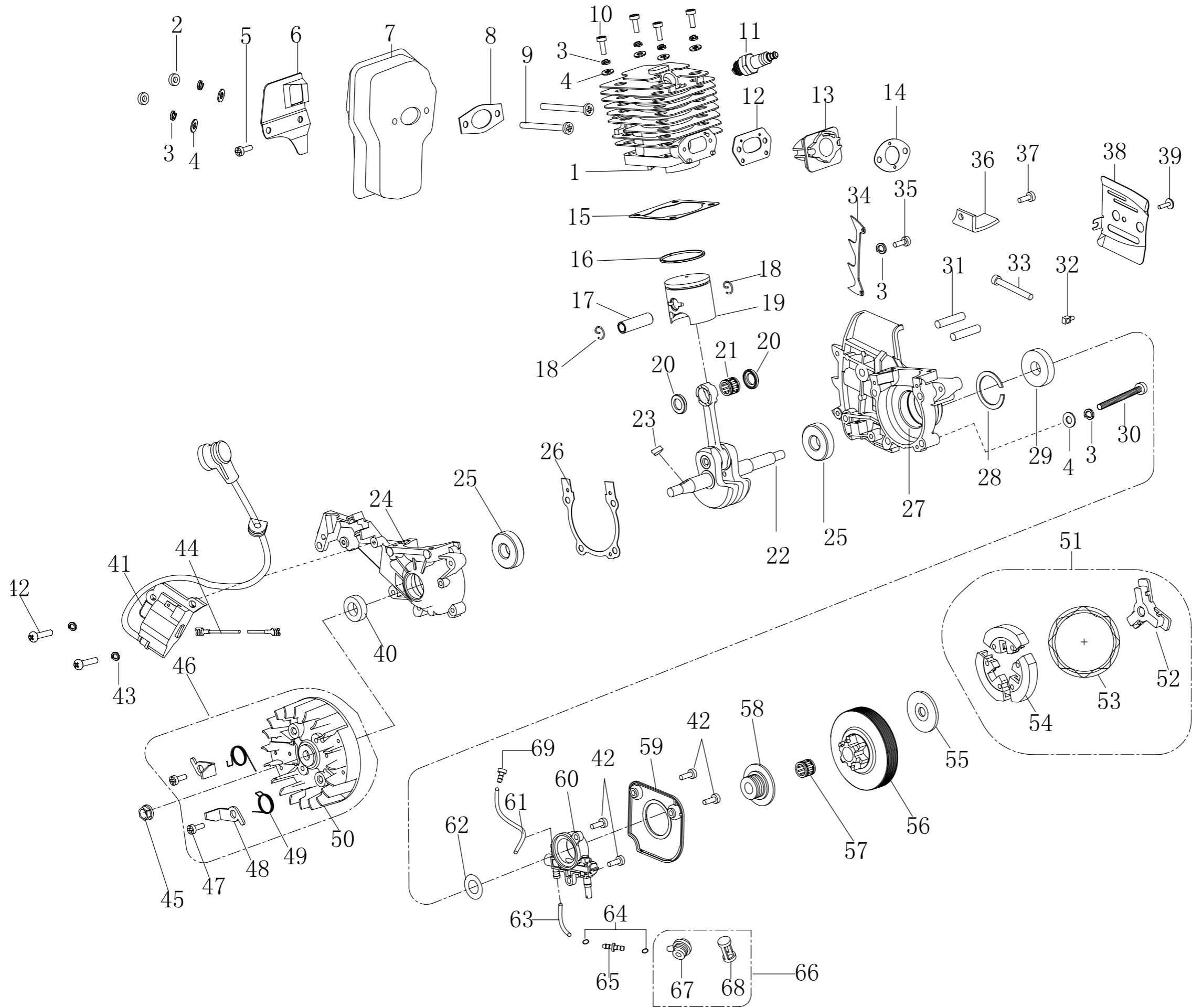


PARTNR.	ARTICLE NUMBER	PART NAME	QTY
1	MZCYD38-5.04.00-00	right cover assembly	1
2	MZCYD38-3.04.00-16	screw M5×40	1
3	MZCYD38-3.04.00-13	shield gland	1
4	MZCYD38-3.04.00-12	heavy brock gland	1
5	MZCYD38-5.04.00-2	front damper	1
6	MZCYD38-3.04.02-00	heavy block	1
7	MZCYD38-3.04.00-7	heavy block spring	1
8	MZCYD38-3.04.00-9	brake torsion rod spring	1
9	MZCYD38-3.04.00-14	washer 5.2×23×1.2	1
10	MZCGB/T6183.1	lock-nut M5	1
11	MZCYD38-3.04.00-6	spring base	1
12	MZCYD38-3.04.00-5	front guard spring	1
13	MZCYD38-3.04.00-15	tensioner cover plate	1
14	MZCGB/T119.23×14	pin 3×14	1
15	MZCYD38-3.04.00-4	main lever	1
16	MZCYD38-3.04.00-3	secondary pull-rod	1
17	MZCGB/T119.23×9	pin 3×9	3
18	MZCYD38-3.04.00-11	brake control rod	1
19	MZCYD45-3.04.00-9	brake spring	1
20	MZCYD45-3.04.00-10	brake strap	1
21	MZCGB/T8454.2×12	tapping screw ST4.2×12	2
22	MZCYD38-3.04.00-1	brake spring cover plate	1
23	MZCYD38-5.04.01-00	right cover	1
24	MZCGB/T846	tapping screw ST4.2×9.5	2
25	MZCGB/T6177.2	nut M8	2
26	MZCYD38-3.05.00-2	air filter cover	1
27	MZCYD38-3.05.01-00	air filter lock nut	1
28	MZCYD38-3.05.00-6	lock nut washer 15×26×1	1
29	MZCYD38-5.01.08.00-00	air filter	1
30	MZCYD38-3.05.00-00	upper cover plate	1
31	MZCYD38-3.05.00-5	anti-freeze block	1
32	MZCYD38-3.05.00-4	shock block	1
33	MZCGB/T8454.8×16	tapping screw ST4.8×16	12
34	MZCYD38-3.00.00-7	dust shield	1
35	MZCYD38-3.00.00-11	choke lever retaining bracket	1
36	MZCYD38-3.00.00-10	choke rod	1
37	MZCYD38-5.02.00-1	bossing	1
38	MZCYD38-5.02.00-00	starter assembly	1
39	MZCGB/T8454.8×13	tapping screw ST 4.8×13	1
40	MZCGB/T96	washer 5	1
41	MZCYD38-3.02.00-6	start stretching wire 3×920	1
42	MZCYD38-3.02.00-2	start plate	1
43	MZCYD38-3.02.00-3	coil-spring gland	1
44	MZCYD38-3.02.00-5	start coil-spring	1
45	MZCYD38-5.02.00-4	start handle	1
46	MZCYD38-5.02.01-00	start cover	1

PARTNR.	ARTICLE NUMBER	PART NAME	QTY
47	MZCGB/T8454.8x19	tapping screw ST4.8x19	1
48	MZCYD38-3.00.00-9	dust cover	1
49	MZCYD38-3.06.04-00	cushion socket	1
50	MZCGB/T26725x14	screw M5x14	5
51	MZCYD38-3.06.03-00	cushion socket	1
52	MZCYD38-3.00.00-8	dust cover	1
53	MZCYD38-3.00.00-4	front handle spring	1
54	MZCYD38-3.00.00-1	front handle	1
55	MZCYD38-3.00.00-13	torsion rod spring cover plate	1
56	MZCGB/T8454.8x25	tapping screw ST4.8x25	5
57	MZCYD38-3.03.06-00	balancer body assembly	1
58	MZCYD38-3.03.00-15	balancer cover	1
59	MZCYD38-3.03.00-14	balancer rubber	1
60	MZCYD38-3.03.00-13	balancer body	1
61	MZCYD38-3.03.00-3	balancer root	1
62	MZCYD38-3.03.05-00	fuel tube assembly	1
63	MZCYD38-3.03.00-1	fuel tube	1
64A	MZCYD38-3.03.00-1A	turn round tube	1
65	MZCYD38-3.03.00-2	fuel tube seat	1
65A	MZCYD38-3.03.00-2A	fuel tube seat	1
66	MZCYD38-3.03.00-12	heavy block	1
67	MZCYD38-3.03.04-00	petrol filter components	1
68	MZCYD38-5.03.01-00	base	1
69	MZCYD38-3.00.00-5	base spring	1
70	MZCYD38-6.03.02-00	petrol cover assembly	1
71	MZCYD38-3.03.03-2	anti-drop plate	2
72	MZCJB/T7757.224.7x3.55	o ring 24.7x3.55	1
73	MZCYD38-6.03.02-1	petrol cover	1
74	MZCYD38-6.03.03-00	oil cover assembly	1
75	MZCJB/T7757.220x3.1	o ring 20x3.1	1
76	MZCYD38-6.03.03-1	oil cover	1
77	MZCYD38-3.01.11.03-00	ground conductor	1
78	MZCYD38-3.01.11.04-00	extinction switch	1
79	MZCYD38-3.03.00-4	front cap	1
79A	MZCYD38-3.00.00	primer pump	1
80A	MZCYD45-4.03.00-13	pump tube	1
81	MZCGB/T119.25x24	pin 5x24	1
82	MZCYD38-5.03.00-9	trigger control rack	1
83	MZCYD38-3.03.00-8	trigger torsion rod spring	1
84	MZCYD38-3.03.00-7	trigger	1
85	MZCYD38-5.00.00-6	throttle	1
86	MZCYD38-5.03.00-10	handle cover	1
87	MZCYD38-3.03.00-16	circlip for nozzle	1
88	MZCYD38-3.03.00-5	vent tube	1
89	MZCGB/T8454.2x1	screw 4.2x1	1

PARTNR.	ARTICLE NUMBER	PART NAME	QTY
90	MZCYD38-3.01.06.00-00	carburetor	1
91	MZCYD38-3.01.00.03-00	carburetor screw	2
92	MZCYD38-3.01.00.02-00	air intake support	1
93	MZCYD38-5.06.01-00	engine base	1
94	MZCYD38-3.08.00-00	accessories	1
95	MZCGB38	bar cover	1
96	GA-4691SG	chain link	53
97	MZCGB38	14"Guide bar	1



PARTNR.	ARTICLE NUMBER	PART NAME	QTY
1	MZCYD38-3.01.00-1	cylinder body	1
2	MZCGB/T6185.1	nut M5	2
3	MZCGB/T93	washer 5	11
4	MZCGB/T97.1	washer 5	10
5	MZCGB/T2672M5x12	screw M5x12	2
6	MZCYD38-3.01.09.00-1	silencer cover plate	1
7	MZCYD38-3.01.09.00-00	silencer body	1
8	MZCYD38-3.01.00-6	silencer sealing plate	1
9	MZCYD38-3.01.00-10	muffler connecting screw	1
10	MZCGB/T61915x20	screw M5x20	4
11	MZCYD38-3.01.11.05-00	spark plug NGK BPM6a	1
12	MZCYD38-3.01.00-7	air intake tube sealing plate	1
13	MZCYD38-3.01.00-3	air intake tube	1
14	MZCYD38-3.01.00-8	carburetor sealing plate	1
15	MZCYD38-3.01.00-5	cylinder sealing plate	1
16	MZCYD38-3.01.03.00-2	piston ring	1
17	MZCYD38-3.01.03.00-3	piston pin	1
18	MZCYD38-3.01.03.00-4	piston pin circlip	2
19	MZCYD38-3.01.03.04-00	piston	1
20	MZCYD38-3.01.03.00-5	needle bearing ring	2
21	MZCYD38-3.01.03.02-00	needle bearing 10x14x11	1
22	MZCYD38-3.01.03.01-00	crank shaft components	1
23	MZCGB/T1099	semicircular key 3x3.5x10	1
24	MZCYD38-3.01.01.00-1	left crank case	1
25	MZCGB/T2766201	bearing 6201 grade D 12x32x10	2
26	MZCYD38-3.01.01.00-3	case body sealing plate	1
27	MZCYD38-3.01.01.00-2	right crank case	1
28	MZCGB/T893.132	shield ring 32	1
29	MZCYD38-3.01.01.01-00	oil seal 12x32x5.5	1
30	MZCGB/T61915x30	screw M5x30	4
31	MZCGB/T900	double-screw bolt AYM8-M8x26-8.8	2
32	MZCYD38-3.01.00-9	tension block	1
33	MZCGB/T9074.1	adjust screw M5x48	1
34	MZCYD45.01.00-21	spike bumper	1
35	MZCGB/T2672M5x12	screw M5x12	1
36	MZCYD38-3.01.00-15	chain catcher	1
37	MZCYD38-3.01.00-16	chain catcher screw	1
38	MZCYD38-3.01.00-4	damper	1
39	MZCGB/T2672	screw M4x10	1
40	MZCYD38-3.01.01.02-00	oil seal 12x22x7	1
41	MZCYD38-3.01.11.01-00	igniter	1
42	MZCGB/T26724x14	screw M4x14	6
43	MZCGB/T934	washer 4	2

PARTNR.	ARTICLE NUMBER	PART NAME	QTY
44	MZCYD38-3.01.11.02-00	extinction conductor	1
45	MZCGB/T6177.2	nut M8x1	1
46	MZCYD38-3.01.10.00-00	flywheel assembly	1
47	MZCYD38-3.01.10.00-3	pusher dog screw	2
48	MZCYD38-3.01.10.00-1	pusher dog	2
49	MZCYD38-3.01.10.00-2	torsion rod spring	2
50	MZCYD38-3.01.10.01-00	flywheel	1
51	MZCYD38-3.01.13.00-00	clutch assembly	1
52	MZCYD38-3.01.13.01-1	retainer	1
53	MZCYD38-3.01.13.01-3	clutch extension spring	1
54	MZCYD38-3.01.13.01-2	shoe block	3
55	MZCYD38-3.01.13.00-2	clutch adjusting washer	1
56	MZCYD38-3.01.13.00-1	clutch shell	1
57	MZCYD38-3.01.00.01-6	needle bearing 10x13x13	1
58	MZCYD38-3.01.00-11	oil pump gear	1
59	MZCYD38-3.00.00-12	cover plate	1
60	MZCYD38-3.01.15.00-0	oil pump	1
61	MZCYD38-3.01.00-13	oil outgoing tube 3x6.5x80	1
62	MZCYD38-3.01.00-12	worm washer 10x18x1	1
63	MZCYD38-3.00.00-2	oil ingoing tube 3.5x6.5x75	1
64	MZCYD38-3.00.00-17	oil tube circlip	2
65	MZCYD38-3.00.00-3	tie-in	1
66	MZCYD38-3.00.00-16	base assembly	1
67	use 66	nozzle	1
68	use 66	filter net	1
69	MZCYD38-3.01.00-14	spray nozzle	1

GTM
PROFESSIONAL®

www.gtmprofessional.com