

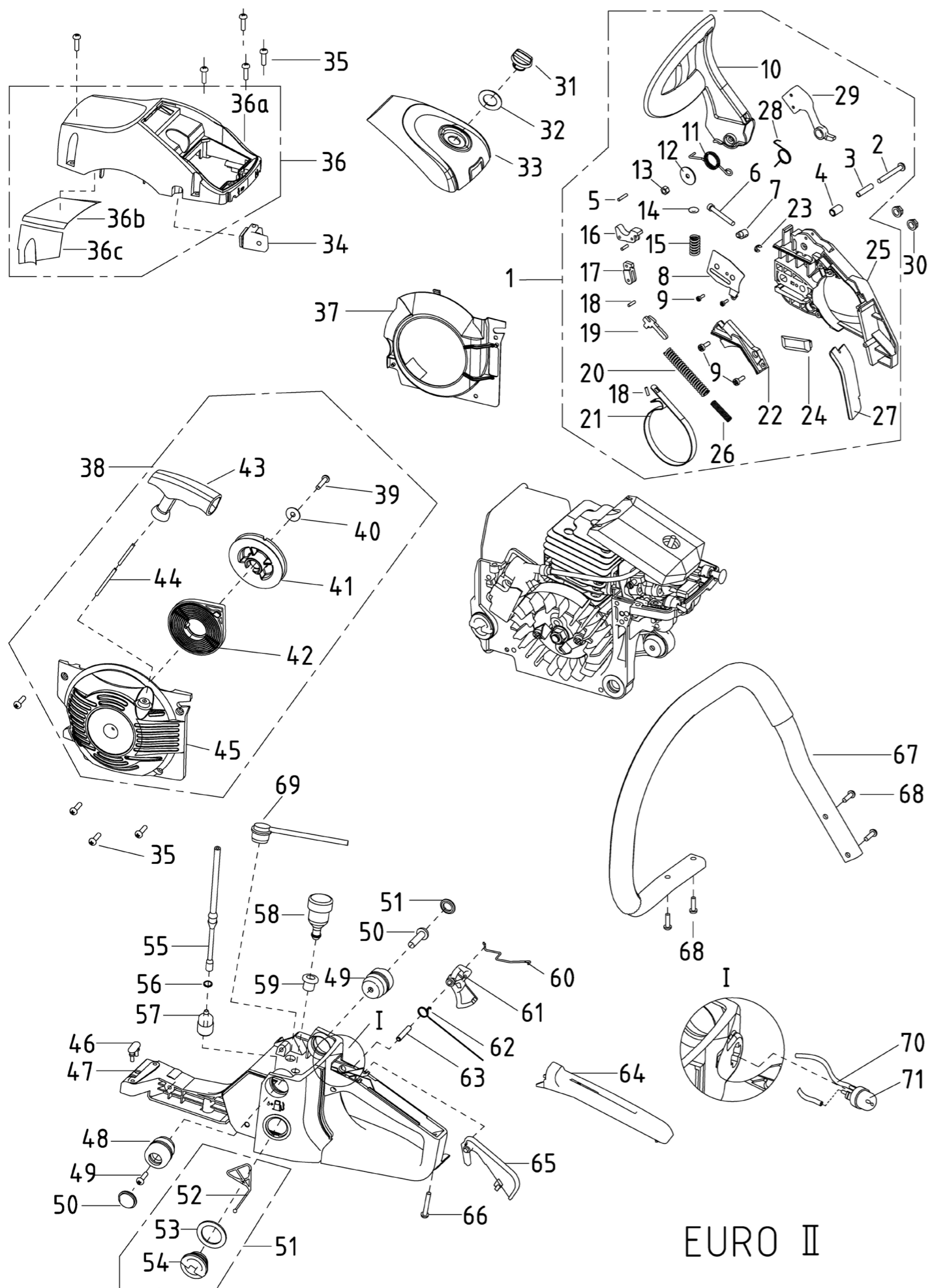
**GTM**  
**PROFESSIONAL®**

## **Parts List Book GTC50**

*English*



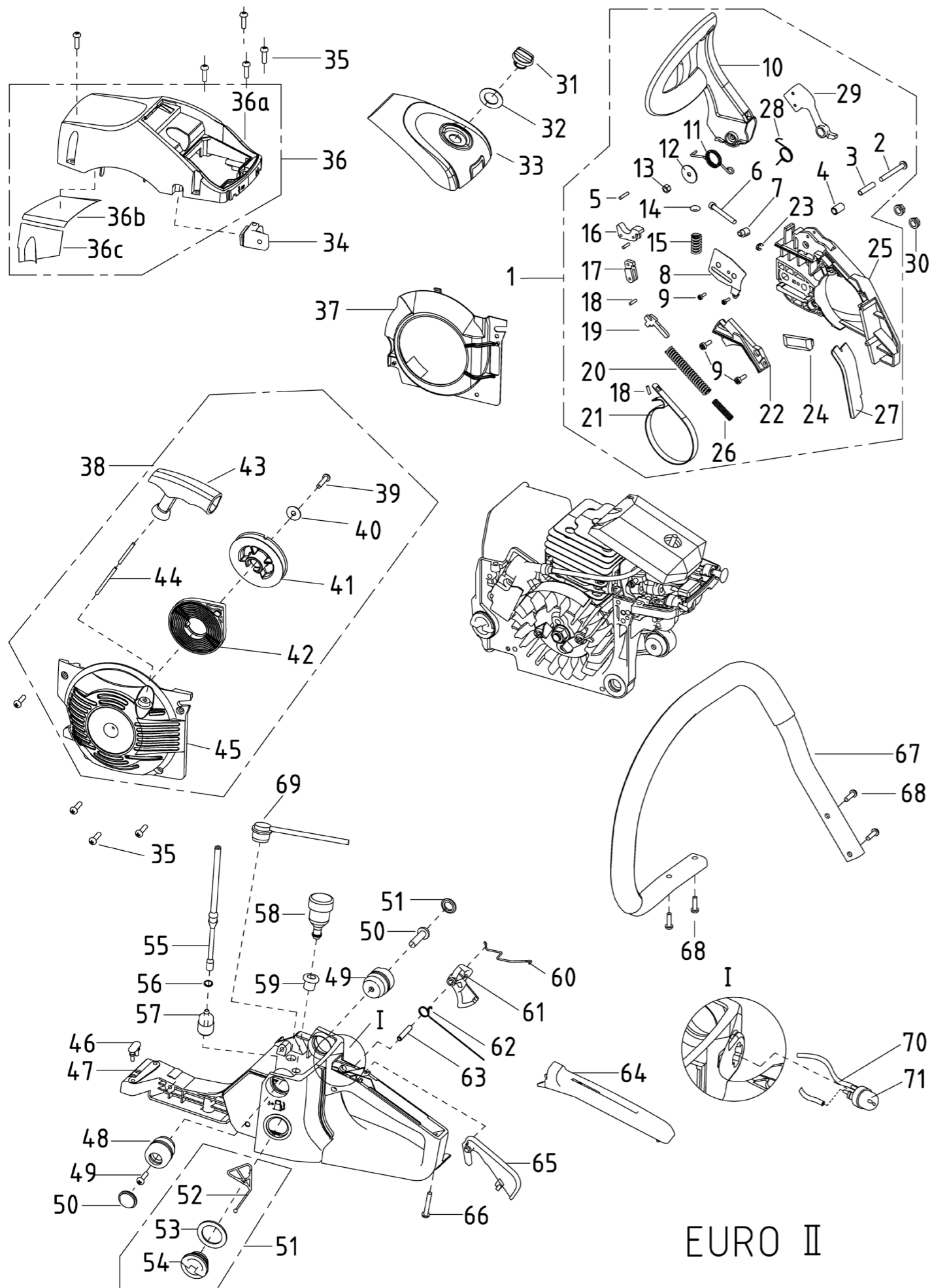
**[www.gtmprofessional.com](http://www.gtmprofessional.com)**



EURO II

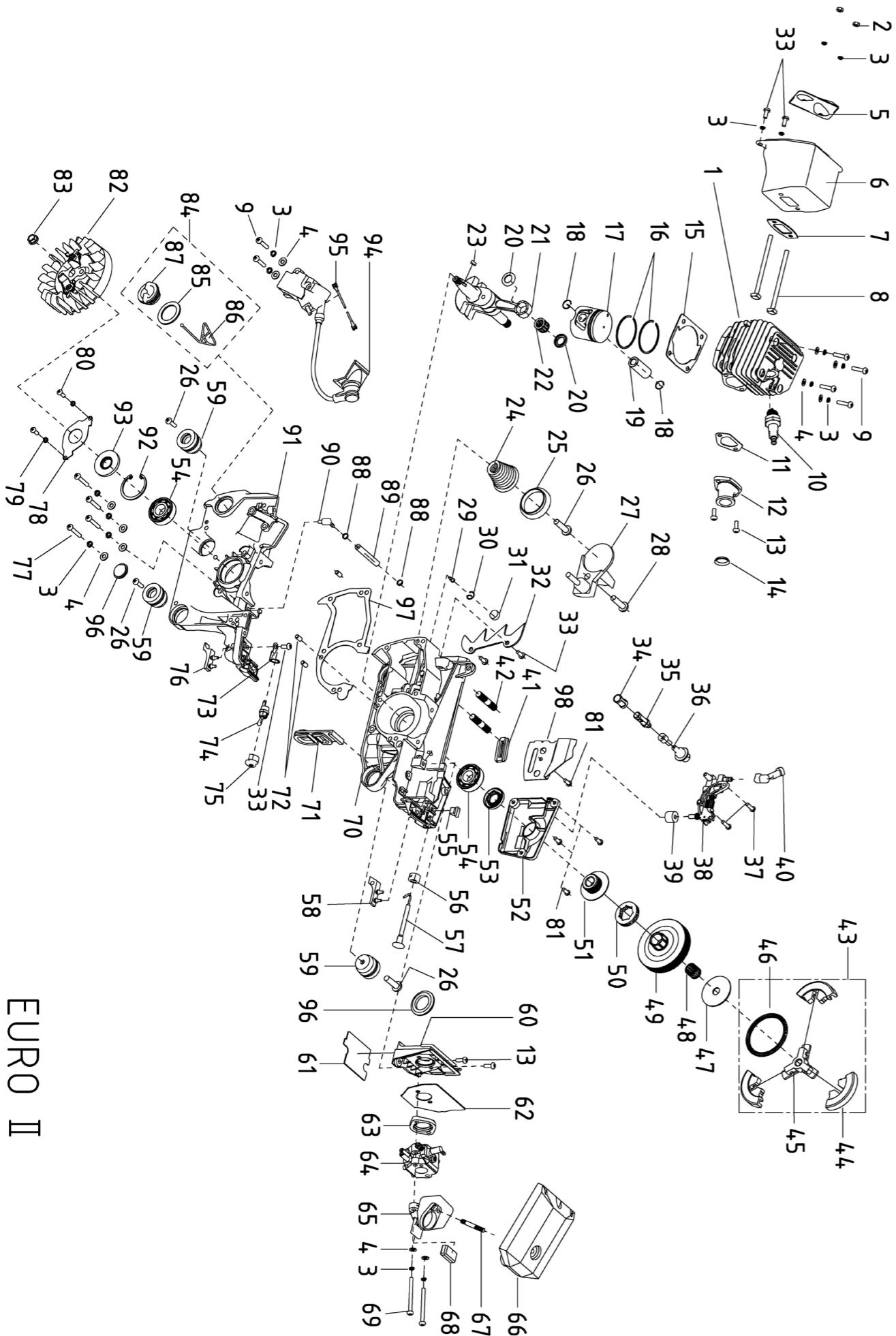
YD-KU01-50A base unit

PARTNR.	ARTICLE NUMBER	DESCRIPTION	QTY
1	MZCYD50.04.00-00	right cover assembly	1
2	MZCYD38-3.04.00-16	screw M5x40	1
3	MZCYD38-3.04.00-13	shield pipe	1
4	MZCYD38-3.04.00-12	pipe	1
5	MZCGB/T119.2	pin 3x14	1
6	MZCYD45.04.00-18	tightener screw	1
7	MZCYD45.04.00-19	tension block	1
8	MZCYD45.04.00-11	tensioner cover plate	1
9	MZCGB/T845	tapping screw ST4.2x9.5	4
10	MZCYD45-4.04.00-2	front damper	1
11	MZCYD38-3.04.00-8	brake torsion rod spring	1
12	MZCYD45-3.04.00-10	washer 5.2x20x1.2	1
13	MZCGB/T6183.1	nut M5	1
14	MZCYD38-3.04.00-6	spring base	1
15	MZCYD38-3.04.00-5	front damper spring	1
16	MZCYD38-3.04.00-4	main level	1
17	MZCYD38-3.04.00-3	secondary pull-rod	1
18	MZCGB/T119.2	pin 3x9	3
19	MZCYD45.04.00-14	brake control rod	1
20	MZCYD45.04.00-9	brake spring	1
21	MZCYD45-4.04.00-10	brake strap	1
22	MZCYD45-4.04.00-1	brake spring cover plate	1
23	MZCYD45.04.00-20	position block	1
24	MZCYD45.01.00-16	chain guide block	1
25	MZCYD45-4.04.01-00	right cover	1
26	MZCYD45 .04. 00-10	secondary brake spring	1
27	MZCYD45-4.04.00-7	dust shield	1
28	MZCYD38-3.04.00-7	heavy block spring	1
29	MZCYD38-3.04.02-00	heavy block	1
30	MZCGB/T6177.1	nut M8	2
31	MZCYD45.05.01-00	air filter lock nut	1
32	MZCYD45.05.00-2	lock nut washer 15x26x1	1
33	MZCYD45-4.05.00-1	air filter cover	1
34	MZCYD45-4.00.00-6	idle adjusting guide set	1
35	MZCGB/T2672	screw M5x16	9
36	MZCYD45-4.00.01-00	upper cover assembly	1
36a	MZCYD45-4.00.01-1	upper cover plate	1
36b	MZCYD45-4.00.01-2	upper heat isolation plate	1
36c	MZCYD45-4.00.01-3	side heat isolation plate	1
37	MZCYD45-4.02.00-1	guide flow cover	1
38	MZCYD45-4.02.00-00	starter assembly	1
39	MZCGB/T845	tapping screw M4.8x14	1



EURO II  
YD-KU01-50A base unit

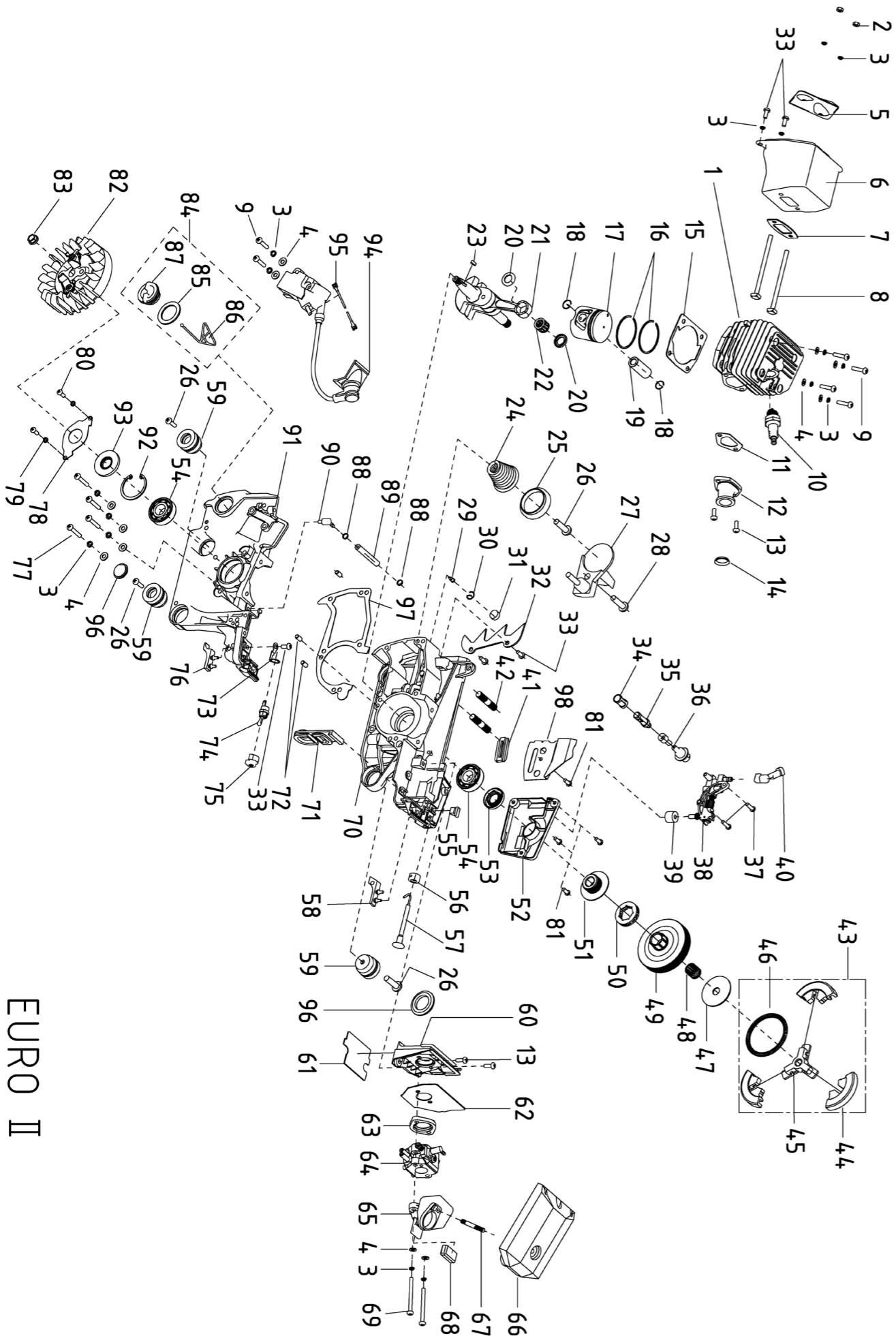
PARTNR.	ARTICLE NUMBER	DESCRIPTION	QTY
40	MZCGB/T96	washer 5	1
41	MZCYD45.02.00-2	starter plate	1
42	MZCYD45.02.00-5	start coil spring	1
43	MZCYD38-5.02.00-4	start handle	1
44	MZCYD45.02.00-7	start stretching wire	1
45	MZCYD45-4.02.01-00	starter cover	1
46	MZCYD45. 03. 00-1	shock rubber	1
47	MZCYD45.03.01-00	base	1
48	MZCYD45.03.02-00	shock rubber gland	2
49	MZCYD50.00.00-9	screw	2
50	MZCYD45.00.00-2	dust cover	2
51	MZCYD38-3.03.02-00	petrol cap assembly	1
52	MZCYD38-3.03.02-2	anti-drop plate	1
53	MZCYD38-3.03.02-3	packing washer 24x34x1.5	1
54	MZCYD38-3.03.02-1	petrol cover	1
55	MZCYD45.03.00-2	fuel tube	1
56	MZCYD45.03.00-15	fuel tube circlip	1
57	MZCYD45.03.03-00	petrol filter components	1
58		balancer	1
59	MZCYD38-3.03.00-3	balancer root	1
60	MZCYD45.03.00-25	throttle rod	1
61	MZCYD45.03.00-11	trigger	1
62	MZCYD45.03.00-12	trigger torsion rod spring	1
63	MZCGB/T119.2	pin6x22	1
64	MZCYD45.03.00-14	handle cover	1
65	MZCYD45.03.00-13	trigger control rack	1
66	MZCGB/T845	tapping screw ST4.2x25	1
67	MZCYD45-2.06.00-00	front handle assembly	1
68	MZCGB/T845	tapping screw M4.8x16	4
69	MZCYD45-4.03.00-11	scavenge nozzle	1
70	MZCYD45-4.03.00-13	pump tube	1
71	MZCYD38-3.00.00	primer bulb	1



YD-KU01-50A (engine unit\_B)

EURO II

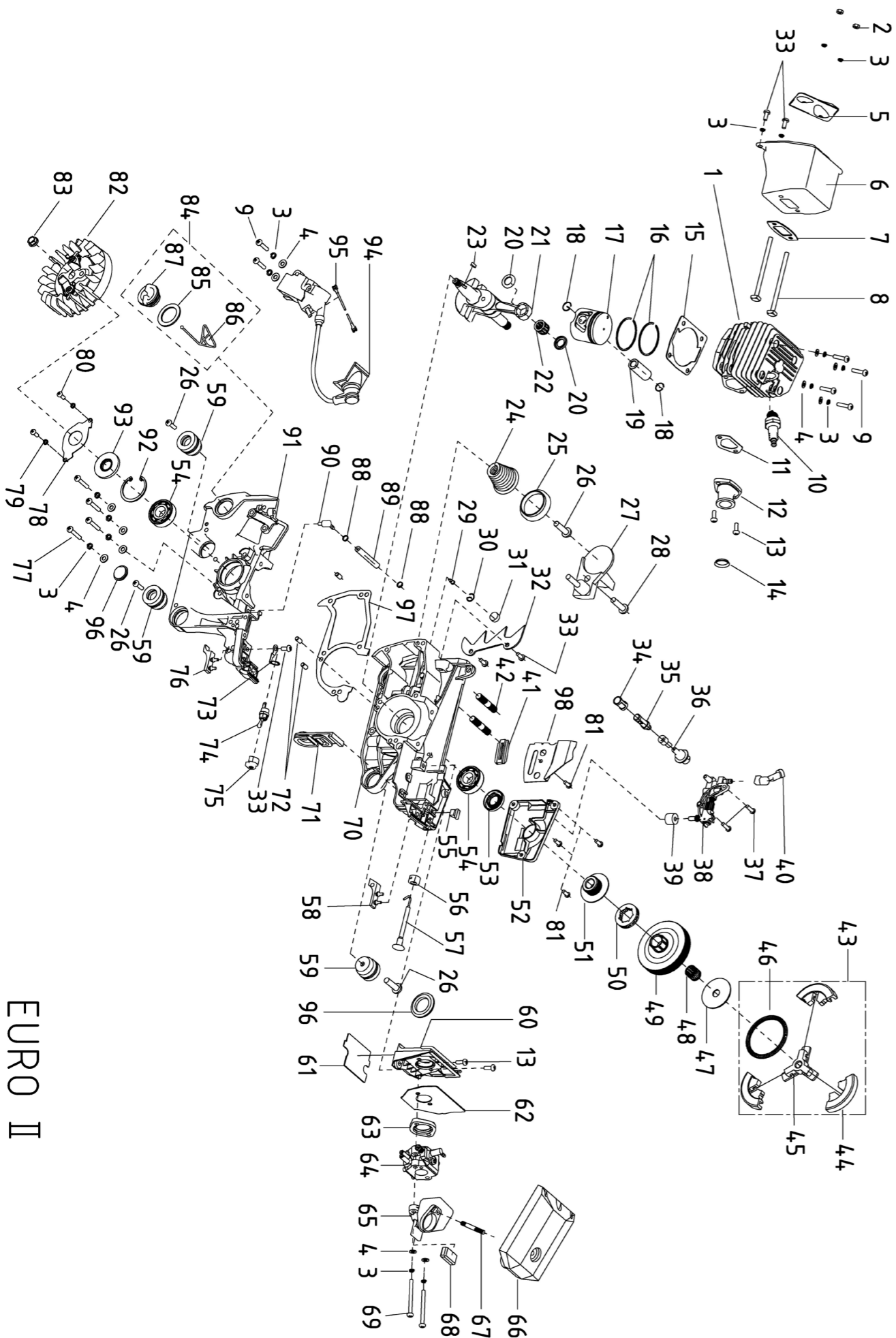
PARTNR.	ARTICLE NUMBER	DESCRIPTION	QTY
1	MZCYD50.01.02-1B	cylinder	1
2	MZCGB/T6170	nut M5	2
3	MZCGB/T93	washer 5	17
4	MZCGB/T97.1	washer 5	13
5	MZCYD45.01.09-1	muffler cover plate	1
6	MZCYD45.01.09.01-00	muffler body	1
7	MZCYD45.01.00-2	muffler sealing plate	1
8	MZCYD45.01.00-24	muffler connecting screw	2
9	MZCGB/T6191	screw M5x20	6
10	MZCYD45.01.11.04-00	spark plug	1
11	MZCYD45.01.02-2	air intake tube sealing plate	1
12	MZCYD45.01.02.01-00	air intake tube	1
13	MZCGB/T2672	screw M5x12	4
14	MZCYD45.01.00-17	hold coil	1
15	MZCYD45.01.00-1	cylinder sealing plate	1
16	MZCYD50.01.03-2	piston ring	2
17	MZCYD50.01.03.00-00B	piston	1
18	MZCYD45.01.03-4	piston pin circlip	2
19	MZCYD50.01.03-3B	piston pin	1
20	MZCYD45.01.03-5	needle bearing ring	2
21	MZCYD45.01.03.01-00	crank shaft components	1
22	MZCYD45.01.03.02-00	needle bearing 11x15x12.5	1
23	MZCGB/T1099	semicircular key 3x3.5x10	1
24	MZCYD45.00.00-4	conical spring base	1
25	MZCYD45.00.00-3	conical spreader base	1
26	MZCGB/T845	tapping screw ST4.8x16	4
27	MZCYD45.00.00.01-00	chain shield	1
28	MZCGB/T2672	screw M5x16	1
29	MZCYD45.01.01.02-2	aeration jet	1
30	MZCYD45.01.01.02-3	aeration jet circlip	1
31	MZCYD45.01.00-22	sponge transition block	1
32	MZCYD45.01.00-21	pinion rack	1
33	MZCGB/T2672	screw M5x10	5
34	MZCYD45.01.00.04-2	oil filter screen	1
35	MZCYD45.01.00.04-1	oil filter	1
36	MZCYD45.01.00-12	oil tube	1
37	MZCGB/T2672	screw M4x14	2
38	MZCYD45.01.15-00	oil pump	1



YD-KU01-50A (engine unit\_B)

EURO II

PARTNR.	ARTICLE NUMBER	DESCRIPTION	QTY
39	MZCYD45.01.00-23	sponge transition coil	1
40	MZCYD45.01.00-13	nozzle	1
41	MZCYD45.01.00-16	chain guide block	1
42	MZCGB/T900	double-screw bolt AYM8-M8x26-8.8	2
43	MZCYD45.01.13.01-00	clutch	1
44	MZCYD45.01.13.01-2	shoe block	3
45	MZCYD45.01.13.01-1	retainer	1
46	MZCYD45.01.13.01-3	clutch spring	1
47	MZCYD45.01.00-19	clutch adjusting washer	1
48	MZCYD45.01.00.10-00	needle bearing 12x15x14.5	1
49	MZCYD45.01.13-1	clutch shell	1
50	MZCYD45.01.00-26	sprocket	1
51	MZCYD45.01.00.06-00	worm	1
52	MZCYD45.01.00-15	cover plate	1
53	MZCYD45.01.00.09-00	oil seal 15x28x4.5	1
54	MZCGB/T276	bearing 6202D grade 15x35x11	2
55	MZCYD45.01.00-8	cushion block	1
56	MZCYD45.01.00-7	choke rod fixation root	1
57	MZCYD45.01.00.03-00	choke rod	1
58	MZCYD45.01.00-11	right shock block	1
59	MZCYD45.01.00.07-00	shock seat	3
60	MZCYD45.01.00.01-00	air intake tube support	1
61	MZCYD45.01.00-4	tie plate	1
62	MZCYD45.01.00-3	sealing plate of air intake support	1
63	MZCYD45.01.00-14	air intake tube flange	1
64	MZCYD45.01.06-00	carburetor	1
65	MZCYD45.01.00.02-00	air intake socket	1
66	MZCYD45.01.08-00	air filter	1
67	MZCGB/T899	double-screw bolt GM5-M5x30	1
68	MZCYD45.01.00-5	cushion of air intake socket	1
69	MZCGB/T2672	screw M5x50	2
70	MZCYD45.01.01.02-1	right case	1
71	MZCYD45.01.00-6	dust plate	1
72	MZCGB/T119.2	pin 5x10	3
73	MZCYD45.01.11-2	ground strip	1
74	MZCYD45.01.11.03-00	flameout switch	1
75	MZCYD45.01.11-1	flameout switch socket	1



PARTNR.	ARTICLE NUMBER	DESCRIPTION	QTY
76	MZCYD45.01.00-10	left shock block	1
77	MZCGB/T6191	screw M5x25	5
78	MZCYD45.01.00-20	oil shield	1
79	MZCGB/T2672	screw M4x8	2
80	MZCGB/T93	washer 4	2
81	MZCGB/T2672	screw M4x10	4
82	MZCYD45.01.10.01-00a	flywheel assembly	1
83	MZCGB/T6177.2	nut M8x1	1
84	MZCYD38-3.03.03-00	oil cap assembly	1
85	MZCYD45.01.00.05-3	sealing washer20x30x2	1
86	MZCYD45.01.00.05-2	anti-drop plate	1
87	MZCYD45.01.00.05-1	oil cover	1
88	MZCYD45.01.01.01-3	suction tube circlip	2
89	MZCYD45.01.01.01-2	suction tube 2.5x6x105	1
90	MZCYD45.01.01.03-00	suction jet	1
91	MZCYD45.01.01.01-1	left case	1
92	MZCGB/T893.1	shield ring 35	1
93	MZCYD45.01.00.08-00	oil seal 15x35x4.5	1
94	MZCYD45.01.11.01-00	igniter	1
95	MZCYD45-4.01.11.02-00	extinction conductor	1
96	MZCYD45.00.00-9	dust cover	2
97	MZCYD45.01.01-1	case body sealing plate	1
98	MZCYD45.01.00-18	damper	1

YD-KU01-50A (engine unit\_B)

EURO II

**GTM**  
**PROFESSIONAL®**

[www.gtmprofessional.com](http://www.gtmprofessional.com)