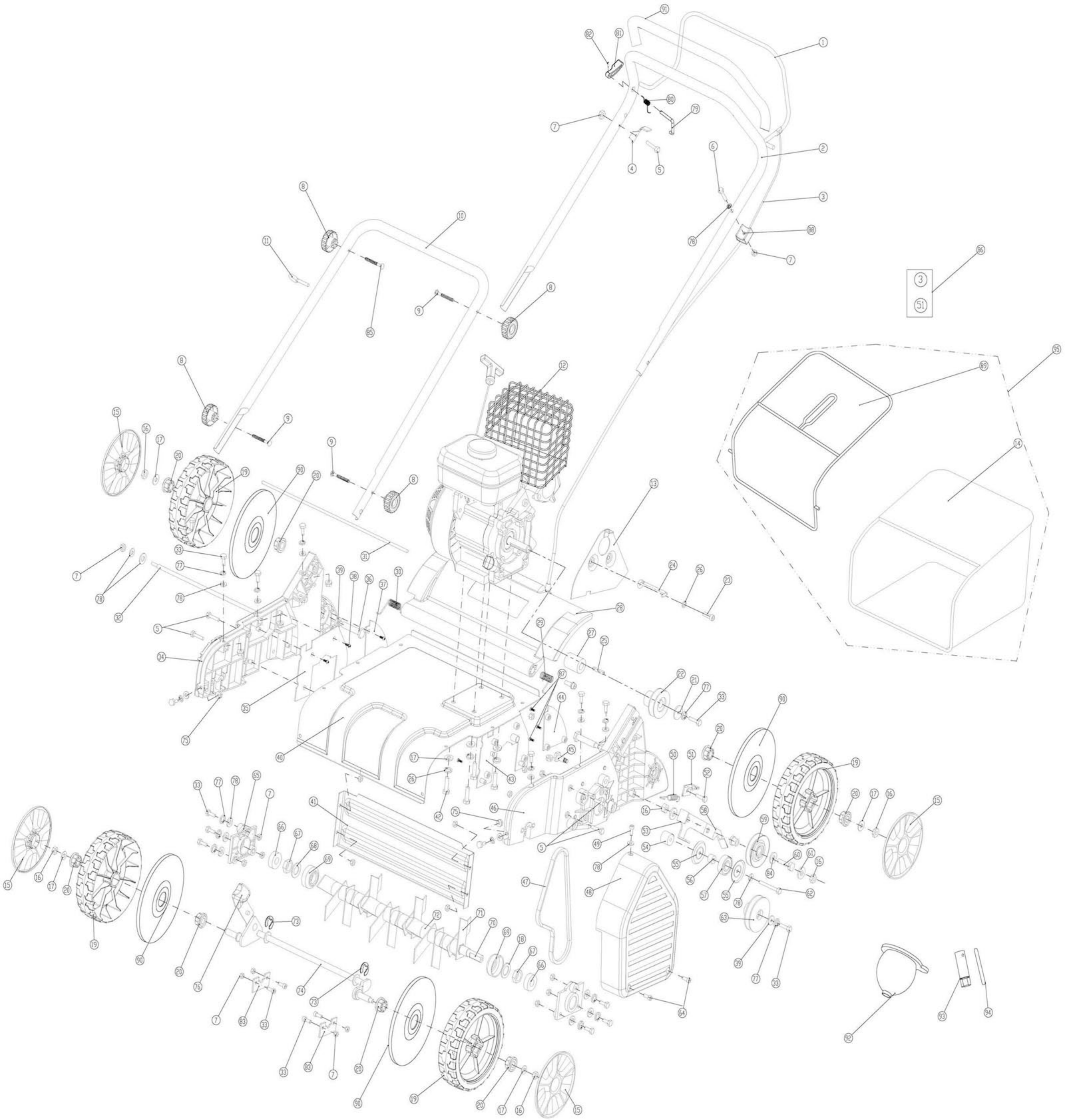
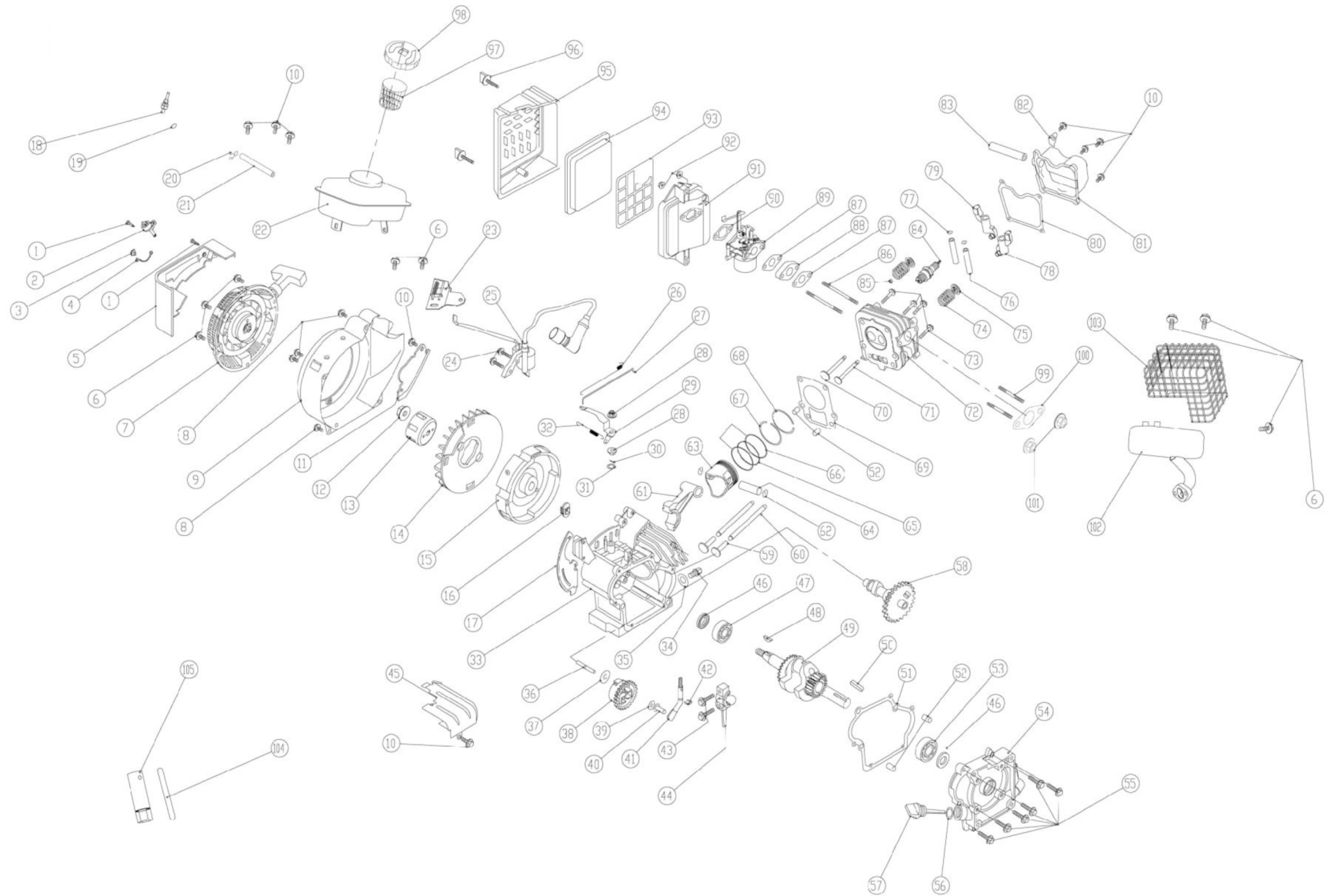


## VeGA GT 5654

| No. | ID zboží           | Název               |
|-----|--------------------|---------------------|
| 1   | 505654904233P433C  | ovládací páka       |
| 2   | 505654904222LY     | madlo vrchní        |
| 3   | 505654904505       | ovládací lanko      |
| 4   | 505654430225       | aretace             |
| 5   | 505654B124005      | šroub               |
| 6   | 505654B124006      | šroub               |
| 7   | 505654B217004      | matic               |
| 8   | 505654401009P433C  | křídlová matic      |
| 9   | 505654B103001      | šroub               |
| 10  | 505654904221LY     | madlo spodní        |
| 11  | 505654904227       | háček               |
| 12  | 50565400917ZAP288C | kryt                |
| 13  | 505654904202       | krycí panel         |
| 14  | 505654904902LUX    | plátno koše         |
| 15  | 505654904005BH     | kryt kola           |
| 16  | 505654B217005      | matic               |
| 17  | 505654B501008      | podložka            |
| 18  | 505654904237       | podložka            |
| 19  | 505654428017       | kolo                |
| 20  | 505654428601D      | ložisko             |
| 21  | 505654904226       | podložka            |
| 22  | 505654904233       | řemenice            |
| 23  | 505654B304008      | šroub               |
| 24  | 505654904213       | držák               |
| 25  | 505654904249       | klínek              |
| 26  | 505654B519005      | podložka            |
| 27  | 505654904225       | pouzdro             |
| 28  | 505654904003P433C  | zadní ochranný kryt |
| 29  | 505654904501       | pružina levá        |
| 30  | 505654904502       | pružina pravá       |
| 31  | 505654904217       | hřídel              |
| 32  | 505654904234       | hřídel              |
| 33  | 505654B125007      | šroub               |
| 34  | 505654904001       | nosná deska pravá   |
| 35  | 505654904008       | kryt velký pravý    |
| 36  | 505654904216       | hřídel zadní        |
| 37  | 505654904009       | kryt malý pravý     |
| 38  | 505654B400023F     | šroub               |
| 39  | 505654904210       | podložka            |
| 40  | 505654904201LY     | šasi                |
| 41  | 505654904219       | deska               |
| 42  | 505654B125004      | šroub               |
| 43  | 505654904010       | kryt velký levý     |
| 44  | 505654904011       | kryt malý levý      |
| 45  | 505654904212       | šroub               |
| 46  | 505654904002       | nosná deska levá    |
| 47  | 505654904903       | klínový řemen       |
| 48  | 505654904004P433C  | kryt řemenu         |

| No. | ID zboží          | Název                |
|-----|-------------------|----------------------|
| 49  | 505654B125001     | šroub                |
| 50  | 505654904503      | pružina              |
| 51  | 505654904206G     | držák                |
| 52  | 505654304024      | šroub                |
| 53  | 505654904203      | držák                |
| 54  | 505654904230      | pouzdro              |
| 55  | 505654904228      | deska kladky         |
| 56  | 505654904229      | vymezovací podložka  |
| 57  | 505654904601      | ložisko              |
| 58  | 505654904231      | držák                |
| 59  | 505654904220      | řemenice             |
| 60  | 505654B125009     | šroub                |
| 61  | 505654904208      | podložka             |
| 62  | 505654B124007     | šroub                |
| 63  | 505654904232      | řemenice             |
| 64  | 505654B304024     | šroub                |
| 65  | 505654904006      | držák ložiska        |
| 66  | 505654904602      | ložisko              |
| 67  | 505654B218012     | matic                |
| 68  | 505654904209      | podložka             |
| 69  | 505654904013      | kryt                 |
| 70  | 505654904214      | hřídel               |
| 71  | 505654904218      | nůž                  |
| 72  | 505654904007      | pouzdro              |
| 73  | 505654B282011     | zajišťovací podložka |
| 74  | 505654904215      | náprava              |
| 75  | 505654B235001     | matic                |
| 76  | 505654428038P433C | nastavení výšky      |
| 77  | 505654B519004     | podložka             |
| 78  | 505654B501007     | podložka             |
| 79  | 505654904204P433C | hák                  |
| 80  | 505654904504      | pružina              |
| 81  | 505654904015P433C | páka                 |
| 82  | 505654B569003     | kolík                |
| 83  | 505654904211      | držák nápravy        |
| 84  | 505654904205      | podložka             |
| 85  | 505654B103002     | šroub                |
| 86  | 505654904901      | ovládací lanko set   |
| 87  | 505654B400022F    | šroub                |
| 88  | 505654904014      | kostka               |
| 89  | 505654904224P288C | rám koše             |
| 90  | 505654428019      | vnitřní kryt         |
| 91  | 505654904300      | měkčená rukojeť      |
| 92  | 505654904016      | trychtýř             |
| 93  | 505654917248      | klíč na svíčku       |
| 94  | 505654917247      | hřídelka             |
| 95  | 505654904905LUX   | koš komplet          |





| No. | ID Zboží    | Název                               |
|-----|-------------|-------------------------------------|
| 1   | B400022F    | cross head screw ST4.2x9.5          |
| 2   | 917200      | fuel lock                           |
| 3   | 917010      | switch                              |
| 4   | 917700      | flameout wire                       |
| 5   | 917001      | panel                               |
| 6   | B131006     | hexagon bolt with flang M6X10       |
| 7   | 917201P288C | starter assy                        |
| 8   | B131004     | hexagon bolt with flang M6X14       |
| 9   | 917242P288C | housing                             |
| 10  | B131001     | hexagon bolt with flang M6X12       |
| 11  | 917203      | front deflector plate               |
| 12  | B235005     | hexagon flange nut M12              |
| 13  | 917204      | starting bowl                       |
| 14  | 917002      | fan                                 |
| 15  | 917205      | flywheel                            |
| 16  | 917003      | wire frame                          |
| 17  | 917206      | rear deflector plate                |
| 18  | 917207      | fuel nozzle                         |
| 19  | B701649     | "o" ring $\Phi$ 6.7X1.9             |
| 20  | 917208      | fuel pipe clip                      |
| 21  | 917301      | fuel pipe                           |
| 22  | 917243P288C | fuel tank                           |
| 23  | 917210      | governor base                       |
| 24  | B131007     | hexagon bolt with flang M6X21       |
| 25  | 917701      | Ignition coil                       |
| 26  | 917500      | carbretor spring                    |
| 27  | 917211      | carbretor lever                     |
| 28  | B228001     | hexagon flange nutM6                |
| 29  | 917212      | governor arm                        |
| 30  | 917501      | spring pin                          |
| 31  | 917213      | flat washer $\Phi$ 8X $\Phi$ 13X0.5 |
| 32  | 917502      | governor spring                     |
| 33  | 917106      | crankcase                           |
| 34  | 917214      | oil drain bolt M10X16               |
| 35  | 917215      | flat washer                         |
| 36  | 917216      | governor gear shaft                 |
| 37  | 917218      | flat washer $\Phi$ 6X $\Phi$ 18X1.5 |
| 38  | 917004      | governor gear                       |
| 39  | 917219      | antifriction washer                 |
| 40  | 917005      | sleeve                              |
| 41  | 917220      | governor lever                      |
| 42  | B282007     | ring opening                        |
| 43  | 917221      | connecting rod Bolt M6X29           |
| 44  | 917101      | connecting rod cover                |
| 45  | 917222      | windshield                          |
| 46  | 917303      | oil seal $\Phi$ 17X $\Phi$ 30X6     |
| 47  | B700420     | ball bearing 6203                   |
| 48  | B701405     | woodruff key 5X5X3.5                |
| 49  | 917244      | crankshaft assy                     |
| 50  | B701001     | flat key 5X5X35.5                   |
| 51  | 917908      | crankcase gasket                    |
| 52  | 917224      | locating pin                        |
| 53  | B700451     | ball bearing 6303                   |

| No. | ID Zboží    | Název                         |
|-----|-------------|-------------------------------|
| 54  | 917102      | crankcase cover               |
| 55  | B131008     | hexagon bolt with flang M6X25 |
| 56  | B701650     | "O" ring $\Phi$ 18X2.3        |
| 57  | 917010      | dip stick cover               |
| 58  | 917225      | Camshaft                      |
| 59  | 917226      | valve lifter                  |
| 60  | 917227      | push rod                      |
| 61  | 917103      | connecting rod                |
| 62  | 917503      | piston pin clip               |
| 63  | 917228      | piston                        |
| 64  | 917229      | piston pin $\Phi$ 8X14        |
| 65  | 917230      | expender                      |
| 66  | 917231      | scraper ring                  |
| 67  | 917232      | piston ring sets1             |
| 68  | 917233      | piston ring sets2             |
| 69  | 917304      | cylinder head gasket          |
| 70  | 917234      | intake valve                  |
| 71  | 917235      | exhaust valve                 |
| 72  | 917236      | cylinder head assy            |
| 73  | B131009     | hexagon bolt with flang M8X55 |
| 74  | 917504      | valve spring                  |
| 75  | 917237      | valve spring retainer         |
| 76  | 917238      | rocker arm shaft              |
| 77  | B276003     | rocker arm clip               |
| 78  | 917104      | exhaust rocker arm            |
| 79  | 917105      | intake rocker arm             |
| 80  | 917900      | cylinder head cover gasket    |
| 81  | 917245      | cylinder head cover           |
| 82  | 917240      | crimp terminal                |
| 83  | 917305      | breather tube                 |
| 84  | 917703      | spark plug(NHSP E7RTC)        |
| 85  | 917306      | intake valve oil seal         |
| 86  | B173003     | stud bolt M6X90               |
| 87  | 917908      | carburetor gasket gasket      |
| 88  | 917007      | Intake pipe insulation        |
| 89  | 917902      | carburetor (RUIXING)          |
| 90  | 917910      | air cleaner base              |
| 91  | 917008      | air cleaner base              |
| 92  | B235001     | hexagon flange nutM6          |
| 93  | 917009      | cage                          |
| 94  | 917903      | air filter                    |
| 95  | 917011      | air filter cover              |
| 96  | 917909      | knob bolt                     |
| 97  | 917905      | fuel filter                   |
| 98  | 917906P288C | fuel tank cap                 |
| 99  | B173004     | stud bolt M8X38               |
| 100 | 917907      | muffler gasket                |
| 101 | B228003     | hexagon flange nut M8         |
| 102 | 917241      | muffler                       |
| 103 | 917246      | muffler guard                 |
| 104 | 917247      | spark plug socket wrench      |
| 105 | 917248      | spark plug socket             |