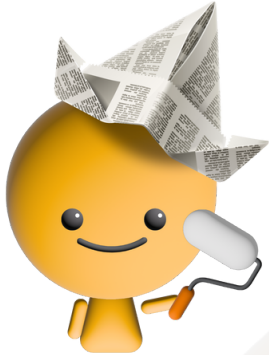


Dear customer, thank you for ordering a wallpaper in our e-shop. We make wallpapers with love, and our goal is to bring joy and a fresh breeze in the form of new decorations to your home.

We print wallpapers on smooth-textured non-woven fabric with a weight of up to 170 g/m². Thanks to modern UV-led inkjet printing technology, the wallpapers boast excellent surface resistance and color fastness. In addition, the printing technique saves the environment, the product is environmentally friendly and suitable for every room.



INSTRUCTIONS FOR STICKING WALLPAPER

We bring you instructions for applying non-woven wallpapers, which will be a great help for the application itself.

1. Before you start, make sure the place where you want to stick the wallpaper is firm, smooth, and dry. The better you prepare the base, the better the overall result will be. Feel free to use a primer as well.
2. Lay out the different parts of the wallpaper in the correct order. Ensure that the edges fit together correctly and the pattern is not broken when laying out the different parts of the wallpaper in the correct order. If you notice any defects, please do not hesitate to contact us.
3. Prepare the glue. With us, you will get the adhesive for the wallpaper for free. Mix the adhesive (100g) in the right proportion with cold water (2l) and let it stand. For the glue you will receive with the wallpaper, the valid ratio is 100g glue/2l.
4. Using a spirit level and a ruler, mark straight vertical lines every 75 cm on the selected wall to which you will attach the edges of the wallpaper. Feel free to leave an overlap of about 5 cm at the top and bottom. By overlap, we mean the excess material outside the main area to be wallpapered. You can trim this remaining excess later with a knife. If you have chosen a wall with a window to apply the wallpaper to, stick the wallpaper on from the window.
5. Apply the adhesive to the wall in the place designated for the first part of the wallpaper. Spread a thin, continuous layer slightly beyond the edge of the indicated lines. Do not apply glue to the wallpaper.
6. Take the first part of the wallpaper, and make sure you have the correct part in your hand. Carefully unfold the roll to avoid soiling the surface of the wallpaper. Place the top part of the wallpaper against the adhesive-covered wall and slowly press the whole piece down in a top-to-bottom direction. A wallpapering tool will make the job easier. Do not overlap the individual strips, place them side by side. Check that the first piece is aligned against the guide line. If it is not, gently slide it into the position.
7. Immediately wipe off the squeezed adhesive with a dampened sponge or sponge. Using a brush, smooth the surface of the wallpaper, removing unevenness and air bubbles. Use a circular motion from the center of the piece to the sides. Start at the top.
8. Using a ruler and knife, trim the overlapping edges of the glued wallpaper. Even a small detail will contribute to a perfect result. Repeat the same procedure for the other parts.